

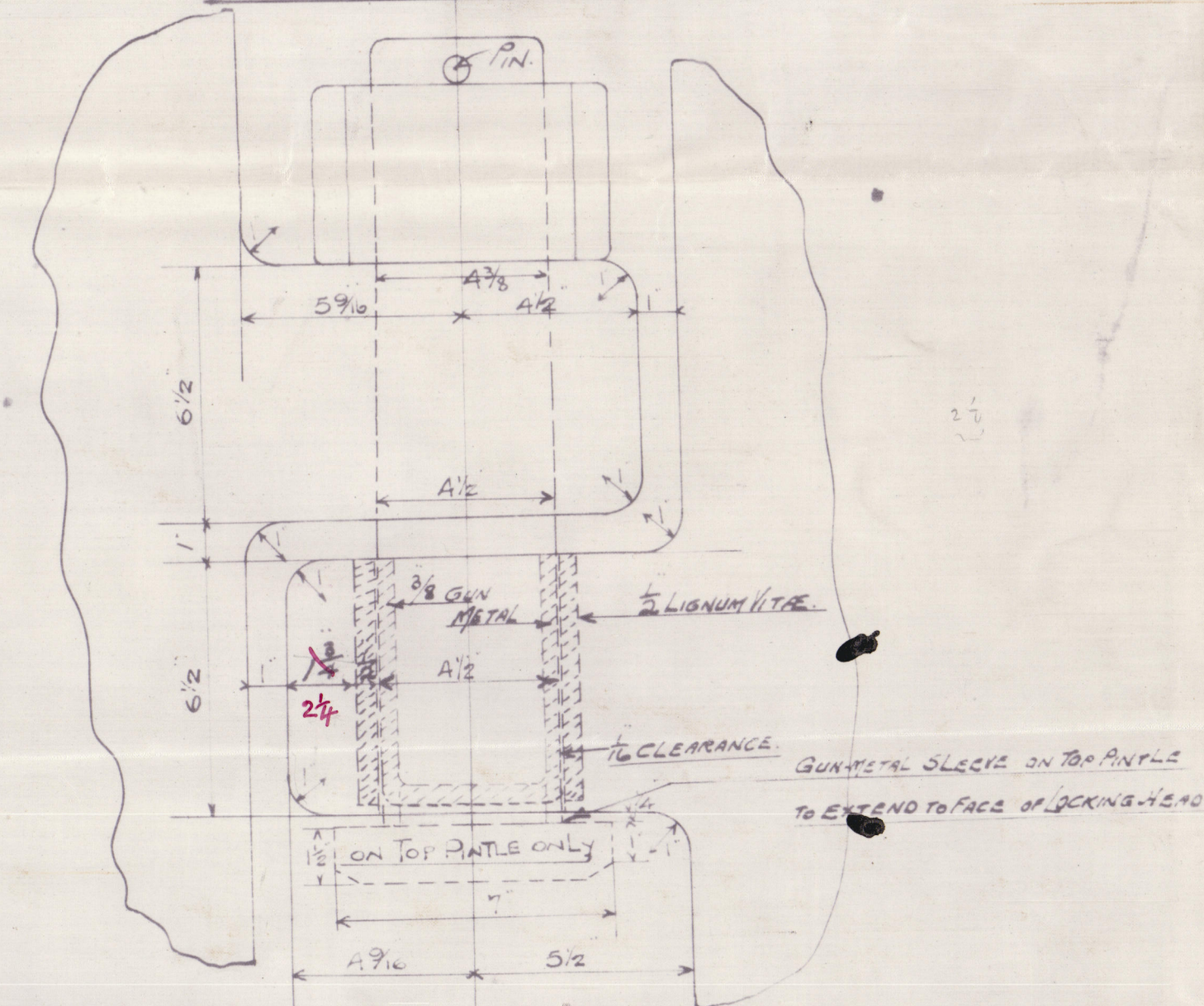
— CAST STEEL STERN & RUDDER FRAME —

SCALE 1/2" = 1 FOOT

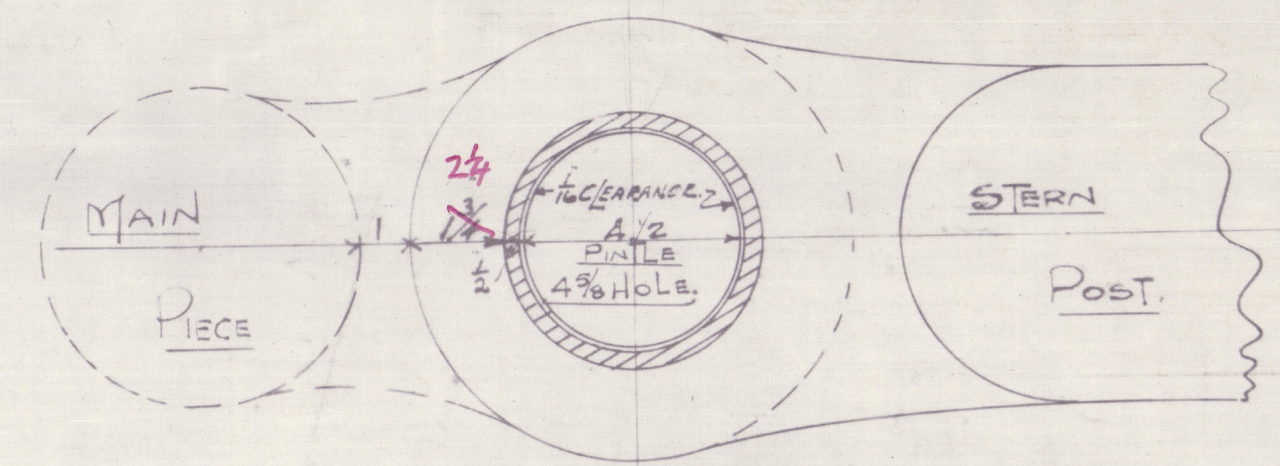
AREA OF RUDDER = 121.54 SQ. FT. CENTRE OF GRAVITY = 3.29
A x D = 399.96 UNDER TEN KNOTS SPEED = 9 RUDDER HEAD
FIGURED DIMENSIONS TO BE WORKED TO IN ALL CASES
TO PASS LLOYD'S TESTS

HEIGHT TO SHELTER DK AT SIDE	36-10 1/2
CAMBER ON OF FRAME	3 1/2
THICKNESS OF SHELTER DK	1/2
HEIGHT OF SHELTER DK AT CENTRE	37-2 1/2
CENTRE OF WHEEL ABOVE DECK	3-6
TOTAL HEIGHT ABOVE BASE	40-8 1/2
LESS 1 1/2" CLEAR	39-3 1/2
TOTAL HEIGHT TO CR OF WHEEL	39-0
RUDDER HEAD BELOW CR OF WHEEL	28-0 3/4
SPARE	13 1/4
ACTUAL LENGTH OF RUDDER	38-7

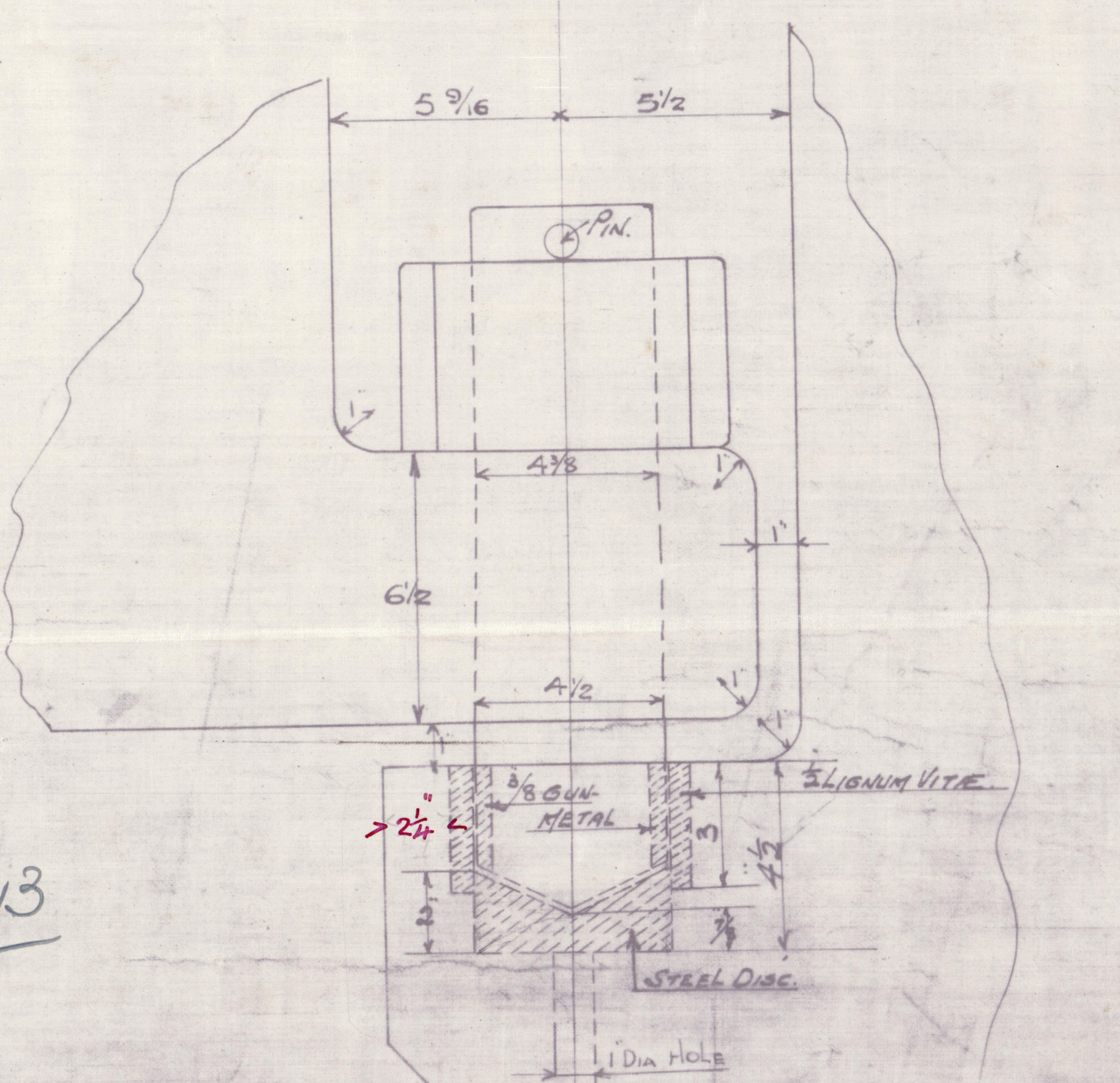
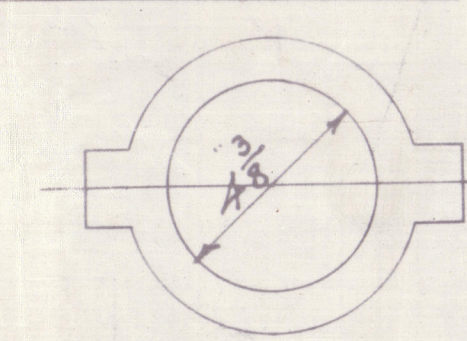
DETAILS OF PINTLES & GUDGEONS.



NOTE: CORRECT LENGTH OF TOP PINTLE TO BE MEASURED WHEN RUDDER IS COMPLETE & HEAD TO BE 1/4" CLEAR OF GUDGEON. BOTTOM PINTLE TO BE SHORT AS SHOWN TO ALLOW FOR STEEL DISC.



PLAN OF PINTLE NUT.



DETAILS OF PINTLES & GUDGEONS.

SCALE 3" = 1 FOOT

© 2019

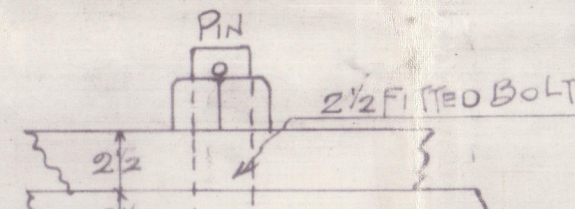
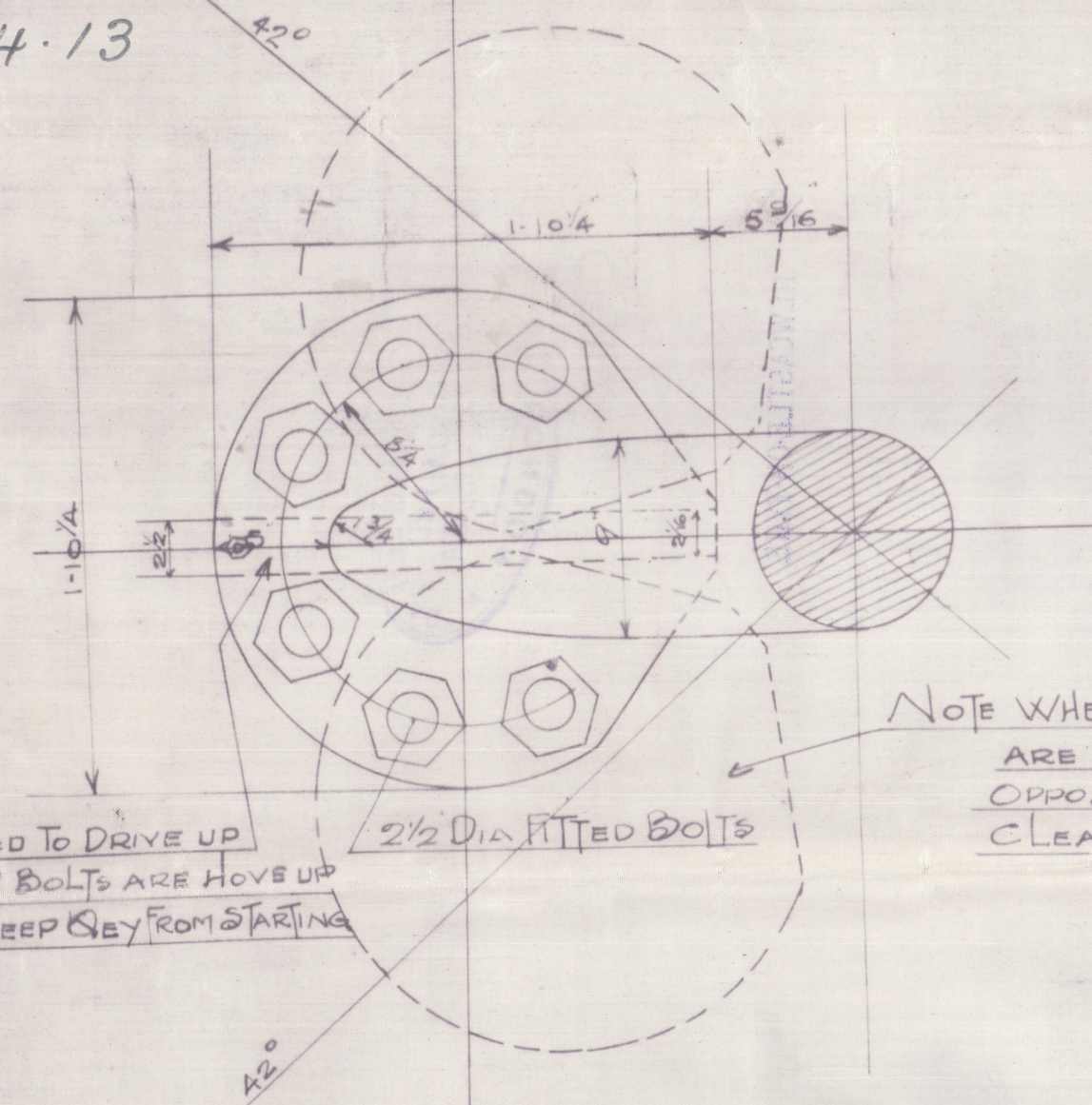
Lloyd's Register Foundation

W20-0066

DETAIL OF COUPLING

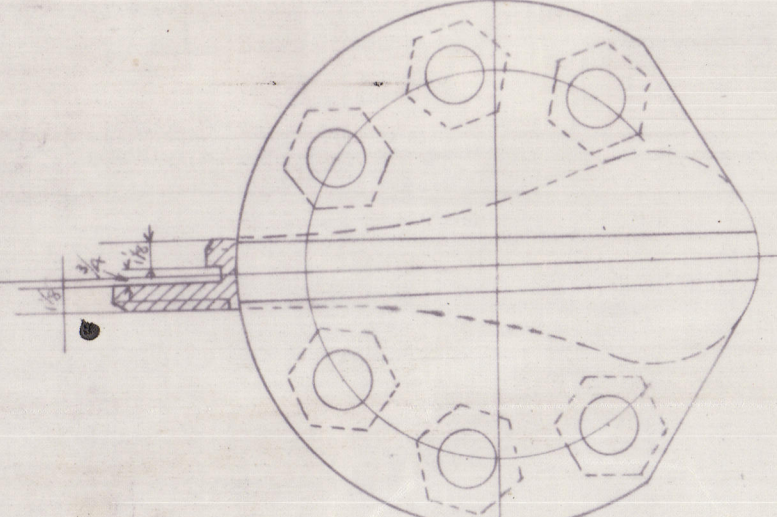
SCALE 1 1/2" = 1 FOOT

18.4.13

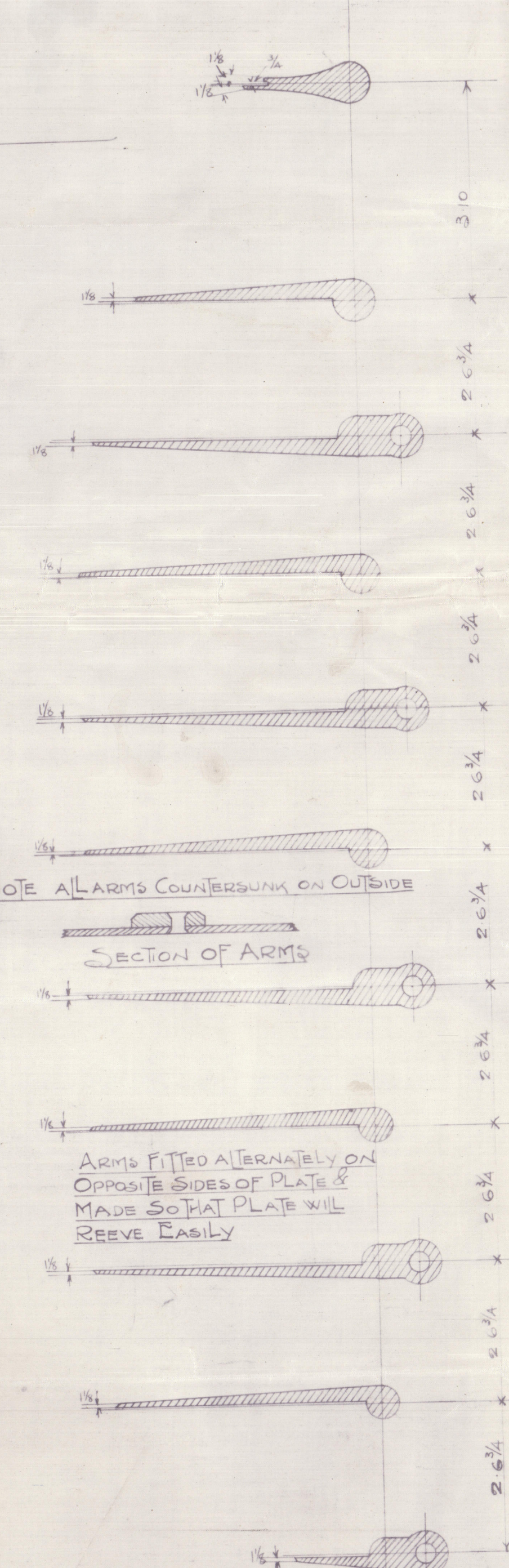


NOTE: THREAD OF COUPLING BOLT TO BE V-THREADED THUS WXXX NUTS FITTED WITH TAPERED PINS BOLT HEADS TO BE A TIGHT FIT WHEN SCREWED UP

NOTE: WHEN UPPER & LOWER HAVERS ARE PUT HARD OVER TO OPPOSITE SIDES, THEY MUST CLEAR AS SHOWN.

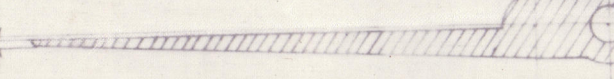


PLAN AT LOWER HALF OF COUPLING

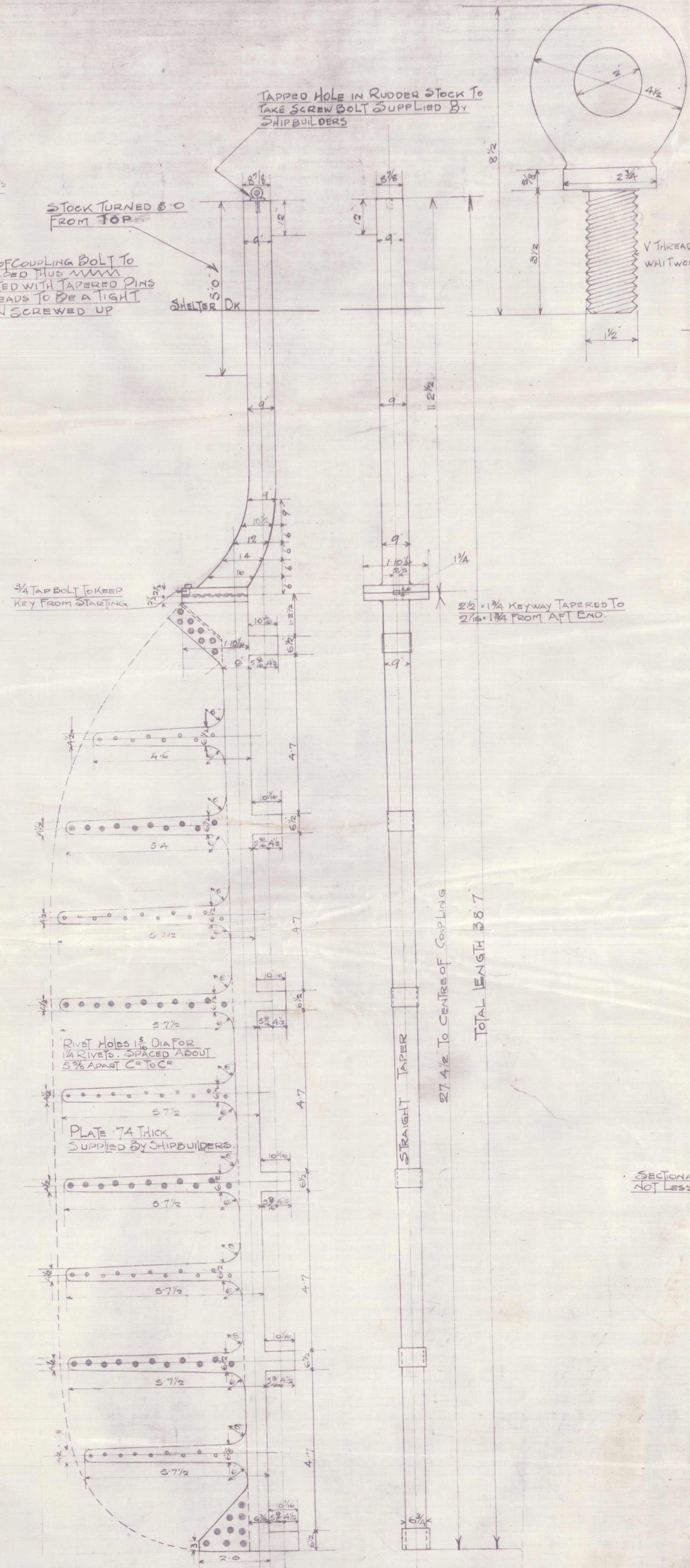


NOTE: ALL ARMS COUNTERSUNK ON OUTSIDE

SECTION OF ARMS



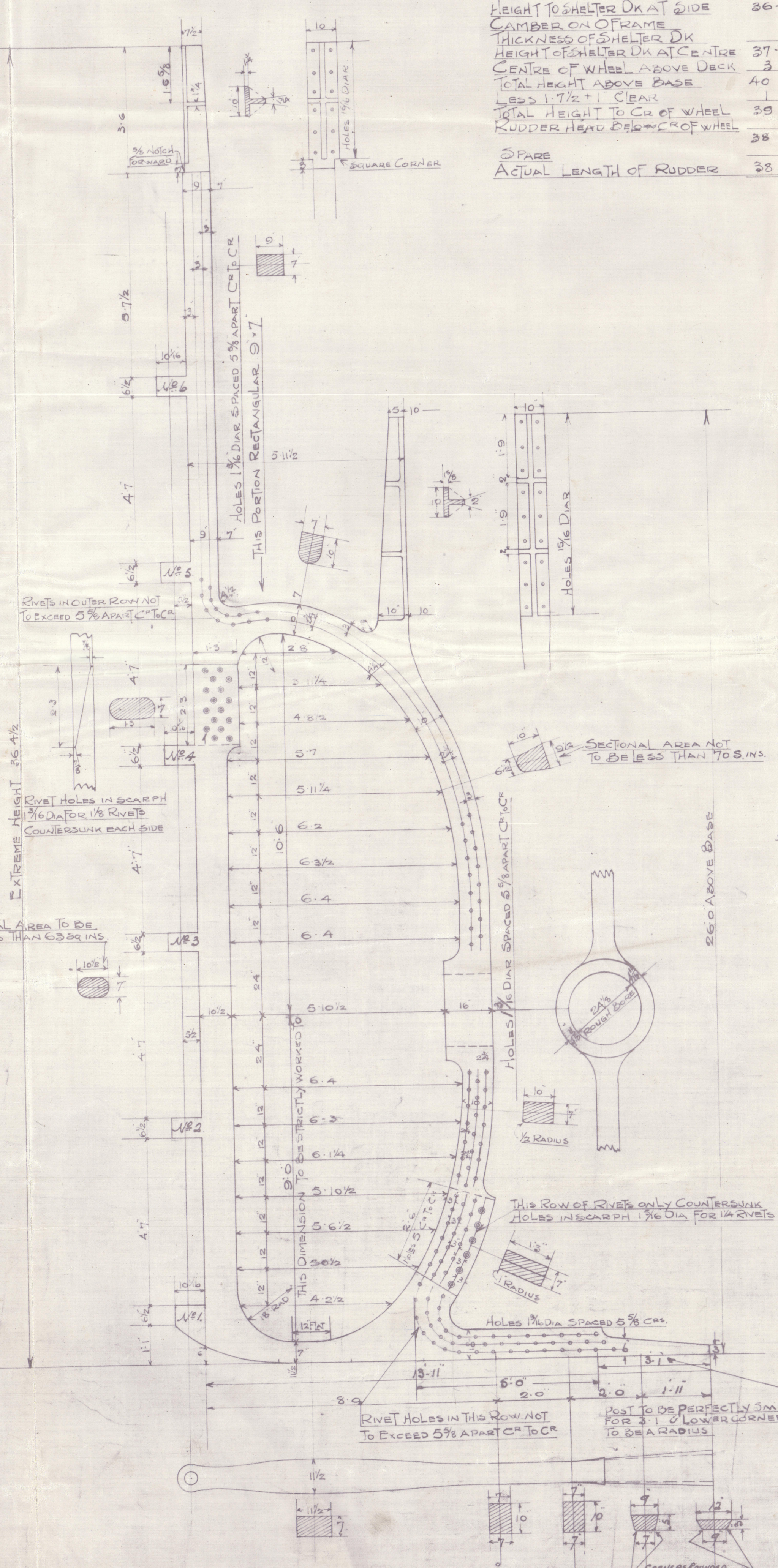
ARMS FITTED ALTERNATELY ON OPPOSITE SIDES OF PLATE & MADE SO THAT PLATE WILL REEVE EASILY



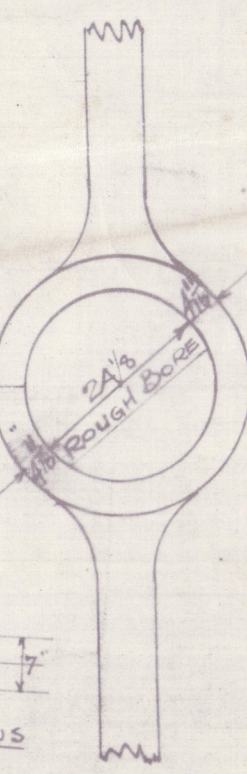
TOTAL LENGTH 38.7

27 1/2" TO CENTRE OF COUPLING

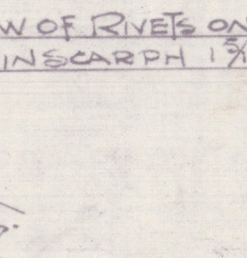
STRAIGHT TAPER



SECTIONAL AREA NOT TO BE LESS THAN 70 S. IN.



2 1/2" RADIUS



1/2" RADIUS

1/2" RADIUS

1/2" RADIUS

1/2" RADIUS

1/2" RADIUS

1/2" RADIUS

1/2" RADIUS

1/2" RADIUS

18.4.13

6 TNOATES

11/3/13



Antwerp Standard

No 216

Amended plan of Steam Service

Rudder

News.



Chelabros

S.S. "MAGDALA"

NEWCASTLE-ON-TYNE

Report No. 65937



© 2019

Lloyd's Register
Foundation

W20-0066