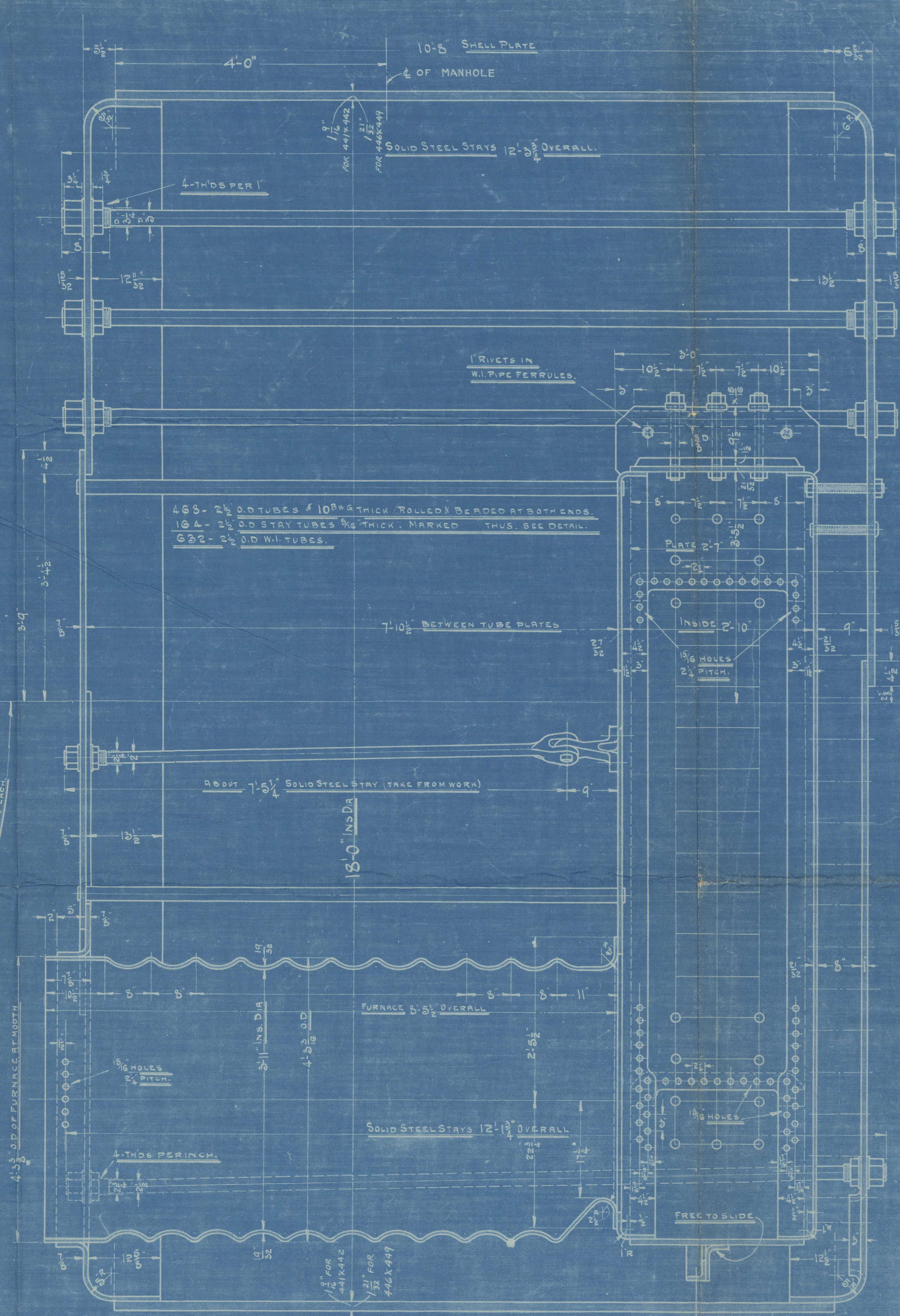


ONE BOILER AS DRAWN.
ONE BOILER TO OTHER HAND.

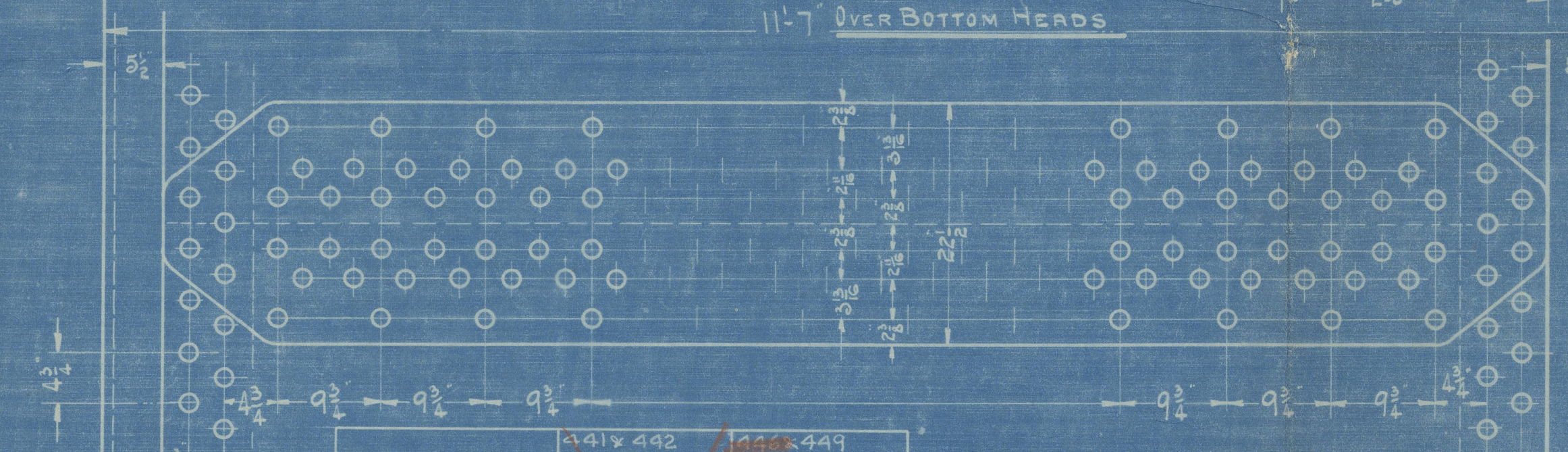
HEATING SURFACE, 652 TUBES, 2 1/2" DIA.	SQ. FT.	3257.4
4 FURNACES,.....	" "	236.1
4 COMBUS. CHAMBERS	" "	400.6
TOTAL 1 BOILER.	" "	3894.1
" 2 BOILERS	" "	7788.2

GRATE SURFACE, (5'-4" BARS) 90.0 SQ. FT. X 2 = 180 SQ. FT.
RATIO HEATING SURFACE TO GRATE = 43.2 TO 1.
AREA THROUGH TUBES 2251 SQ. IN. = 25.3 SQ. IN. PER SQ. FT. GRATE
WORKING PRESSURE, 150 LBS. PER SQ. IN.
TO BE MADE TO U.S. INSPECTION AND LLOYD'S.

EVAPORATION 270 LBS OF WATER PER SQ. FT. OF GRATE
DUPLIX SAFETY VALVE 4 1/2" DIA.



ALL SCREWED STAYS TO BE OF ~~W. L. FOR 449~~ AND TO HAVE 3/16" HOLE DRILLED IN EACH END TO A DEPTH OF 1/2" BEYOND INSIDE SURFACE OF PLATE.
ALL RIVETING IN THE COMBUSTION CHAMBERS TO BE FINISHED WITH COUNTERSUNK HEADS.



SHELL PLATES, 1 1/2" THICK	1 1/2" THICK
BUTT STRAPS, 1 1/2" THICK	1 1/2" THICK
RIVET HOLES, 1 1/2" DIA.	1 1/2" DIA.
PLATE PERCENTAGE, 85.9%	83.9%
RIVET, 1 1/2" DIA.	1 1/2" DIA.
ALL HOLES TO BE DRILLED,	

FOR 441K442 MINIMUM TENSILE STRENGTH OF SHELL PLATES 52700 LBS.
FOR 446K449 MINIMUM TENSILE STRENGTH OF SHELL PLATES 60000 LBS.

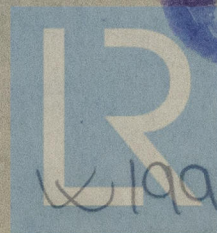
MATERIAL OF SCREW STAYS FOR 449 ALT. 3-3-17
7/32" THICK OF SHELL PLATES FOR 449 ALT. 3-3-17

SEE LLOYD'S REGISTER OF SHIPPING
MAR 9 1917
NEW YORK

MAIN BOILERS				
SCALE = 1" = 1'00"				
NUMBER WANTED FOR EACH BOAT	TO BE MADE	NAME OF SHIP	CONTRACT	DATE
2		STANDARD OCEANIC	11-449	5-9-1915
2		STANDARD OCEANIC	11-449	5-9-1915
2		STANDARD OCEANIC	11-449	5-9-1915
2		VACUUM STEAMER #2	11-449	1-24-1916

B-1-156
© 2021
Lloyd's Register Foundation

London



W199-0010

Lloyd's Register
Foundation