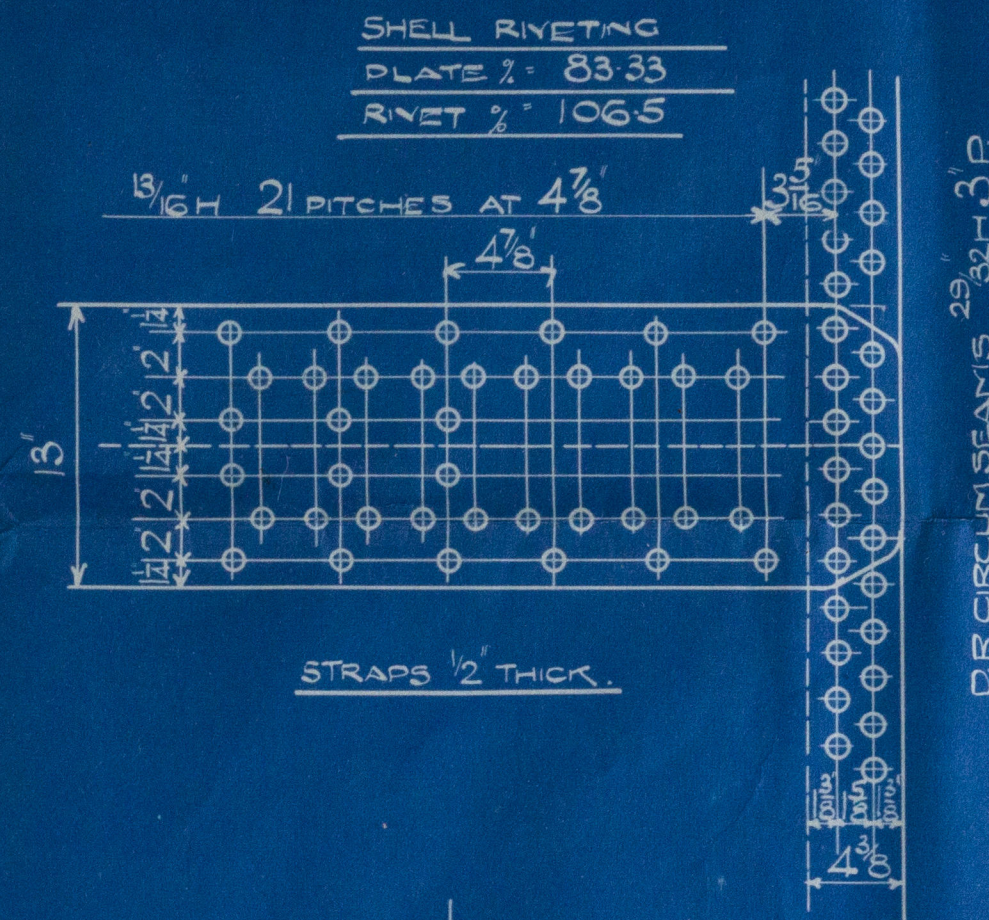
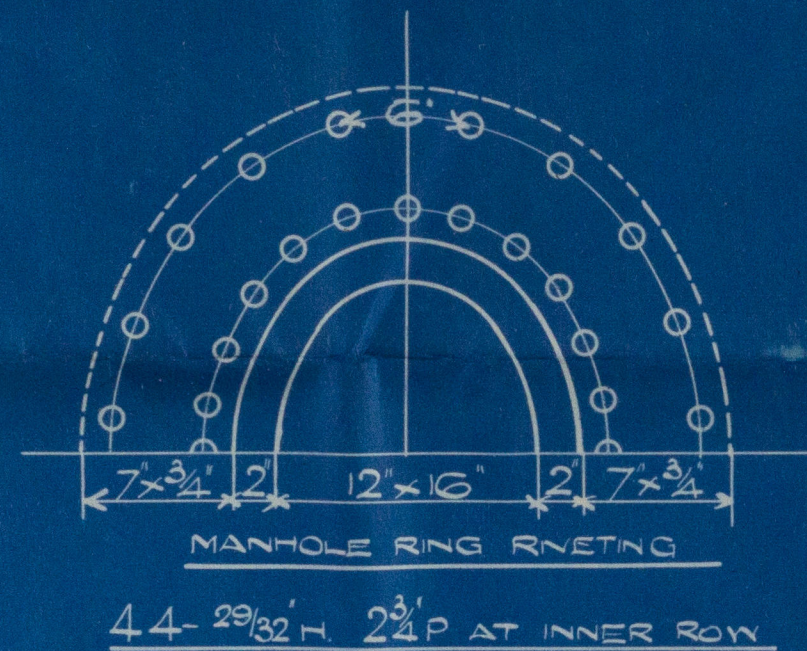


STEEL BOILER 10-0 DIA 9-6 LONG 120 LBS W.P. LLOYDS

6025

SPECIFICATION OF MATERIALS

SHELL & STRAPS	29-33 TONS
GIRDERS & MAINSTAYS	28-32 "
BALANCE OF PLATES, RIVETS & SCREWSTAYS	26-30 "



DR. CIRCUM. SEAM IS 29' 32" H. 3' P

PLATE 1/2" 69-73

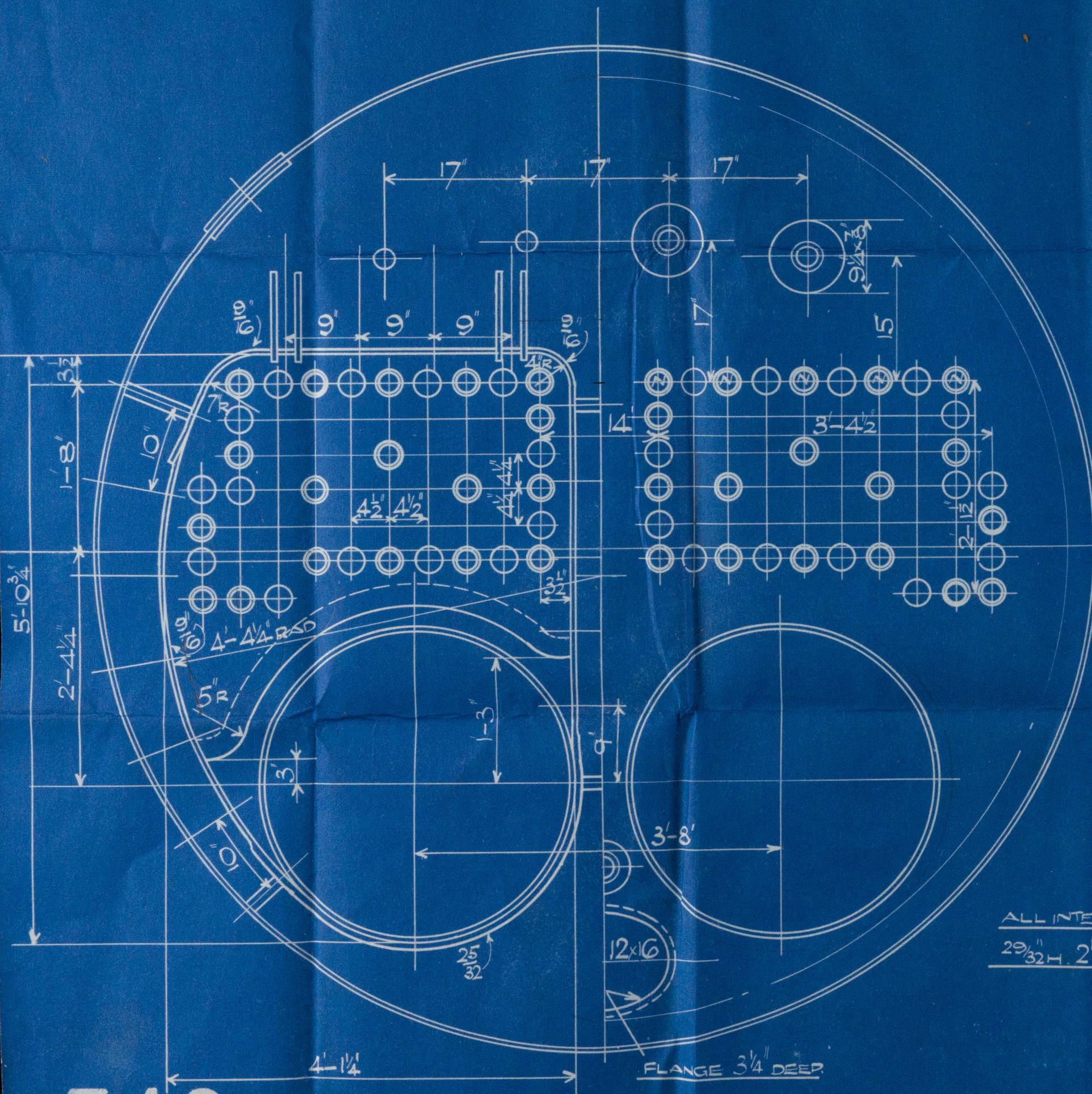
RIVET 1/2" 57-42

COMBUSTION CHAMBER SCREW STAYS

SCREWED 9 TPI. INTO BOTH PLATES. SINGLE

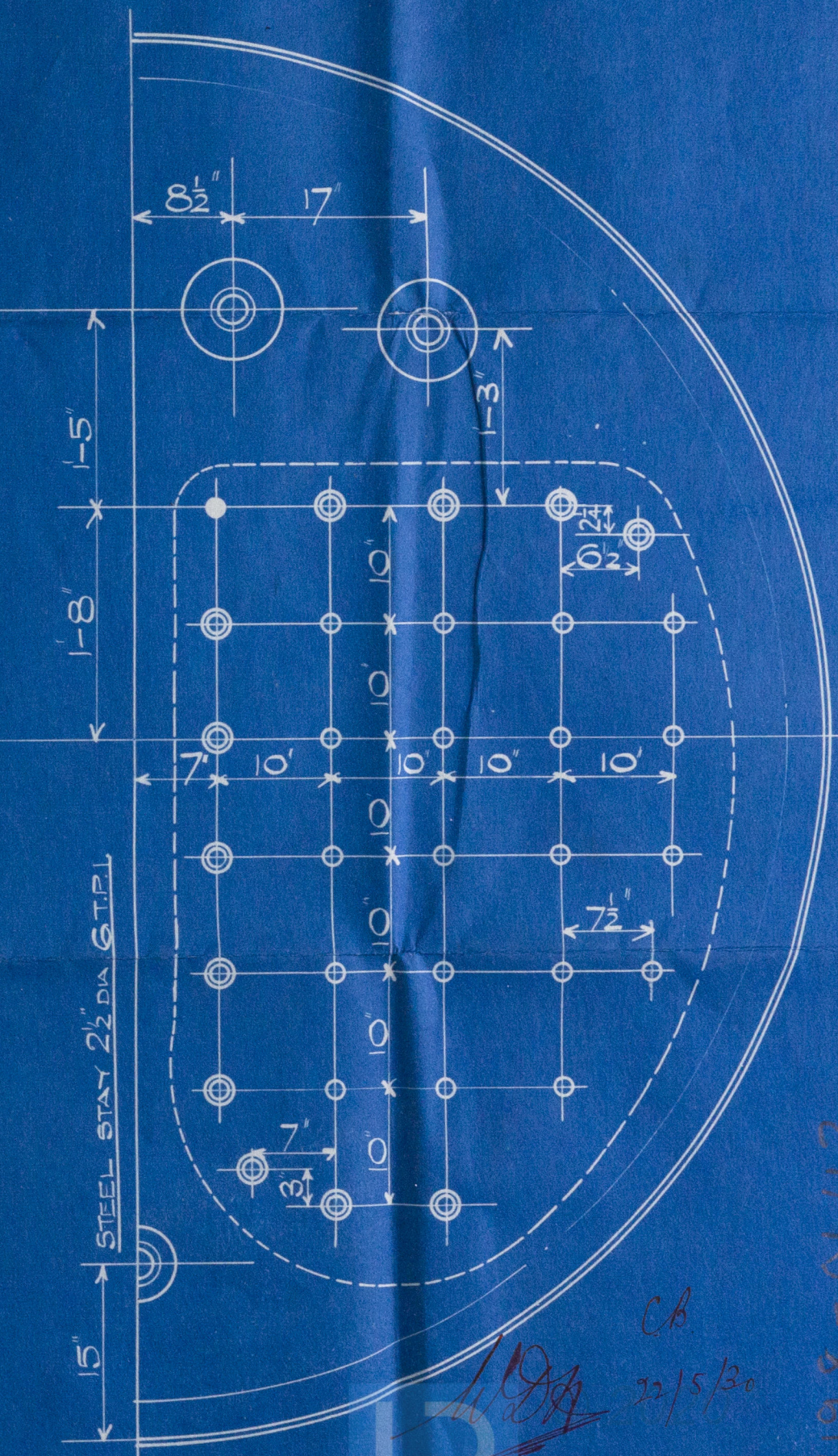
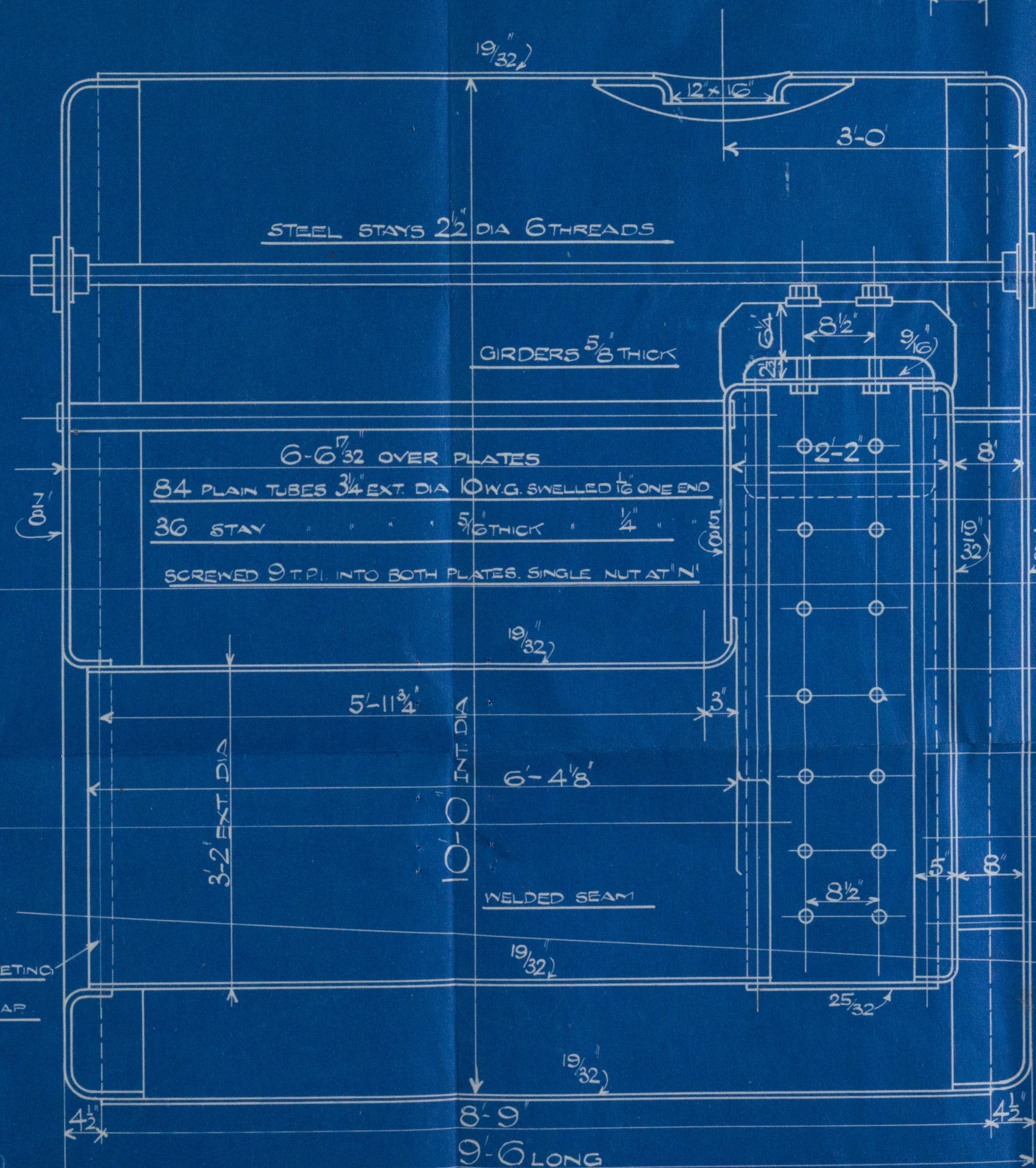
NUT AT EACH END OUTSIDE PLATES

AT BACK MARK	1 7/8" DIA.
" " "	1 3/4" DIA.
" " "	1 1/2" DIA.
7 SIDES	1 3/8" DIA.
7 GIRDERS	1 3/8" DIA.



ALL INTERNAL RIVETING

29/32" H. 2 1/8" P. 2 3/4" LAP



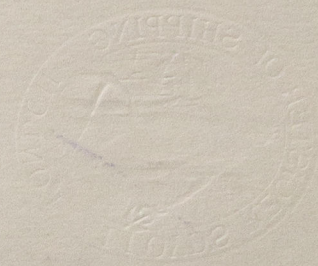
HEATING SURFACE. 830 sq ft

GRATE AREA. (5'-0" BAR) 30 1/2 sq ft

546A

HILEY BROS. (BOILERMAKERS) LTD.
STOCKTON-ON-TEES

W198-0142



RILEY BROS

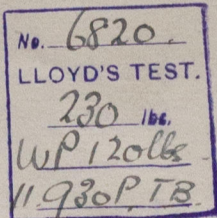
Nº 6025.

10' 0 x 9' 6 x 120lb.

to.
P. G. Embinicos Ltd

S/S. 'Maroussio Coulouthros'

B.Nº 6025.



Hub npt No 14214

W198-0142



© 2020

Lloyd's Register
Foundation