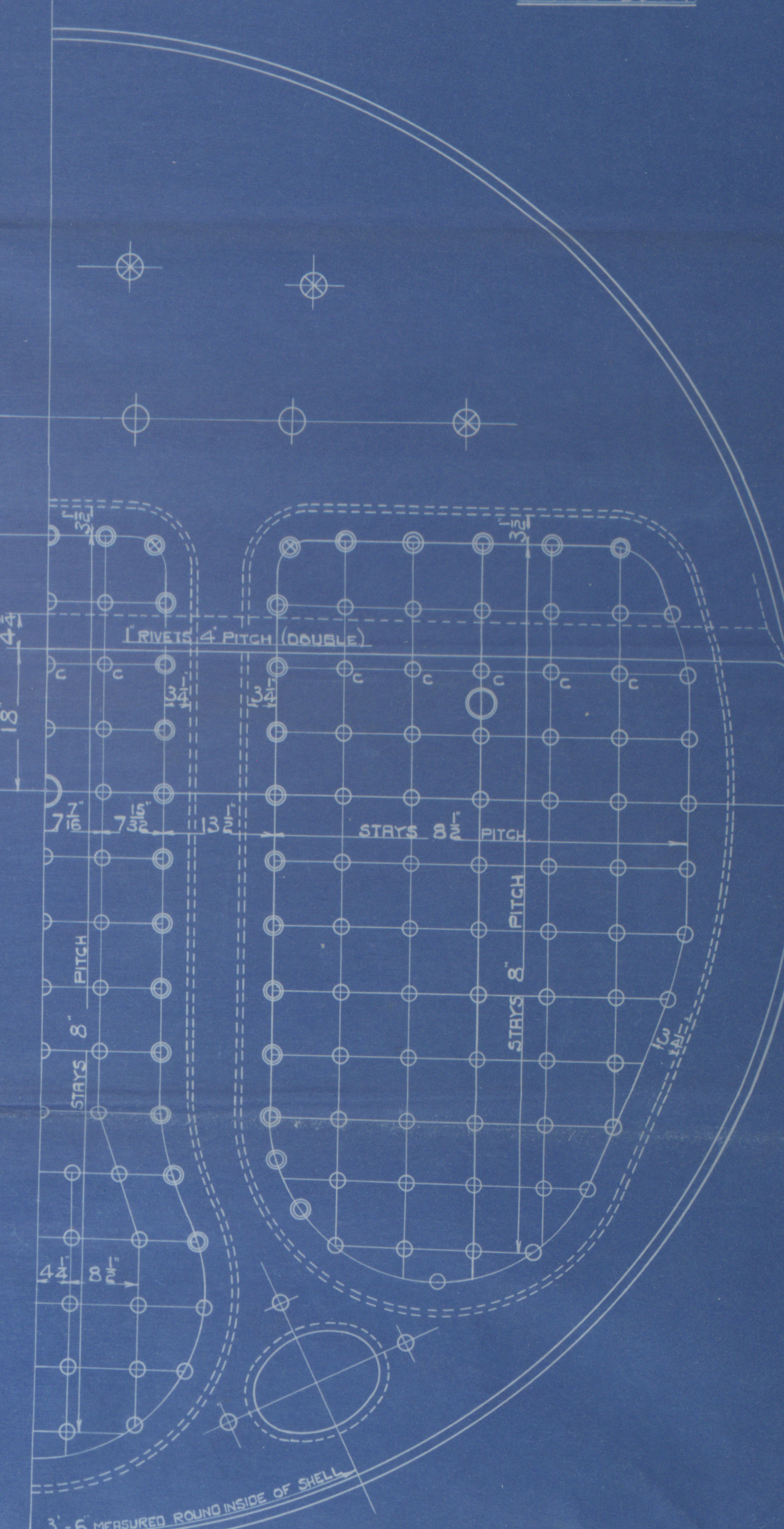
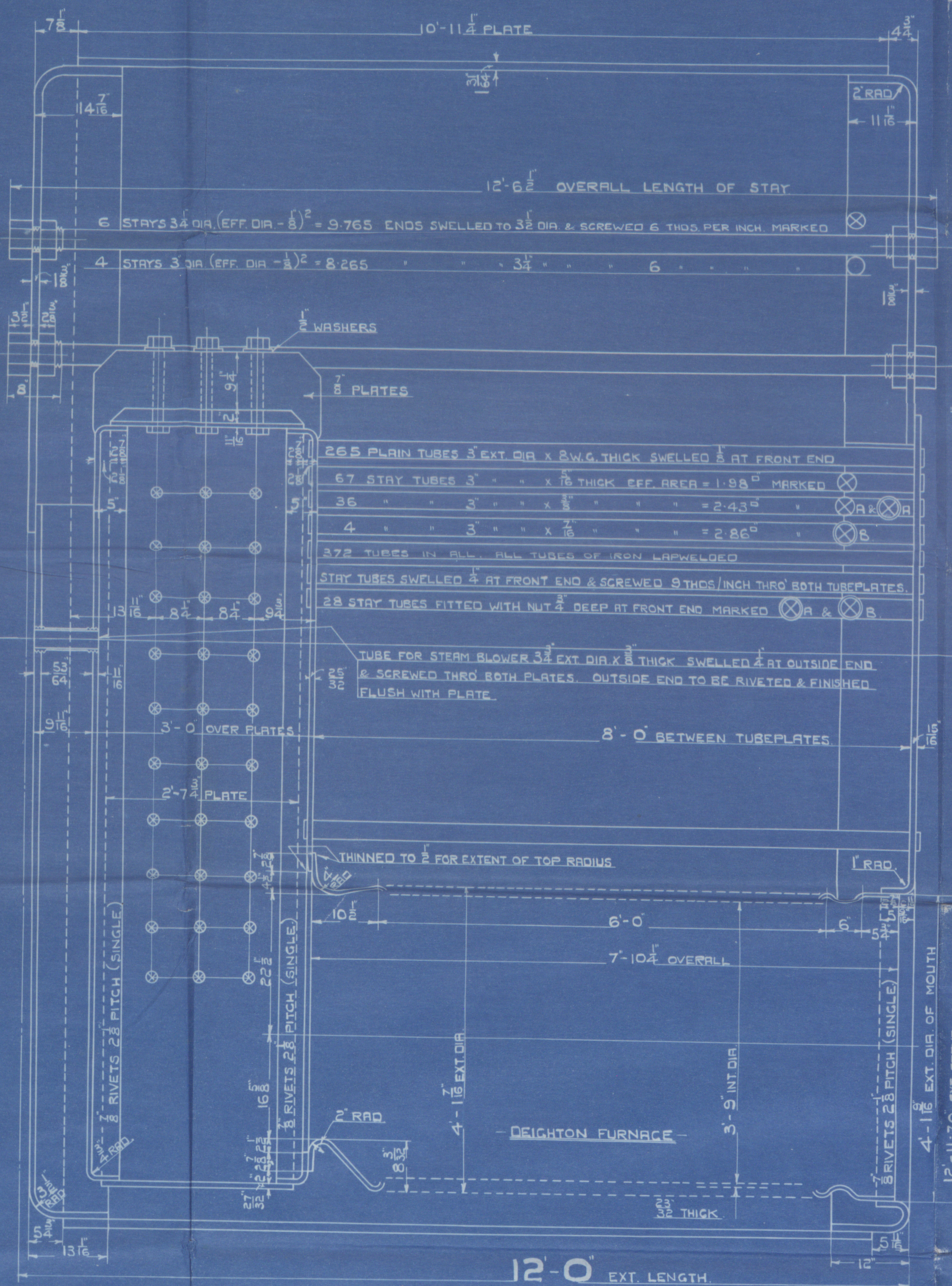
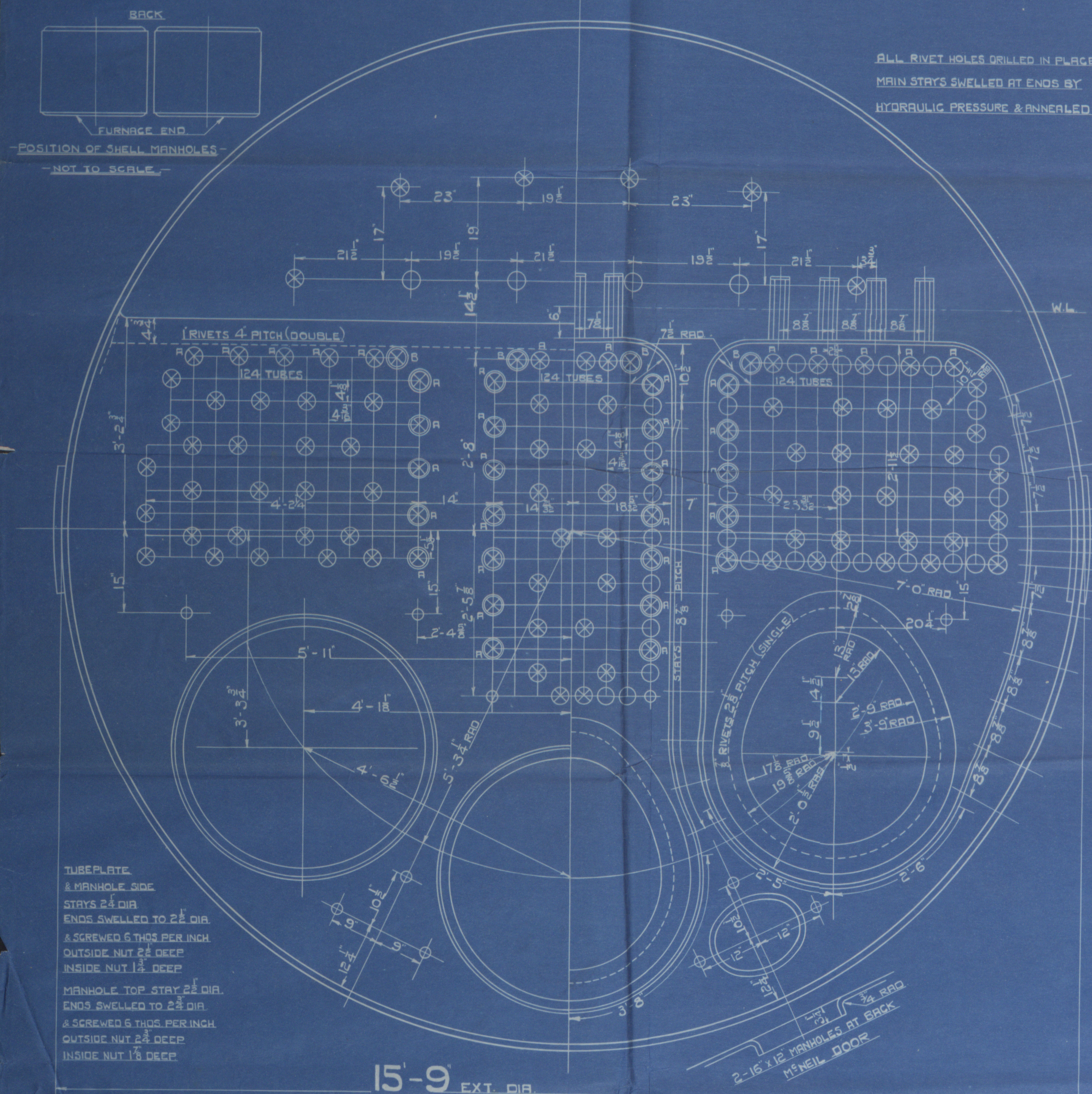
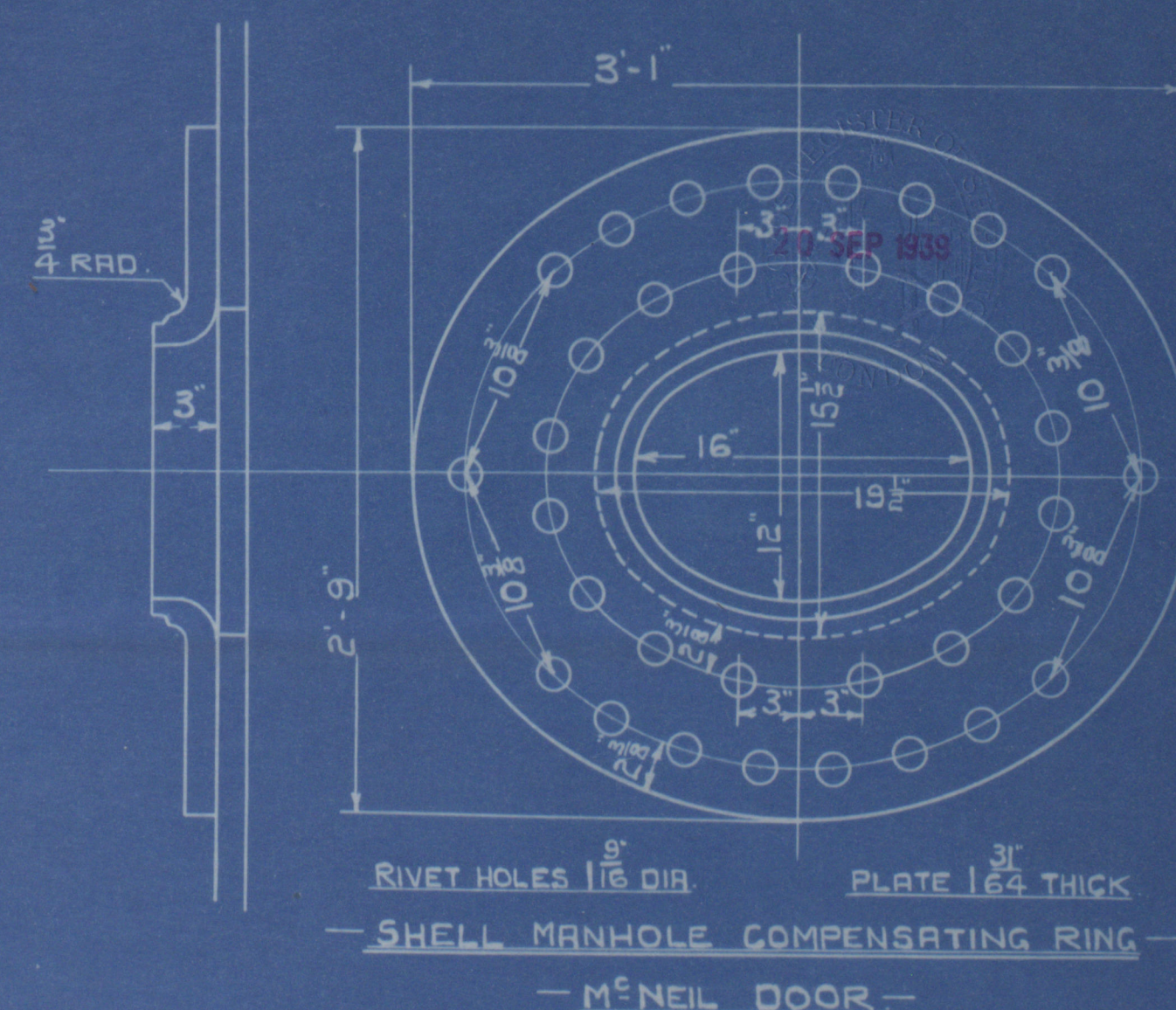
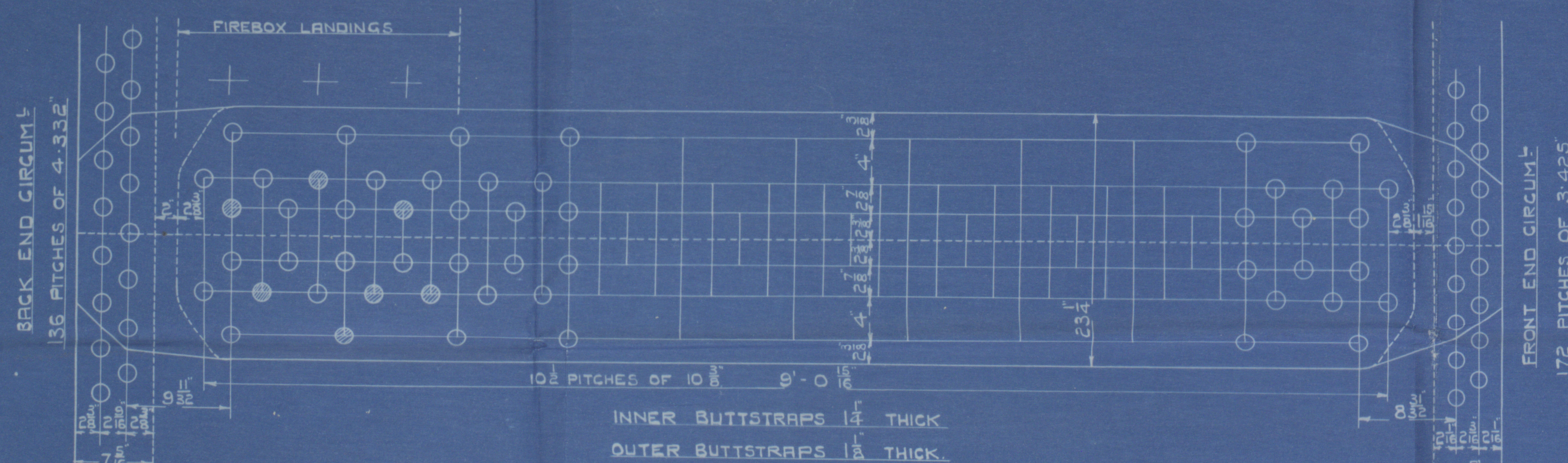


SURFACES (OIL BURNING)	ONE BOILER	TWO BOILERS
TUBES	2336	4672
FIREBOX TOP AND SIDES	156	312
BACK	87	174
TUBEPLATE	58	116
FURNACES	333	666
TOTAL HEATING SURFACE	2970	5940
GRATE AREA (OIL BURNING)		
TUBE AREA	13.5	27
WATER AREA	163	326
STEAM SPACE	488	976
% BOILER ABOVE FIREBOX	30.5	
WEIGHT OF WATER	288 TONS	57 TONS

- RIVETING -			
	LONG	BACK END CIRCUMF	FRONT END CIRCUMF
RIVET HOLE DIA	1 1/8	1 1/8	1 1/8
PITCH	10 3/8	4-33.2	3-42.5
% PLATE	84-94	63.9	60
% RIVET	88.7	45.7	45.2
% COMBINED	87.8		

- LIMITS OF TENSILE STRENGTH & MATERIAL -	
SHELL & BUTTSTRAPS	30 TO 34 TONS
GIRDERS	28 - 32
OTHER PLATES	26 - 30
FURNACES	26 - 30
MAIN STAYS	28 - 32
SCREWED STAYS	26 - 30
RIVET BARS	26 - 30



MAIN BOILER
 TWO OFF EACH CONTRACT NO.
CONT'S NOS 1040-1041-1056-1064
 WORKING PRESSURE 22.5 LBS PER SQ INCH
 TEST 38.8
 TO PASS LLOYD'S SURVEY
 SCALE: ONE INCH = ONE FOOT

POSITION	MARK	DIA	(DIA - 267) THDS/INCH
BACK	○	18	1-844
TOP & SIDES	○	12	2-189
BACK WIDE SPACE & TOP ROW	○	12	2-585
TOP CORNER	○	24	3-932

ALL FIREBOX STAYS SCREWED THRO BOTH PLATES AND NUT FITTED AT EACH END EXCEPT STAYS FROM WING FIREBOX TO SHELL AND STAYS MARKED 'C' IN BACK BOTTOM END WHICH PROJECT 3" AND ARE CAULKED. ALL 18 1/4" NUTS 1 1/2" DEEP EXCEPT ON GIRDER TOPS WHERE THE OUTSIDE NUTS ARE 1 1/2" DEEP. ALL 12 NUTS 1 1/2" DEEP - ALL 24 NUTS 1 1/2" DEEP.

D. ROWAN & CO.
MAIN BOILER N° 1064

O.T. 42573
 TRACED 15TH AUGUST 1939



①

D. Rowan shoff

1064

Main Boilers

"Michael E"

GLASGOW REPORT No 63856

Grh. 21415.

VX1195-0210



© 2019

Lloyd's Register
Foundation