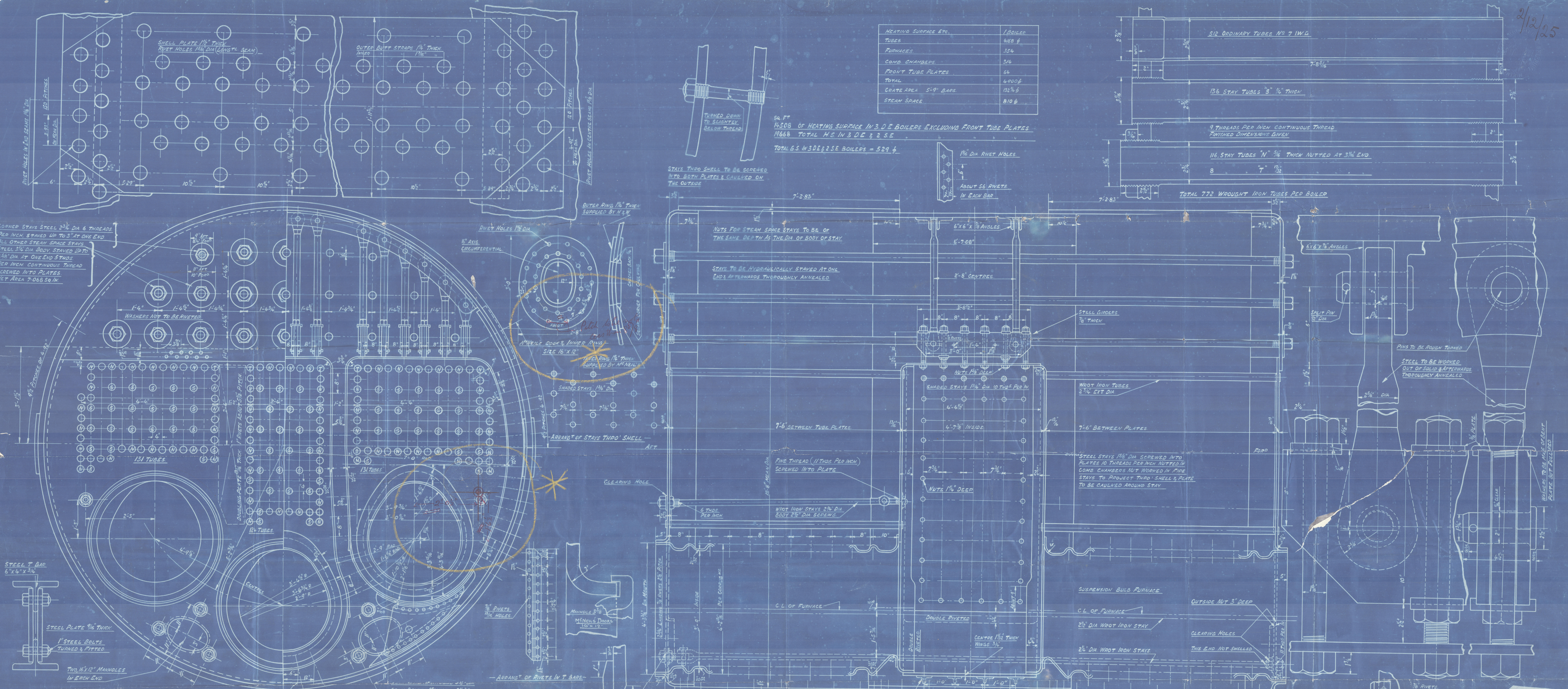
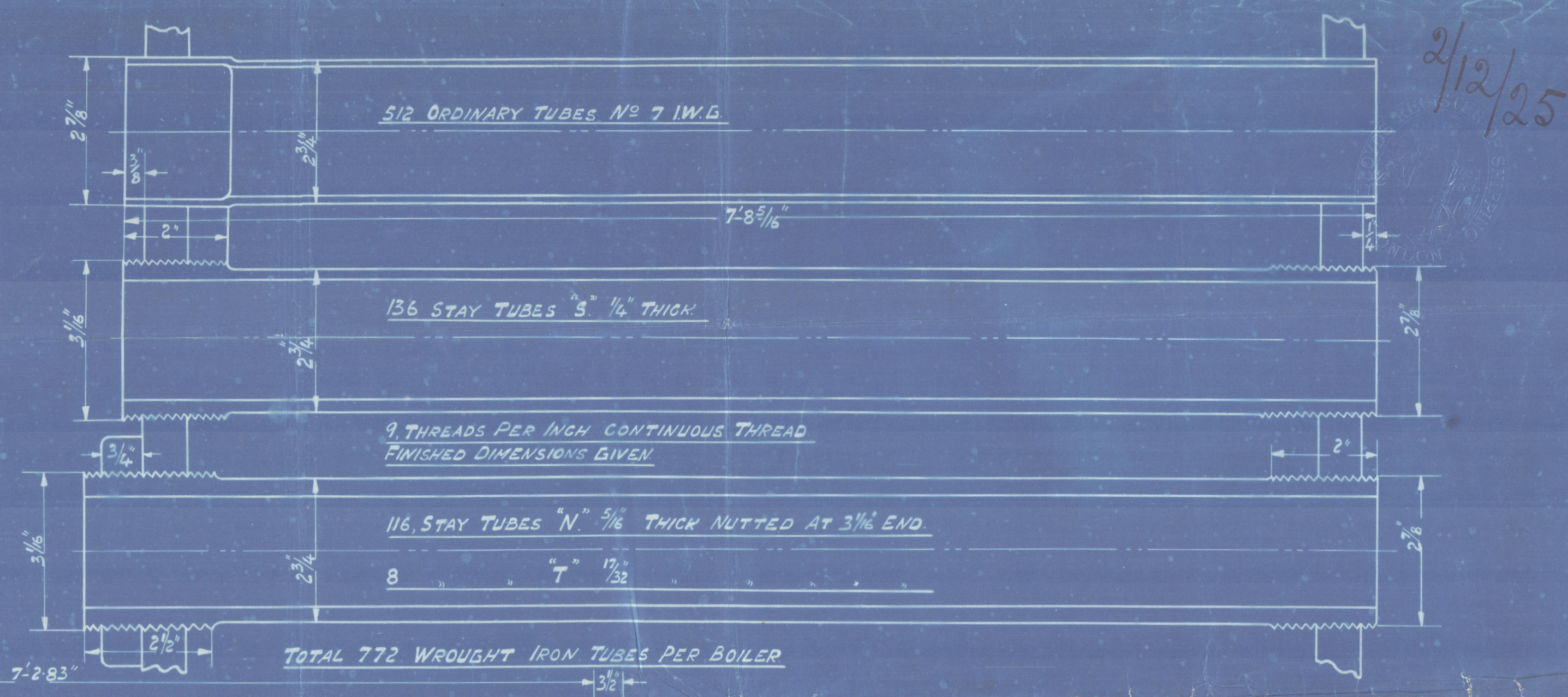


2/12/25



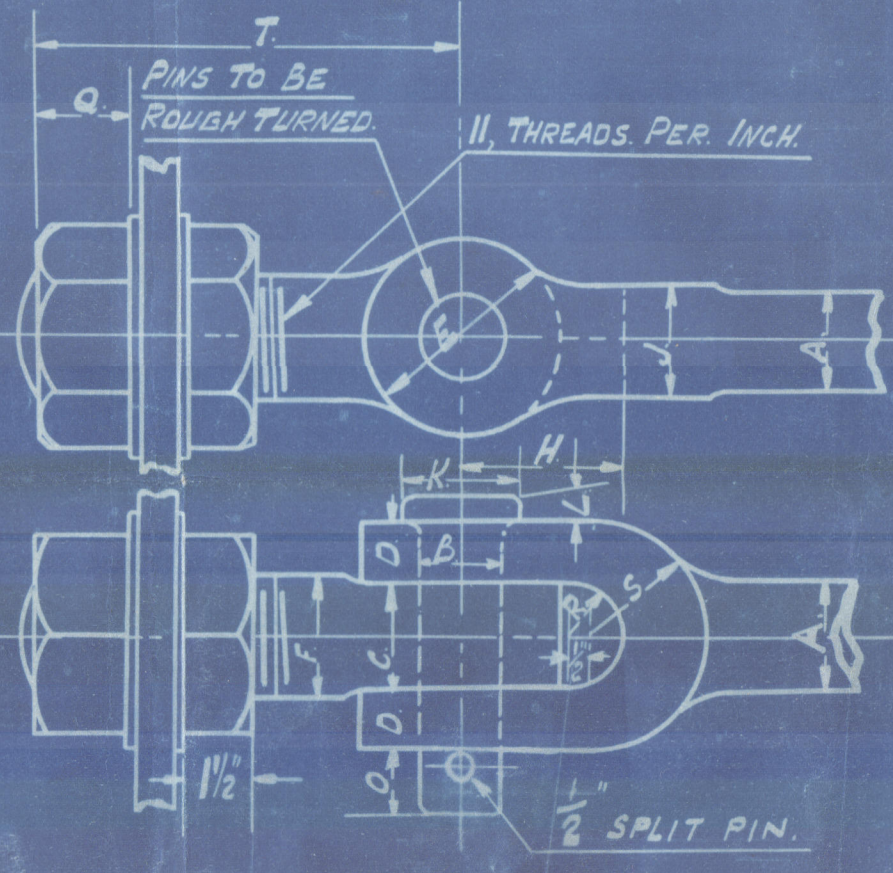
HEATING SURFACE ETC.	1/BOILER
TUBES	468 #
FURNACES	354
COMB. CHAMBERS	214
FRONT TUBE PLATES	66
TOTAL	4900 #
GRATE AREA	5-9' BARS
STEAM SPACE	810 #

Sq. FT.  
14508 OF HEATING SURFACE IN 3 D.E. BOILERS EXCLUDING FRONT TUBE PLATES  
19668 TOTAL H.S. IN 3 D.E. & 2 S.E.  
TOTAL G.S. IN 3 D.E. & 2 S.E. BOILERS = 529 #



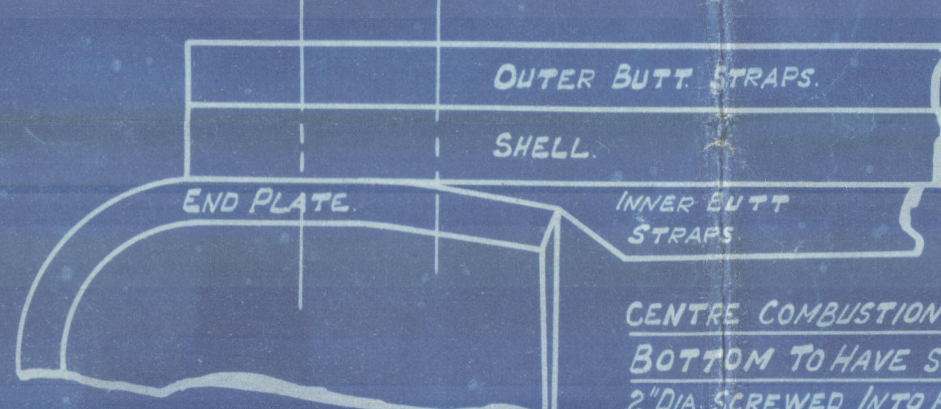
**PARTICULARS OF RIVETING**

SHELL PLATES	LONGITUDINAL SEAMS DOUBLE BUTT STRAPS, RIVETED AS SHEWN
	STRENGTH OF PLATE 84.52% STRENGTH OF RIVETS 98.5%
END PLATES	DOUBLE RIVETED 1/2\"/>
	DOUBLE RIVETED 1/2\"/>
FURNACES & COMB. CHAMBERS	DOUBLE RIVETED 1/2\"/>
	DOUBLE RIVETED 1/2\"/>
ALL PLATES & RIVETS STEEL ALL HOLES DRILLED IN PLACE	MINIMUM TENSILE STRENGTH OF SHELL PLATES 30 TONS PER SQ. INCH
	MINIMUM TENSILE STRENGTH OF RIVETS 30 TONS PER SQ. INCH
MINIMUM	BUTT STRAPS 26
	ENDS & COMB. CHAMBERS 26
MAXIMUM	ENDS & COMB. CHAMBERS 26
	RIVET BARS 26
TENSILE OF STEAM SPACE STAY BARS FROM 28 TONS TO 32 TONS	COMB. CHAMBERS STAY 26
	RIVET BARS 26

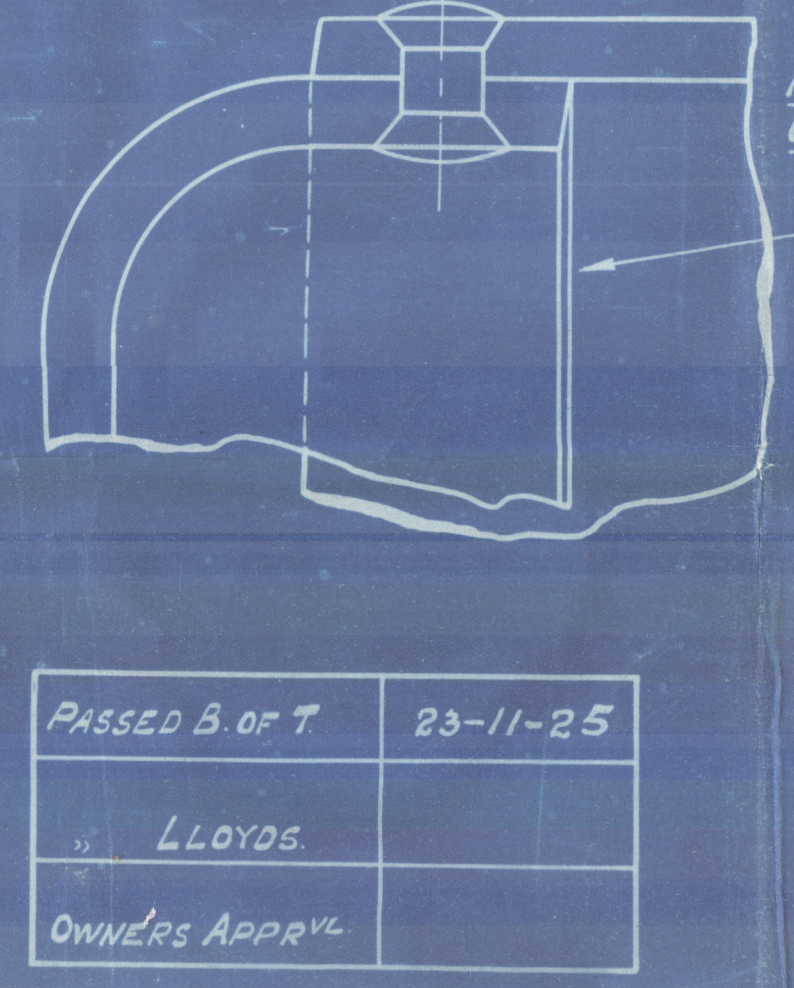


**NOTES RE-BOILER MATERIAL**  
LARGE WASHERS FOR STEAM SPACE STAYS ARE TO BE CUT OUT OF BOTTOM FRONT PLATES WHERE FURNACE HOLES ARE DORED

**3 BOILERS THUS** COST N° 52  
WORKING PRESSURE 220 LBS PER SQ. INCH  
TEST 380



CENTRE COMBUSTION CHAMBER  
BOTTOM TO HAVE SCREWED STAYS  
2\"/>



**NOTES**  
RIVETS IN FURNACES & COMB. CHAMBERS FINISHED AS SHEWN

WORKMAN CLARK & CO. LTD.  
ENGINE DEPT. BELFAST  
DRAWING N° 26858, DATE 27.10.25  
DRAWN BY J. J. J.  
CHECKED BY J. J. J.  
TRACING CHECKED BY J. J. J.

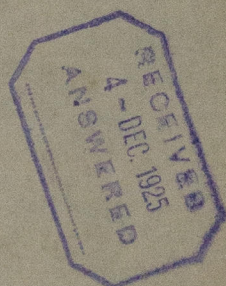
**N° 488.**  
**D. E. MAIN BOILERS.**  
SCALE: 1" = 1' 0"  
(EX MESSRS HARLAND & WOLFE)



WORKMAN CLARK & CO  
T.S.S No 488  
D.E. BOILERS.

3 OFF  
WORKING PRESSURE  
220 LB SQ.

DUP BRs. ———  
S.S. LLANDOVERY  
CASTLE.



Note

X193-0092



© 2021

Lloyd's Register  
Foundation