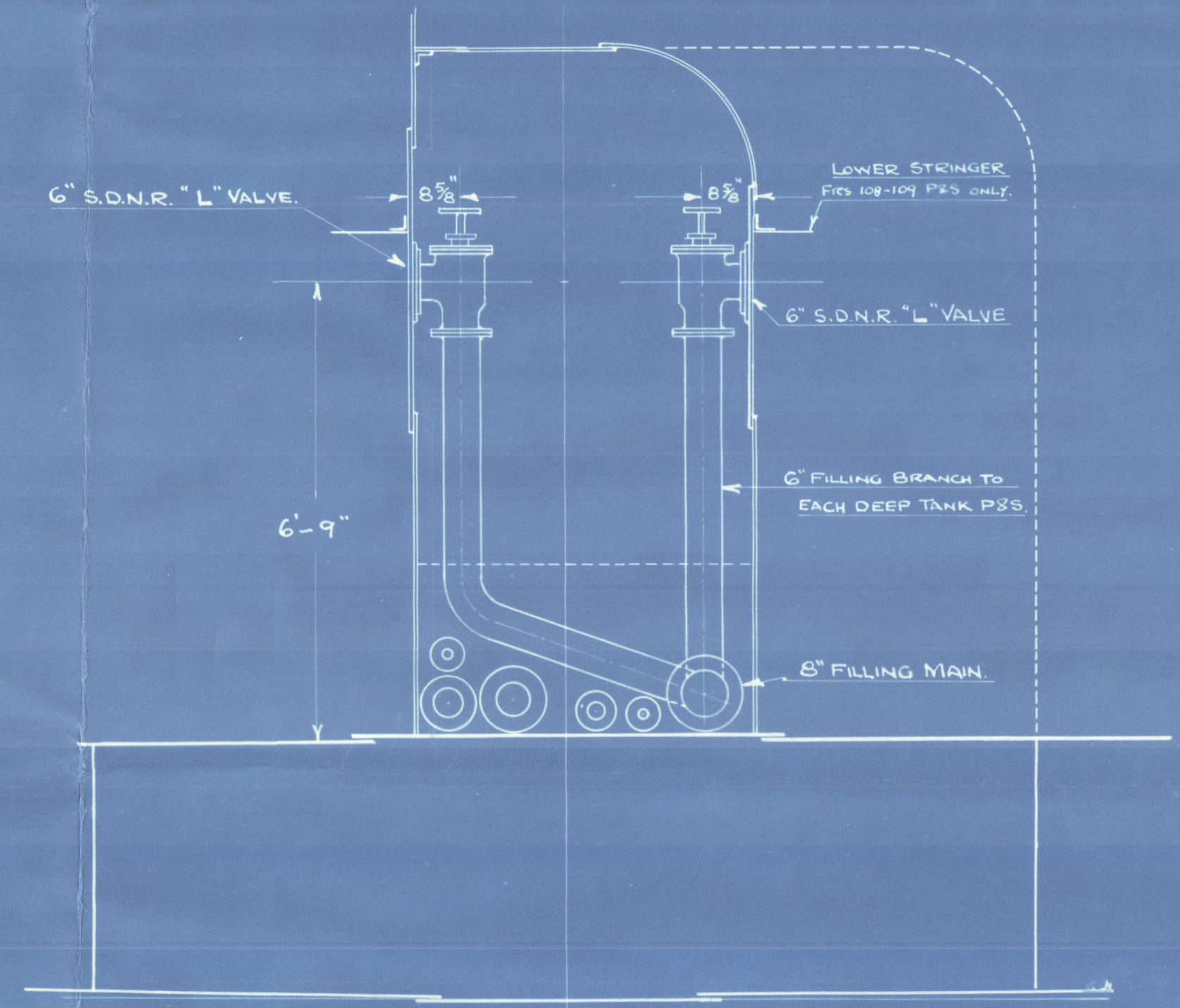


RECEIVED
12 FEB 1939
OFFICE

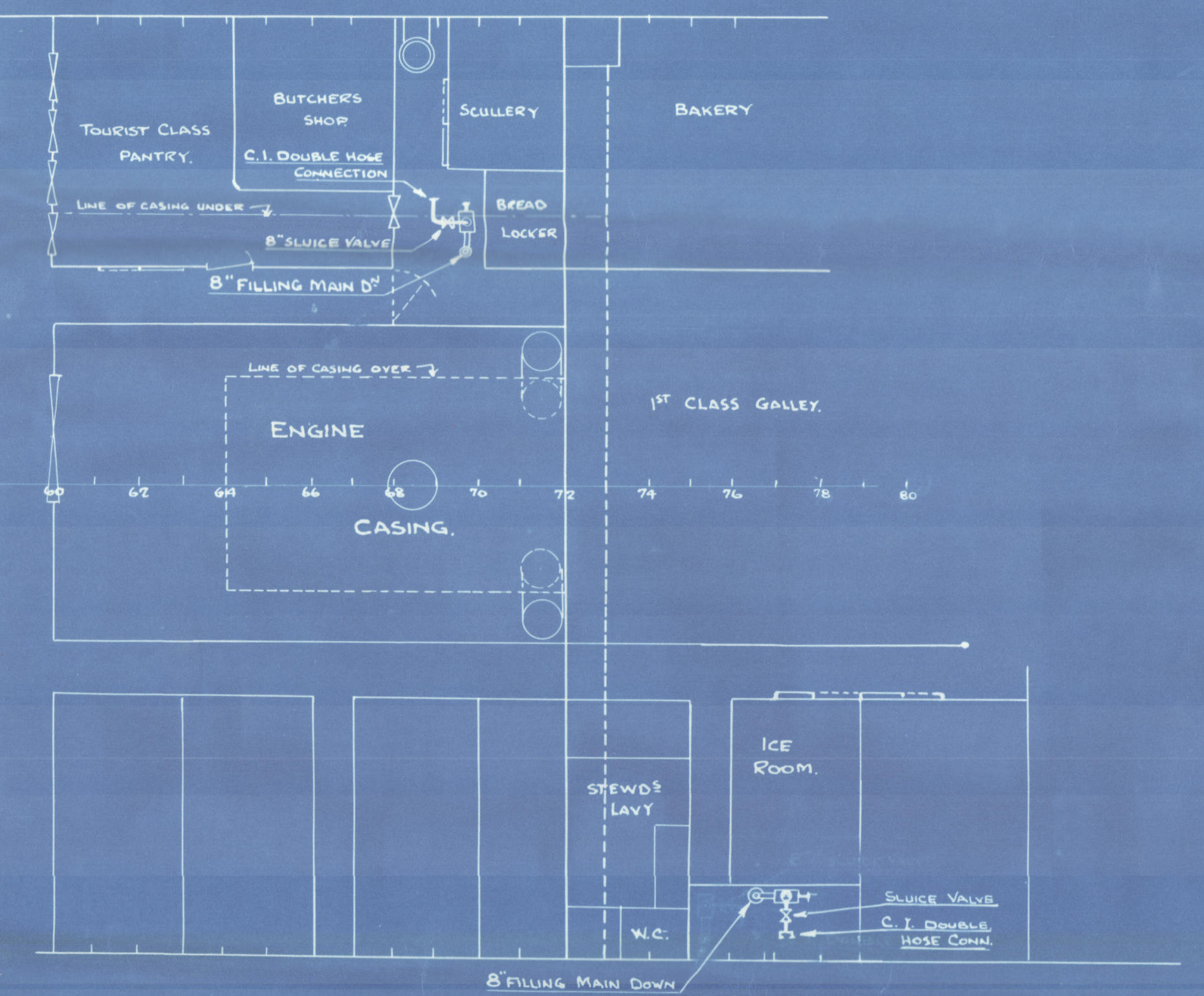
S.S. LLANDAFF CASTLE.
OIL FUEL FILLING, AIR & O'FLOW SYSTEM
SCALE:- $\frac{1}{8}'' = 1$ FOOT.

PRIME CODE N° 5026
AIR & O'FLOW SYSTEM SUB CODE N° 200
OIL FUEL FILLING " " " 201.

PLAN N° 3



SECTION THRO' FORD PIPE PASSAGE.
LOOKING FORD
SCALE:- $\frac{1}{8}'' = 1$ FOOT.



PLAN SHOWING OIL FILLING STATIONS AT UPPER DECK

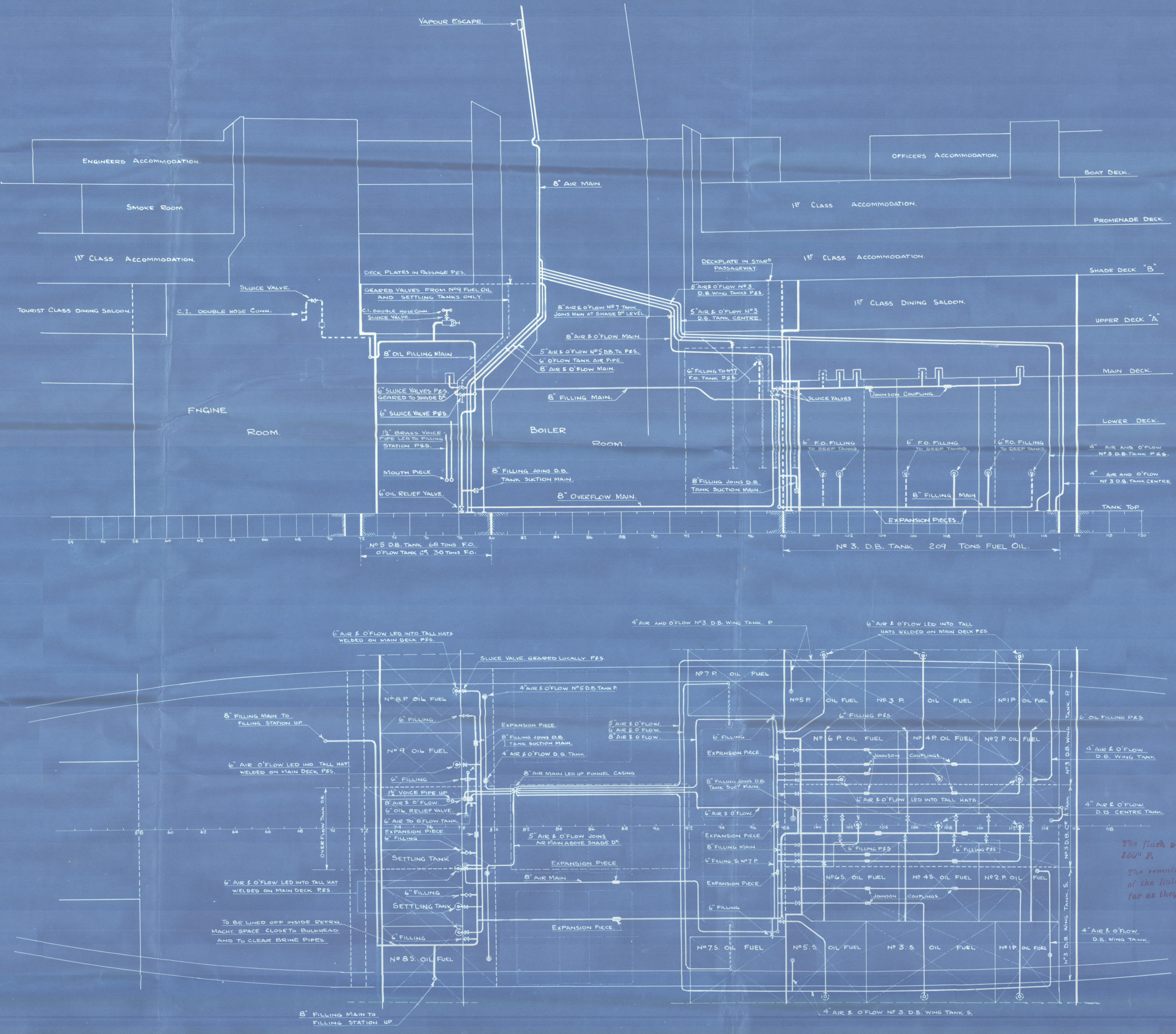
NOTES.

ALL PIPES TO BE BLACK LAPWELDED STEEL.
FILLING LINES TO BE TESTED TO 100 LBS WATER PRESSURE
AIR AND OVERFLOW PIPES TO BE TESTED TO 30 LBS WATER PRESSURE

VALVES TO BE GEARED AS INDICATED.
ALL JOINTS IN PIPELINES TO BE OF FLANGED TYPE AND TO HAVE JOINTING MATERIAL OF BELDAMS MULE TYPE
VOICE PIPES TO BE OF BRASS AND INSULATED
PIPES INSIDE MACHINERY SPACES TO BE LINED OFF BY SHIPYARD AND POSITIONS APPROVED BY ENGINE WORKS MANAGER BEFORE ANY WORK IS PUT IN HAND.

CARE MUST BE TAKEN THAT THE LEADS OF AIR AND OVERFLOW PIPE SYSTEMS WILL DRAIN INTO THE OVERFLOW TANK
AN ELECTRICAL FLOAT ALARM IS TO BE FITTED TO THE OVERFLOW TANK, TO RING IN EACH FILLING STATION AND BESIDE THE TRANSFER PUMPS WHEN THE TANK BECOMES $\frac{2}{3}$ FULL
VALVES ON FILLING BRANCHES TO BE LOCKED SHUT
VALVES ON AIR AND OVERFLOW PIPES TO BE LOCKED OPEN EXCEPT THAT ON 8" MAIN OVERFLOW 18" O" TO STARD. BULKHEAD 9B TO BE GEARED UP TO SHADE DECK WITH DECK PLATE AS INDICATED

THE TOP OF AIR PIPES INSIDE TALL HATS ARE TO TERMINATE 2" BELOW TOP OF SAME.
PROVISION TO BE ARRANGED FOR EXPANSION IN LINES AS SHOWN OR AS MAY BE REQUIRED AT SHIP
COMBINED FILLING AND SUCTION PIPE TO DOUBLE BOTTOM TANKS 5" DIA.
SUCTION PIPE TO OIL FUEL BUNKERS 5" DIA.
SUCTION PIPE TO OVERFLOW TANK 5" DIA AND LED TO TRANSFER PUMP
SUCTION PIPE TO EACH SETTLING TANK 4" DIA.



The flash point of the oil fuel to be about 160° F.
The remaining requirements of Section 90 of the Rules 1938-9 to be complied with as far as they are applicable.

422
1/2/39
JWS

W193-0089

HARLAND & WOLFF LTD.
BELFAST

No. "Llandaff Castle"

TITLE Oil fuel filling, air + overflow System

DATE APPROVED 2. 2. 39

"Llandaff Castle"
Belfast Rpt 12394

W193-0089



© 2021

Lloyd's Register
Foundation