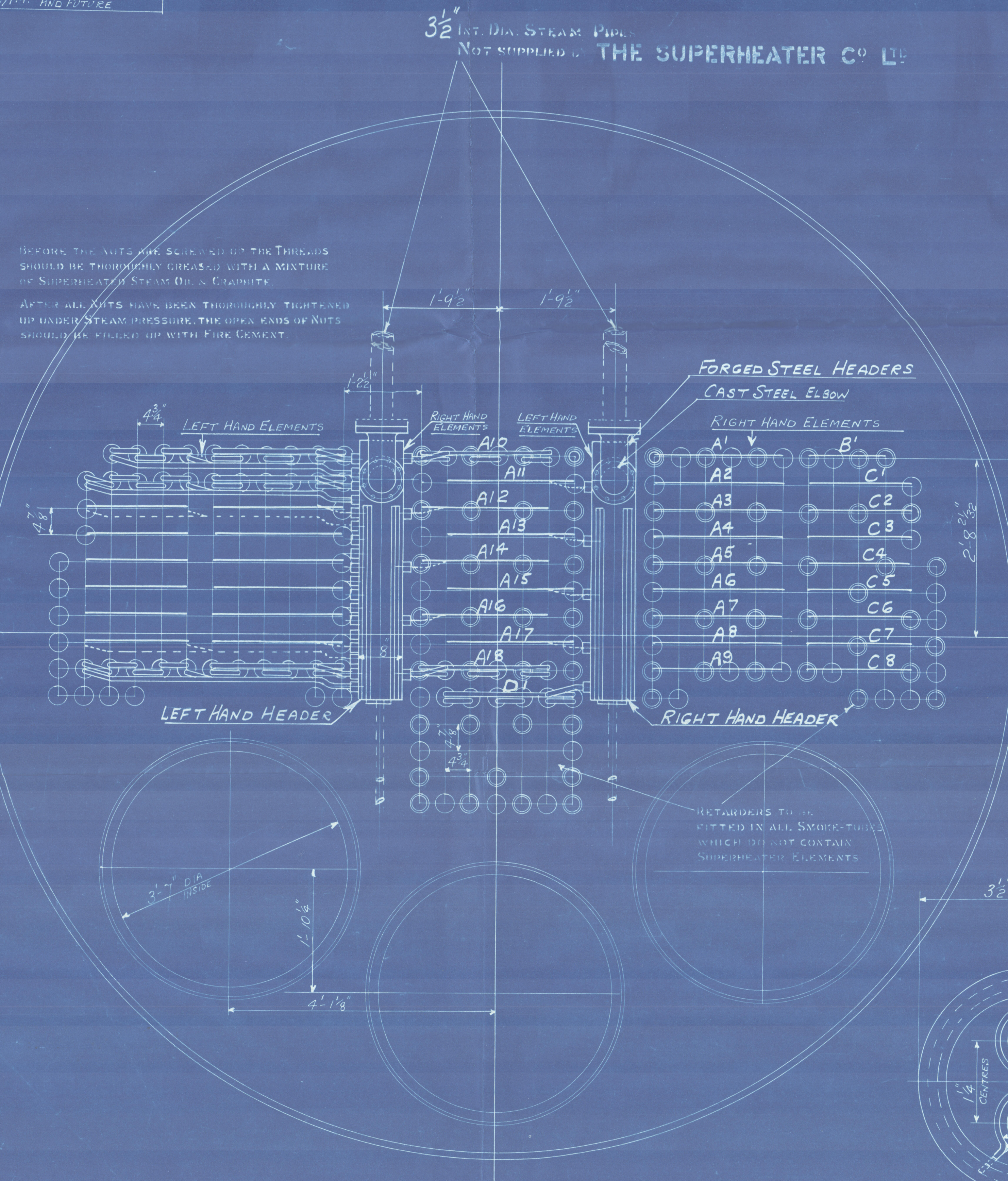
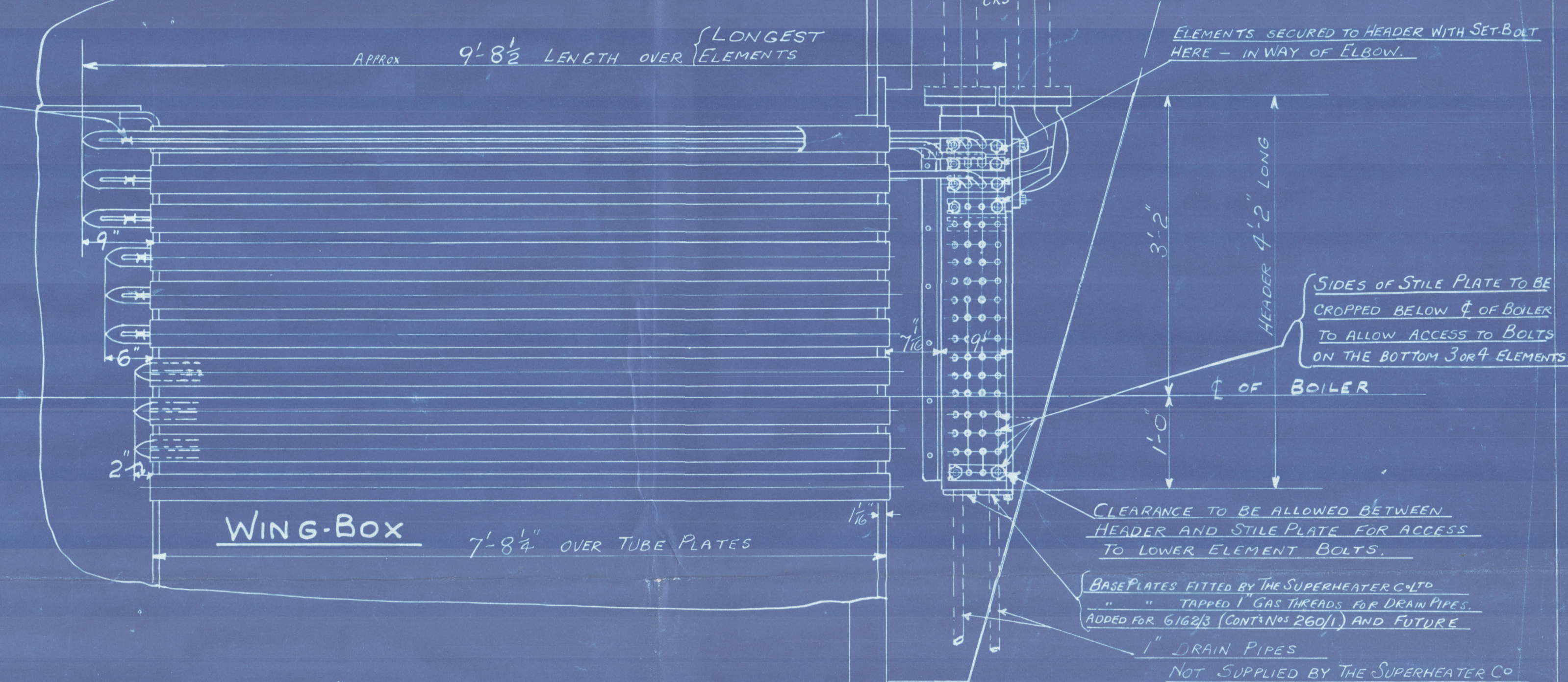


REVISION	REMARKS
(A)	ELEMENTS EXTENDED INTO COMBUSTION CHAMBER
(B)	BASE PLATES ADDED FOR 6162/3M, (NOTING 260/1)
(C)	HEADER & ELBOW FLANGES ALTERED FOR 6360/1M AND FUTURE

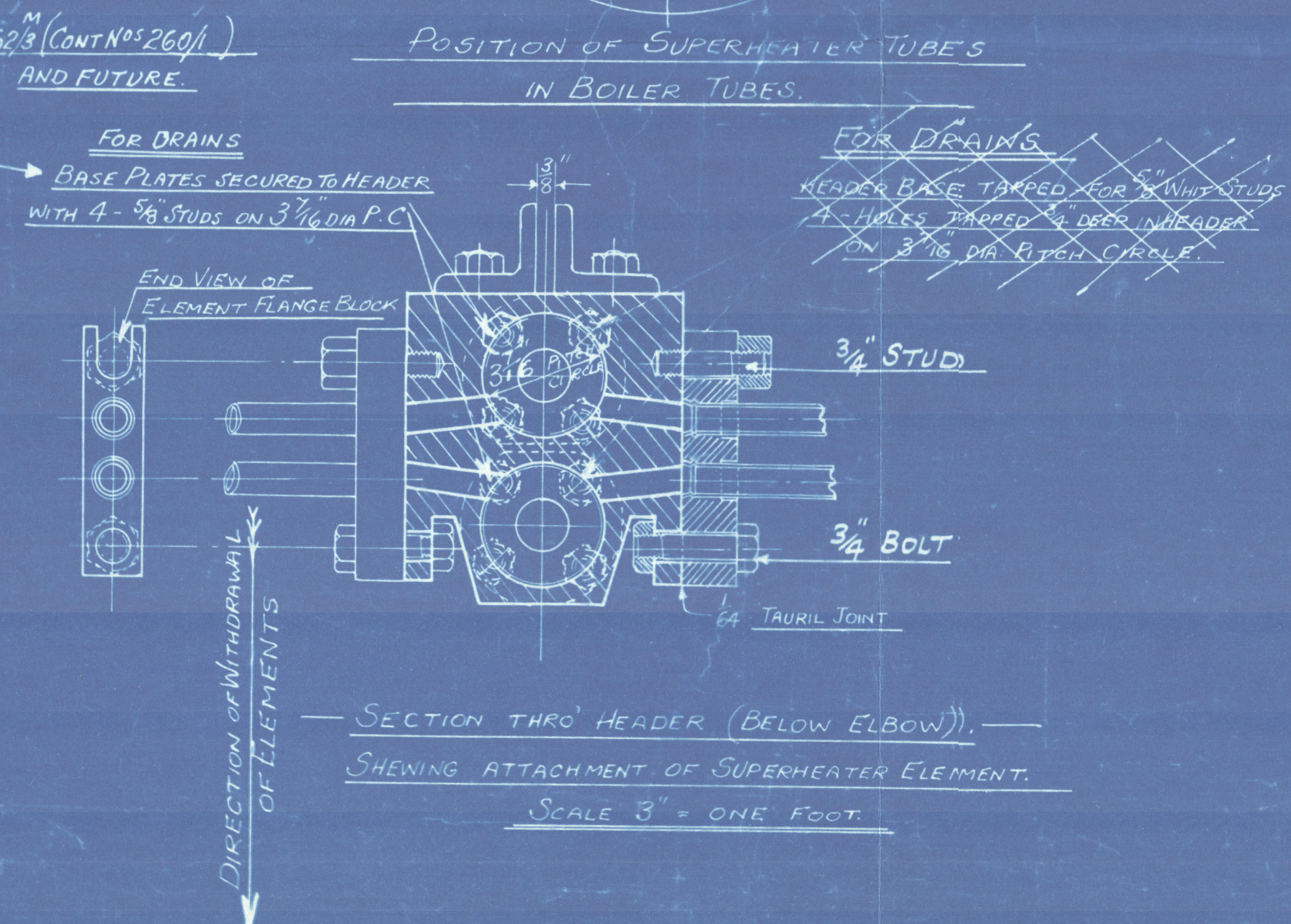
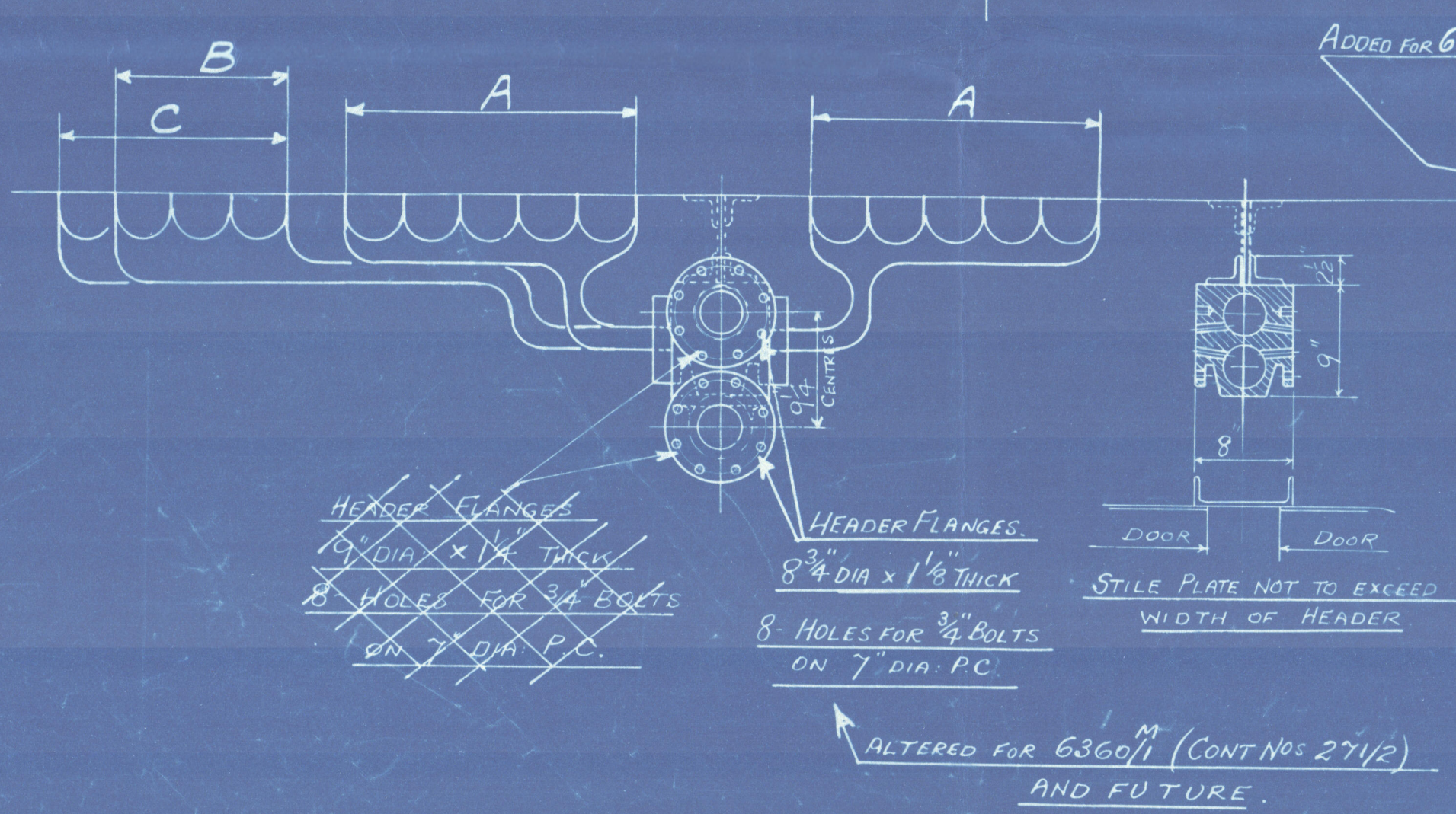


SPACERS TO BE WELDED BETWEEN ALL ELEMENTS
EXTENDING 9" OR 6" INSIDE 90



217	PLAIN TUBES	3 1/2" EXT DIA	X	8 WG THICK
95	STAY "	3 1/2" "	X	5/16" THICK MARKED
4	"	3 1/2" "	X	7/16" " "
316	TOTAL TUBES PER BOILER			

1" DRAIN VALVES ARE SUPPLIED BY THE SUPERHEATER CO. AND MUST BE FITTED BEFORE STARTING UP INSTALLATION.



NUMBER OF SHIPS	= 2
NUMBER OF BOILERS	3 PER SHIP NATURAL DRAUGHT - COAL FIRED
WORKING PRESSURE	= 180 LBS PER SQ IN
GRATE AREA	= 656 sq ft = 197 sq ft PER SHIP
HEATING SURFACE	= 2639 sq ft = 791 sq ft PER SHIP
SUPERHEATED SURFACE	= 1200 sq ft = 3600 sq ft PER SHIP

TO PASS LLOYDS SURVEY
TEST PRESSURE 540 LBS PER SQ IN

THE SUPERHEATER CO LTD BUSH HOUSE LONDON W C 2	
TITLE	ARRANGEMENT OF SUPERHEATER "R.B" TYPE.
REVISED	DRAWING NO 2
ORDERING	6117M 2/11/34
6118M 2/11/34	MN 5160
JOHN DICKINSON & SONS LIMITED	
CONTRACT NO 255 AND 256	
CONTRACT NO 260 AND 261	
CONTRACT NO 271 AND 272	

SCALE
1" = ONE FOOT
DWG NO 101X/34
3/11/32

W189-0192

Llanover
Sed 31581
Llangollen