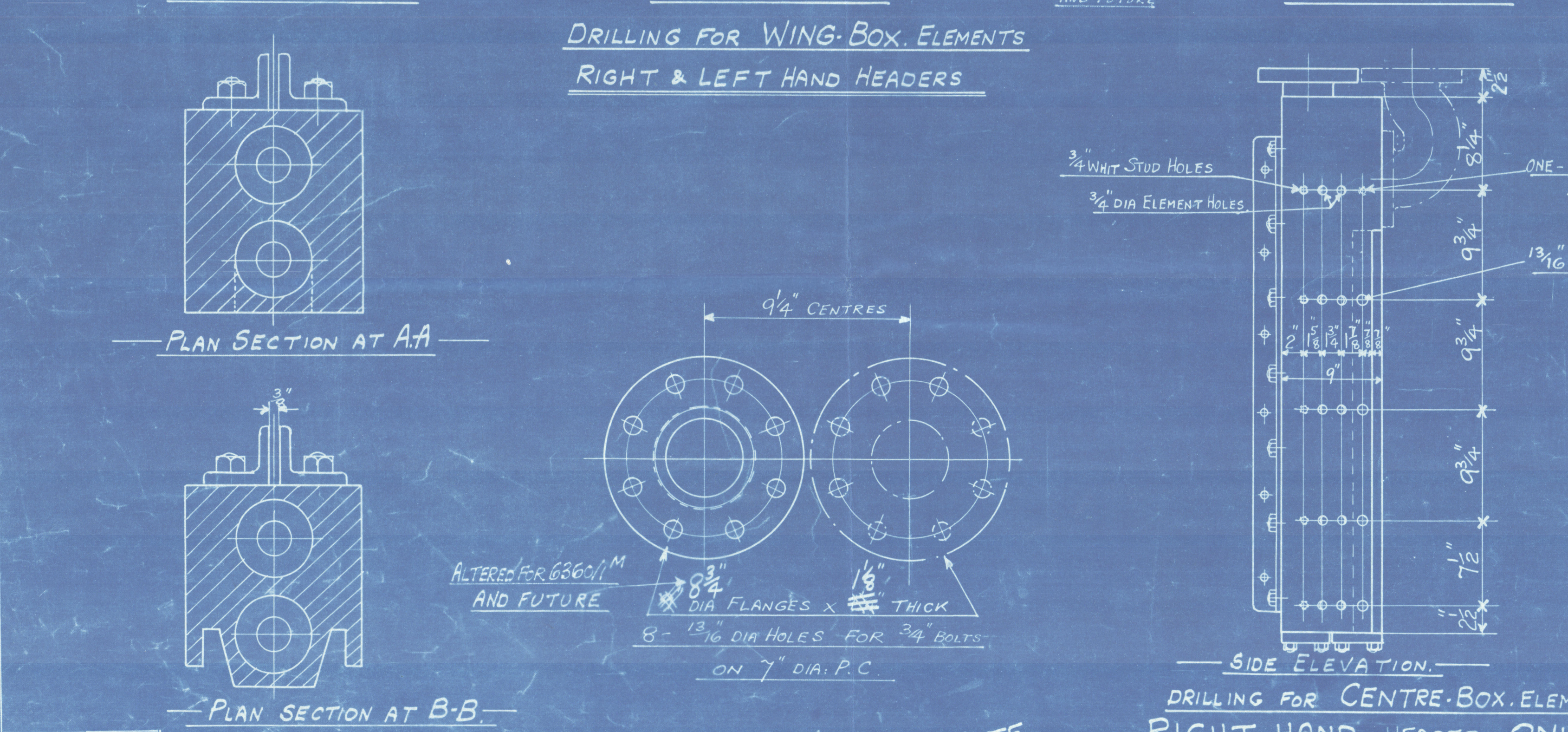
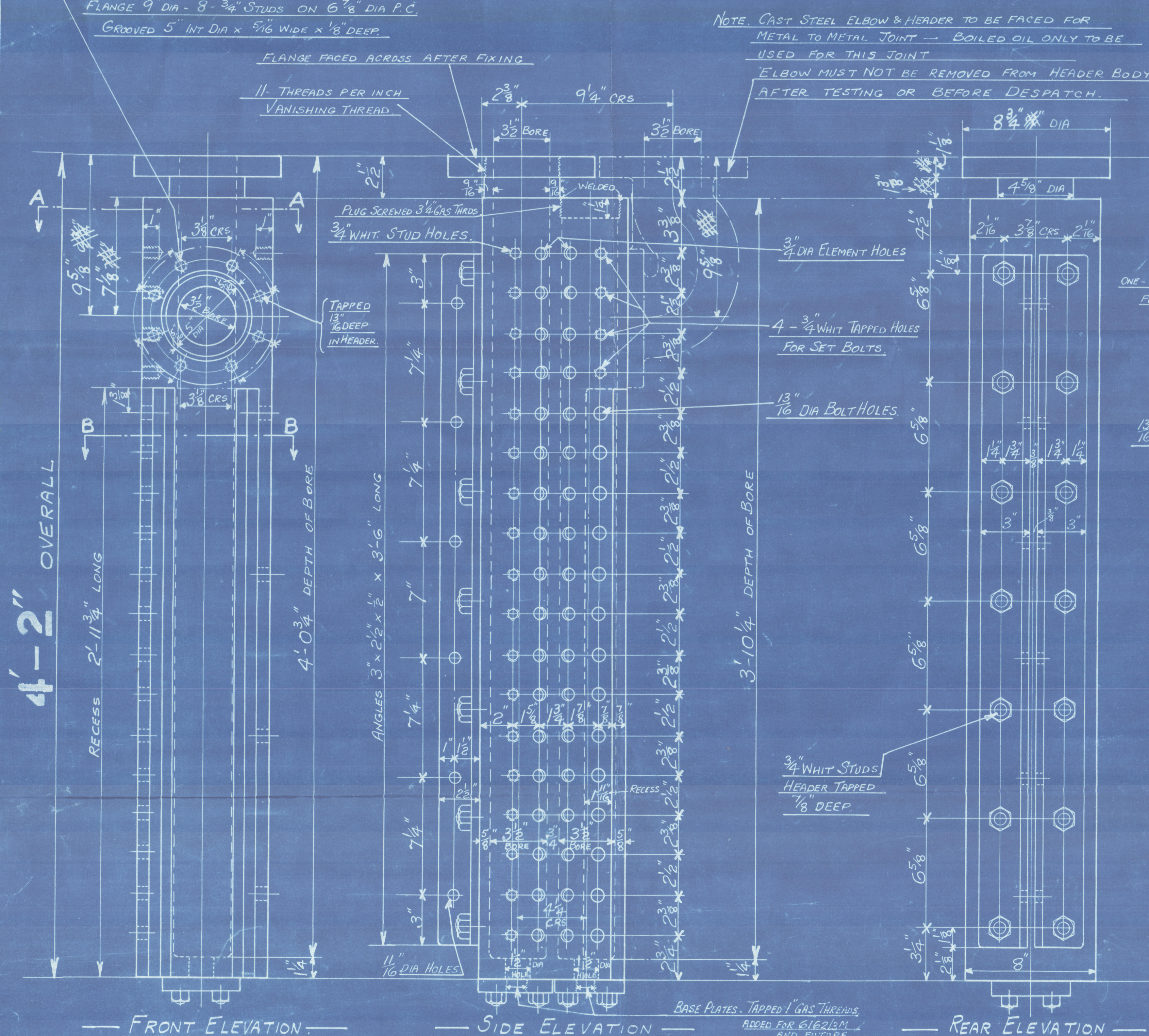


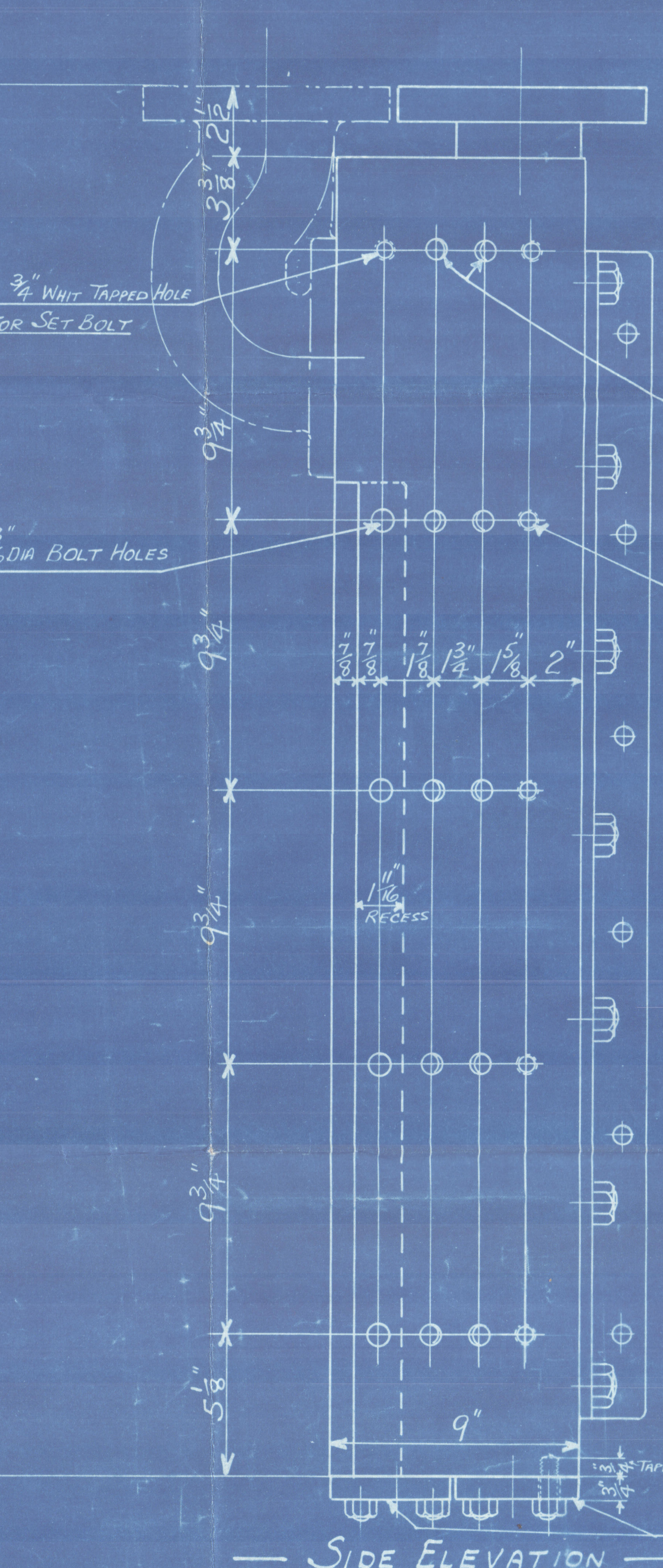
REVISION
B 1/10/32
REMARKS
BASE PLATES ADDED FOR G118M AND FUTURE
FLANGES ALTERED FOR G360M AND FUTURE
ELBOW TO DRAG NO ML 740
ML 740
ALTERED FOR G360M
AND FUTURE



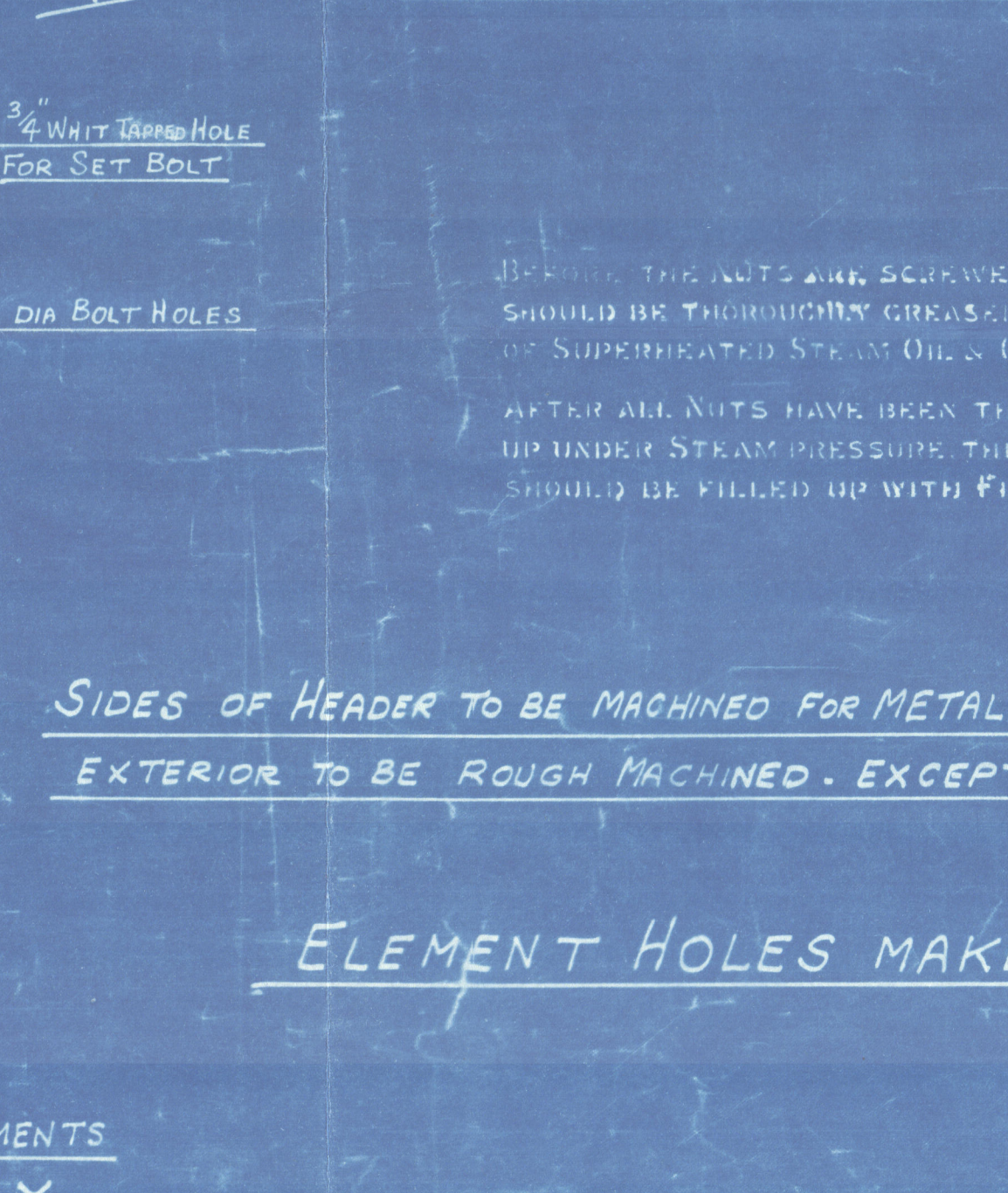
SCALE
3" = ONE FOOT
1/11/32
25/11/32

LEFT HAND HEADER DRAWN

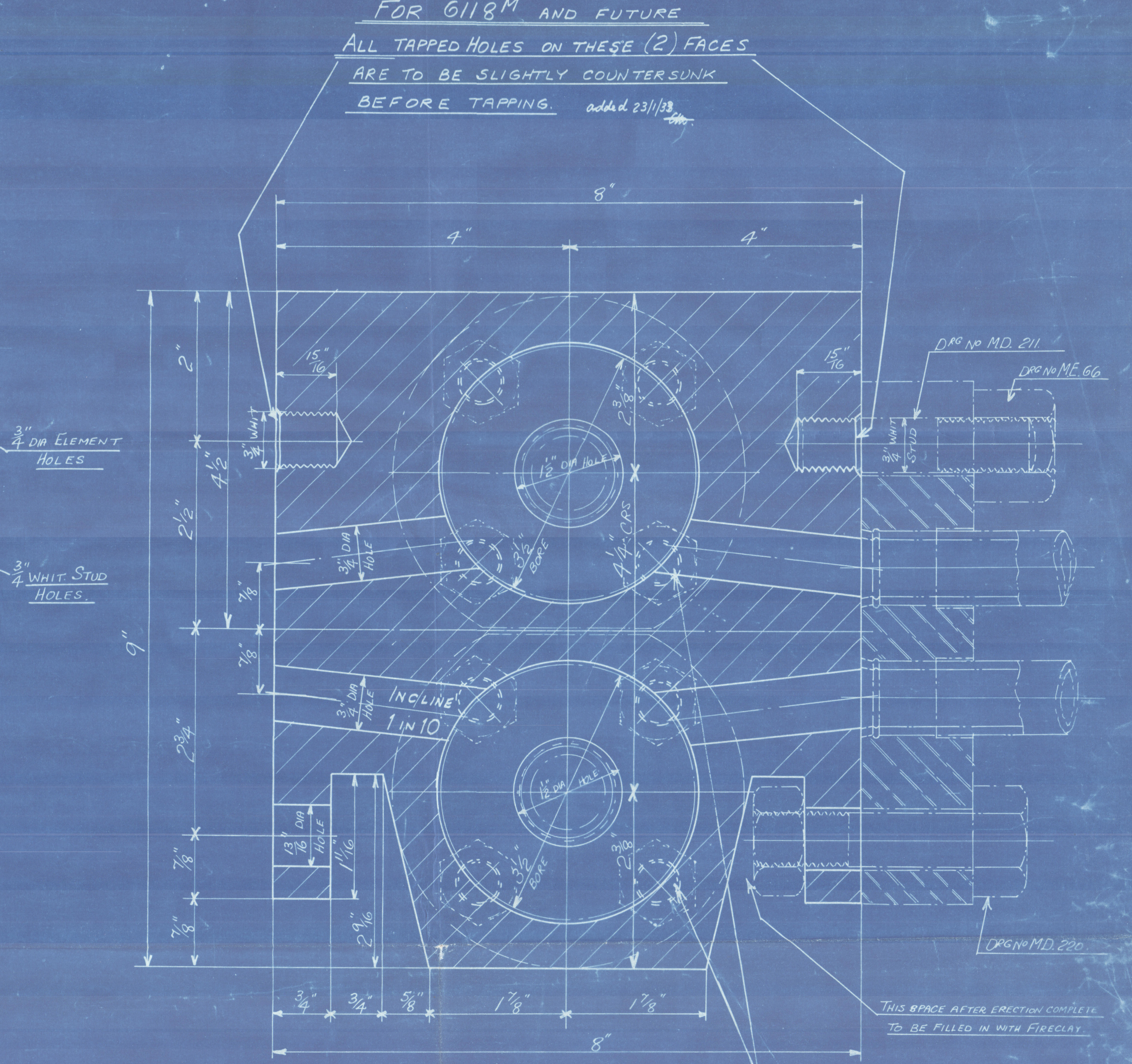
NOTE. CAST STEEL ELBOW & HEADER TO BE FACED FOR METAL TO METAL JOINT — BOILED OIL ONLY TO BE USED FOR THIS JOINT
ELBOW MUST NOT BE REMOVED FROM HEADER BODY AFTER TESTING OR BEFORE DESPATCH.



NOTE
DRILLING FOR CENTRE BOX ELEMENTS
LEFT-HAND HEADER ONLY.



NOTE
DRILLING FOR CENTRE BOX ELEMENTS
RIGHT-HAND HEADER ONLY



DETAIL PLAN SECTION (ABOUT B-B)
FULL SIZE
FOR G118M AND FUTURE
ALL TAPPED HOLES ON THESE (2) FACES ARE TO BE SLIGHTLY COUNTERSUNK BEFORE TAPPING.
added 23/1/33

STEEL FORGING
TO PASSLOYDS SURVEY
WORKING PRESSURE 180 LBS PER SQ. INCH
TEST 540

PER BOILER
1-OFF RIGHT HAND
1-OFF LEFT HAND
SEE ARRANGEMENT DRG NO M.N. 8160

THE SUPERHEATER CO. LTD.
BUSH HOUSE LONDON W C 2
TITLE HEADERS

ORDER NO'S	REF. CKD	DRAWING NO.
G162M G118M G117M	1/11/32	MA 5540
G361M G360M G163M	1/11/32	MA 5540
JOHN DICKINSON & SONS LIMITED		
CONTRACT NO'S 255 & 256		
" " NO'S 260 & 261		
" " NO'S 271 & 272		

Llanover
led 31581
Llangollen
W187-0187