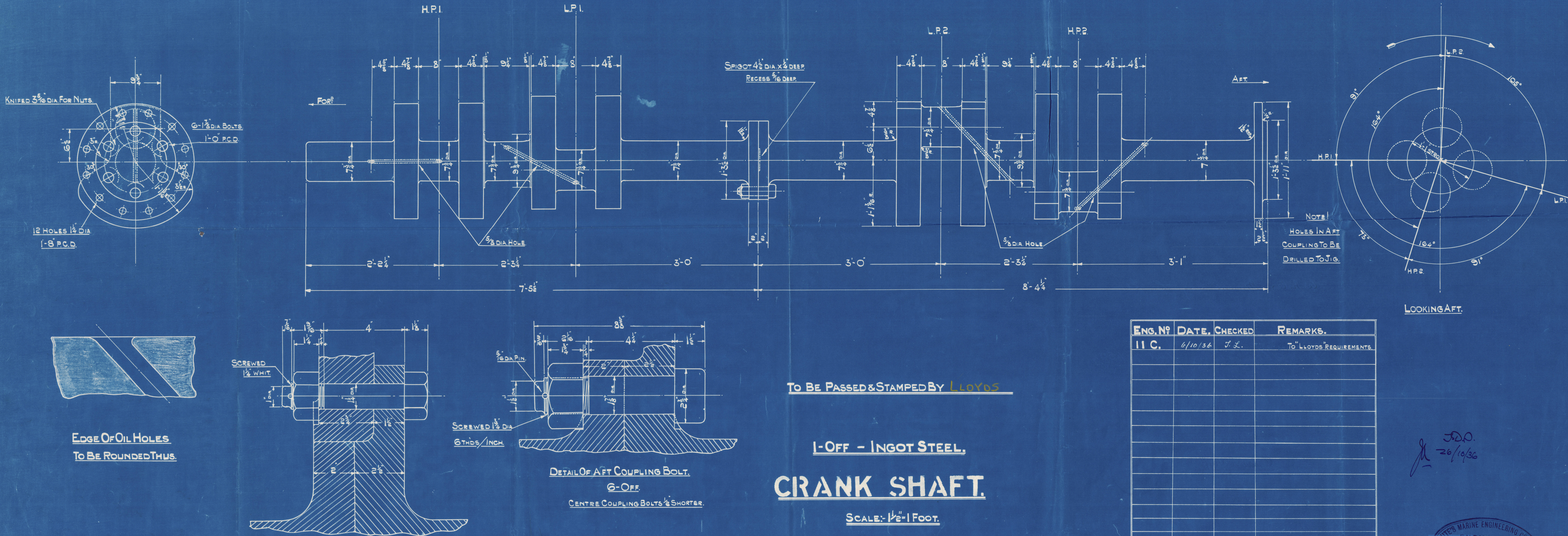


WHITE & MARINE ENGINEERING CO., LTD.
HELBURN-ON-TYNE



DRAWING N° C 458.

TO BE PASSED & STAMPED BY LLOYDS

1-OFF - INGOT STEEL.

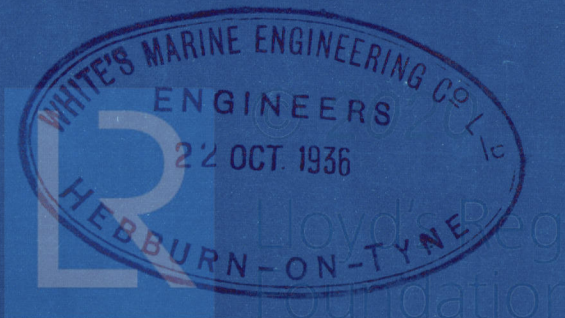
CRANK SHAFT.

SCALE:- 1 1/2" = 1 FOOT.

CHARGE TO ENGINE N° C/2.

[illegible]

J.D.P.
26/10/36



White's Marine Eng. Co. Ltd.

Engine No 11.c.

for Short Bros. Yard No 450

Steamship "Blancher"
Biddlestone;

Sld. 23139.

Crankshaft.



Drg No 458.

W1188-0029



Lloyds Register
Foundation