

BOILER CONTRACT N° 933.

HEATING SURFACE.

TUBES	2141 #
FURNACES TOTAL SURFACE	526 #
COMBUSTION CHAMBER SIDES & BACK	530 #
BACK TUBE PLATE	58 #
FRONT TUBE PLATE	50 #
TOTAL ONE BOILER	2905 #
* THREE BOILERS	8715 #

WORKING PRESSURE 220 LBS. D"

TEST PRESSURE 580 " "

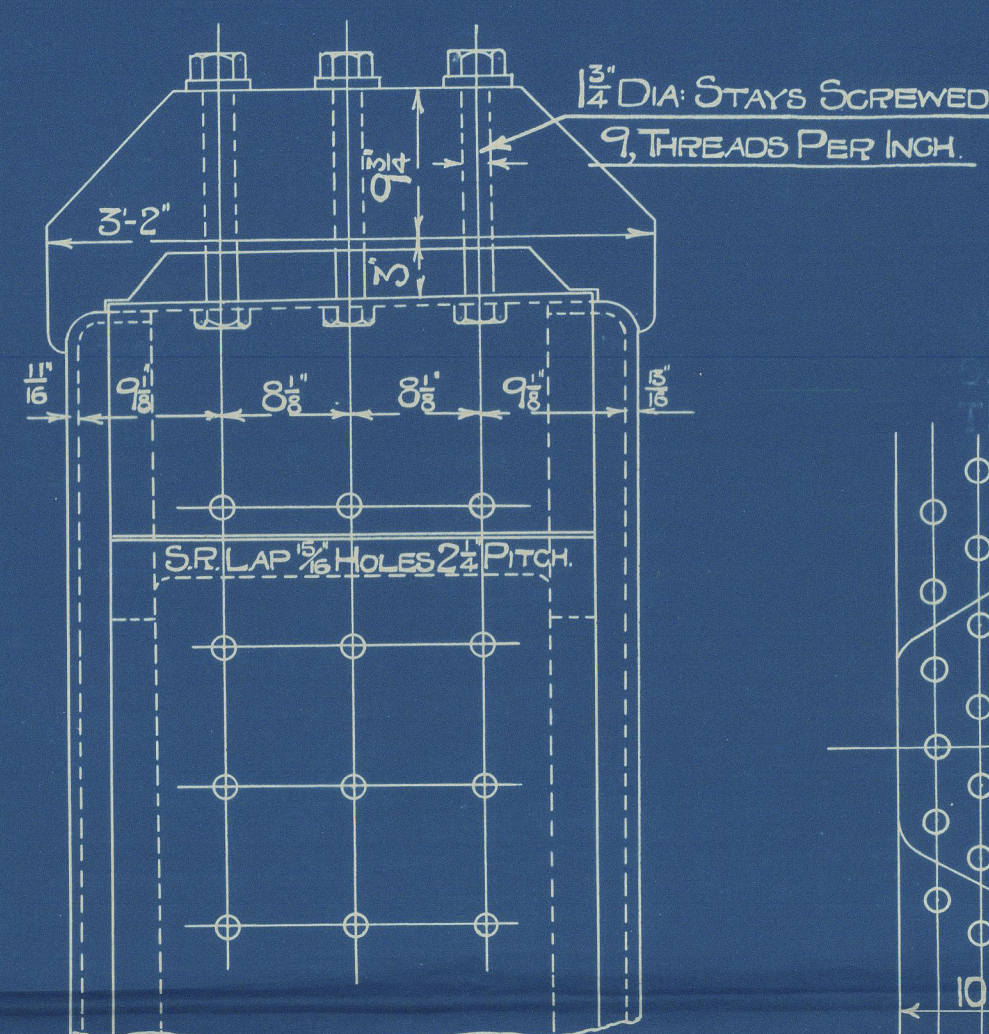
EACH BOILER FITTED WITH COCKBURN'S IMPROVED HIGH LIFT

SAFETY VALVE 2" BORE DOUBLE.

BOILERS TO BURN OIL FUEL ONLY. TO WORK UNDER

HOWDEN'S FORCED DRAUGHT AND FITTED WITH

SMOKE TUBE TYPE SUPERHEATERS.



DETAIL OF G.C. GIRDERS
ON WING G.C.S ONLY.

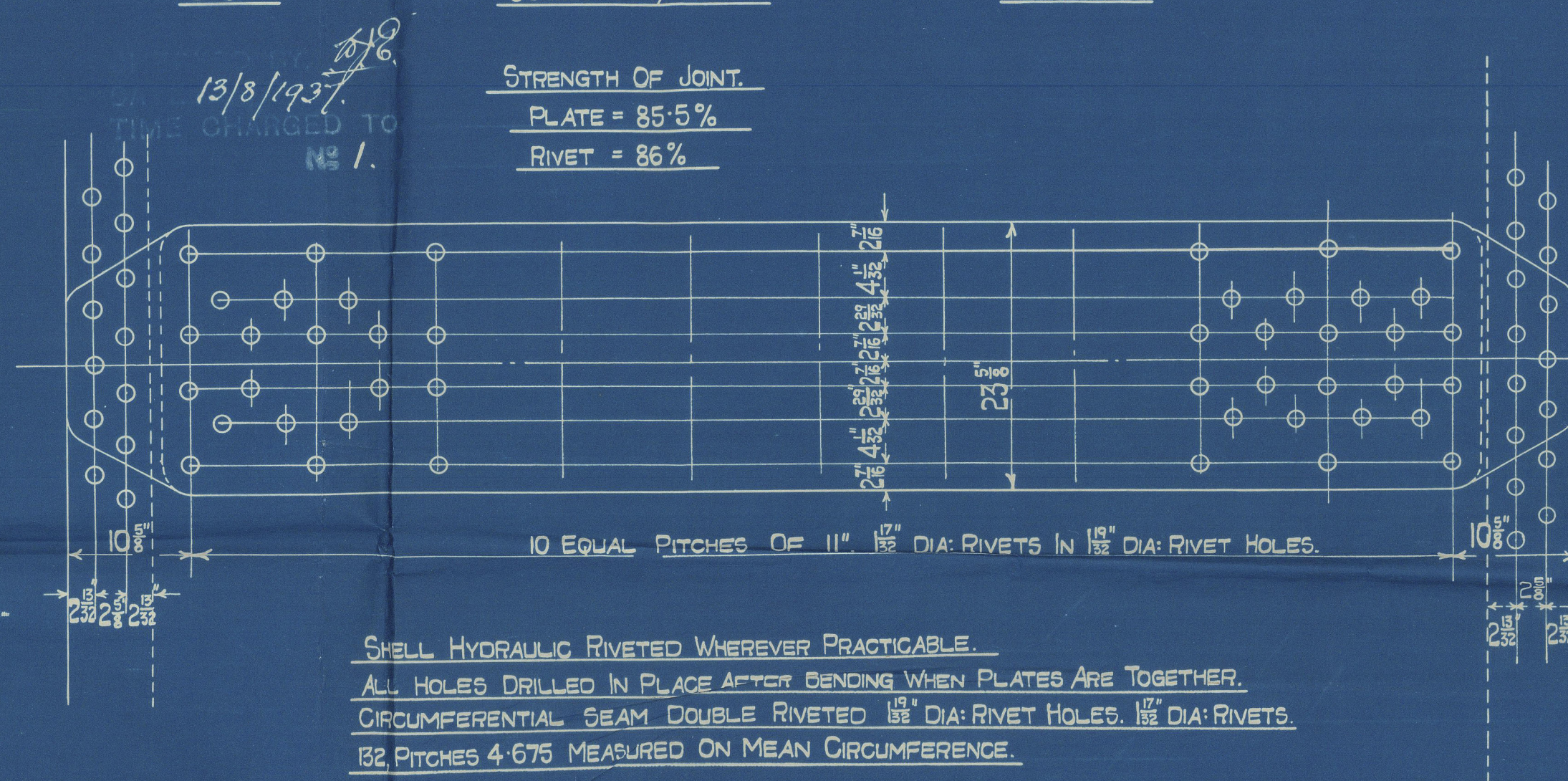
MESSRS: SWAN, HUNTER & WIGHAM RICHARDSON. SHIP N° 1555.

CONSTRUCTED TO PASS LLOYDS SURVEY.

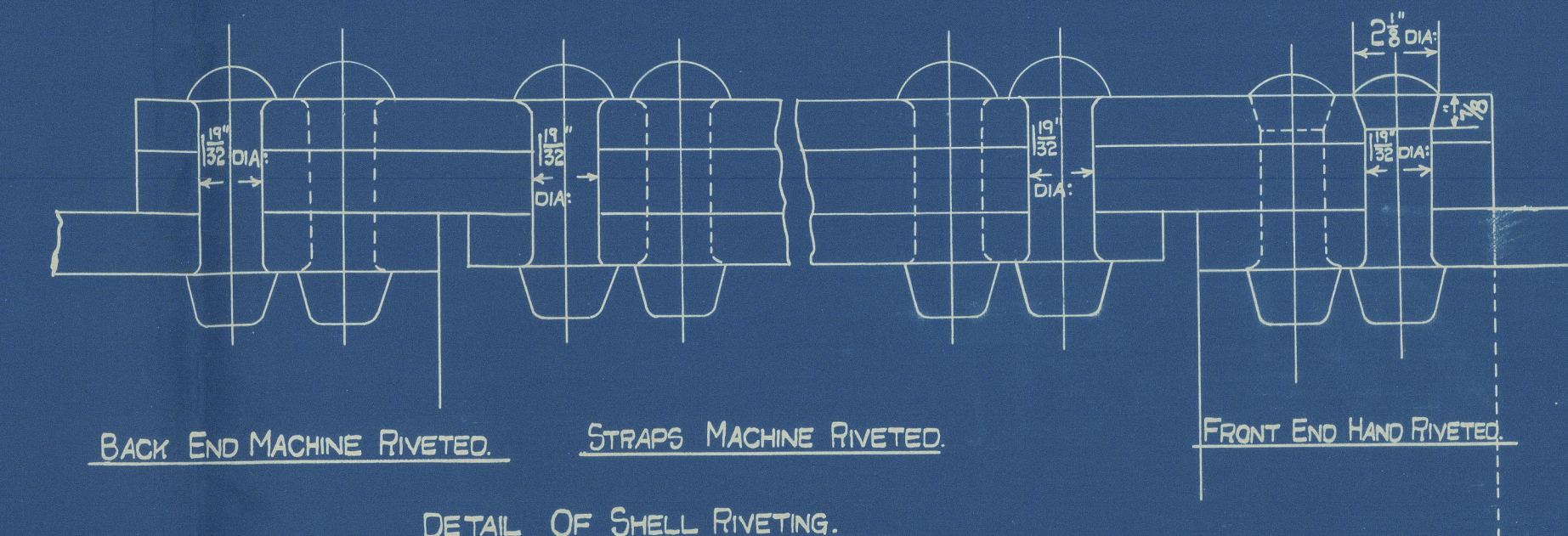
3" OFF.

SCALE: 1" = 1' FOOT.

PLAN N° 94.

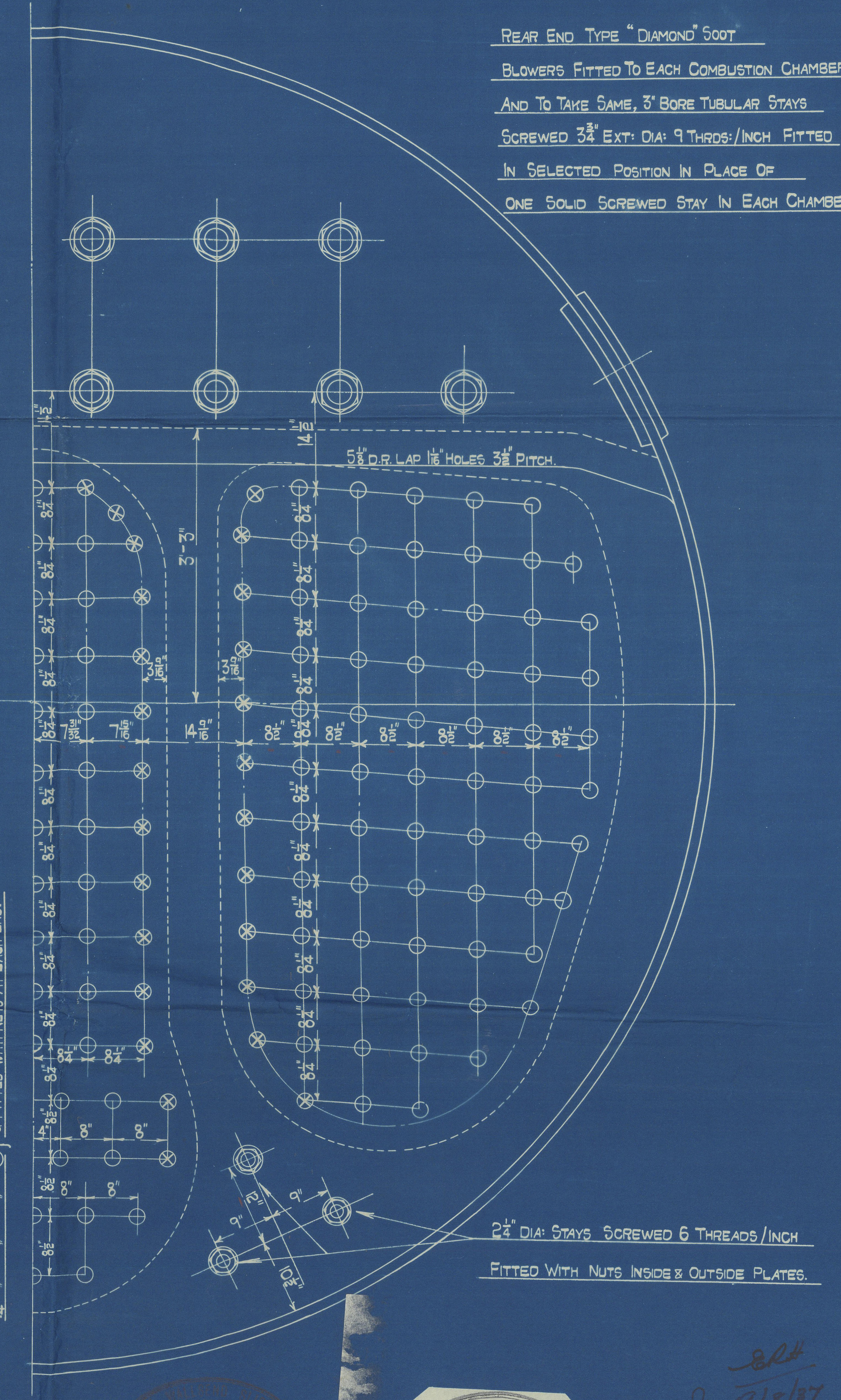
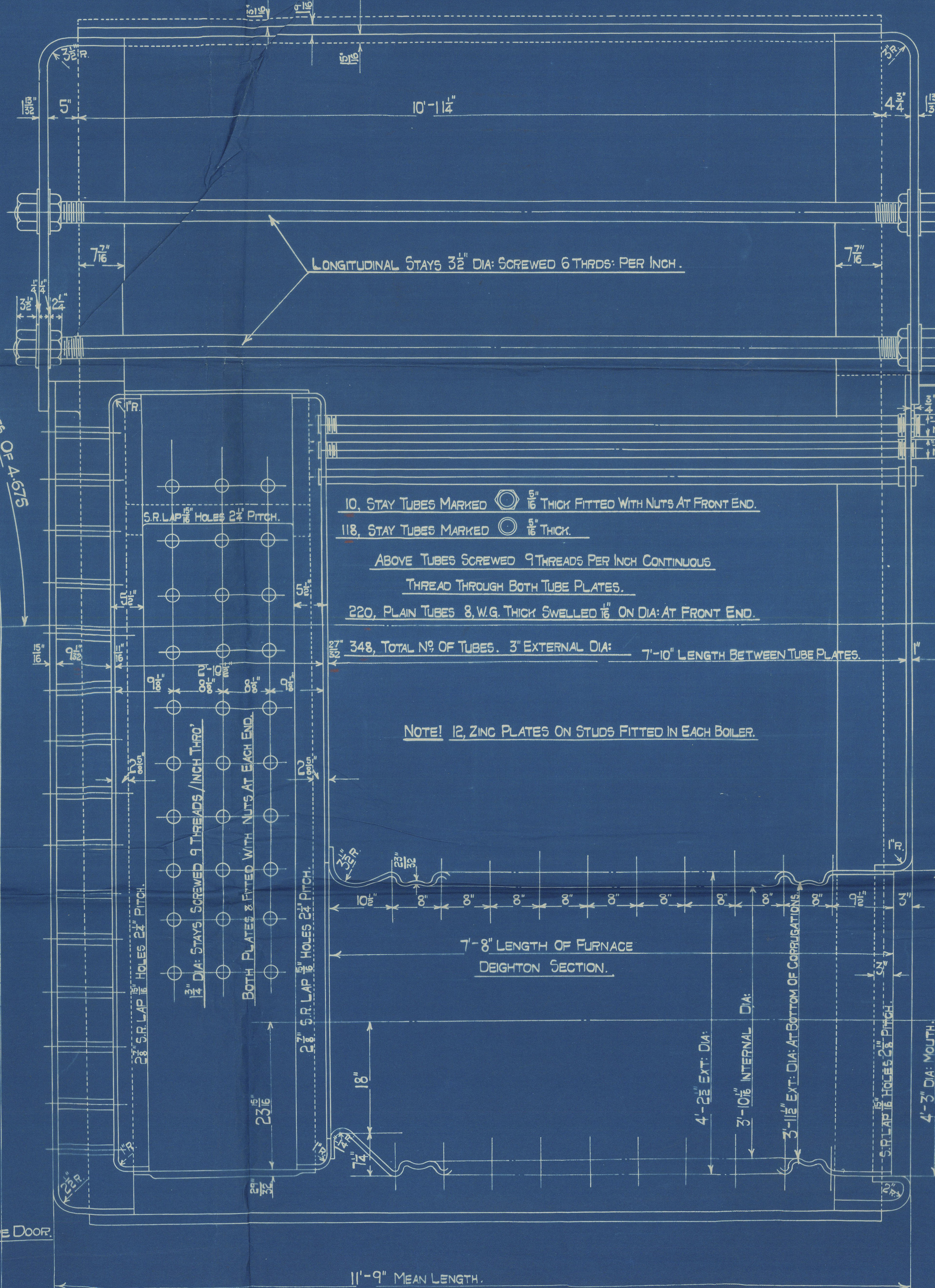
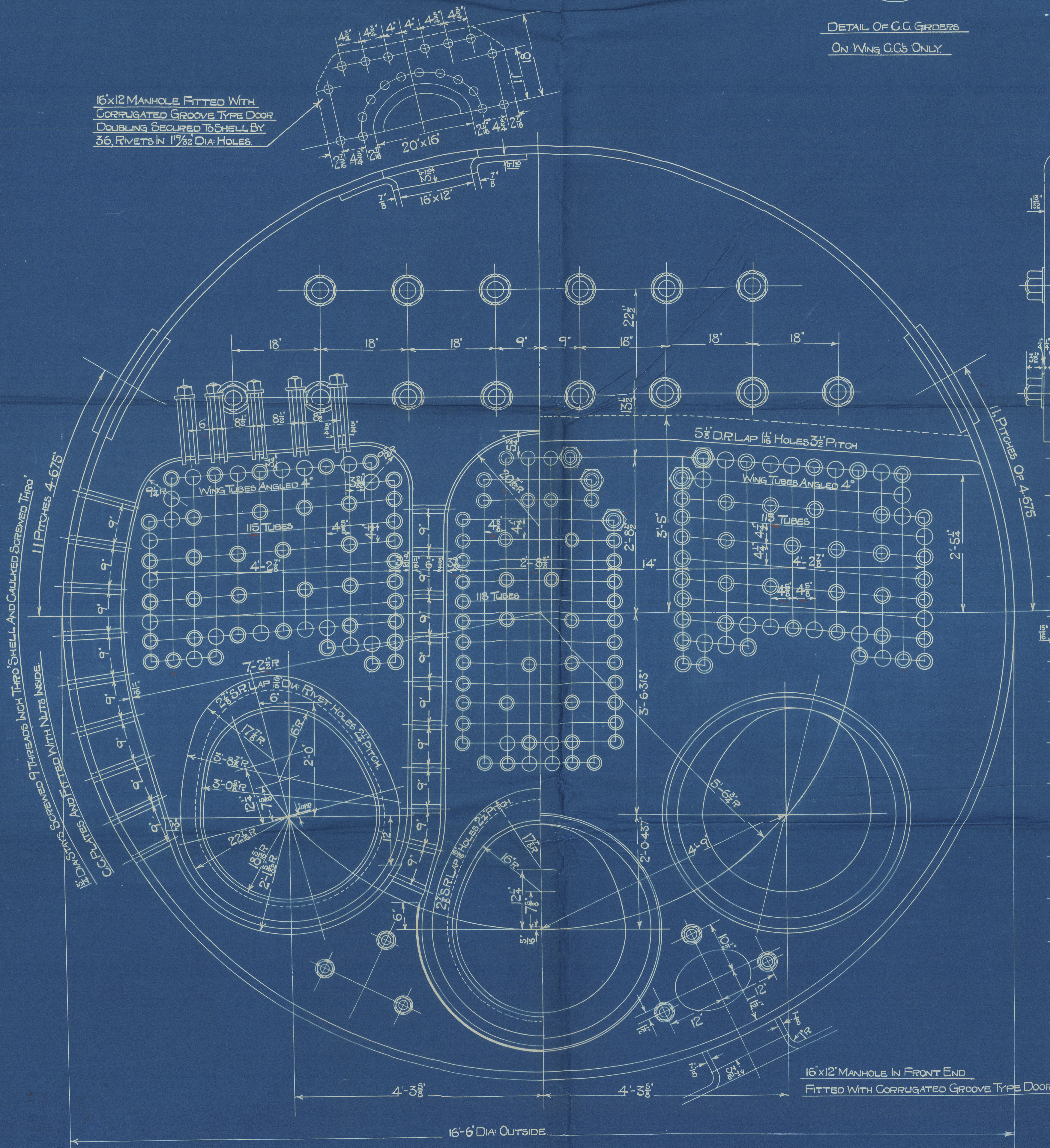


SHELL HYDRAULIC RIVETED WHEREVER PRACTICABLE.
ALL HOLES DRILLED IN PLACE AFTER BENDING WHEN PLATES ARE TOGETHER.
CIRCUMFERENTIAL SEAM DOUBLE RIVETED 18" DIA: RIVET HOLES. 18" DIA: RIVETS.
18" PITCHES 4-675 MEASURED ON MEAN CIRCUMFERENCE.



DESCRIPTION.	MATERIALS.	TENSILE STRENGTH.
SHELL, BUTT STRAPS & GIRDERS PLATE.	STEEL.	24-35 TONS D"
FURNACES WRAPPER & FLANGED PLATES.	"	26-30 " "
LONGITUDINAL STAYS.	"	28-32 " "
C.G. SCREWED STAYS.	"	26-30 " "
RIVET BARS.	"	26-30 " "
TUBES.	HT ROLLED INWARD-ROD STEEL	28 TONS MAXIMUM.

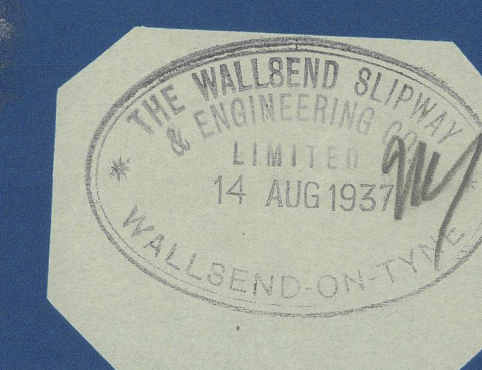
FLANGED PLATES TO BE ANNEALED.



18" DIA: STAYS MARKED WITH 'X' SCREWED 9 THRS: PER INCH THRO' BOTH PLATES.
18" DIA: STAYS MARKED WITH 'O' & FITTED WITH NUTS AT EACH END.

REAR END TYPE "DIAMOND" SOOT
BLOWERS FITTED TO EACH COMBUSTION CHAMBER
AND TO TAKE SAME, 3" BORE TUBULAR STAYS
SCREWED 3 1/2" EXT. DIA: 9 THRS: / INCH. FITTED
IN SELECTED POSITION IN PLACE OF
ONE SOLID SCREWED STAY IN EACH CHAMBER.

2 1/2" DIA: STAYS SCREWED 6 THRS: PER INCH
FITTED WITH NUTS INSIDE & OUTSIDE PLATES.



18/8/37



1186-0297

THE WALLSEND SLIPWAY
& ENGINEERING CO. LTD.

NEWCASTLE-ON-TYNE

Boilers no 933
W.P. 220 lbs.

s. s. "La Barriere."

NEWCASTLE ON TYNE.

Report No. 96584.

~~SWAN, HUNTER, & WIGHAM~~
RICHARDSON LTD.

SHIP NO. 1555

"LA CARRIERE"

N^o 776

LLOYDS TEST

380 LBS

W.P. 220 LBS

17-5-38 J.E.S.



© 2020

W186-0297
Lloyd's Register
Foundation