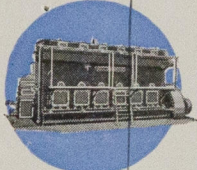
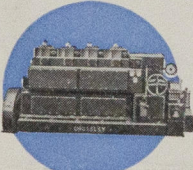


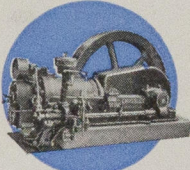
6 to 120 BHP High Speed Four-Stroke Diesel Engines. Lighting Sets. Automatic Lighting Sets.



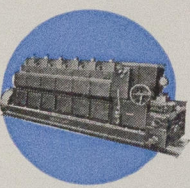
150 to 800 BHP Four-Stroke Medium Speed Diesel Engines. Also Convertible Gas Engines.



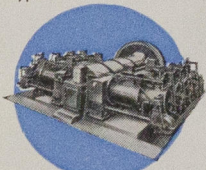
50 to 500 BHP Scavenge Pump Diesel Locomotive Engines. Heavy-duty Shunting Locomotives.



10 to 250 BHP Horizontal Heavy-duty Diesel Engines. Convertible and Gas Engines.



50 to 450 BHP Scavenge Pump Diesel Marine Engines—Direct Reversing. Also Stationary Types.



250 to 3000 BHP Crossley Premier Multi-Cylinder Horizontal Engines. Oil, Convertible and Gas.

ALSO
GAS PLANTS USING COAL,
COKE, PEAT, WASTE WOOD,
ETC.



CROSSLEY BROTHERS LTD

THE PIONEERS AND LEADING MAKERS OF THE INTERNAL COMBUSTION ENGINE

Inland Telegrams: 'Gasengine (phone) Manchester' :: Foreign Telegrams: 'Gasengine Manchester'
Telephone: East 1353 (5 lines) :: Branches and Agencies throughout the world. All principal codes used.
LONDON OFFICE: BUSH HOUSE, ALDWYCH, WC2 :: Works: Manchester, Stockport & Nottingham.

Our Ref: FMH/P/AL.

Your Ref: "E"

HEAD OFFICE AND WORKS:
OPENSHAW · MANCHESTER · II
MARINE ENGINE DEPARTMENT

26th March 1938.

The Secretary,
Messrs. Lloyd's Register of Shipping,
71, Fenchurch Street,
LONDON.

LLOYD'S REGISTER
R
28 MAR 1938
And.
LONDON

Dear Sirs,

THE WALLSEND SLIPWAY & ENGINEERING CO.
CONTRACT No. 933.

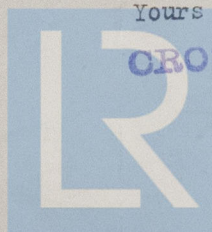
We are pleased to acknowledge receipt of your letter of the 23rd instant, relating to the above order, which is for a 45 KW. generating set to be fitted in the above vessel.

We have been doing our utmost to obtain a surveyed receiver for this order, and are pleased to inform you that the Newport & South Wales Tube Company, have promised to deliver us a surveyed receiver in order that we may keep to our contract delivery date.

We deeply regret having put you to so much trouble in this respect regarding the air receiver, but you will appreciate that it was necessary for us to take some steps in order to avoid delaying the departure of this new vessel.

Thanking you once again for your co-operation and attention, and assuring you of our best services at all times.

We are,
Yours faithfully,



CROSSLEY BROTHERS LTD

Price.

Lloyd's Register
Foundation

W186-0273

Referred to the Chief Engineer Surveyor

28 MAR 1938

W.B.
Admiral Marmaduke Luss.

Noted
JR
28/3/38
[Signature]



© 2020

Lloyd's Register
Foundation