

MIDSHIP SECTION.

S.S.N° 270.

LENGTH B.P. 276'-0". BREADTH M° 40'-0". DEPTH M° 20'-8".
TO CLASS 100A.1 AT LLOYD'S RAISED QUARTER DECK TYPE.

SCALE 1/2" = 1 FOOT.

EQUIPMENT NUMBER.

HULL = 16742-16
QUARTER DECK 102-4-33 = 443-65
BRIDGE DECK 56-73-7-83-75 = 333-50
FORECASTLE DECK 27-25-7-75 = 143-06
CASINO 2-7-5-5 = 183-75
17816-12

EQUIPMENT.

2 POWER ANCHORS 56 cwt. stockless.
1 STREAM 9 1/2" EX. STOCK.
1 KEDGE 4 1/2"
240 FATHOMS 1 1/2" STUD CHAIN CABLE.
75 4" STEEL WIRE ON REEL.
90 3 1/2"
90 2 1/2"
90 2"
90 1 1/2"
90 1"
5 MANILA.

NUMERALS.

BREADTH 40'-0"
DEPTH 20'-8"
B+D = 60'-6" TRANS. N°.

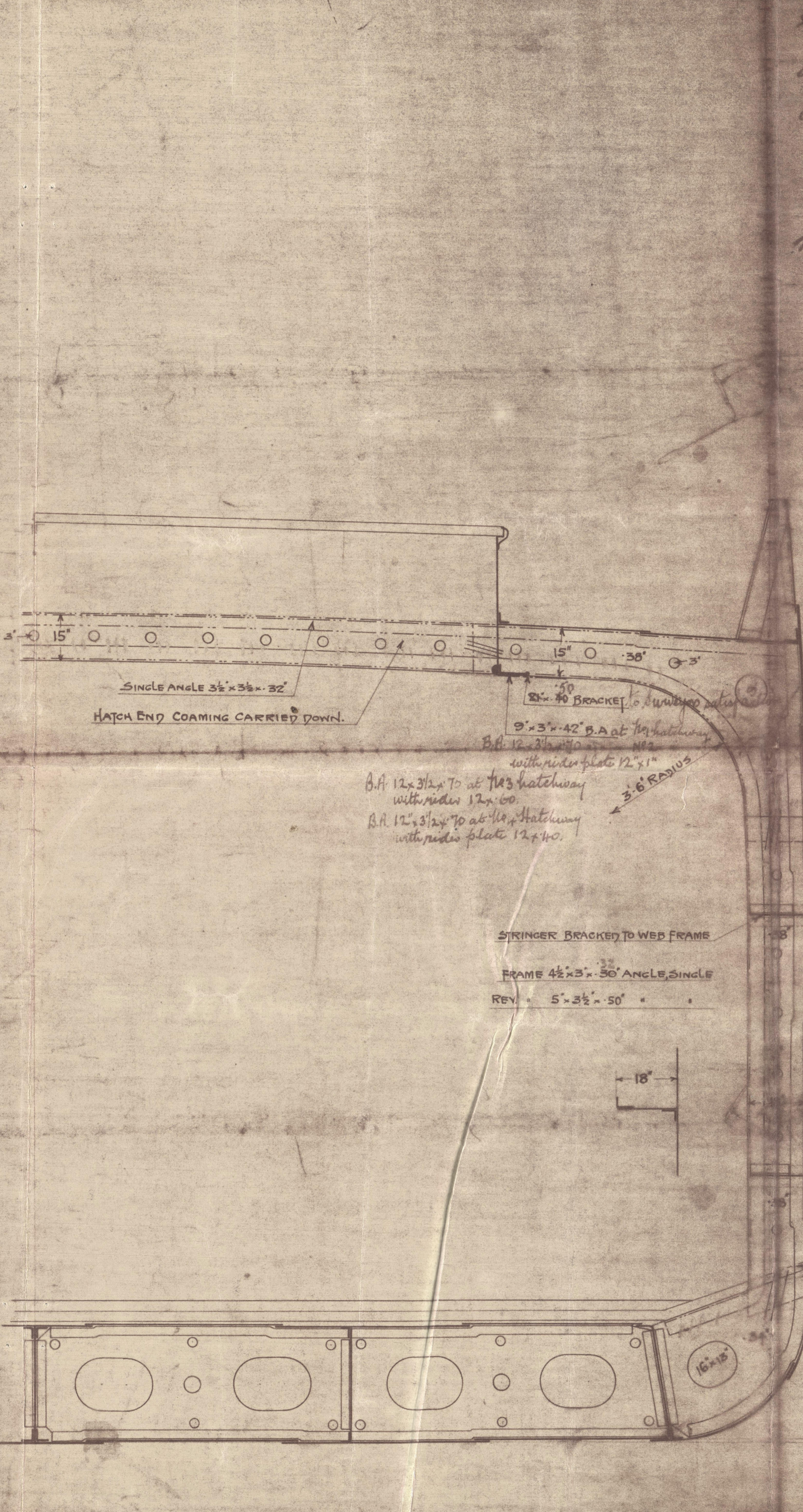
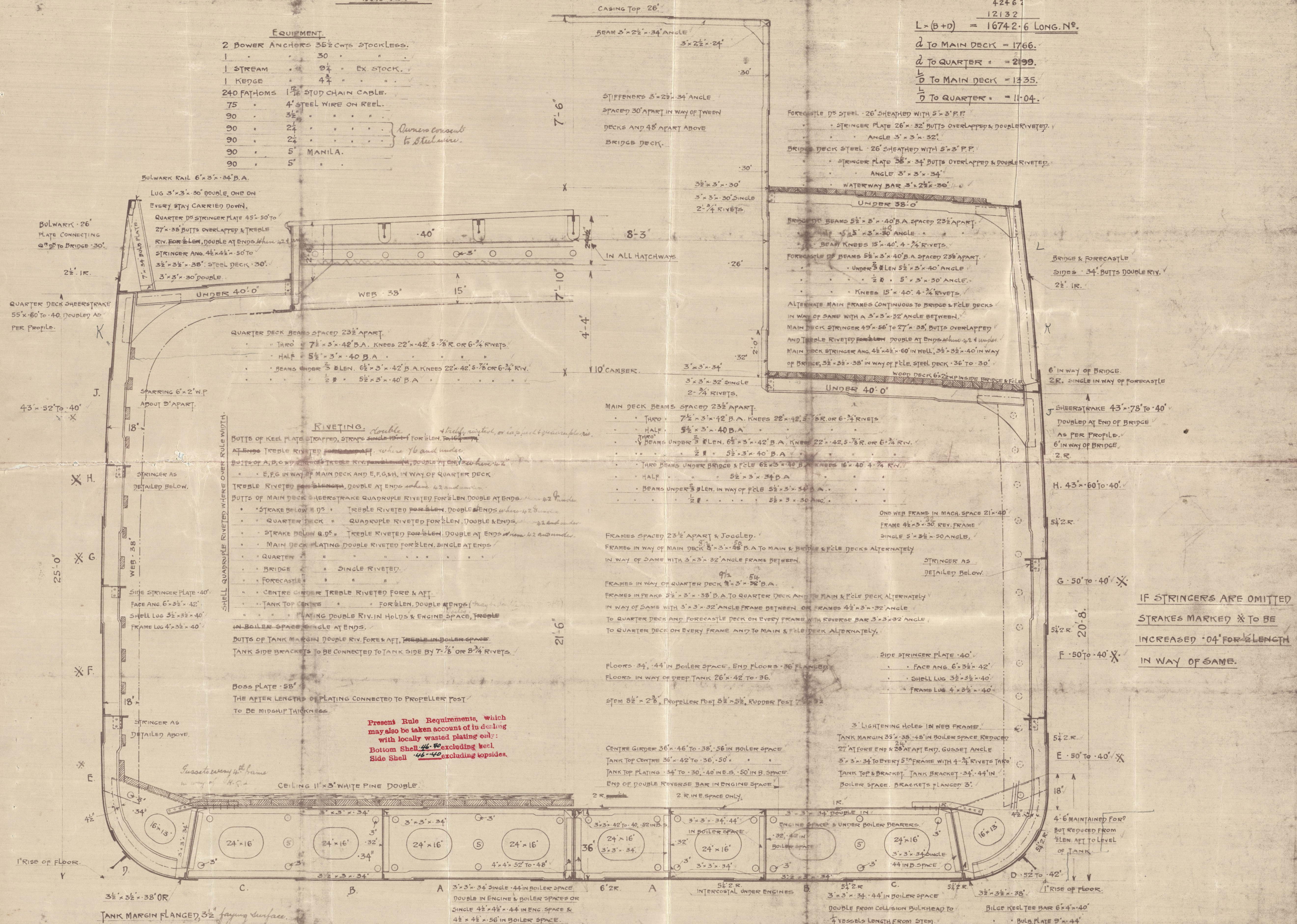
25
36345
42461
12132
L = (B+D) = 16742-6 LONG. N°.

d TO MAIN DECK = 1766.

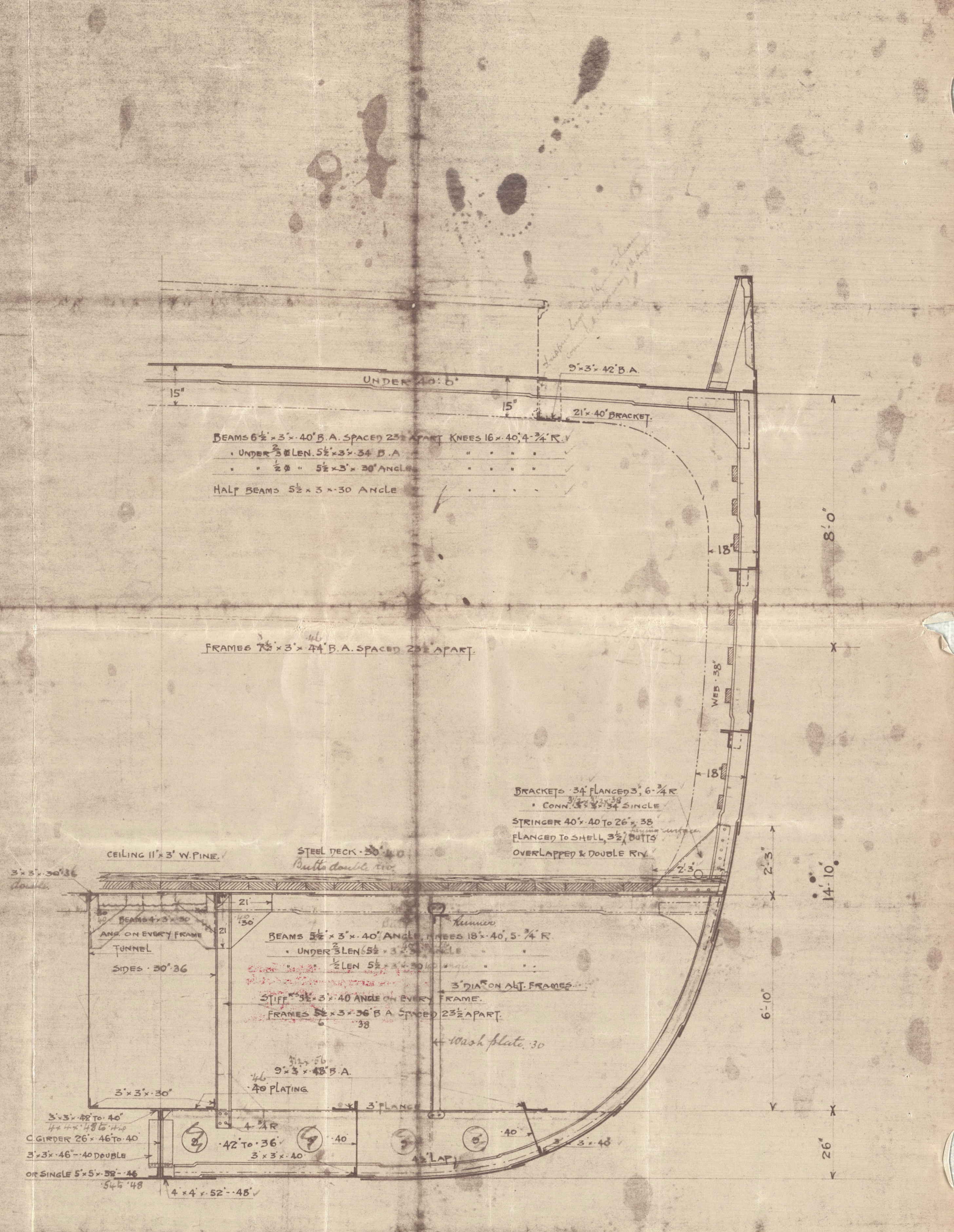
d TO QUARTER = 2199.

d TO MAIN DECK = 1235.

d TO QUARTER = 1104.



Handwritten notes:
1. 1/2\"/>



SECTION OF WEB IN HOLD.

SECTION AT FORE END OF DEEP TANK.

KEHREA'

MIDSHIP SECTION

Per rep L No. 5754.

W186-0033



© 2020

Lloyd's Register
Foundation