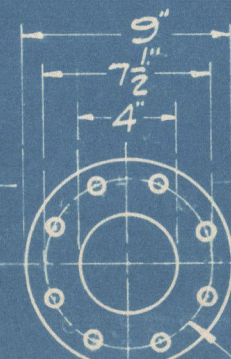


Technical drawing of a circular plate with the following dimensions:

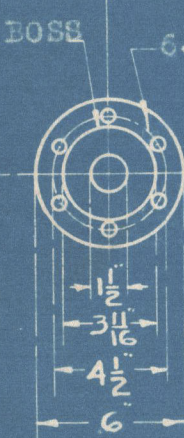
- Outer diameter: 9"
- Middle diameter: $7\frac{1}{4}$ "
- Inner diameter: $3\frac{1}{2}$ "

The plate features 12 holes arranged in a circular pattern.

DRILLING OF
MAIN STEAM
NOZZLE



8- 11/16" HOLES
DRILLING OF 2-1/2" DUPLEX
SAFETY VALVE OUTLET



DUSTING DOORS

THIS DRAWING IS THE PROPERTY OF THE BABCOCK & WILCOX CO. NEW YORK			
MARINE TYPE BOILER		PATENTED	
GENERAL ARRANGEMENT			
10° 14 1/2 (4-2")		9'-0" OS	
36 1 (4-2)		TS	
SCALE - 1 FT.		DATE FEB. 11, 1925.	
SHEET		JOB	
MT-160748 -		4 M PA1050-1051	