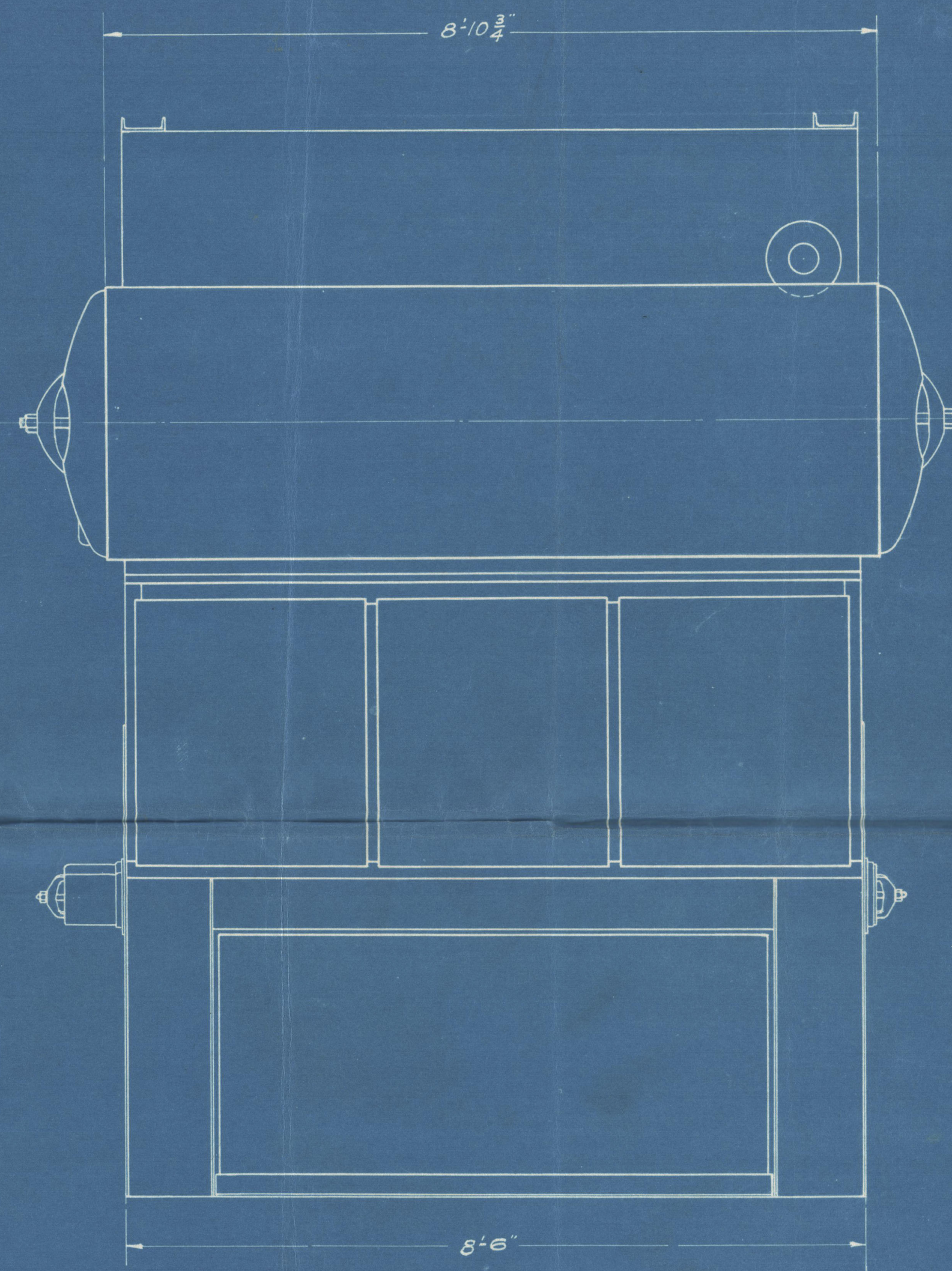


NOTE: ALL CASING JOINTS TO BE SEALED WITH J. M. ARBITRE CEMENT.

BOILER #1 SHOWN

FOR GENERAL ARRANGEMENT SEE SH. MI-150748

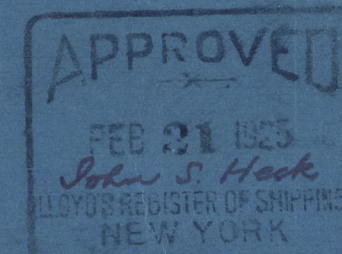


TUBES REQUIRED FOR ONE BOILER AND SUPERHEATER

ALT.	MARK	GAGE	DIAMETER	LENGTH
14	T-1	6 # 11 B.W.G. (.165")	20 3/8 4"	8'-0-3/4" Long
297	T-2	#10 B.W.G. (.134")	2"	9'-2" "
16	T-3	#10 B.W.G. (.134")	2"	13'-7-1/8" Lg. Inner Loop
16	T-4	#10 B.W.G. (.134")	2"	14'-9-3/8" " Outer "
14	T-5	6 # 8 B.W.G. (.165")	20 3/8 4"	6" Long
14	T-6	6 # 8 B.W.G. (.165")	20 3/8 4"	3'-5/8" "

Two rows of 2" tubes need fire to be # 8 B.W.G. = .165"

Approved 2" - 10 B.W.G.
4" - 8 B.W.G.
J.S.H.



FILE 1/2 E. T. Bedford

J. A. Muffin

© 2021

Lloyd's Register
W181-0162

THIS DRAWING IS THE PROPERTY OF
THE BABCOCK & WILCOX CO.
NEW YORK

MARINE TYPE BOILER PATENTED

LONGITUDINAL SECTION AND FRONT VIEW

10° 14 4-1/2 (4-2") 9'-0" OS
36" 1 (4-2") TS

SCALE - 1 FT. DATE FEB. 11, 1925.

SHEET JOB

MI-150925- 2 M. B. 1950-1951

J.S.L. Muffin

PRINTED FOR FILE:-