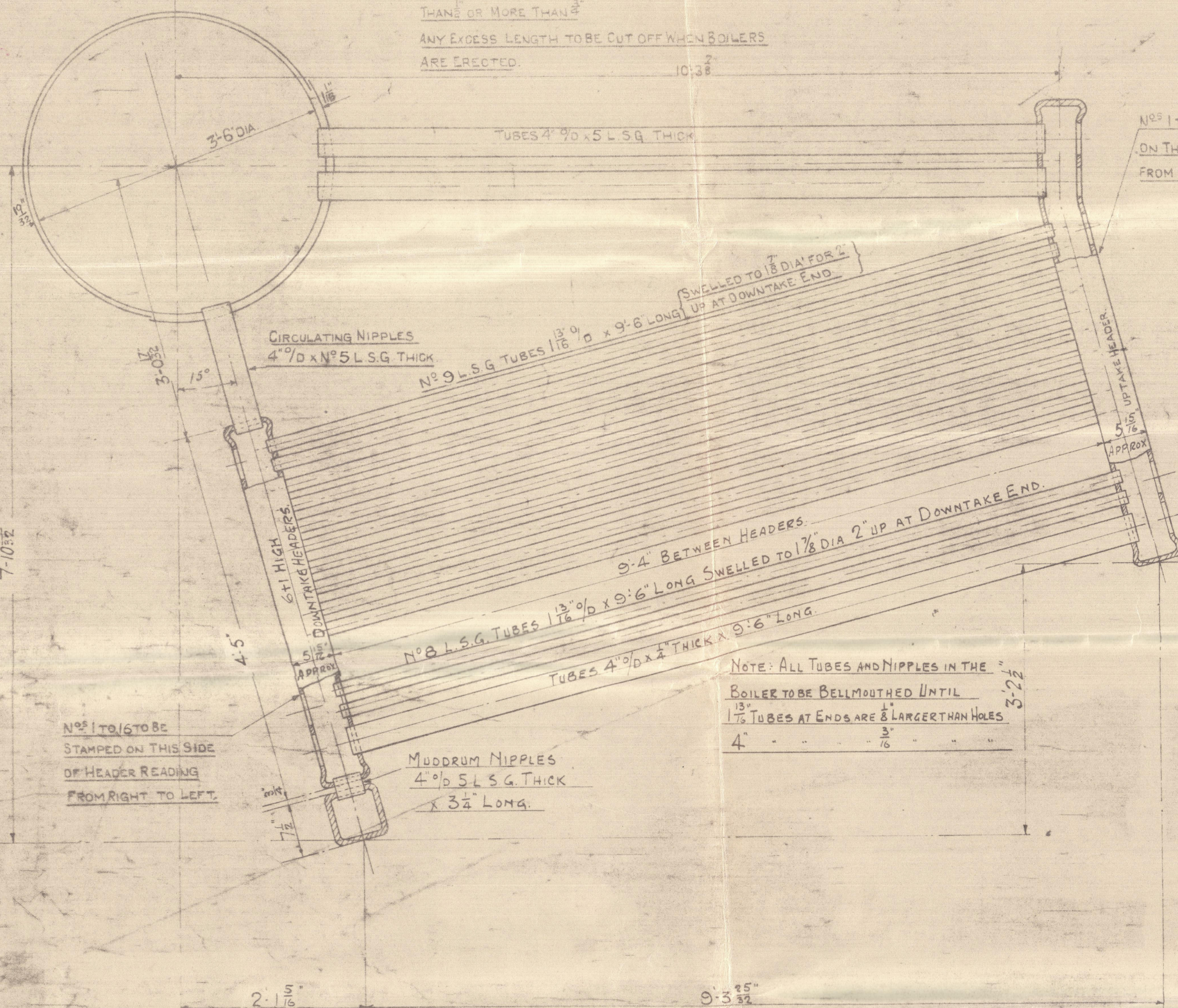
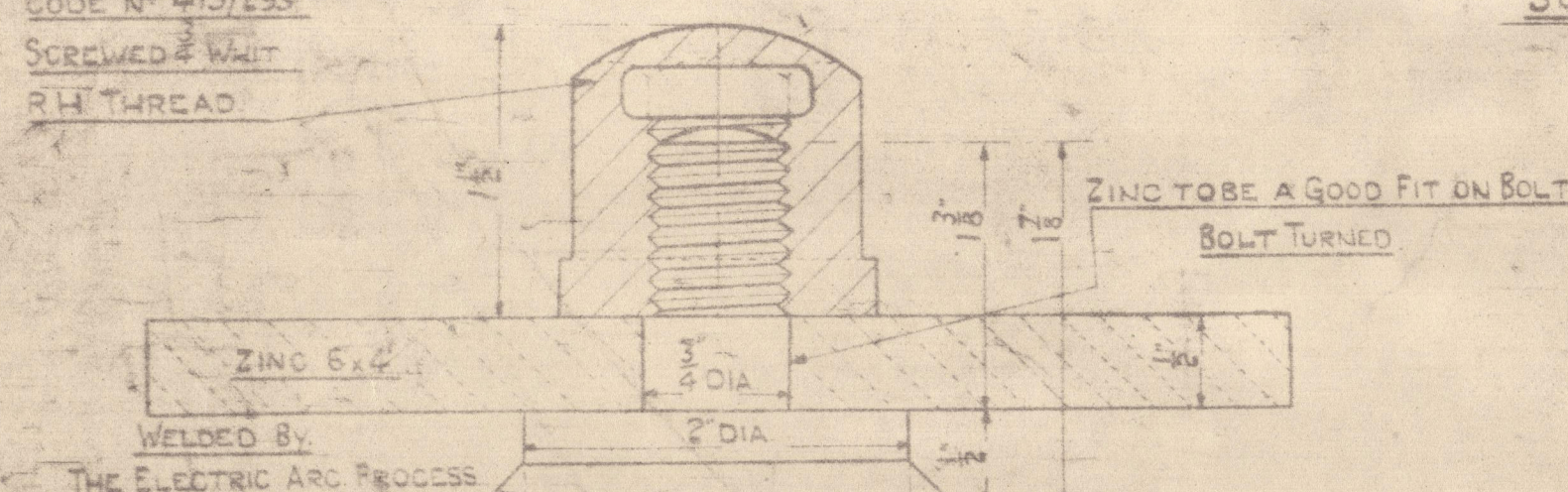


THE TOP RETURN TUBES ARE TO PROJECT BEYOND THE TUBE SEATS IN HEADERS 1, AND THRO' THE TUBE SEATS IN STEAM DRUM NOT LESS THAN OR MORE THAN 1/2" ANY EXCESS LENGTH TO BE CUT OFF WHEN BOILERS ARE ERECTED.

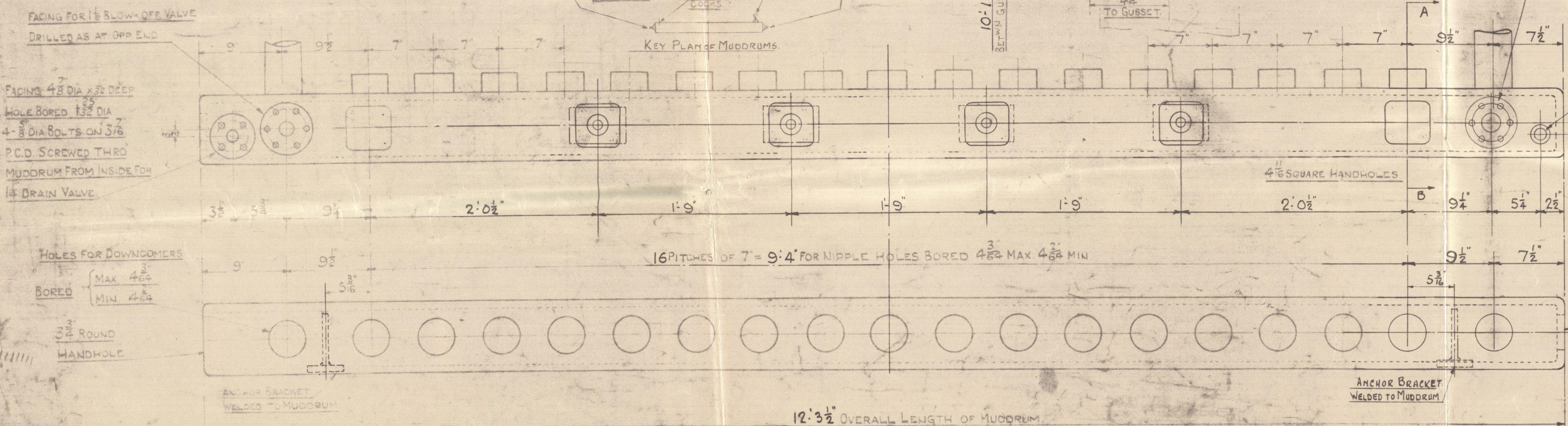
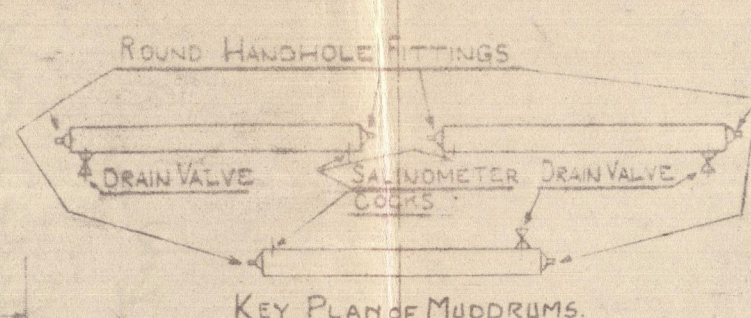


MALLEABLE CAST HEX CAP NUT TO SK 7/3282 A CODE N° 419/293 SCREWED W/ RHT THREAD



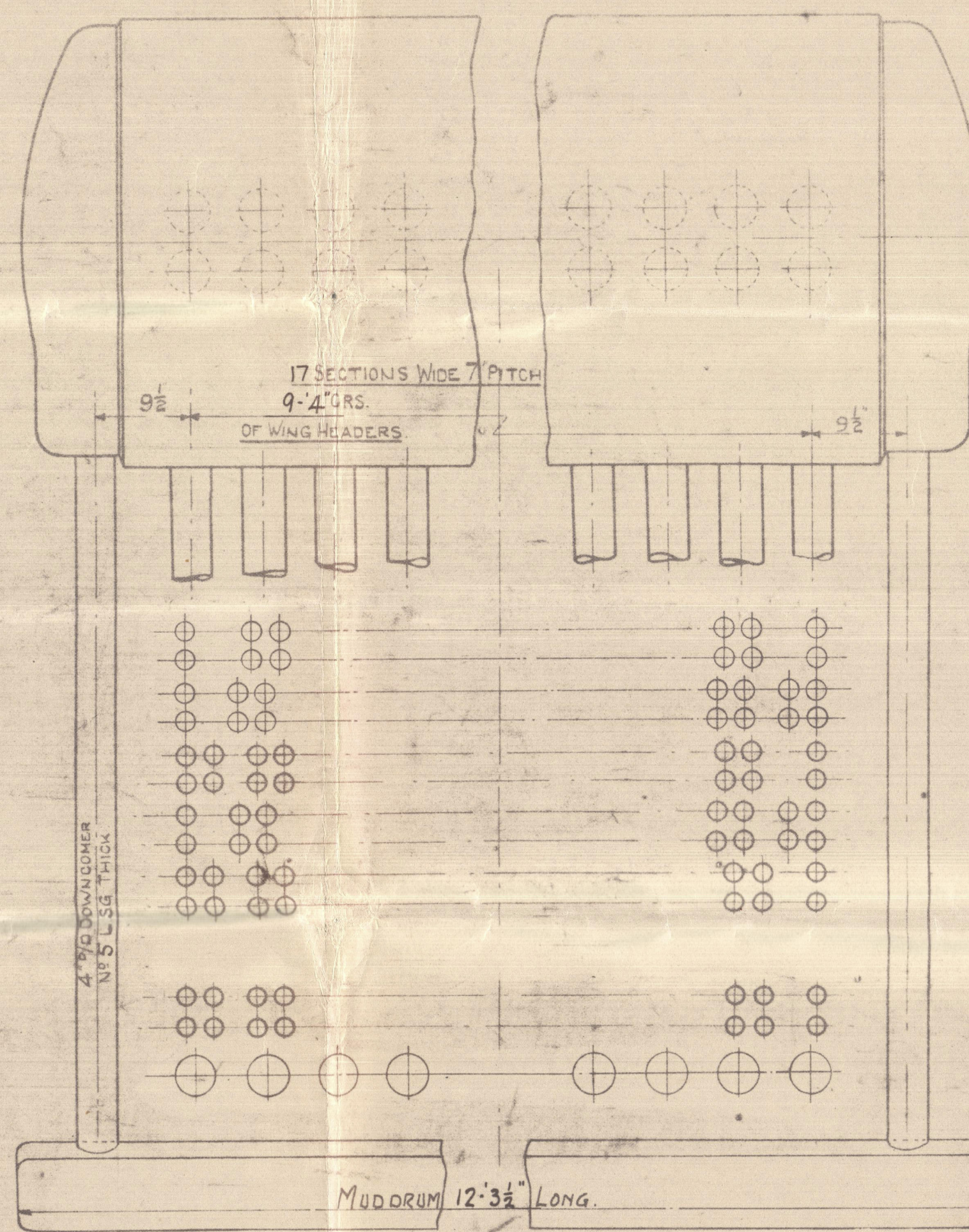
DETAIL OF ZINC HOLDERS IN MUDDRUM FULL SIZE

DETAIL OF MUDDRUM ANCHOR SCALE: 3" = ONE FOOT



DETAIL OF MUDDRUM SCALE: 1" = ONE FOOT

TWO OFF AS DRAWN ONE OFF TO OPP HAND (PER SHIP) SEE KEY PLAN

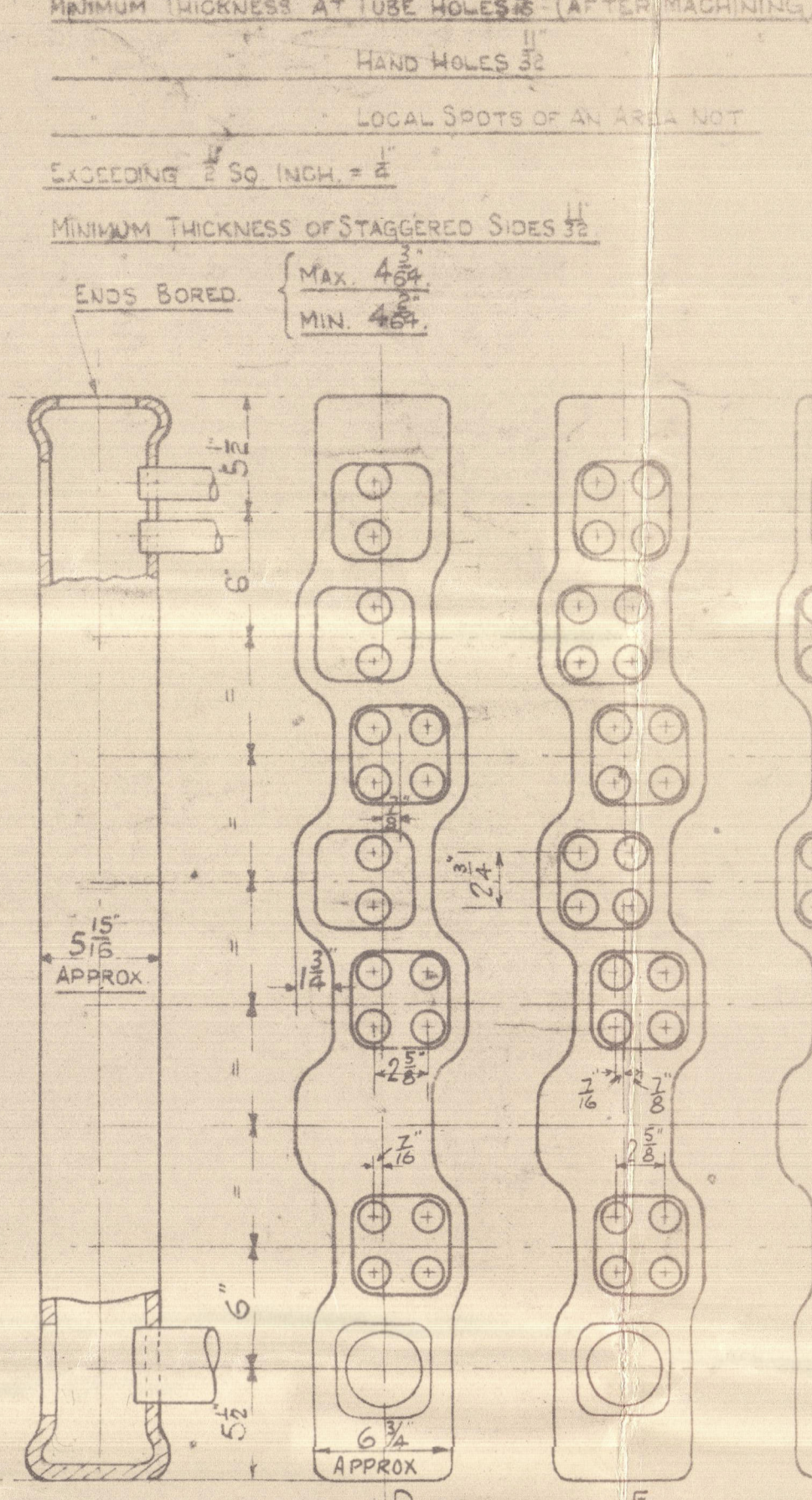


3- BOILERS PER SHIP - 2 SHIPS LIST OF MATERIAL REQUIRED FOR ONE BOILER

N° OFF	DESCRIPTION	QTY
1	STEAM & WATER DRUM TO DRG N° 6277/102	1
1	MUDDRUM SOLID DRAWN WELDLESS STEEL TO DETAIL	1
1	UPTAKE SIDE HEADER TYPE "A" TO DETAIL	1
15	CENTRE "D"	15
1	DOWNTAKE "C"	1
15	CENTRE "E"	15
1	DOWNTAKE "F"	1
17	INCLINED TUBES 4" 9/16" x 5" 5/8" THICK x 9'-6" LONG SWELLED AT ONE END TO 1 1/2" FOR 2" UP	17
66	RETURN TUBES 4" 9/16" x 5" 5/8" THICK x 8'-6" ORDERING LENGTH	66
17	CIRCULATING NIPPLES 4" 9/16" x 5" 5/8" THICK x 1'-5" LONG	17
17	MUDDRUM NIPPLES 4" 9/16" x 5" 5/8" THICK x 3" LONG	17
2	DOWNCOMER TUBES 4" 9/16" x 5" 5/8" THICK x 6'-0" ORDERING LENGTH	2
272	4 1/2" SQ HANDHOLE FITTINGS FOR HEADERS N° 89 CLAMP & 7758 JGGE	272
6	MUDDRUM N° 89	6
2	34 DIA HANDHOLE FITTINGS FOR N° 93 & 85A	2
4	ZINC & HOLDERS TO DETAIL	4
2	ANCHOR BRACKETS TO DETAIL WELDED TO MUDDRUM	2

NOTE: ALL TUBES TO BE HOT FINISHED SEAMLESS STEEL

MEASUREMENTS



DOWNTAKE HEADERS

UPTAKE HEADERS

DETAIL OF HEADERS

SEAMLESS MADE FROM WELDLESS STEEL BLANKS

SCALE 1 1/2" = 1 FOOT

D	DESCRIPTION	QTY
18	TUBE HOLES (MAX 1 1/2" MIN 1 1/8")	18
1	TUBE HOLE (MAX 4 1/2" MIN 4 1/8")	1
2	NIPPLE HOLES (MAX 4 1/2" MIN 4 1/8")	2
7	4 1/2" SQUARE HANDHOLES	7

E	DESCRIPTION	QTY
24	TUBE HOLES (MAX 1 1/2" MIN 1 1/8")	24
1	TUBE HOLE (MAX 4 1/2" MIN 4 1/8")	1
2	NIPPLE HOLES (MAX 4 1/2" MIN 4 1/8")	2
7	4 1/2" SQUARE HANDHOLES	7

A	DESCRIPTION	QTY
16	TUBE HOLES (MAX 1 1/2" MIN 1 1/8")	16
1	TUBE HOLE (MAX 4 1/2" MIN 4 1/8")	1
2	RETURN TUBE HOLES (MAX 4 1/2" MIN 4 1/8")	2
9	4 1/2" SQUARE HANDHOLES	9

B	DESCRIPTION	QTY
24	TUBE HOLES (MAX 1 1/2" MIN 1 1/8")	24
1	TUBE HOLE (MAX 4 1/2" MIN 4 1/8")	1
2	RETURN TUBE HOLES (MAX 4 1/2" MIN 4 1/8")	2
9	4 1/2" SQUARE HANDHOLES	9

F	DESCRIPTION	QTY
16	TUBE HOLES (MAX 1 1/2" MIN 1 1/8")	16
1	TUBE HOLE (MAX 4 1/2" MIN 4 1/8")	1
2	NIPPLE HOLES (MAX 4 1/2" MIN 4 1/8")	2
7	4 1/2" SQUARE HANDHOLES	7

C	DESCRIPTION	QTY
18	TUBE HOLES (MAX 1 1/2" MIN 1 1/8")	18
1	TUBE HOLE (MAX 4 1/2" MIN 4 1/8")	1
2	RETURN TUBE HOLES (MAX 4 1/2" MIN 4 1/8")	2
9	4 1/2" SQUARE HANDHOLES	9

LOAD ON BOILER SAFETY VALVE 250 LBS PER SQ INCH  
TEST PRESSURE 425 LBS PER SQ INCH  
TO LLOYD'S SURVEY & TO THE  
REQUIREMENTS OF AUSTRALIAN NAVIGATION ACT, ALSO LATEST  
REQUIREMENTS OF B.O.T. FOR CARGO VESSELS (NO PASSENGER CERTIFICATE)

# ARR<sup>GT</sup> OF PRESSURE PARTS & DETAILS OF HEADERS & MUDDRUMS ETC.

SCALES AS MARKED

BABCOCK & WILCOX LIMITED  
PENFREW

This Design is the property of Babcock & Wilcox Limited and is only allowed to be used by express permission and license from Babcock & Wilcox Limited

DRAWN BY  
TRACED BY  
CHECKED BY  
PASSED BY

6/1320 & 6/1321  
DRG. N° 6277/101  
DATE

© 2021  
Lloyd's Register  
Foundation



Glasgow

4

Messrs Babcock & Wilcox  
Boilers No 6/1320 and 6/1321

Intended for Messrs Lidgett  
Ships No 902 - 903

Arrang<sup>t</sup> of pressure parts,  
& details of headers, mud drums etc

Drawing No 6277/101.

"Iron Chieftain" Grk. 20479.  
GLASGOW REPORT No 59185

W181-0049



© 2021

Lloyd's Register  
Foundation