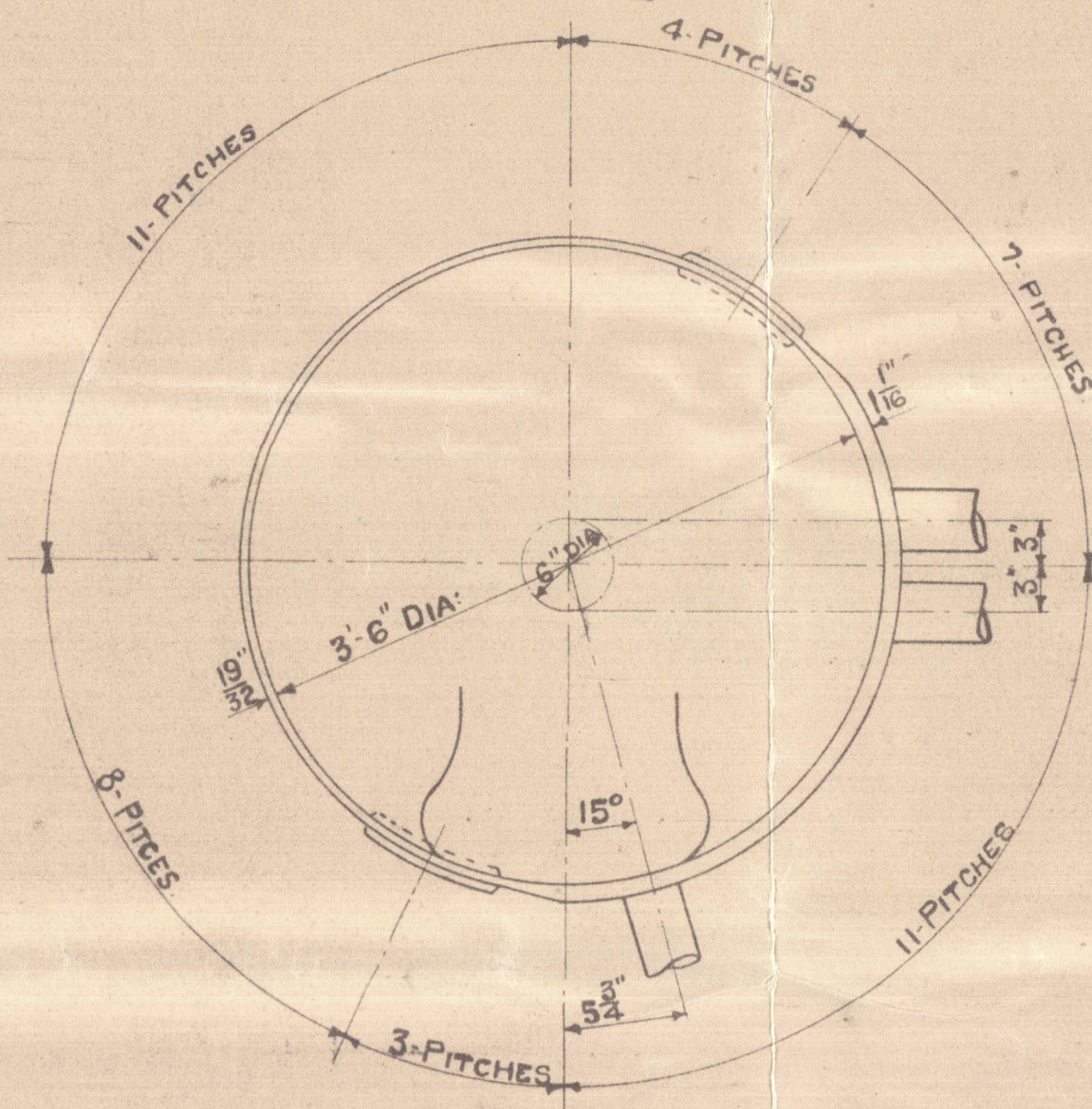


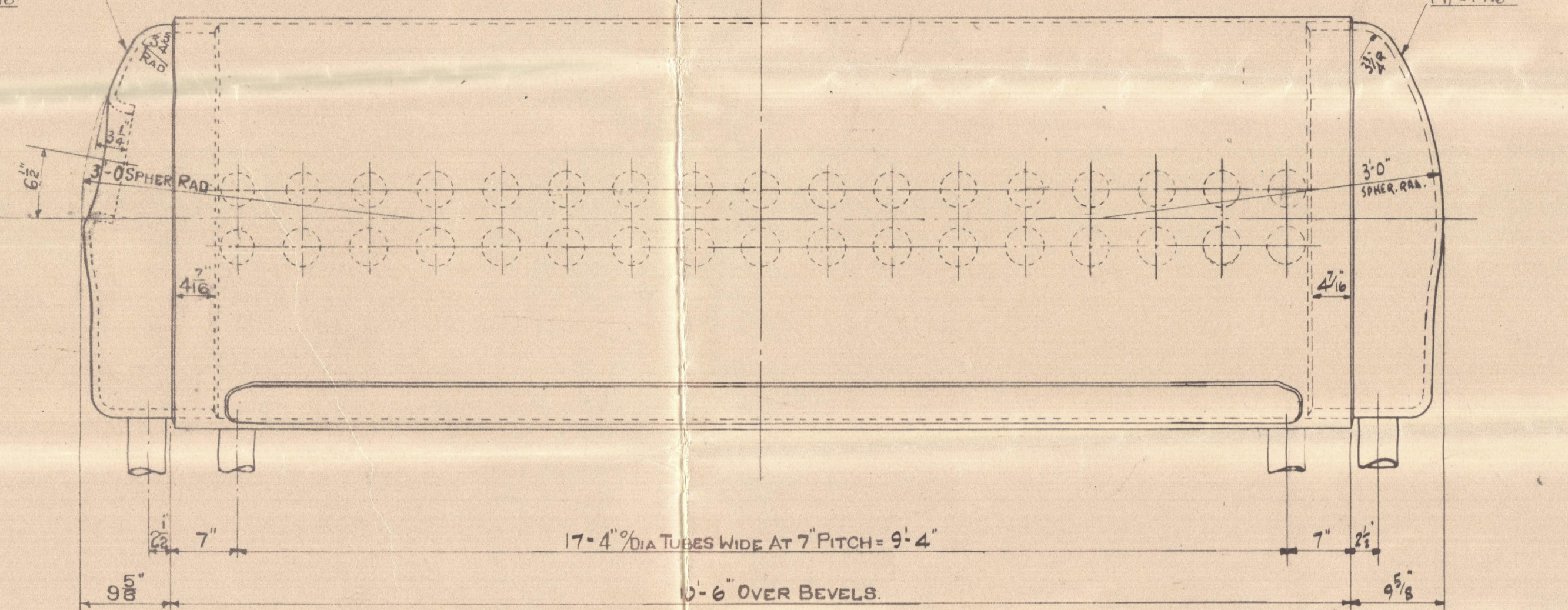


FRONT OF BOILER

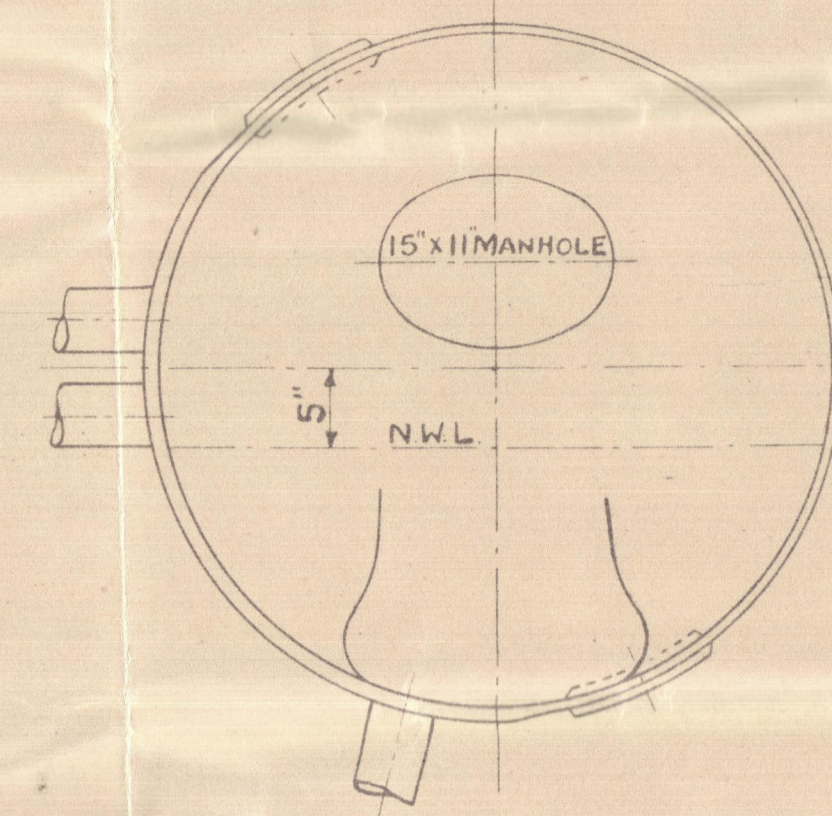


R.H. DRUMHEAD.

MADE FROM 15 TK PLATE
M₁ = 14 1/16

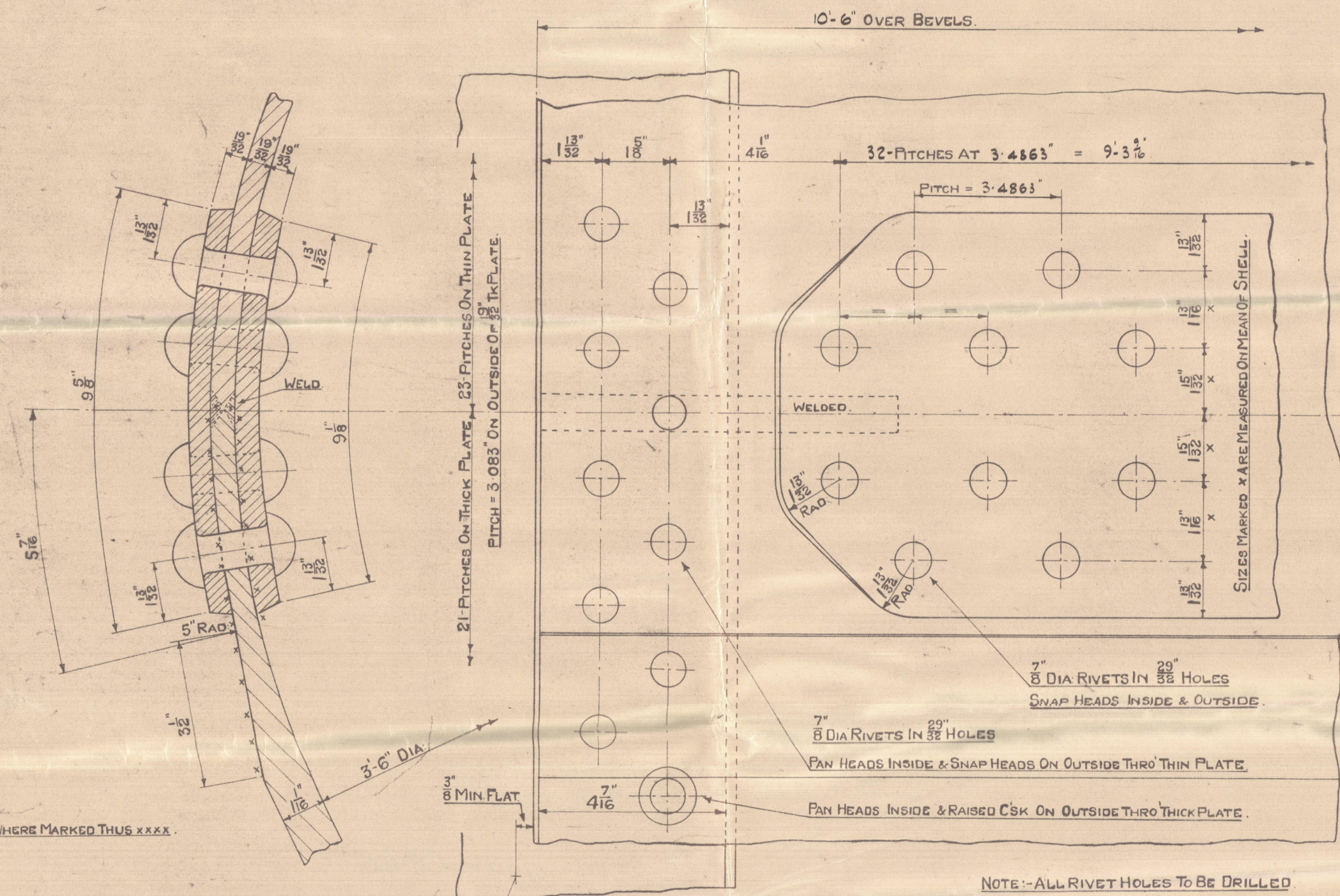


VIEW LOOKING ON FRONT OF BOILER.



L.H. DRUMHEAD.

NOTE: CIRCUMFERENTIAL SIZES ARE MEASURED ON OUTSIDE OF SHELL.



NOTE: ALL RIVET HOLES TO BE DRILLED

THIS DRAWING NOT ALTERED				
FROM	TO	DATE	ON ACCOUNT OF	INITIALS

RIVETING DIAGRAM.

LONGITUDINAL JOINT :- PLATE % = 74.06 RIVET % = 91.79

CIRCUMFERENTIAL JOINT :- " = 70.20 " = 56.14

TENSILE STRENGTH OF SHELL PLATES & BUTTSTRAPS = 28-32 TONS / sq"

" " DRUMHEAD PLATES = 26-30 TONS / sq"

SHELL PLATES ELONGATION EQUAL TO NOT LESS THAN 20% IN 8"

DRUMHEAD PLATES " " " " 23% IN 8"

SIEMENS MARTIN MILD STEEL

DETAIL OF 3'-6" DIA STEAM & WATER DRUM FOR MARINE BOILER

17-SECTIONS WIDE 6+1 HIGH 4"/DIA TUBES 9'-6" LONG

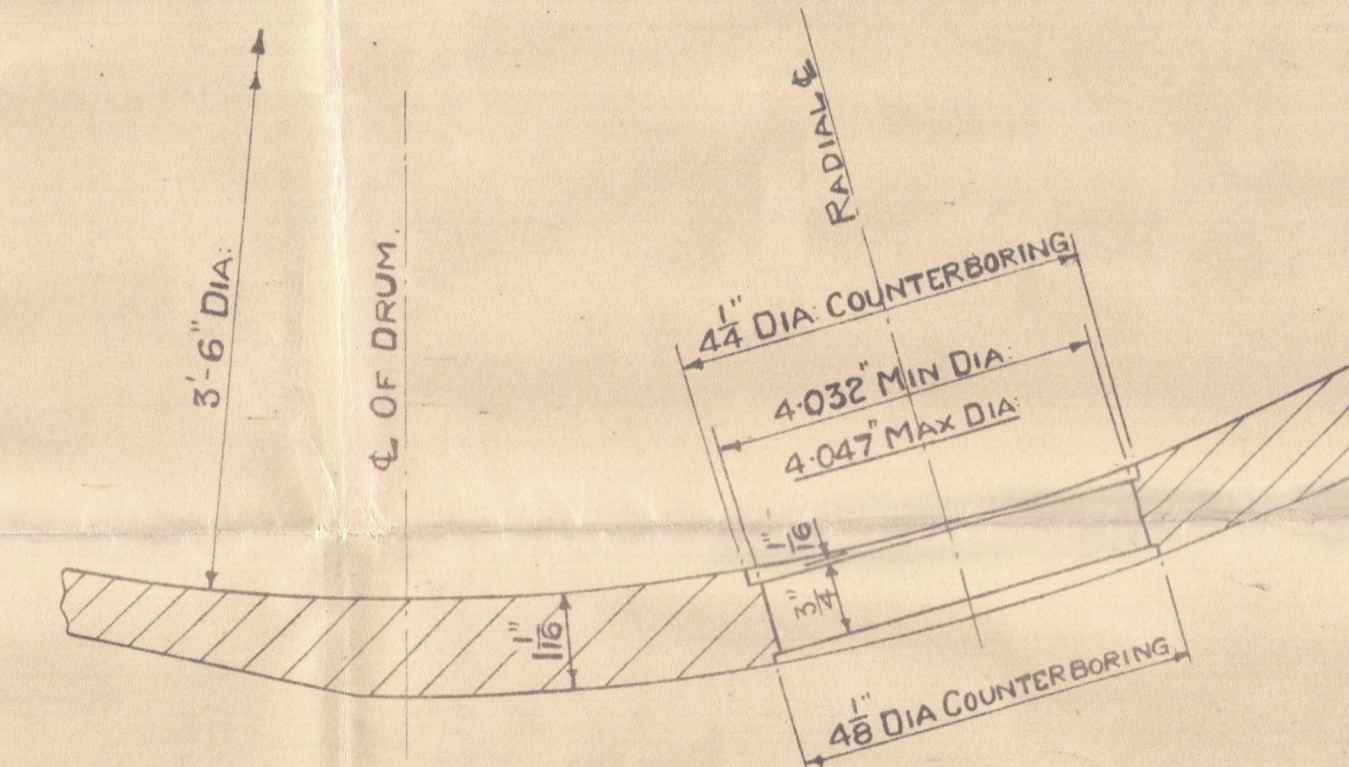
HEATING SURFACE = 2204 SQ FT

3-BOILERS IN CONTRACT 6/1320 (2-OFF AS DRAWN & 1-OFF TO OPP HAND)

3-BOILERS IN CONTRACT 6/1321 (2-OFF AS DRAWN & 1-OFF TO OPP HAND)

SCALES :- 1'-1 FOOT & HALF FULL SIZE

APPROXIMATE WEIGHT OF 1-DRUM = 2 TONS 18 1/2 CWTs.



DETAIL OF COUNTERBORING FOR 4"/DIA DOWNTAKE TUBES.

LIST OF MATERIAL FOR 6-DRUMS (ORDERED SIZES)	
Nº OFF	DESCRIPTION
6	M.S. TUBE PLATES 10'-6 3/4" x 65 3/4" x 1 1/8" TK.
6	M.S. SHELL PLATES 10'-6 7/8" x 70 3/4" x 3/8" TK.
6	M.S. BUTT PLATES 9'-1 1/4" x 43" x 3/8" TK. (EACH CUT INTO 2-INNER & 2-OUTER STRAPS)
12	M.S. DRUMHEAD PLATES 4'-10" SQ x 1 1/8" TK.

This Design is the property of Babcock & Wilcox Limited and is only allowed to be used by express permission and license from Babcock & Wilcox Limited

LIST OF REFERENCE DRGS & SKETCHES

FOR LATEST AFFIX ON DRGS & SKETCHES SEE SHOP ORDERS

DESCRIPTION	Nº
M.S. PADS & NOZZLES ON DRUM	
INTERNAL FITTINGS	
DRUM ANGLES	

Handwritten signature and date: 2/12/36

DRAWN BY	
TRACED BY	
CHECKED BY	
PASSED BY	

6/1320-21
DRC Nº 6277/102

BABCOCK & WILCOX LTD
RENFREW



© 2021
Lloyd's Register
Foundation

W181-0046

W181-0046

Babcock & Wilcox

Boilers no 6/1320 16/1321.

La B Rowan 1007/8.

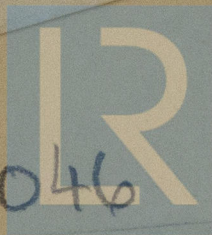
Mth Lithgows 902/3.

Shear & Water Brans.

Drawings No 6277/102.

"Iron Chieftain" 922.20479.
GLASGOW REPORT No 59185

W181-0046



© 2021

Lloyd's Register
Foundation