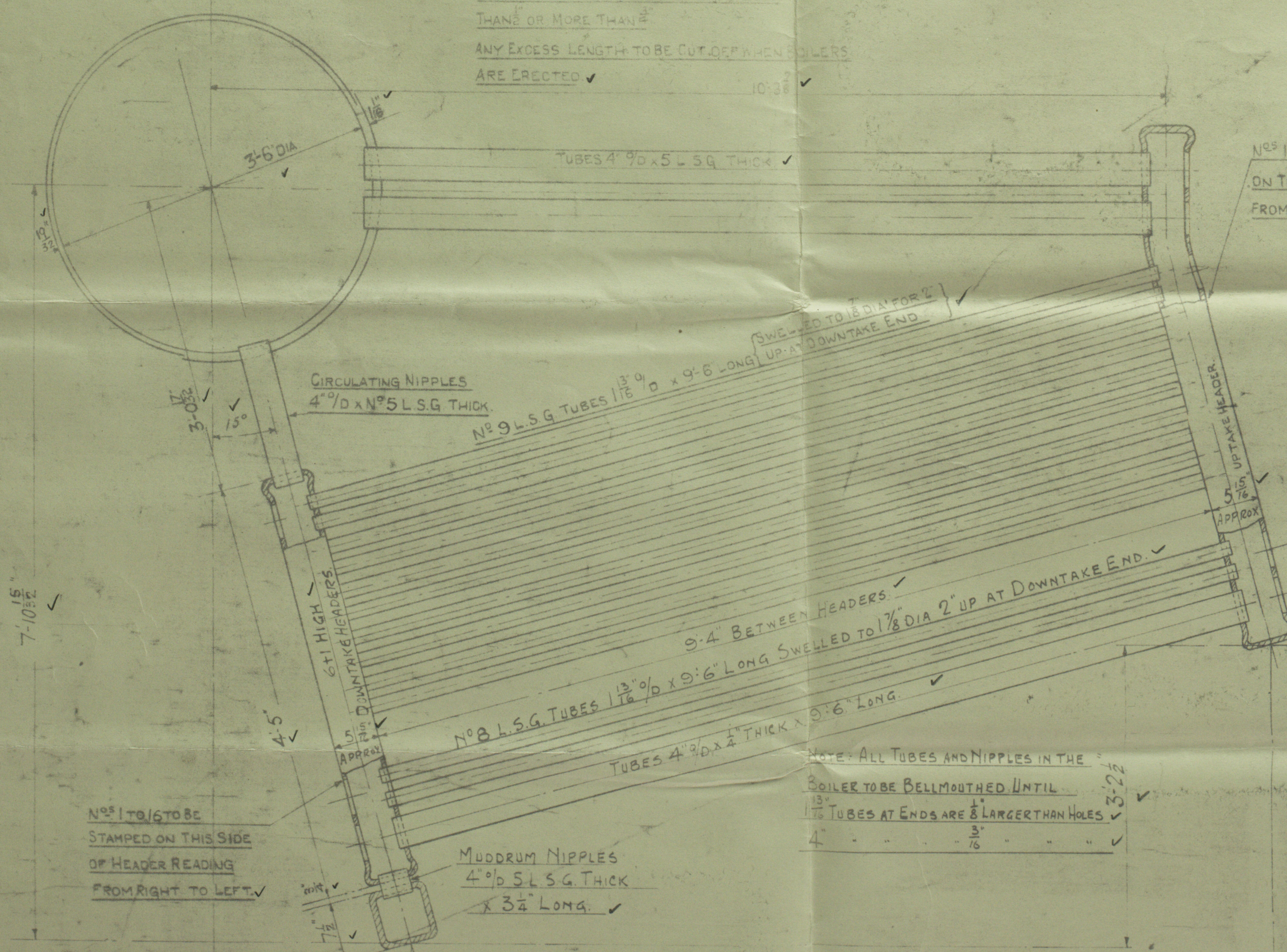
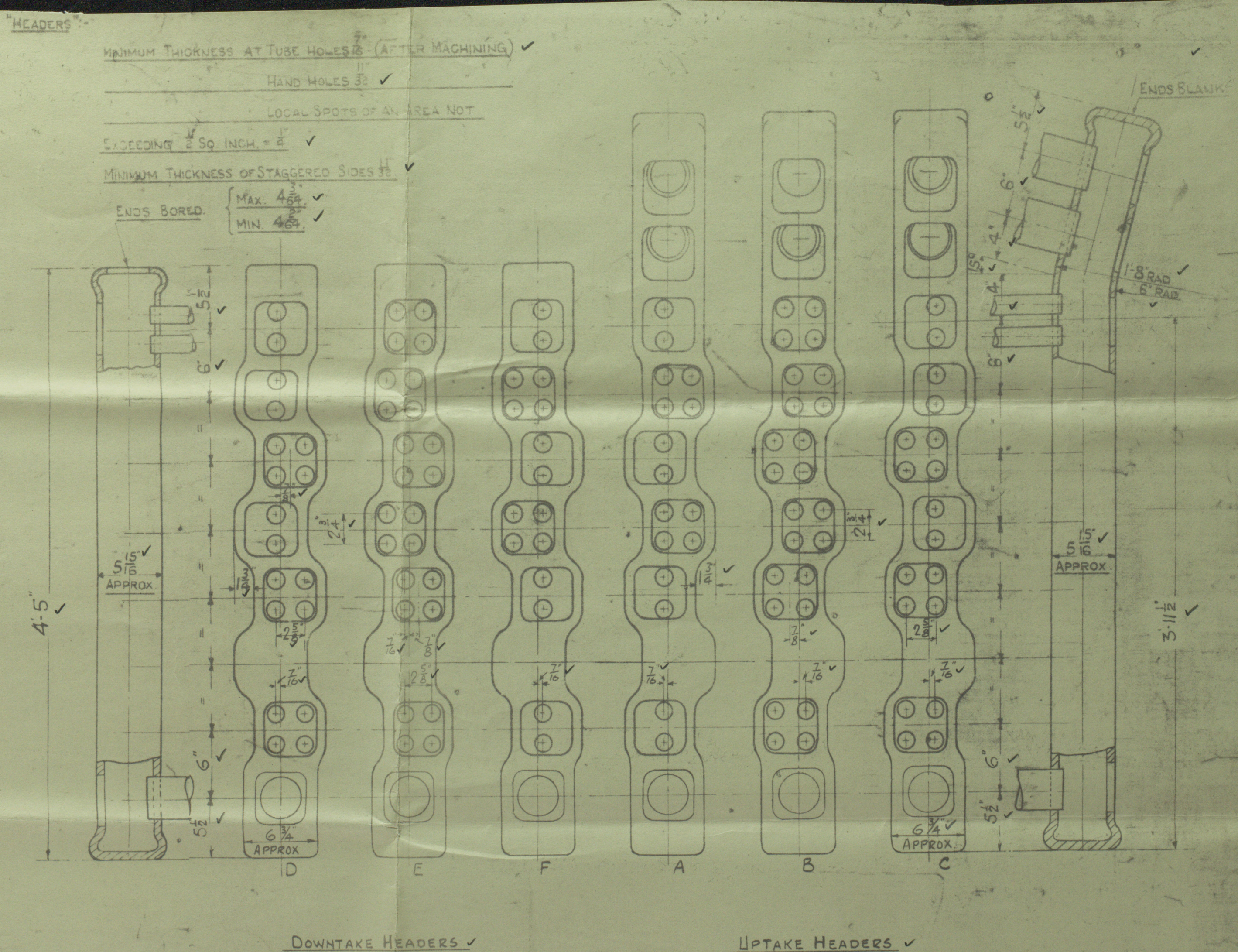
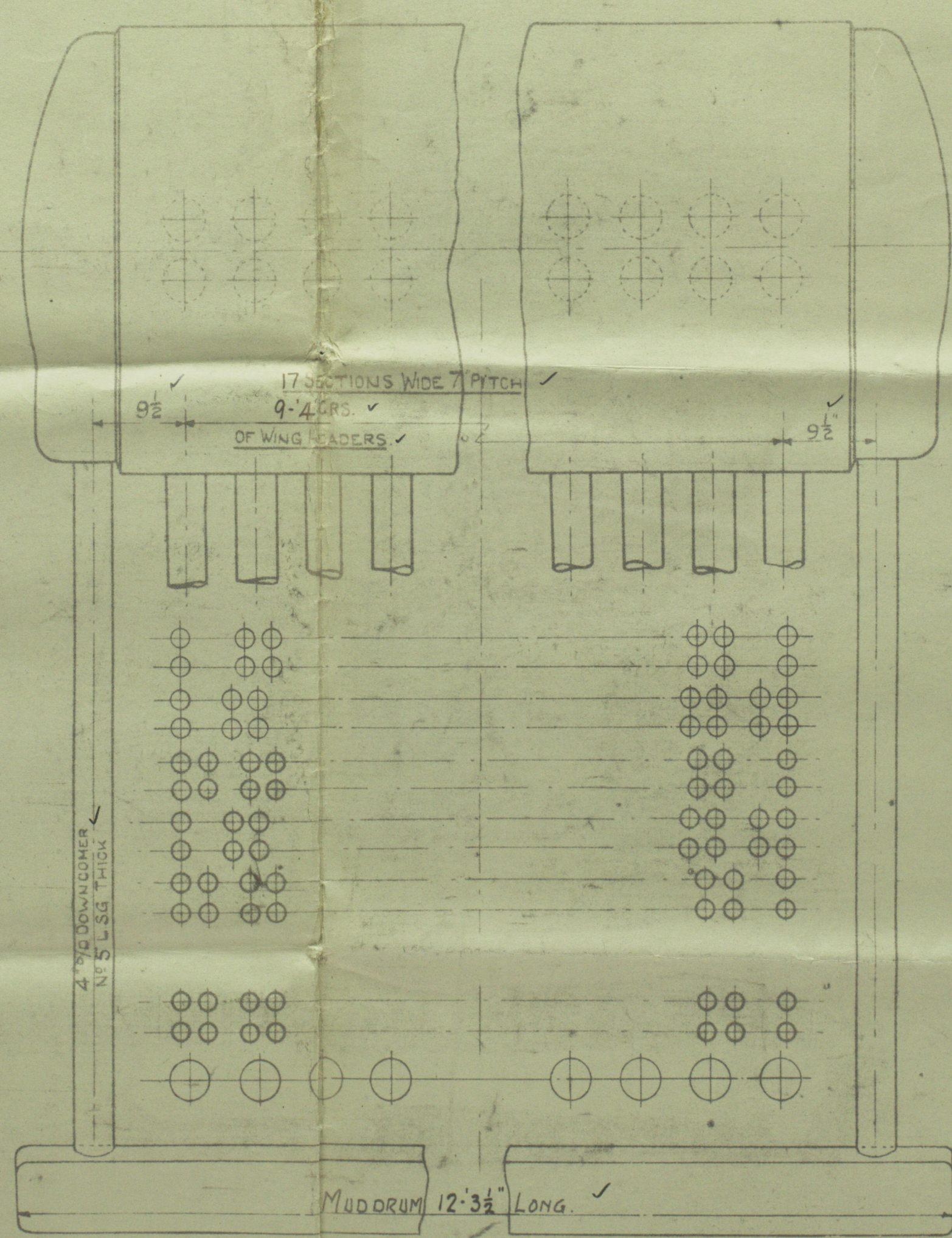


THE TOP RETURN TUBES ARE TO BE STAMPED ON THE TUBE SEATS IN HEADERS 1, AND THE TUBE SEATS IN STEAM DRUM NIPPLES, THAN OR MORE THAN 1/8 IN. ANY EXCESS LENGTH TO BE CUT OFF WHEN BOLTERS ARE ERECTED.

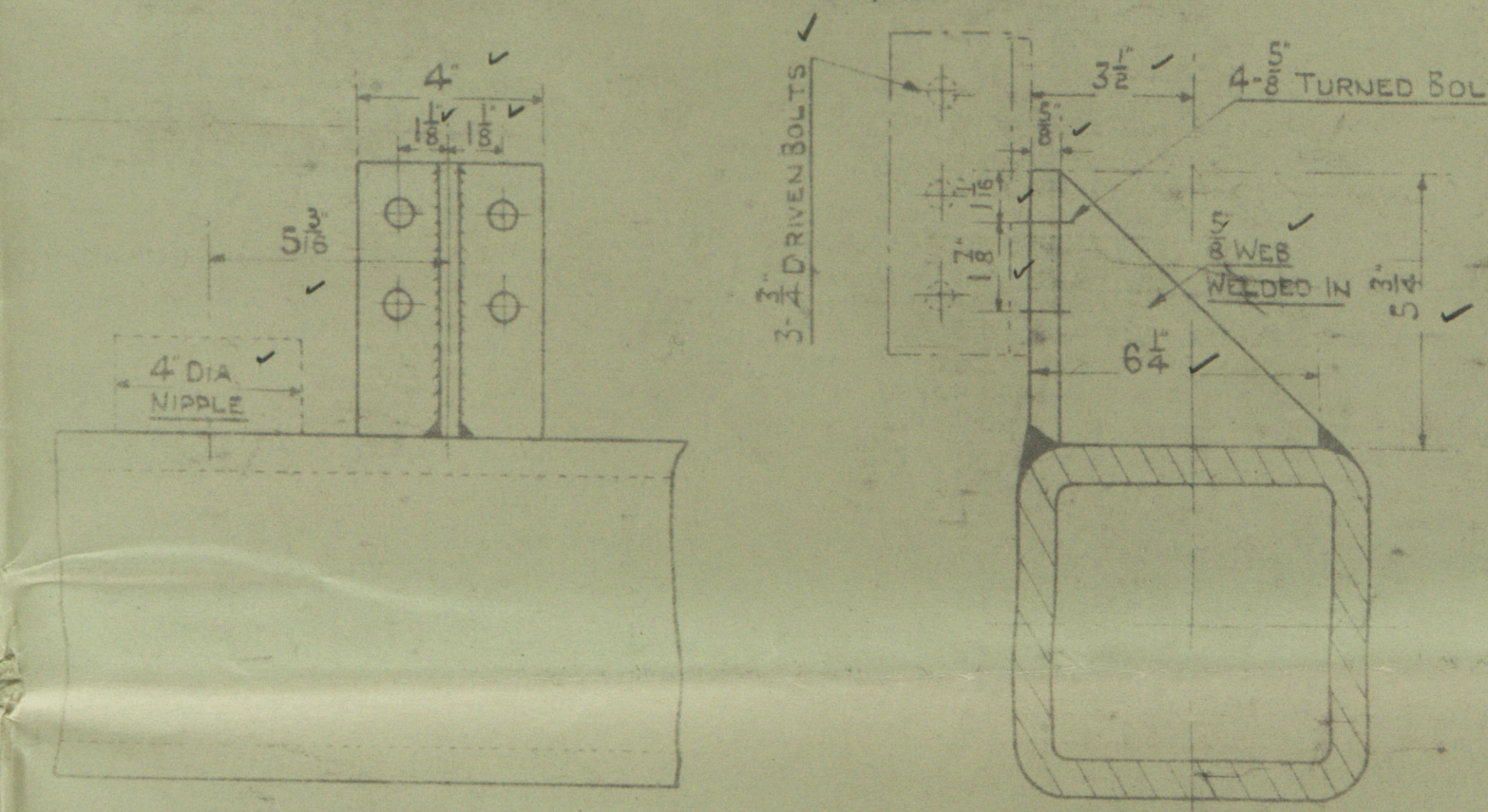
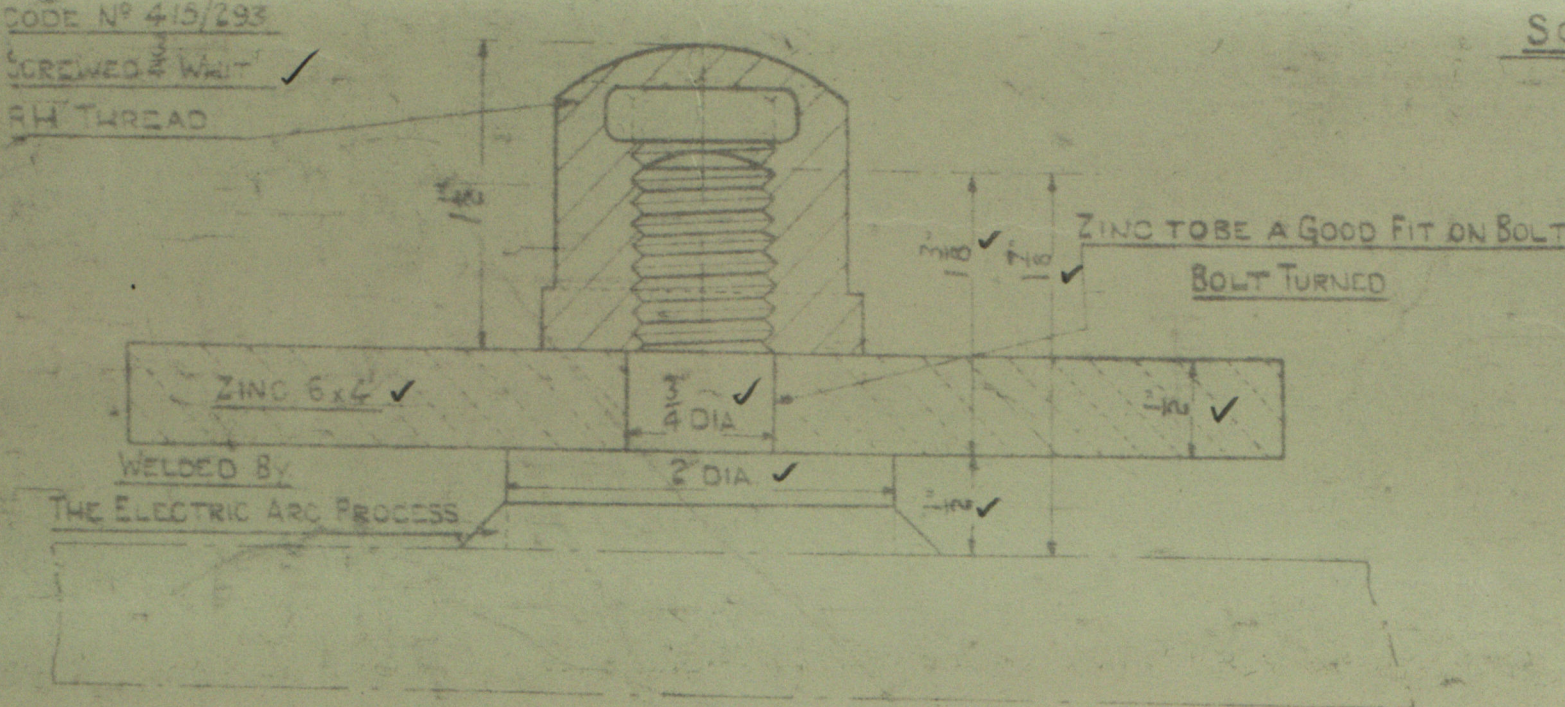


Nº 1 TO 6 TO BE STAMPED ON THIS SIDE READING FROM LEFT TO RIGHT.



DETAIL OF HEADERS
SEAMLESS MADE FROM WELDLESS STEEL BLANKS
SCALE 1 1/2" = 1 FOOT

ARRANGEMENT OF PRESSURE PARTS 17 SECTIONS WIDE
SCALE - 1" = ONE FOOT



3- BOILERS PER SHIP - 2 SHIPS.
LIST OF MATERIAL REQUIRED FOR ONE BOILER

NO OFF	DESCRIPTION	QUANTITY
1	STEAM & WATER DRUM TO DRG Nº 6277/102	1
1	MUDDRUM SOLID DRAWN WELDLESS STEEL TO DETAIL	1
1	UPTAKE SIDE HEADER TYPE "A" TO DETAIL	1
15	CENTRE "B"	15
1	SIDE "C"	1
1	DOWNTAKE "D"	1
15	CENTRE "E"	15
1	SIDE "F"	1
17	INCLINED TUBES 4" Ø x 4" THICK x 9'6" LONG	17
66	1 1/2" Ø x 8 LSG x 9'6" LONG	66
328	1 1/2" Ø x 9 LSG x 9'6" LONG	328
34	RETURN TUBES 4" Ø x 5 LSG x 8'6" ORDERING LENGTH	34
17	CIRCULATING NIPPLES 4" Ø x 5 LSG x 1'5" LONG	17
17	MUDDRUM NIPPLES 4" Ø x 5 LSG x 3'6" LONG	17
2	DOWNTAKE TUBES 4" Ø x 15 LSG x 6'0" ORDERING LENGTH	2
272	4 1/2" SQ HANDHOLE FITTINGS FOR HEADERS Nº 89 CLAMP & 778 EDGE	272
6	1 1/2" DIA HANDHOLE FITTINGS FOR Nº 93	6
2	ZINCS & HOLDERS TO DETAIL	2
4	ANCHOR BRACKETS TO DETAIL WELDED TO MUDDRUM	4
2	ANCHOR BRACKETS TO DETAIL WELDED TO MUDDRUM	2

NOTE: ALL TUBES TO BE HOT FINISHED SEAMLESS STEEL.

D		E		A		B	
18	TUBE HOLES MAX 1 1/2" MIN 1 1/8" ✓	24	TUBE HOLES MAX 1 1/2" MIN 1 1/8" ✓	16	TUBE HOLES MAX 1 1/2" MIN 1 1/8" ✓	24	TUBE HOLES MAX 1 1/2" MIN 1 1/8" ✓
1	TUBE HOLE MIN 4" ✓	1	TUBE HOLE MIN 4" ✓	1	TUBE HOLE MIN 4" ✓	1	TUBE HOLE MIN 4" ✓
2	NIPPLE HOLES MAX 4" MIN 4" ✓	2	NIPPLE HOLES MAX 4" MIN 4" ✓	2	RETURN TUBE HOLES MAX 4" MIN 4" ✓	2	RETURN TUBE HOLES MAX 4" MIN 4" ✓
7	4 1/2" SQUARE HANDHOLES ✓	7	4 1/2" SQUARE HANDHOLES ✓	9	4 1/2" SQUARE HANDHOLES ✓	9	4 1/2" SQUARE HANDHOLES ✓

F		C	
16	TUBE HOLES MAX 1 1/2" MIN 1 1/8" ✓	18	TUBE HOLES MAX 1 1/2" MIN 1 1/8" ✓
1	TUBE HOLE MIN 4" ✓	1	TUBE HOLE MIN 4" ✓
2	NIPPLE HOLES MAX 4" MIN 4" ✓	2	RETURN TUBE HOLES MAX 4" MIN 4" ✓
7	4 1/2" SQUARE HANDHOLES ✓	9	4 1/2" SQUARE HANDHOLES ✓

LOAD ON BOILER SAFETY VALVE 250 LBS PER SQ INCH ✓
TEST PRESSURE 425 LBS PER SQ INCH ✓
TO LLOYD'S SURVEY & TO THE
REQUIREMENTS OF AUSTRALIAN NAVIGATION ACT, ALSO LATEST
REQUIREMENTS OF BOT FOR CARGO VESSELS (NO PASSENGER CERTIFICATE)

ARR⁴ OF PRESSURE PARTS & DETAILS
OF HEADERS & MUDDRUMS ETC.
SCALES AS MARKED

BABCOCK & WILCOX LIMITED
RENEW

This Design is the property of Babcock & Wilcox Limited and is only allowed to be used by express permission and license from Babcock & Wilcox Limited.

DRAWN BY
TRACED BY
CHECKED BY
PASSED BY

6/1320 & 6/1321
DRG Nº 6277/101
DATE

W80-0258 LLOYD'S R


Slanyon

Messrs Babcock & Wilcox

Borders No 6/1320 & 6/1321.

Intended for mess-hitchgows

Shells No 902-903.

Sp. Iron Knight  Gpk 20447.

Iron Chieftain

Arrang^t of pressure parts,

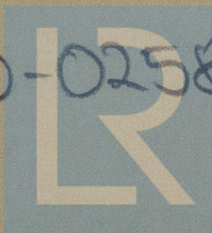
& details of headers, mud drum

etc

7

108

W180-0258



© 2019

Lloyd's Register
Foundation