

MATERIAL

ALL PLATES OF SIEMENS MARTIN STEEL

TUBES AND STAY NUTS IRON

ALL RIVETS STEEL

LONGITUDINAL STAYS STEEL

BOX STAYS TESTED IRON.

SHELL BUTT STRAPS GIRDERS 28-32 TONS TENSILE STRENGTH

FURNACES COMPENSATING RING 26-30 " " "

ALL OTHER PLATES 26-30 " " "

LONGITUDINAL STAYS 28-32 " " "

BOX STAYS (TESTED IRON) NOT LESS THAN 21 1/2 " " "

PERCENTAGES LLOYDS.

PLATE SECTION	86 %
RIVET	85.7%

SHELL PLATES. 1 1/4

INNER BUTT STRAPS. 1 1/4

OUTER " 1 1/4

SHELL RIVET HOLES. 1 3/8

WORKING PRESS. 185

TEST. = 327.5

HEATING SURFACE

SURFACE IN TUBES	1733.7 sq. ft.
" " FURNACES	151.5 "
" " BOX BACKS	77.62 "
" " SIDES	153 "
" " BOX TUBE PLATES	47 "

TOTAL SURFACE IN ONE BOILER 2162.82 sq. ft.

" " TWO " 4325.64 "

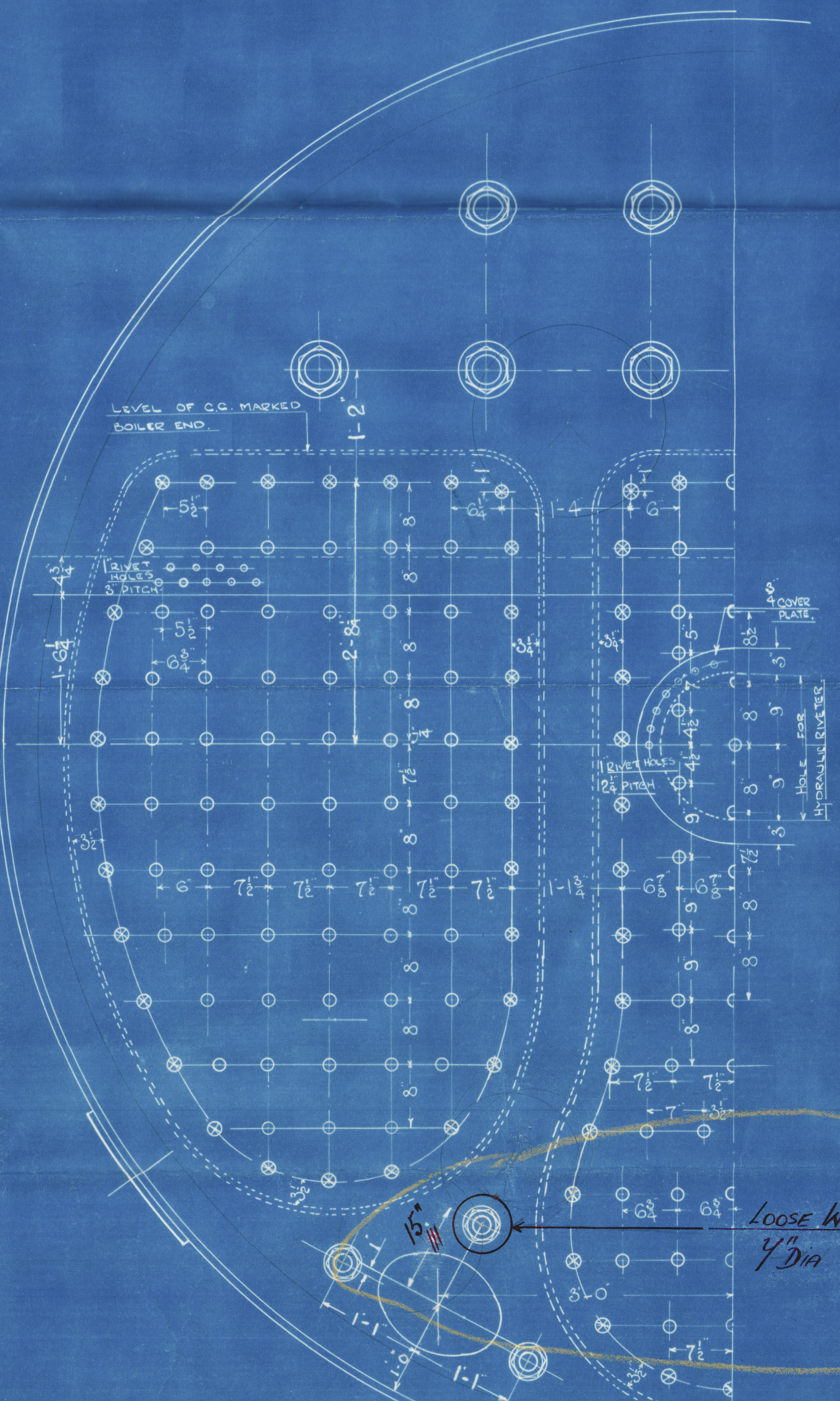
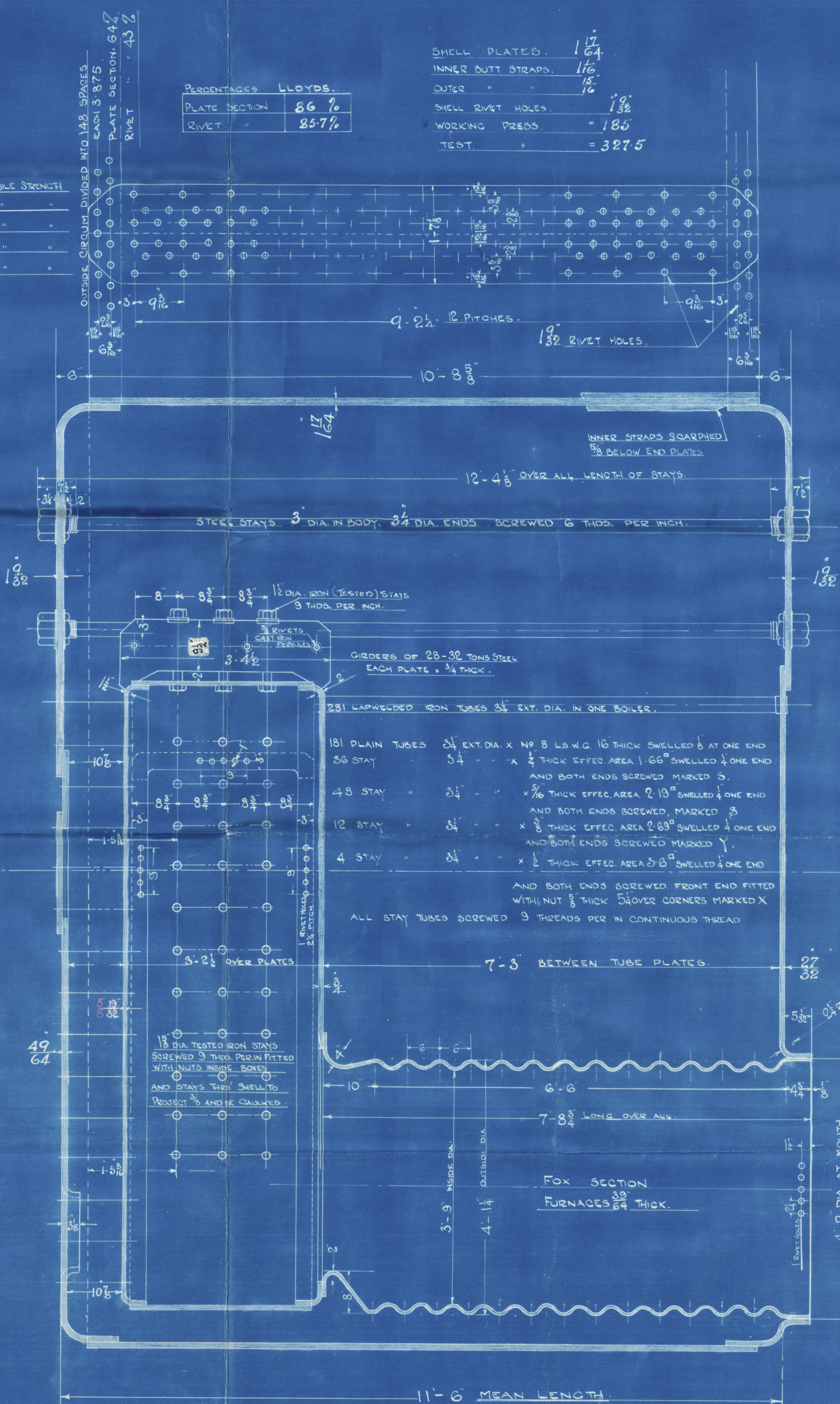
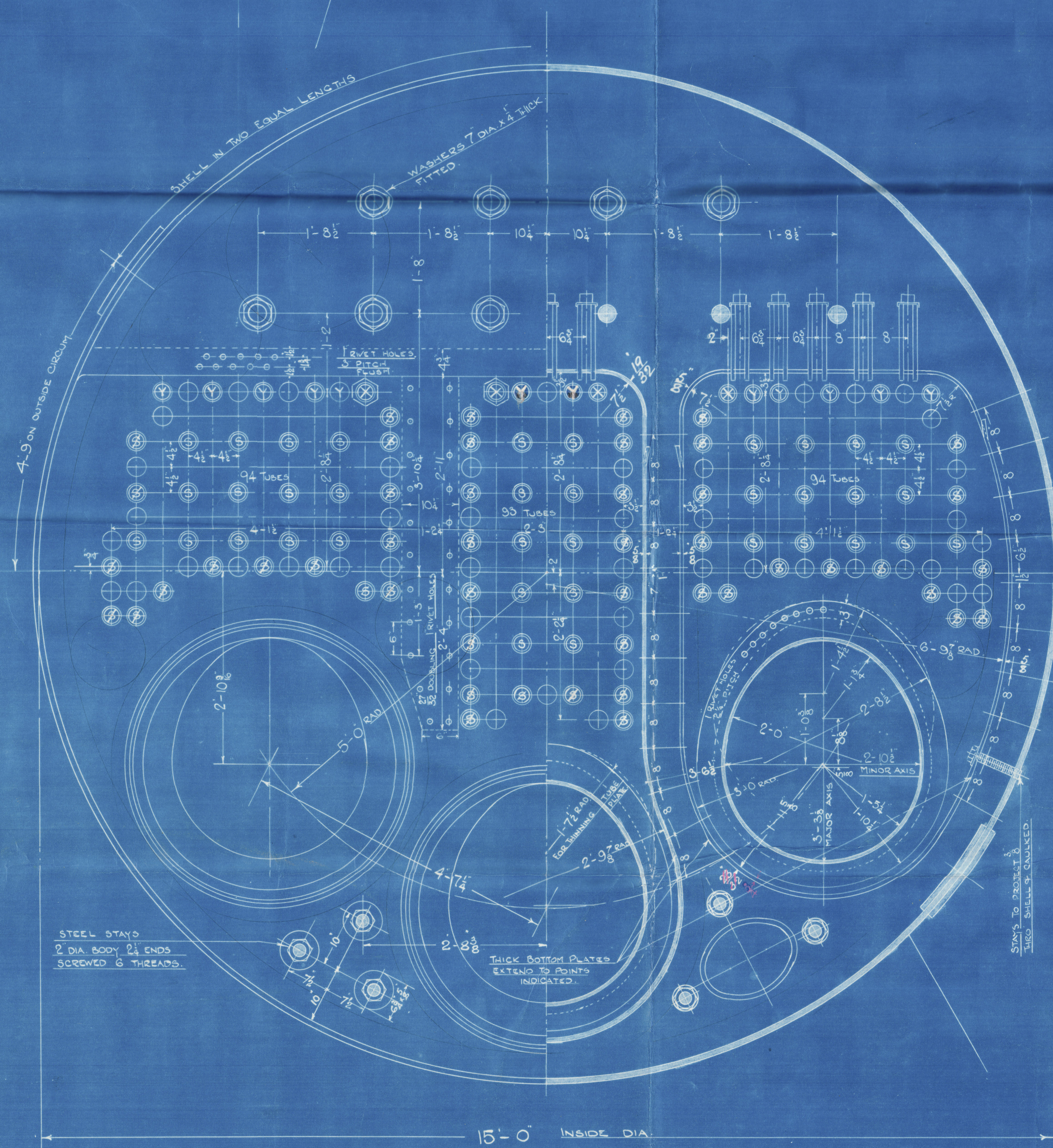
* GRATE SURFACE * ONE 53 1/8

" " TWO 118

FIREBARS 5-5 LONG WITH GROOVE ON TOP

ONE PAIR OF SAFETY VALVES 3/4 DIA.

CLEAR AREA THRO TUBES 12.4 sq. ft.



BOX STAYS SREWED SQUARE INTO BOX BACKS

CORNER STAYS MARKED X AGE 2 DIA

MARGINAL " " X " 1 3/8 "

OTHER " " O " 1 1/2 "

ALL SREWED 3 THDS PER IN TESTED IRON

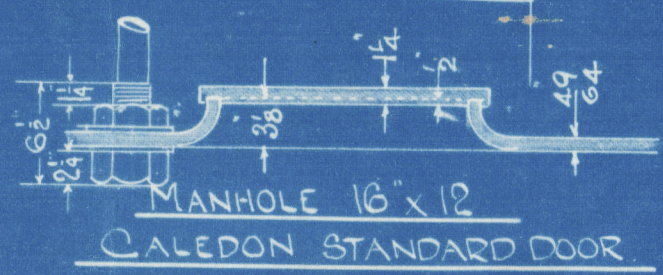
NUTS ON BOTH ENDS MARGINAL STAYS

THE OTHERS NUTTED INSIDE BOXES AND

RIVETED OUTSIDE END PLATES

NO WASHERS FITTED INSIDE BOXES WHERE

IT CAN BE AVOIDED.



BOILERS No 498

WORKING PRESS 185 LBS TO PASS LLOYDS SURVEY

scale 1" = 1 foot

B. A. 498

22nd June 1925



- Caledon S. & S. Boys' N^o 98. -

2 Single-ended Boilers W.P. 185 lbs.

Sl. "Cloulara"

Dun. 8562.

N^o 1007

LLOYDS TEST

330 LBS

W.P. 185 LBS

J.E.S. 27-1-26



© 2020

W18 - 0013 Lloyd's Register
Foundation