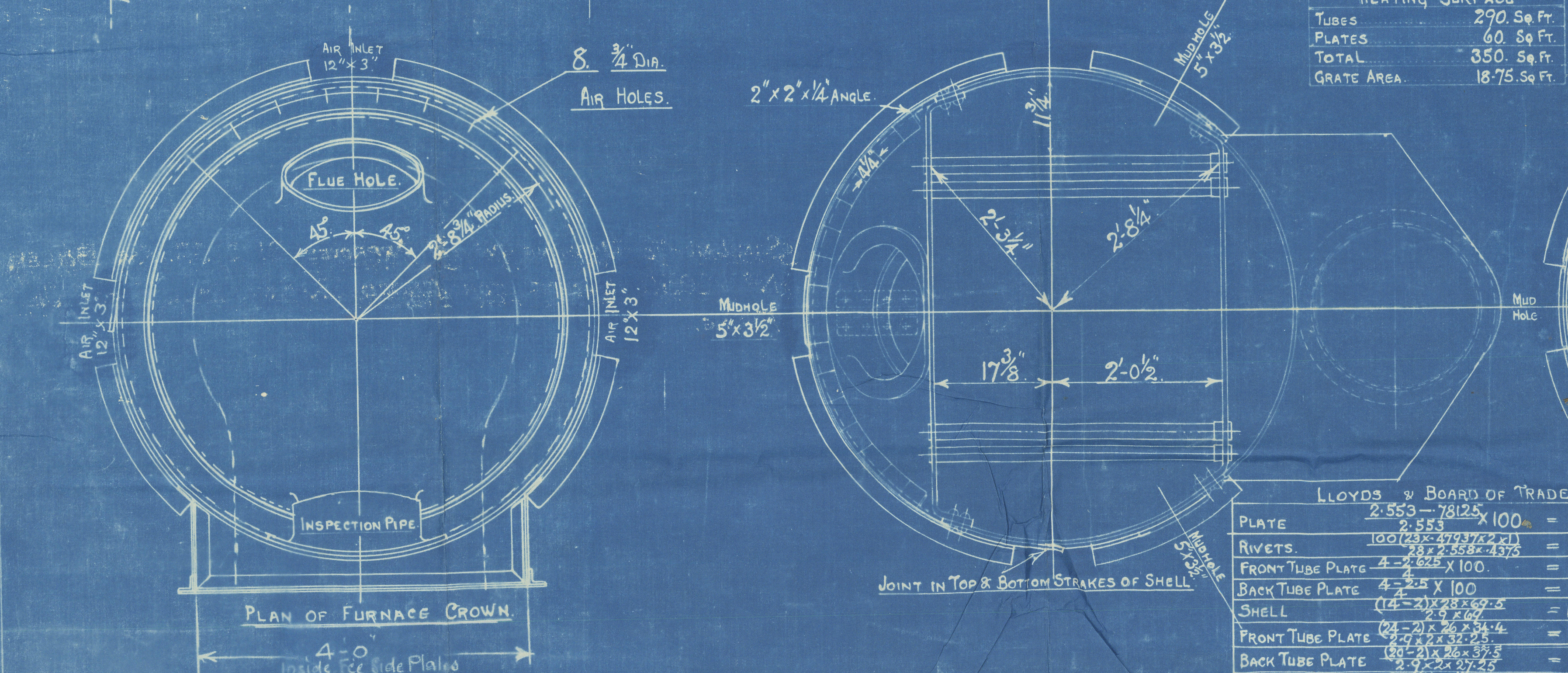
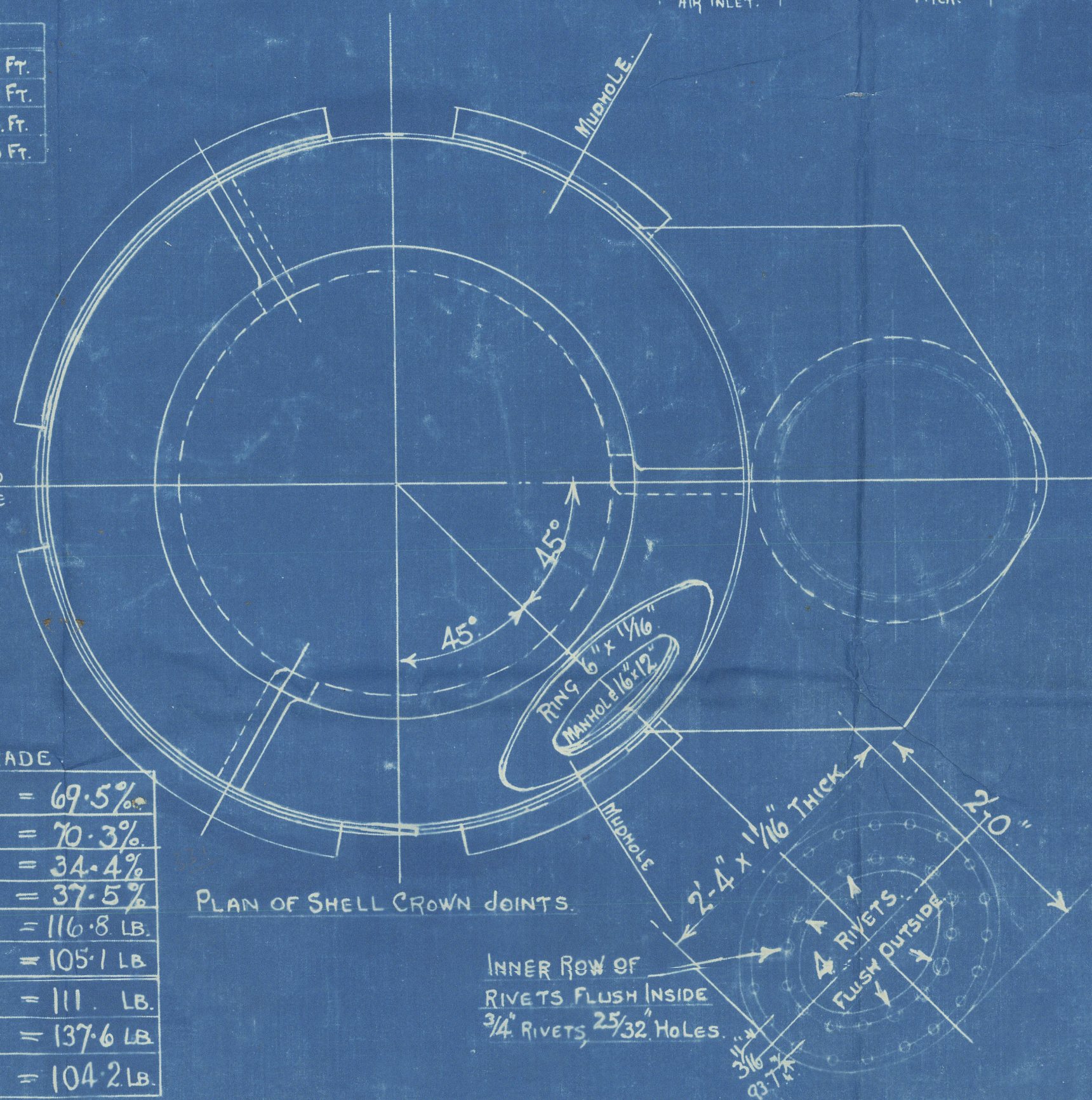
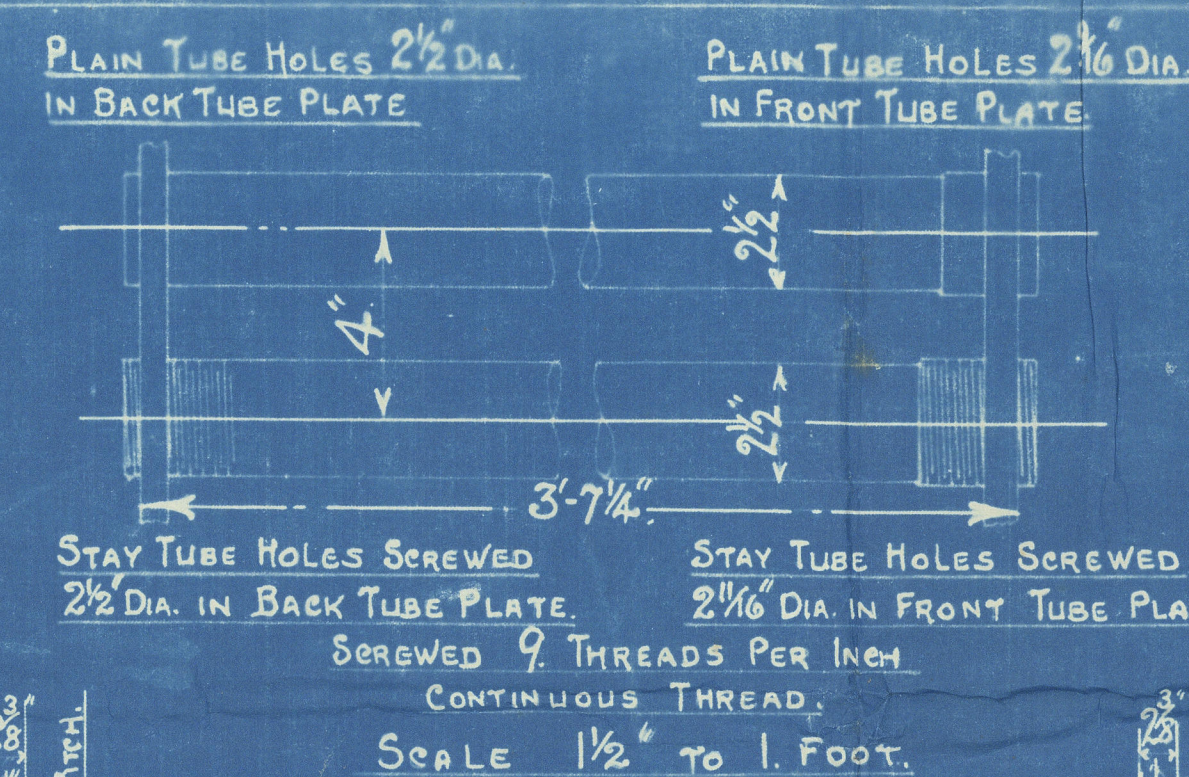


HORIZONTAL FLUE TUBES



HEATING SURFACE	
TUBES	290. Sq. Ft.
PLATES	60. Sq. Ft.
TOTAL	350. Sq. Ft.
GRATE AREA	18.75. Sq. Ft.

LOYDS & BOARD OF TRADE		
PLATE	2-553	100" = 69.5%
RIVETS.	$\frac{100(2.553-4.947)2.1}{4}$	= 70.3%
FRONT TUBE PLATE	$\frac{4}{2.553} \times 100$	= 34.4%
BACK TUBE PLATE	$\frac{4}{2.553} \times 100$	= 37.5%
SHELL	$\frac{(4.947-2.553)2.1}{2}$	= 116.8 LB.
FRONT TUBE PLATE	$\frac{(2.553-2.1)2.1}{2} \times 4$	= 105.1 LB.
BACK TUBE PLATE	$\frac{(2.553-2.1)2.1}{2} \times 4$	= 111.1 LB.
FURNACE	$\frac{2.73(4.947-2.1)}{2}$	= 137.6 LB.
OGEE RING	$\frac{140(2.553-2.1)}{69(69-60)}$	= 104.2 LB.



STEEL PLATES & RIVETS. ALL HOLES DRILLED IN PLACE.

MAN & MUDHOLE DOORS MADE OF TESTED PLATE, FITTED WITH

STUDS SCREWED THROUGH DOORS WITH NUTS INSIDE.

MANDOOR MADE BY CHAS. McNEIL LTD. GLASGOW.

MUDDOORS MADE BY SMETHWICK STAMPING CO. SMETHWICK.

SIMILAR TO DRAWING N° 12711 APPROVED 2-2-33 FOR BOILER
N° 12030 EXCEPT FOR EXTENDED BOTTOM BELT FOR OIL
FIRING.

PATENT BOILER No. 12623.

5'-9" DIA X 14'-9" HIGH X 350 # HS X 100 LBS. W.P.

SCALE 1. INCH TO 1. FOOT.

SIEMENS MARTIN MILD STEEL PLATES

TENSILE TESTS

PLATES NOT EXPOSED TO FLAME OR FLANGED. 28 TO 32 TONS.

PLATES EXPOSED TO FLAME OR FLANGED & RIVETS 26 TO 30. TONS.

1994 \$

W179-0167 DRAWING NO. 15219

INCOMATI

B el. 11296.

Boxer N^o

12623

Dr 9 N^o

19948

VR T

100 lbs

Sub Lon 7-11-33

app. " 10-11-33

N^o 12622

N^o 19317

Lloyd's List

200 lbs

LR

© 2020

Lloyd's Register

GLASGOW REPORT No 614127 Foundation

W179-0167