

29.7.15

PROFILE & DECK PLAN

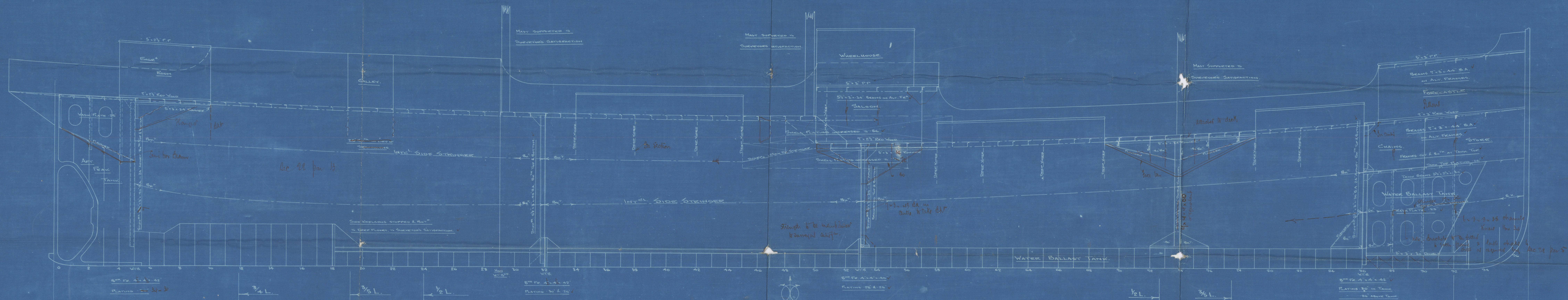
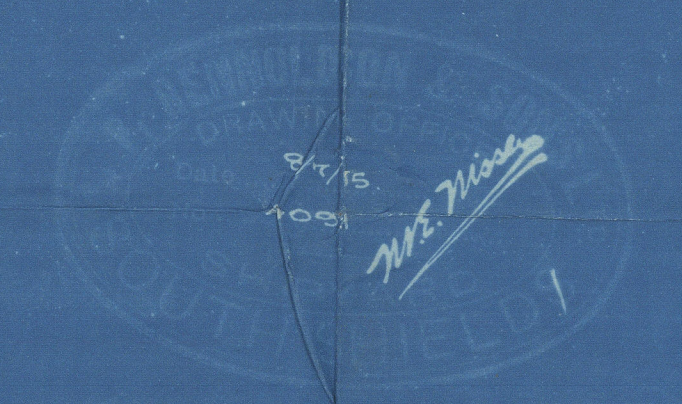
STEEL SCREW STEAMER

Nº 301.

DIMENSIONS - 178'-0" x 29'-10" x 14'-6" MOULDED.

SCALE 1/4" = 1 FOOT.

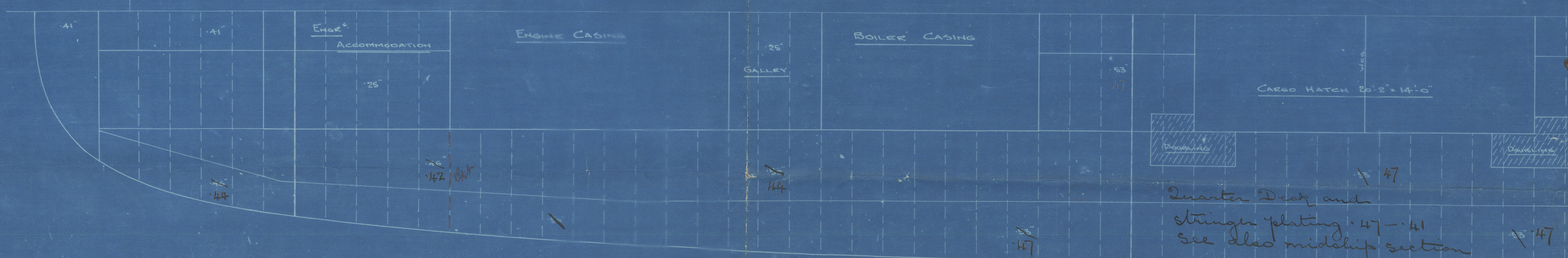
PILLARING THROUGHOUT TO SURVEYOR'S SATISFACTION.



RAISED QUARTER DECK

BEAMS - 5 1/2" x 8" x 34", 1/2 BEAMS 5" x 3" x 34" ON EVERY FRAME.

HATCH END BEAMS 8" x 3" x 42" S.A.



Quarter Deck and
stringer plating 1/4" - 1/2"
See also midship section

MAIN DECK

BEAMS 5 1/2" x 3" x 34", 1/2 BEAMS 5" x 3" x 34" ON EVERY FRAME.

HATCH END BEAMS 8" x 3" x 42" S.A.



29.7.15

W179-0077

ENCLOSURE TO

Messrs. Lloyd's Committee

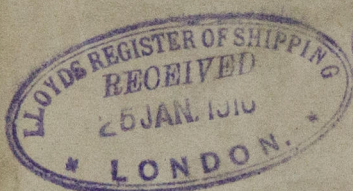
10,000 370 23/9/13 19/05357

FROM R. & W. HAWTHORN, LESLIE & CO., LTD.,
ST. PETER'S WORKS, NEWCASTLE-ON-TYNE.

W179-0099

Messrs J. P. Remoldson & Sons Ltd
Profile & Deck Plan

S. S. No 301.



S.S. EDITH

NEWCASTLE ON TYNE.

Report No: 69654



© 2020

Lloyd's Register
Foundation