

LLOYD'S NUMERALS.
DEPTH D 37' 41" D = 29' 41" FOR F&P PAINTING
1ST LONGT. NO. = L + D = 405 + 37' 41" = 18151.
2ND " " = L + (B + D) = 405 + 55' 8" + 37' 41" = 37729.
PROPORTIONS $\frac{1}{10} = \frac{405}{37.91} = 10.68$

FURNESS & CO. L^{td}
HARTFORD HILL ON TEES.

SHIP NO 150.

S. S. HADFIELD

INCLUDING 4 T. BULKHEADS, STRENGTHENING OF BOTTOM FOR
PILARS & GIRDERS.

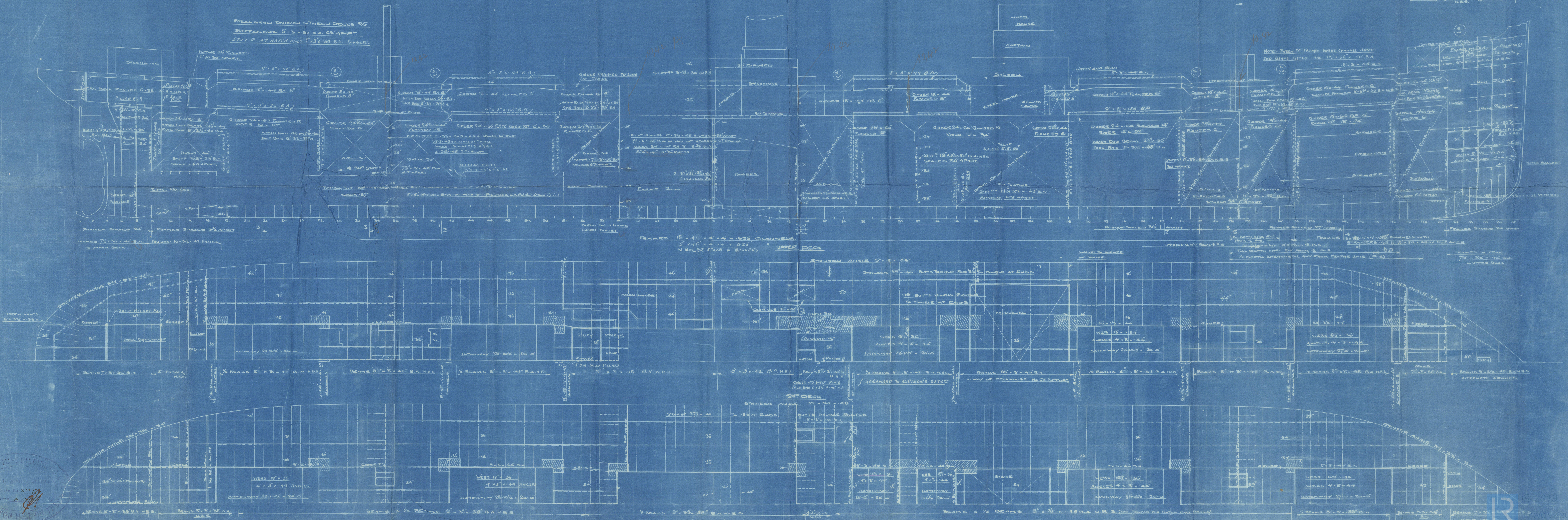
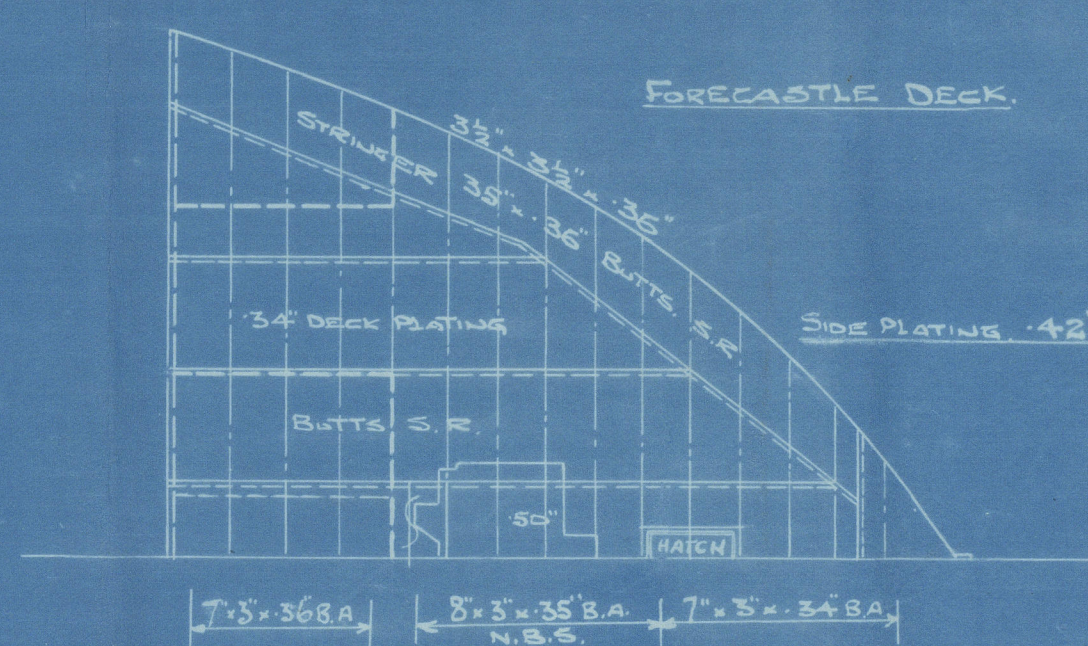
— PROFILE & DECKS —

DIMENSIONS 405' 0" LENGTH B.P. 55' 8" BREADTH M.P. 29' 5" M.P. TO 2ND DECK 37' 11" TO UPPER DECK.

TO CLASS $\frac{1}{2}$ 100 A.1. WITH FREEBOARD CORRESPONDING TO A DRAFT NOT EXCEEDING

SCALE $\frac{1}{8}$ = 1 FOOT.

THAT CONTEMPLATED BY THE RULES FOR A COMPLETE
SUPERSTRUCTURE VESSEL HAVING A TONNAGE OPENING.



SHIPBUILDING CO.
HARTFORD HILL ON TEES.
DATE 6/1/1900

FURNESS S.B. Co.

YARD No 150

HADLEIGH.
S.S. ~~HADFIELD~~

PROFILE & DECKS.

W

S.S. Hadleigh
MDB. RPT. No. 13936

4



© 2019

Lloyd's Register
Foundation

W178-0064