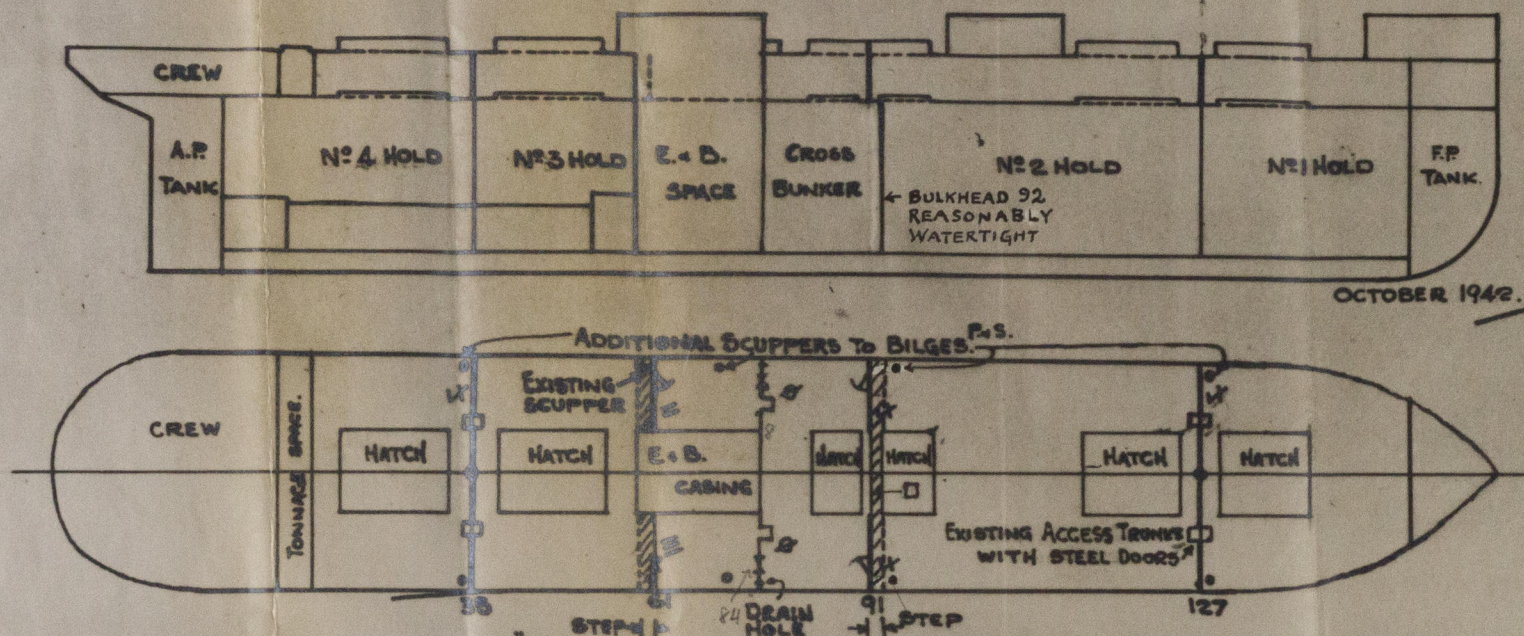


"HADLEIGH"

ADDITIONAL TWEEN DECK BULKHEADS.



OCTOBER 1942.

- ✓ NEW BULKHEADS $\frac{3}{16}$ PLATING, $5 \times 5 \times \frac{3}{8}$ STIFFENERS AT 36" APART. PLATING RIVETED TO BEAMS AND FRAMES W.T. SPACING. WELDED TO DECK. FR. 35, 91, 127.
- ≡ EXISTING BULKHEAD AT FR. 61 $\frac{1}{4}$ PLATING 4" FLANGED PLATE STIFFENERS AT 36" APART NOW FITTED WITH $3 \times 3 \times \frac{3}{8}$ REVERSE ANGLES.
- EXISTING BULKHEAD AT CENTRE AT FR. 91 $\frac{1}{4}$ PLATING 4" FLANGED PLATE STIFFENERS AT 42" APART. INTERMEDIATE STIFFENERS $4 \times 3 \times \frac{1}{2}$ NOW FITTED.
- W.T. DOORS $5'6" \times 2'6"$ OPERATED BOTH SIDES, FITTED AT FR. 61 AND 91 P. & S. 9" SILL.
- AT STEPPED BULKHEADS WHERE FRAMES PASS THROUGH DECK PLATES NOW WELDED IN.
- ⊙ EXISTING BULKHEAD WITH TONNAGE OPENING FR. 84 P. & S.
- ≡ EXISTING BULKHEAD AT FR. 61 WITH TONNAGE OPENING NOT DEALT WITH AT THIS TIME.



© 2019

Lloyd's Register
Foundation

W178-0053

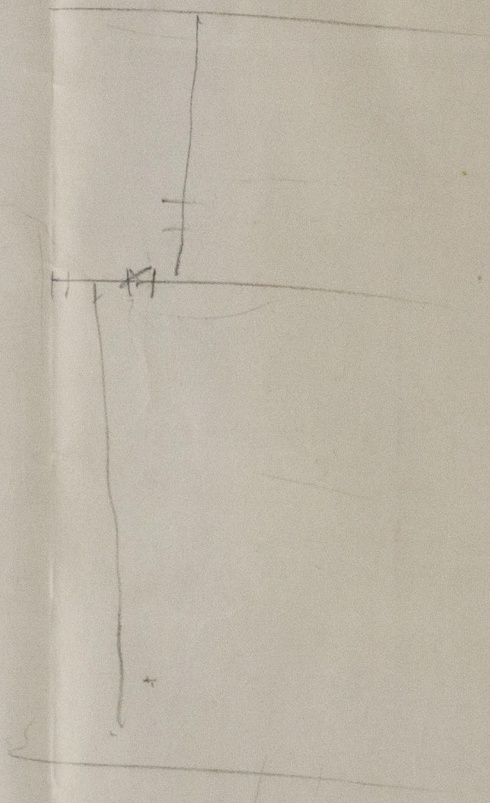
- 3 NOV 1942

S/S

"Hadleigh".

Additional Tween
Deck Bulkheads.

Lon. report No. 110744.



© 2019

Lloyd's Register
Foundation

W178-0053