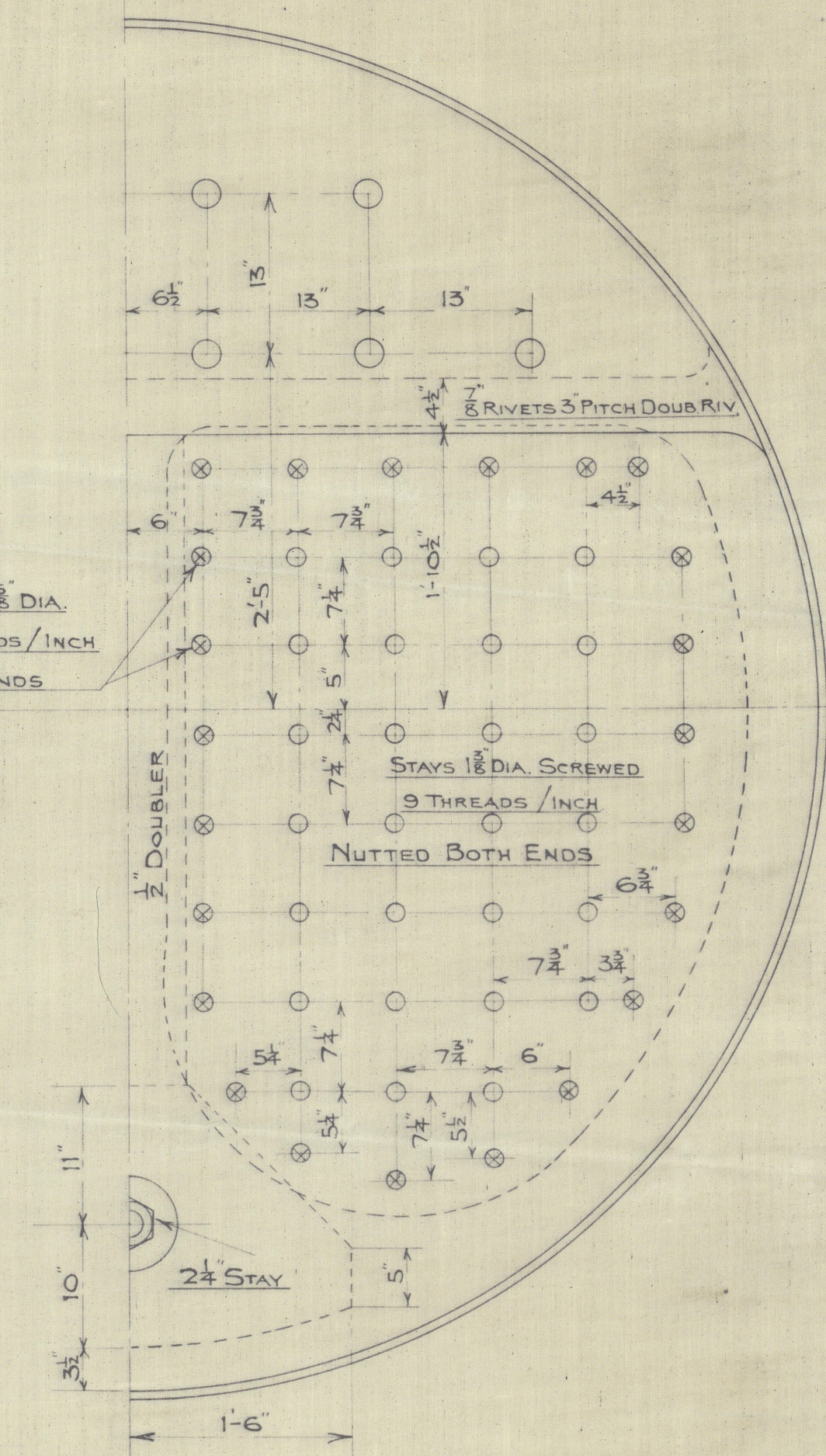
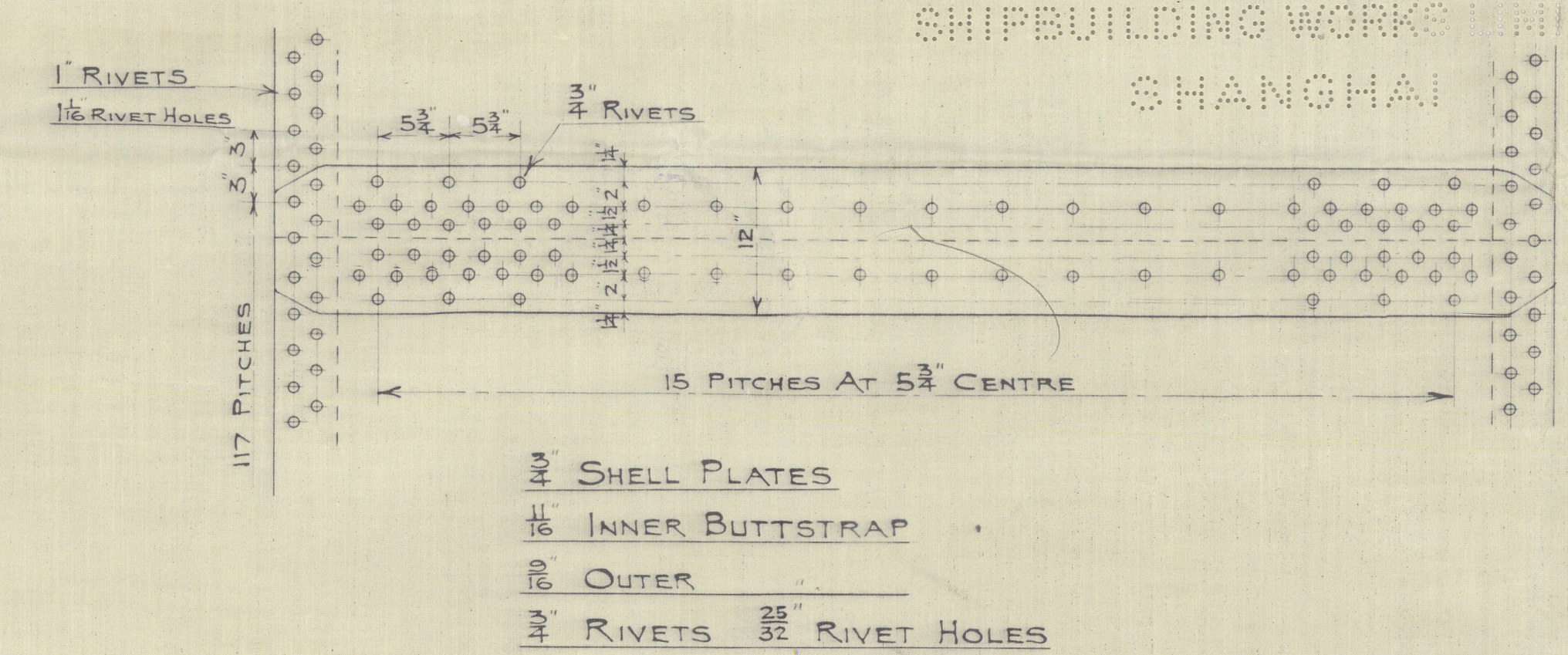
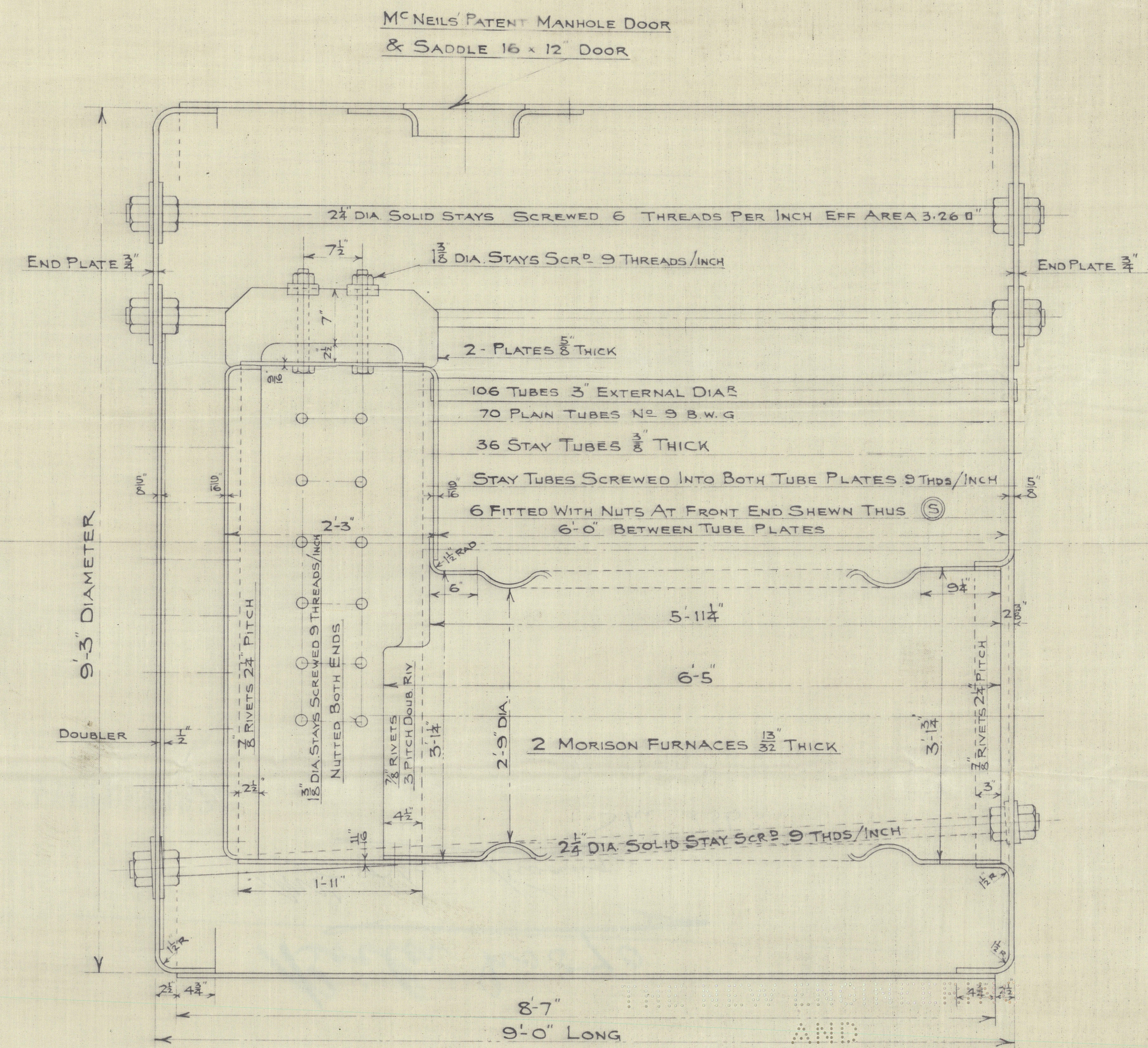


HEATING SURFACE

TUBES	=	499.4
FIRE BOX	=	66.4
FURNACES	=	118.2
TOTAL	=	684.0

TENSILE STRENGTH OF PLATES

SHELL & BUTT STRAPS	28 To 32 TONS
GIRDER PLATES	28 To 32 TONS
ENDS & COMBUSTION CHAMBERS	26 To 30 TONS
FURNACES	26 To 30 TONS
STAY BARS	28 To 32 TONS



APPROVED

 KOBÉ

BOILER N° 570
9'-3" DIA. x 9'-0" LONG
SCALE 1" = 1 FOOT

TO BE CONSTRUCTED TO LLOYDS RULES & SURVEY
 FOR A WORKING PRESSURE OF 160 LBS. / sq. in.
 HYDRAULIC TEST 290 LBS. / sq. in.

DRAWING N° 7/25

THE ENGINEERING AND
 SHIPBUILDING WORKS, LTD.
 A. H. PRANKSTON
 MANAGING DIRECTOR

2019

Lloyd's Register
 Foundation
 W 177-0193

SHANGHAI
SHANGHAI ENGINEERING WORKS LTD
VMD
THE NEW ENGINEERING

Boiler No 570

Mr. Hai Kwang

W177-0193

Shi. 2363.



© 2019

Lloyd's Register
Foundation