

TO LLOYD'S REQUIREMENTS FOR A WORKING PRESS: OF 180 LBS PER SQ INCH &amp; TEST PRESS: OF 320 LBS PER SQ INCH.

ALL PLATES, RIVETS, STAYS &amp; GIRDERS OF STEEL. TUBES OF WROT IRON.

SCALE: ONE INCH = ONE FOOT.

ENGINE

907 3 OFF

INTENDED FOR  
MESSRS J.L. THOMPSON'S 5/5 NO 569.

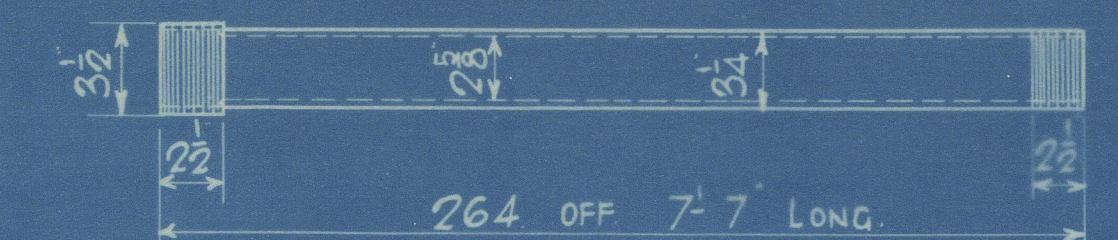
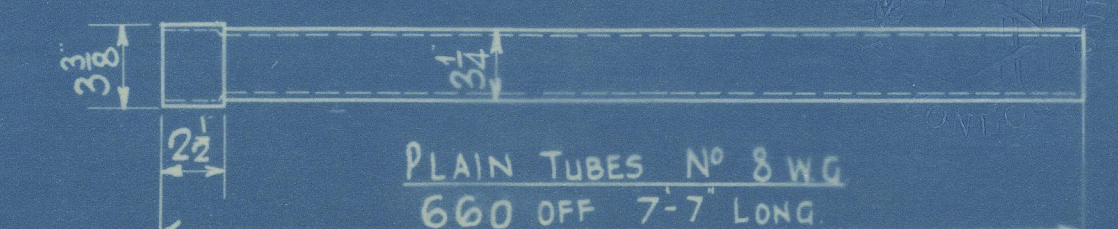
DATE FURNACES

MAY 15<sup>TH</sup> 29 DEIGHTON SECTION.Total Heating Surface in  
3 Boilers = 6999.

PLATE	TONS PER SQ
SHELL PLATES & BUTTS	28-32
COMB. CHAMBS GIRDERS	28-32
ALL OTHER PLATES	26-30
MANHOLE STIFFENING RING	28-32

POSITION	RIVETING	RIVET HOLES	PITCH	LAP
FRONT & BACK SEAMS	DOUBLE	1 3/8	3 1/2	5 3/8
COMB. CHAMBS LONG SEAMS	SINGLE	1 3/8	2 1/2	2 3/8
COMB. CHAMBS & FURNACE	SINGLE	1 3/8	2 3/8	2 3/8

TENSILE TONS/SQ	DIA	THRODS PER IN	EFF. DIA	EFF. AREA	NO IN BOILER
26 TO 30	1 3/8	9	1.48	1.75	6
	1 3/8	9	1.608	2.031	226
	1 3/8	9	1.793	2.355	54
	2	9	1.858	2.69	4
28 TO 32	2 1/8	6	2.086	3.25	4
	3	6	2.786	6.1	12

STAY TUBES 5/8 THICK SCREWED 9 THRODS/INCH  
EFF. AREA 2.1737

MANHOLE 16" 12.

STIFFENING RING 8 3/4" x 1 1/4"

RIVET HOLES 1 3/8" DIA

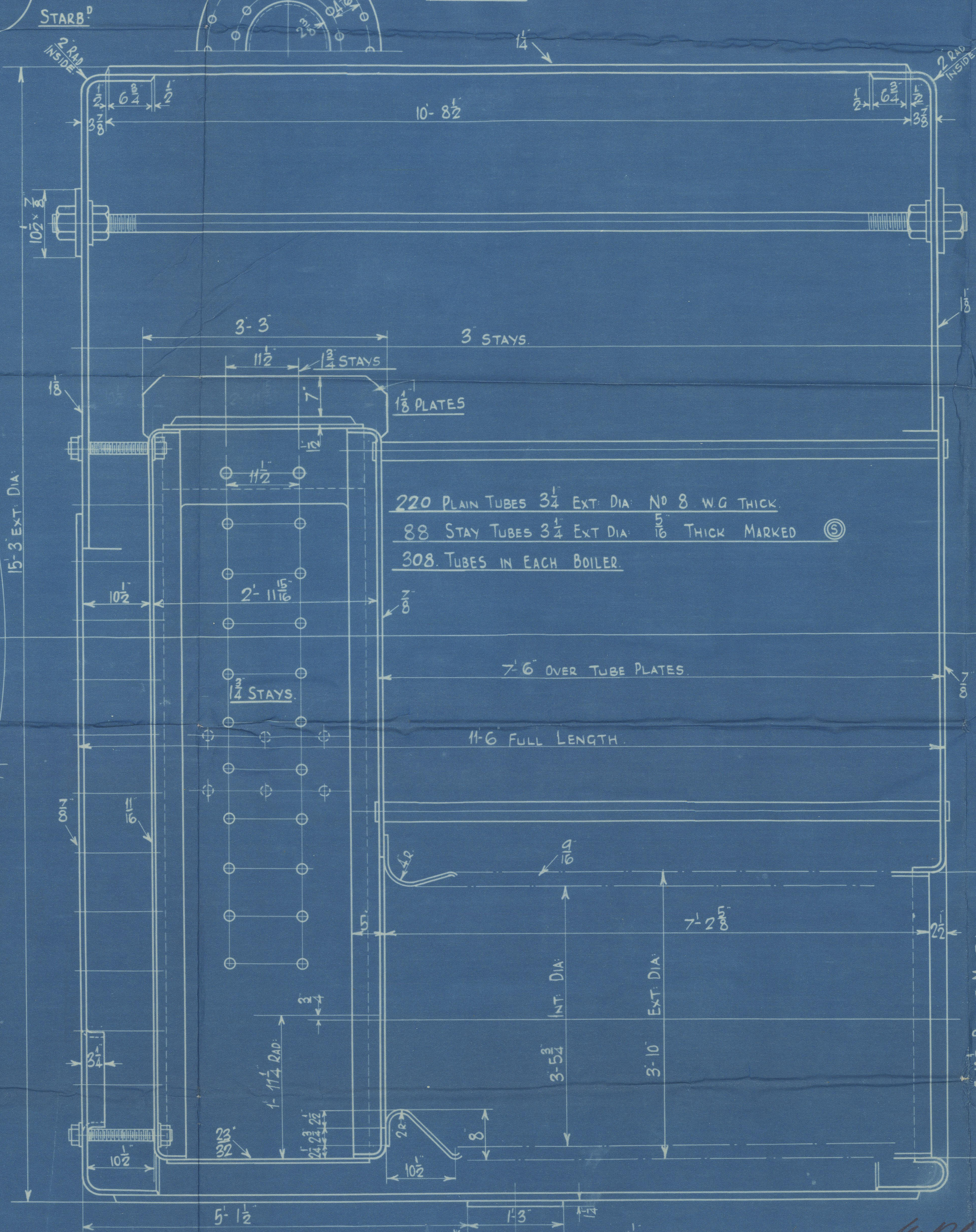
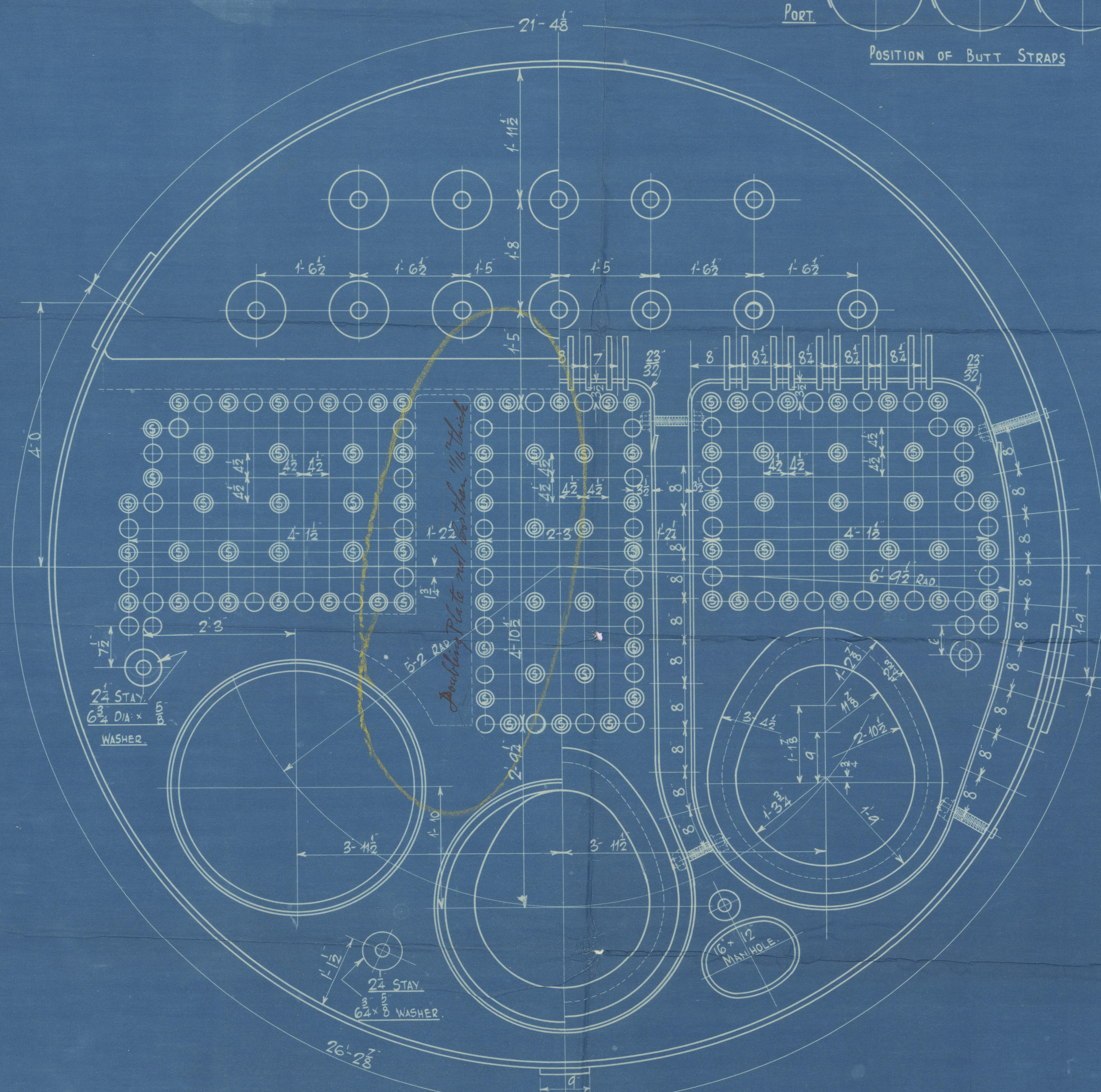
HOLE IN STIFFENING RING.

16 1/2" x 12 1/4"

PORT.

STARBOARD

POSITION OF BUTT STRAPS



NOTE: STAYS BETWEEN COMB. CHAMBERS &amp; MARGINAL STAYS IN BACKS

SCREWED THRO BOTH PLATES &amp; MUST FIT TO EACH END

STAYS FROM COMB. CHAMBERS TO SMALL IN BACKS OF STAYS 21

IN BACKS TO HAVE NUT ON INNER END ONLY &amp; TO

PROJECT 8 &amp; TO BE CAULKED AT OUTER END.



SUNDERLAND

JOHN DICKINSON & SONS

C. 907

FOR J. L. THOMPSON & SONS' LTD.

No. 569.

MAIN BOILERS.

8/s. "Helmopay"

SUNDERLAND BPT. NO. 30654

X176-0098



© 2021

Lloyd's Register  
Foundation