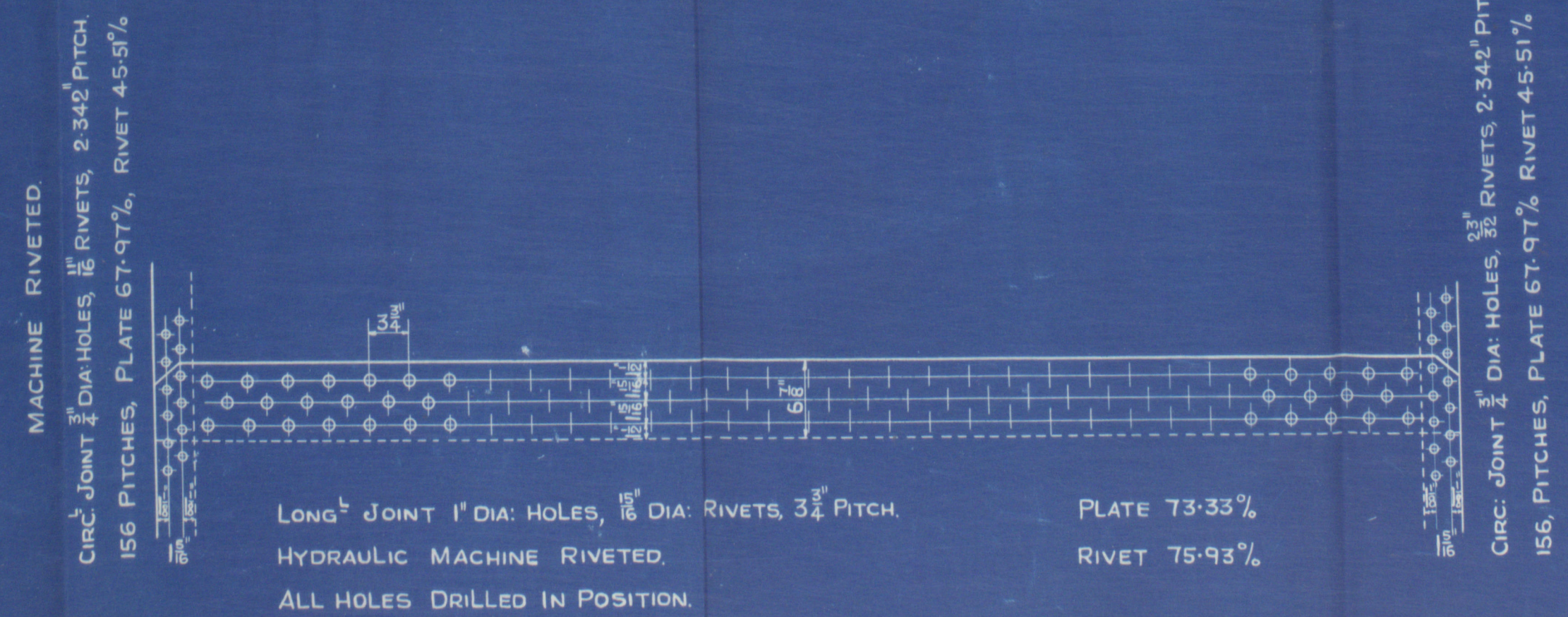
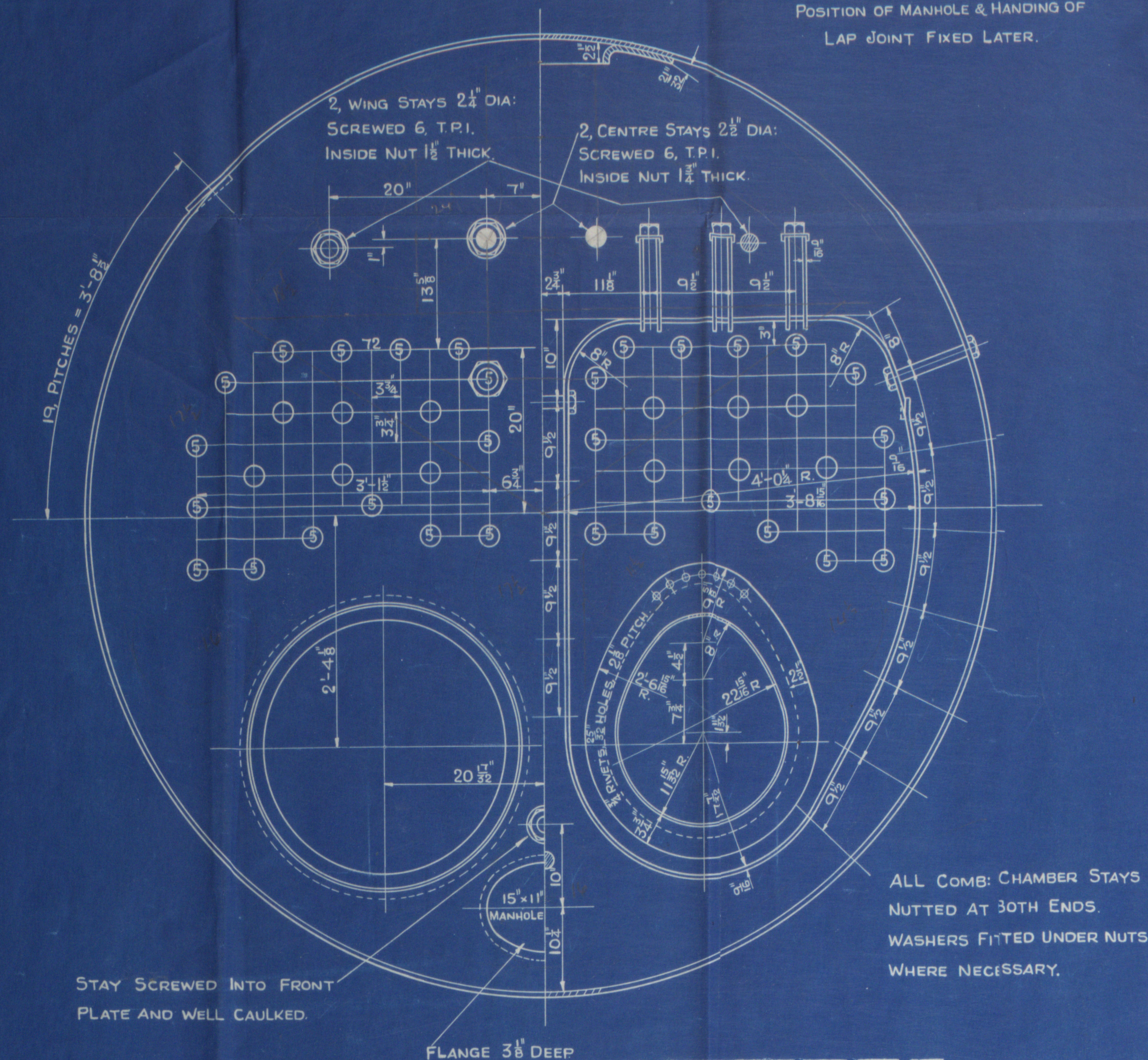
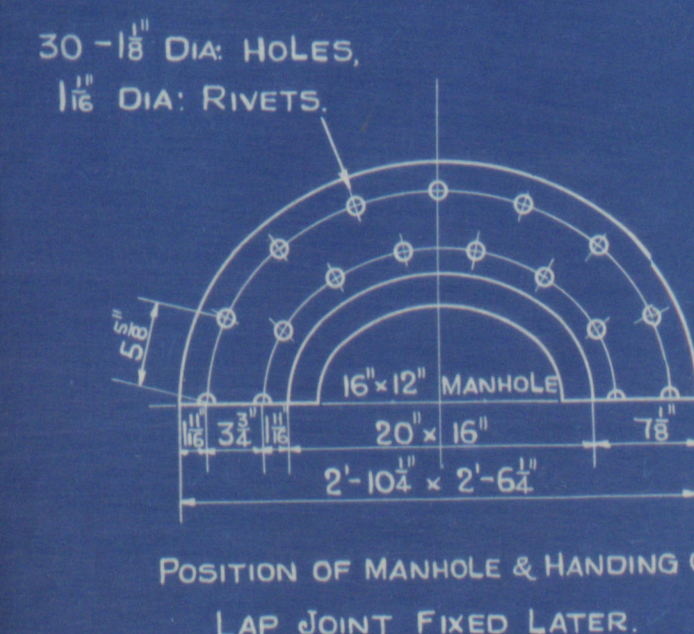


TENSILE STRENGTH OF MATERIALS.

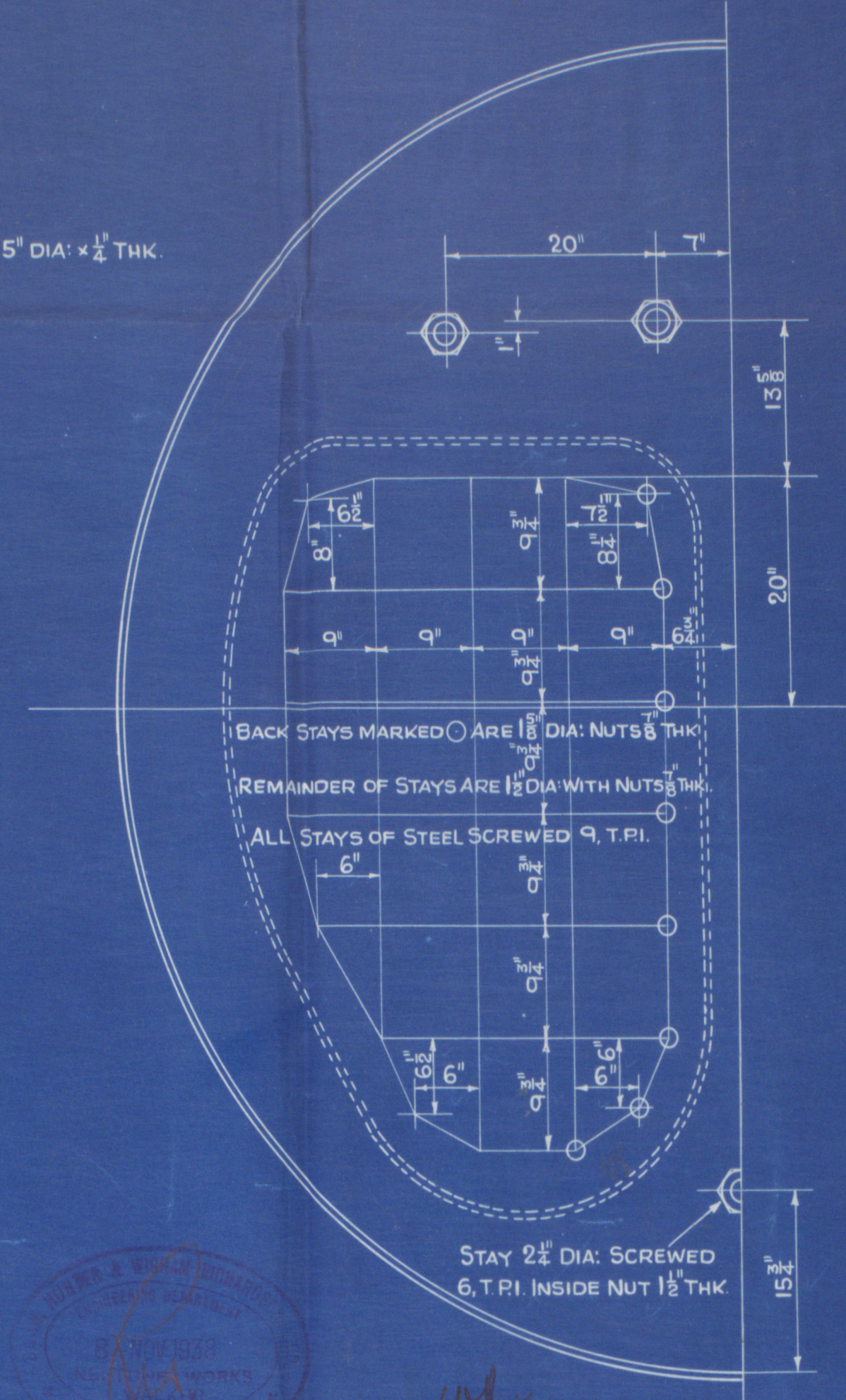
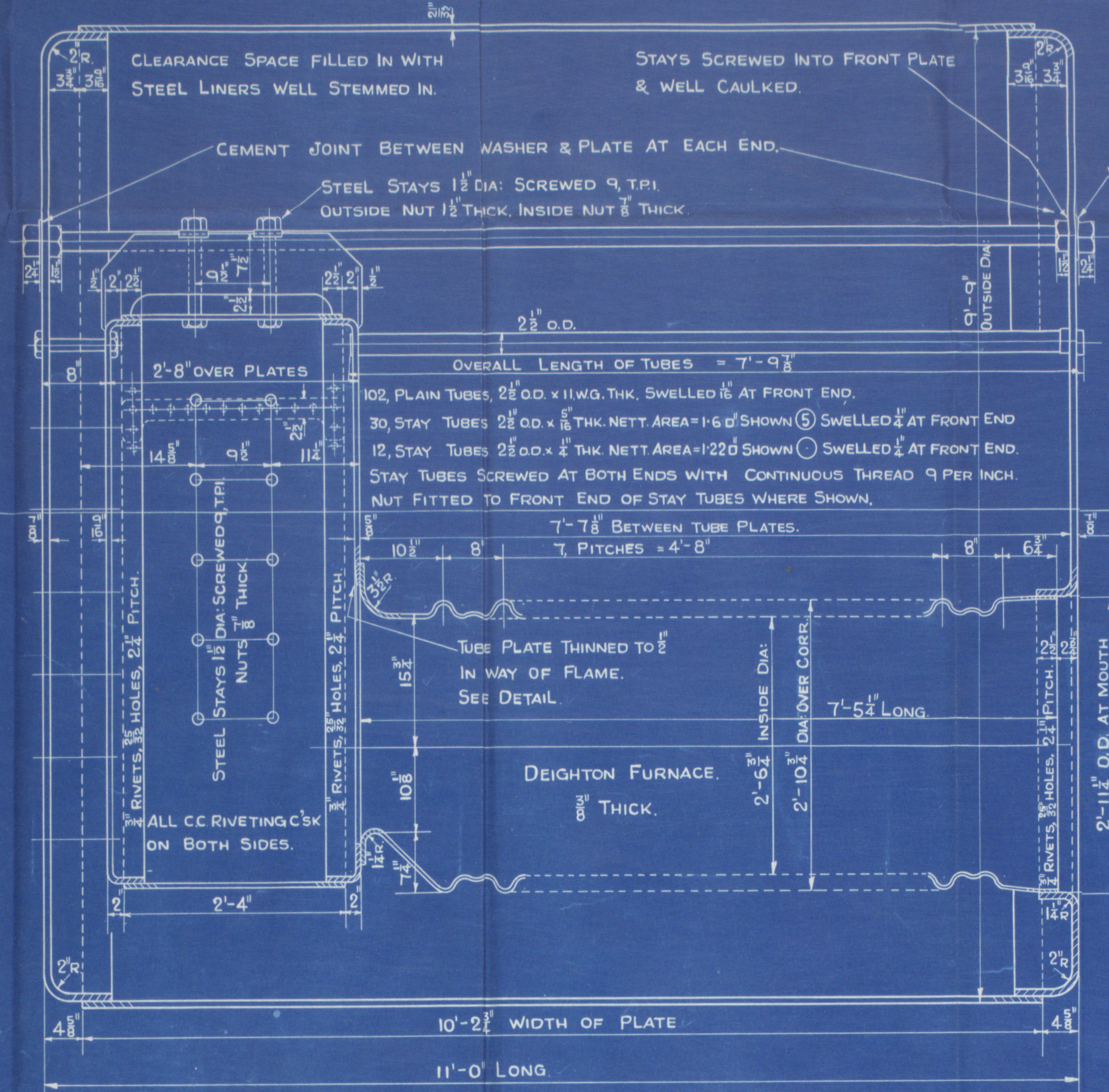
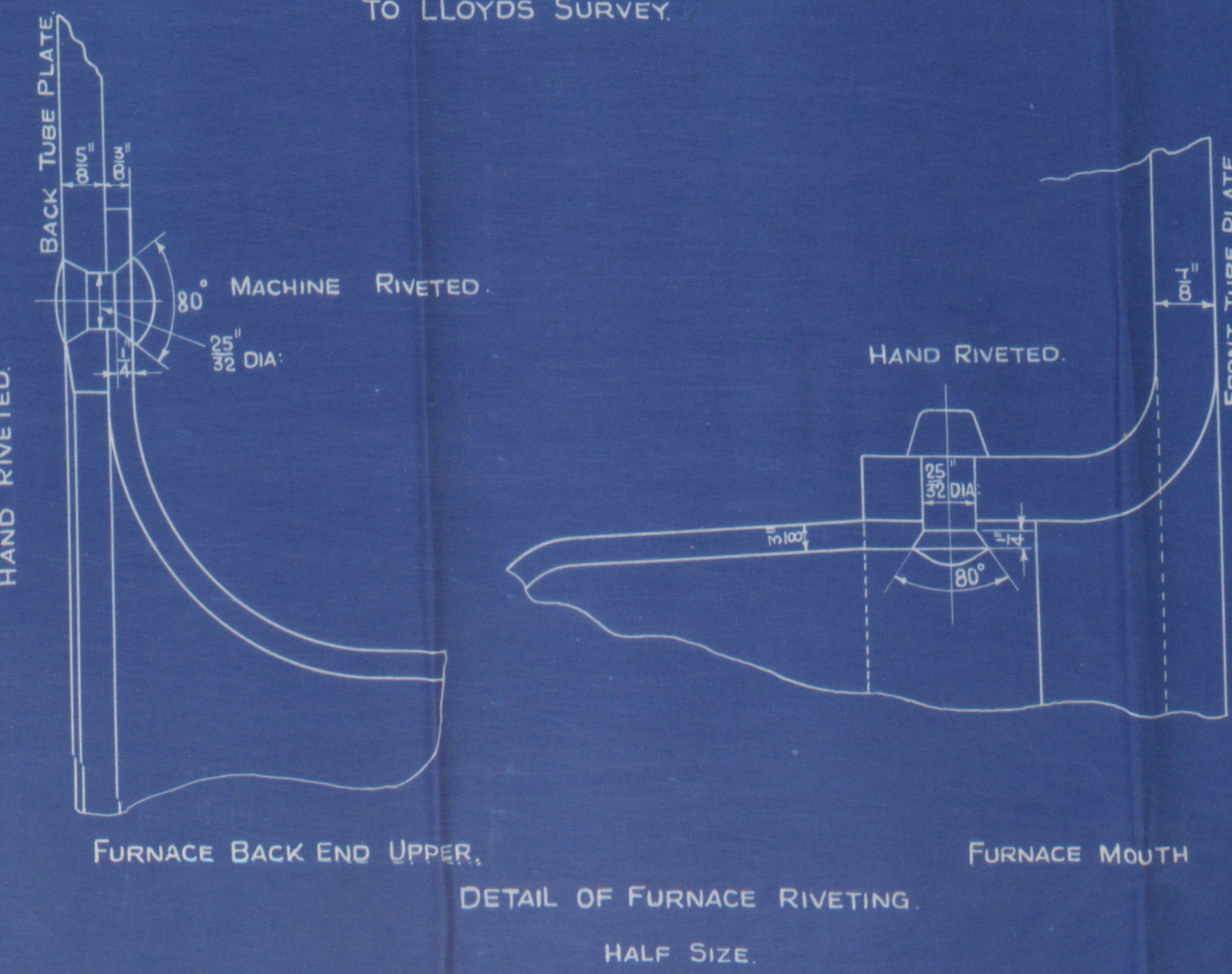
CYL SHELL PLATE	= 29 To 33 TONS/D'
GIRDER PLATES	= 28 To 32 TONS/D'
ALL OTHER PLATES & FURNACES	= 26 To 30 TONS/D'
LONG ¹ STEEL STAYS	= 28 To 32 TONS/D'
SCREW STAYS & RIVET BARS	= 26 To 30 TONS/D'

ALL PLATES OF STEEL.
ALL STAYS OF STEEL.
ALL RIVETS OF STEEL.
ALL TUBES OF IRON.

WORKING PRESSURE = 120 LBS/D'
TEST PRESSURE = 230 LBS/D'



TOTAL HEATING SURFACE (2 BOILERS) = 2010 SQ. FT.
TO LLOYDS SURVEY.



B.856

DRAWN BY	J. H.
CHECKED BY	H. W. B.
DESIGNED BY	G. L. E.
DATE	

SWAN, HUNTER, &
WIGHAM, RICHARDSON LTD
ENGINEERING DEPARTMENT.
NEPTUNE WORKS.
NEWCASTLE-ON-TYNE.
DATE. |

LONDON COPY

LLOYDS

2-THUS.
OIL FIRED BOILERS.

NO.	DATE.
1606	

SCALE: 1" = 1 FOOT.



Lloyd's Register
Foundation

W34-0194

SWAN, HUNTER, & WIGHAM
RICHARDSON LTD.

SHIP NO. 1567

ENGINE NO. 1606

Oil Fired Boilers

Drawing N° 2. 856.

18

LONDON Corp

"Hav"

Nwz. 97822

~~159~~



W174-0194



© 2019
Lloyd's Register
Foundation