

SURFACES	ONE BOILER	2 BOILERS
TUBES	2100	6300
FIREBOX TOP & SIDES	158	474
BACK	82	246
TUBE PLATE	55	165
FURNACES	161	483
TOTAL HEATING SURFACE	2556	7668
GRATE AREA (5" x 6" BARS)	63.3	190
TUBE AREA	1165	3495
WATER	160	480
STEAM SPACE	514	1542
GRATE AREA HEATING SURFACE	1:40"4	
TUBE AREA	1:33"2	
WATER	5:43"1	
STEAM SPACE	1:2"52	
% BOILER ABOVE FIREBOX	1:8"1	
WEIGHT OF WATER	32.2	
	264 TONS	794 TONS

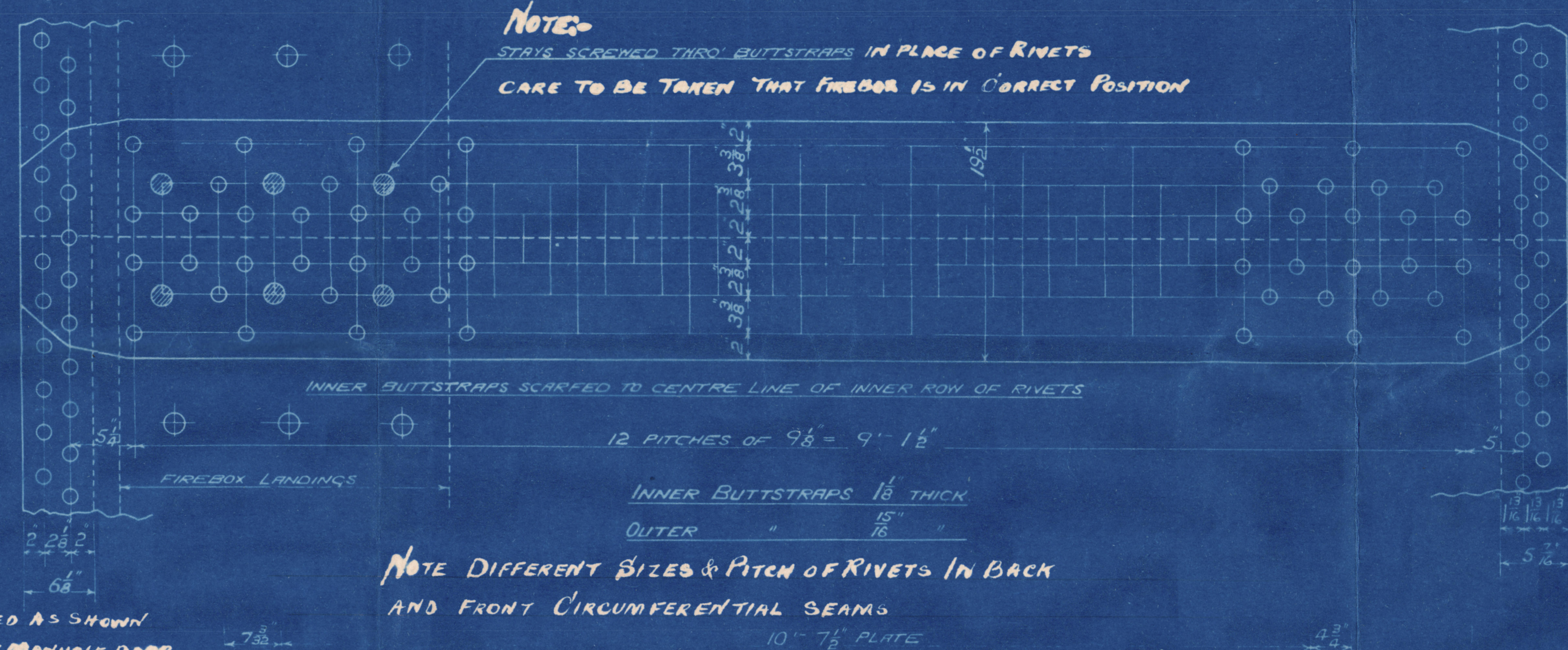
RIVETING	LONG L	BACK END CIRC L	FRONT END CIRC L
RIVET HOLE DIA	1 1/2	1 1/2	1 1/2
PITCH	9 1/2	3 5/4	3 1/4
% PLATE	85.6	63	63
% RIVET	88.3	51.9	46.5

LIMITS OF TENSILE STRENGTH & MATERIAL		
SHELL, BUTTSTRAPS & CARGERS	28 TO 32 TONS	
OTHER PLATES	26	30
FURNACES	26	30
MAIN STAYS	28	32
SCREWED STAYS	26	30
RIVET BARS	26	30

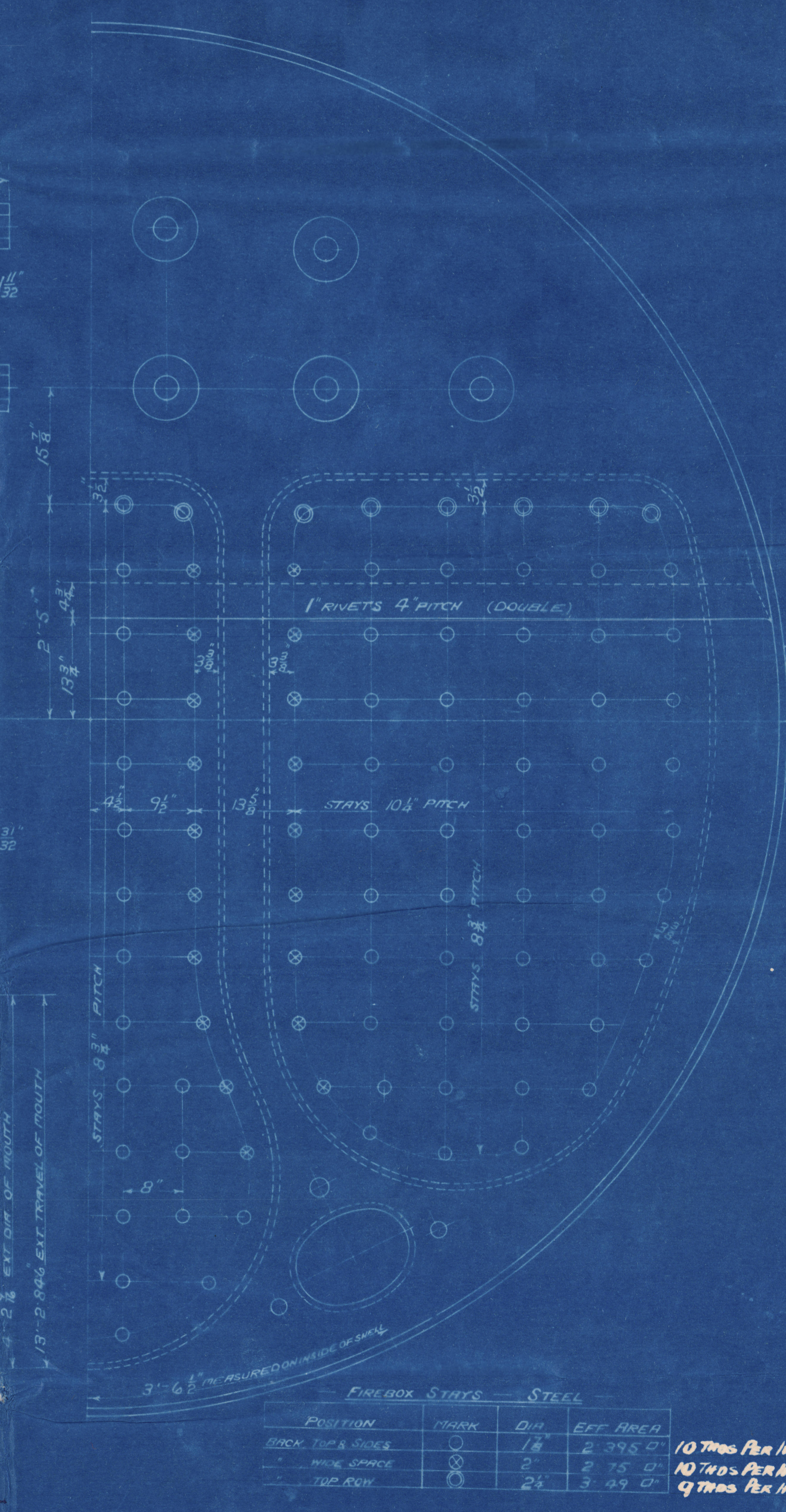
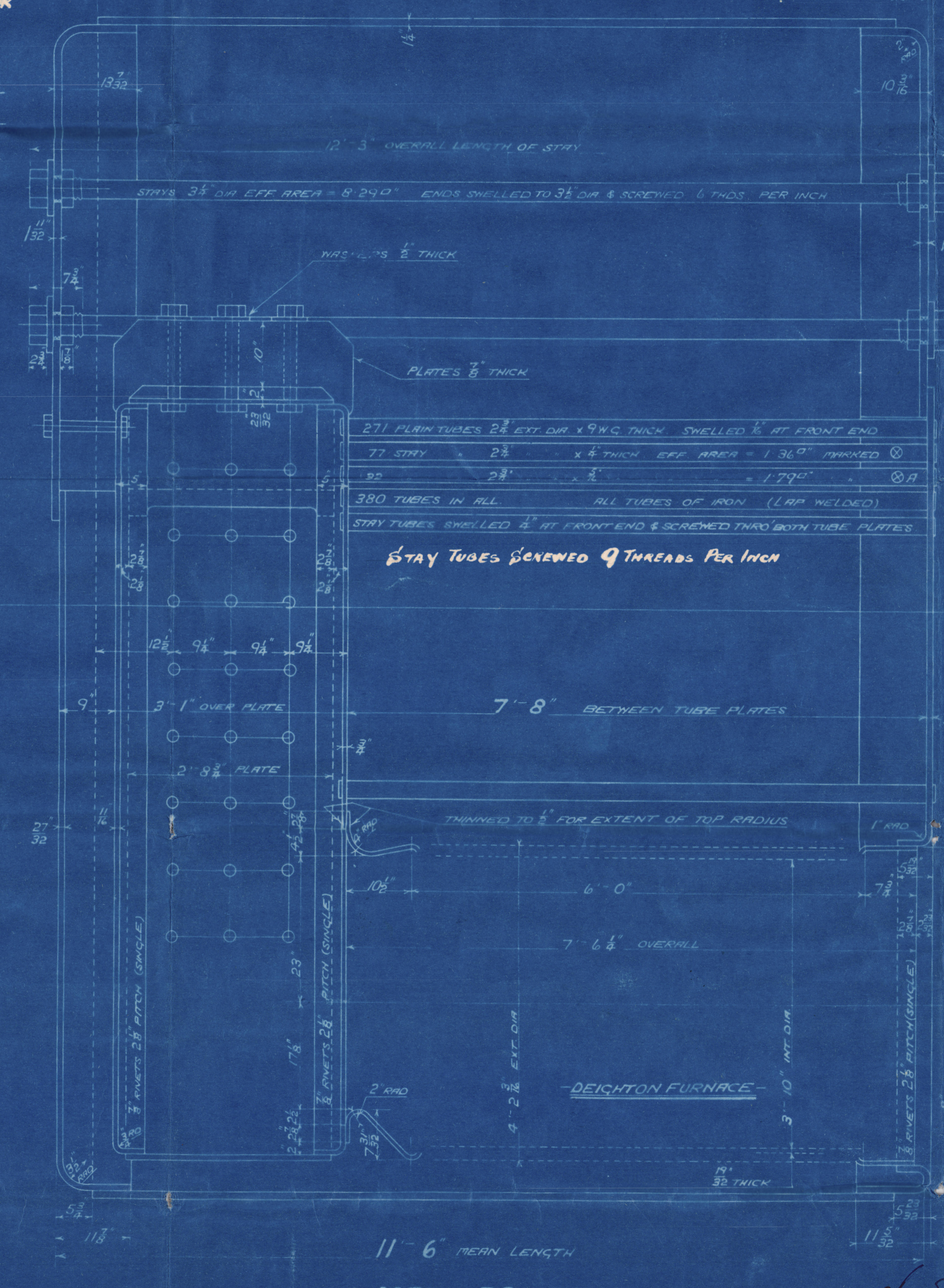
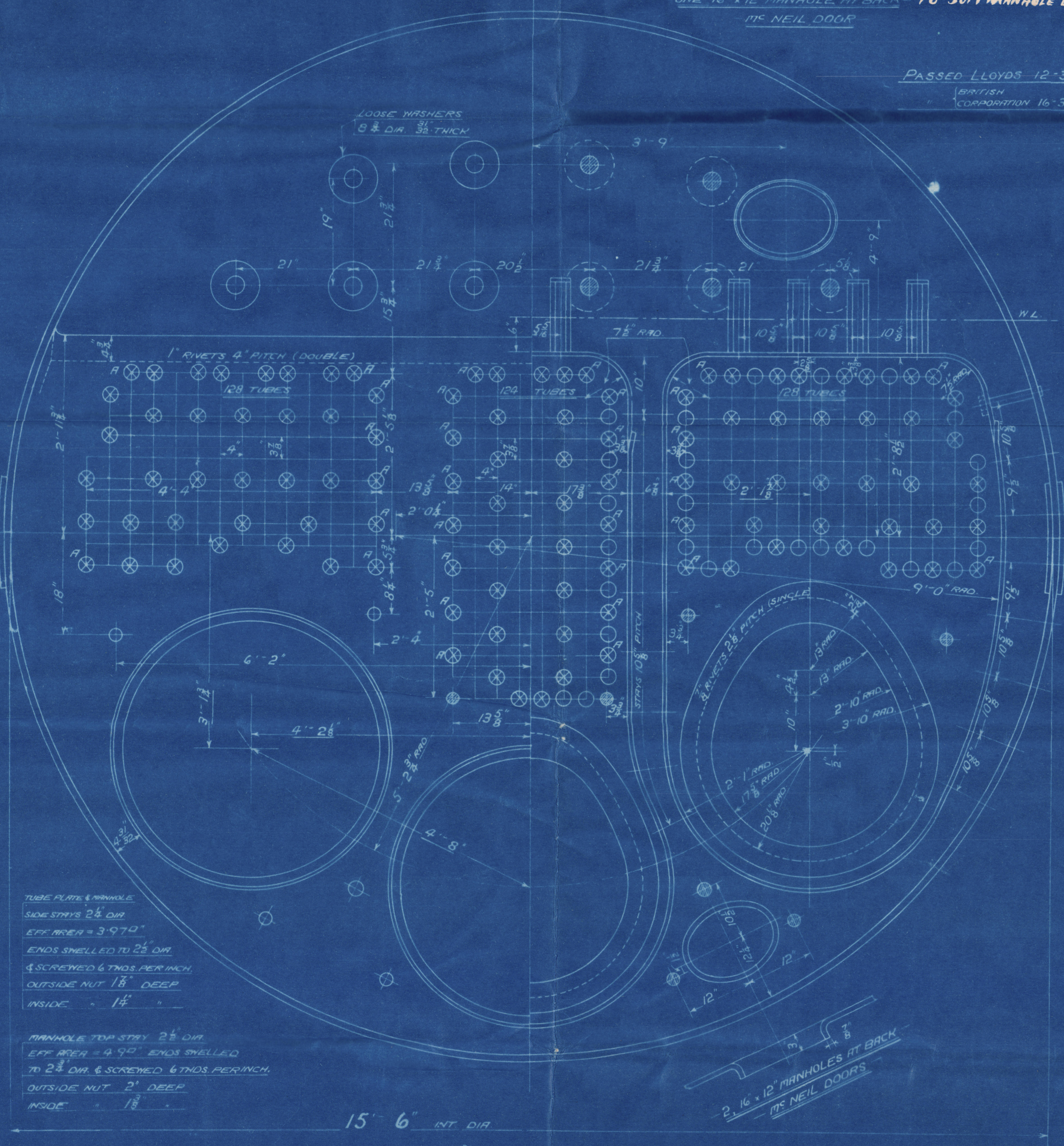
ALL RIVET HOLES DRILLED IN PLACE
MAIN STAYS SHELLED AT ENDS
AND TURNED DOWN AS SHOWN

ONE 16" x 12" MANHOLE AT BACK - TO SUIT MANHOLE DOOR
1/15 NEIL DOOR

PASSED LLOYDS 12-3-17
BRITISH CORPORATION 16-3-17



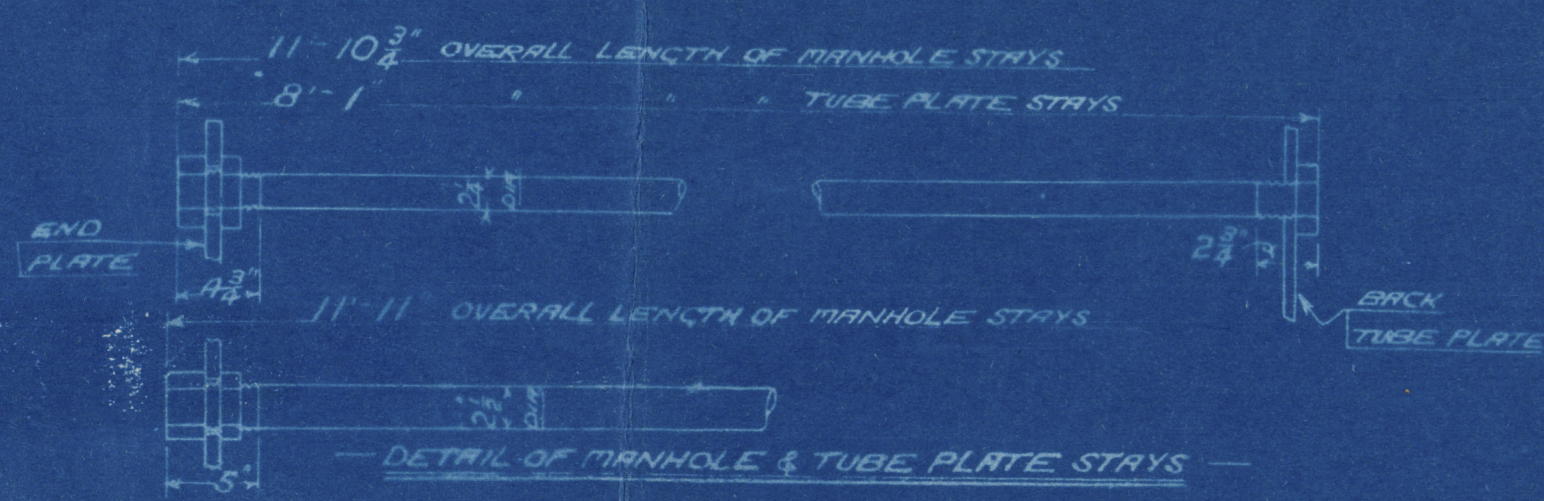
TRACING No 4681



TUBE PLATE & MANHOLE
SIDE STAYS 2 1/2" DIA
EFF AREA = 3.979"
ENDS SHELLED TO 2 1/2" DIA
& SCREWED 6 THDS PER INCH
OUTSIDE NUT 1 1/2" DEEP
INSIDE 1 1/2"

MANHOLE TOP STAY 2 1/2" DIA
EFF AREA = 4.94"
ENDS SHELLED TO 2 1/2" DIA & SCREWED 6 THDS PER INCH
OUTSIDE NUT 2" DEEP
INSIDE 1 1/2"

15'-6" INT DIA



11'-6" MEAN LENGTH

MAIN BOILER (SECOND SERIES)
- 3 OFF -

WORKING PRESSURE = 180 LBS PER SQ INCH
TO PASS LLOYDS SURVEY
SCALES 1" & 1 1/2" = ONE FOOT

CONTRACT No 532

ALL FIREBOX STAYS SCREWED THRO' BOTH PLATES & NUT FITTED AT EACH END
EXCEPT STAYS FROM WING FIREBOX TO SHELL WHICH PROJECT 8" & ARE CHALKED.
ALL 1 1/2" NUTS 1 1/2" DEEP EXCEPT ON CARGER TOPS WHERE THE OUTSIDE NUTS ARE 1 1/2" DEEP.
ALL 2" & 2 1/2" NUTS 1 1/2" DEEP

DAVID ROWAN & CO'S
REFERENCE
OT 23496A
TRACED 7th MARCH 1917

SUNDERLAND

W. DOXFORD & SONS L^d

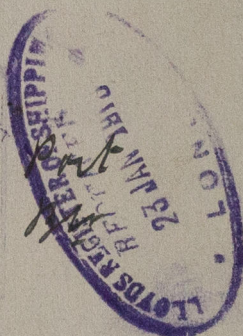
(3) BOILERS N^o 532

WP = 180 LBS

"A" TYPE

s/s "HARESFIELD"

No. 3557
LLOYD'S TEST
360 lbs.
G.A.H. 5.5.19



No. 3561
LLOYD'S TEST
360 lbs.
G.A.H. 12.5.19

Stank
Mr

No. 3563
LLOYD'S TEST
360 lbs.
G.A.H. 17.5.19

Curtis
Mr

SUNDERLAND RPT. NO. 27570



Lloyd's Register
Foundation