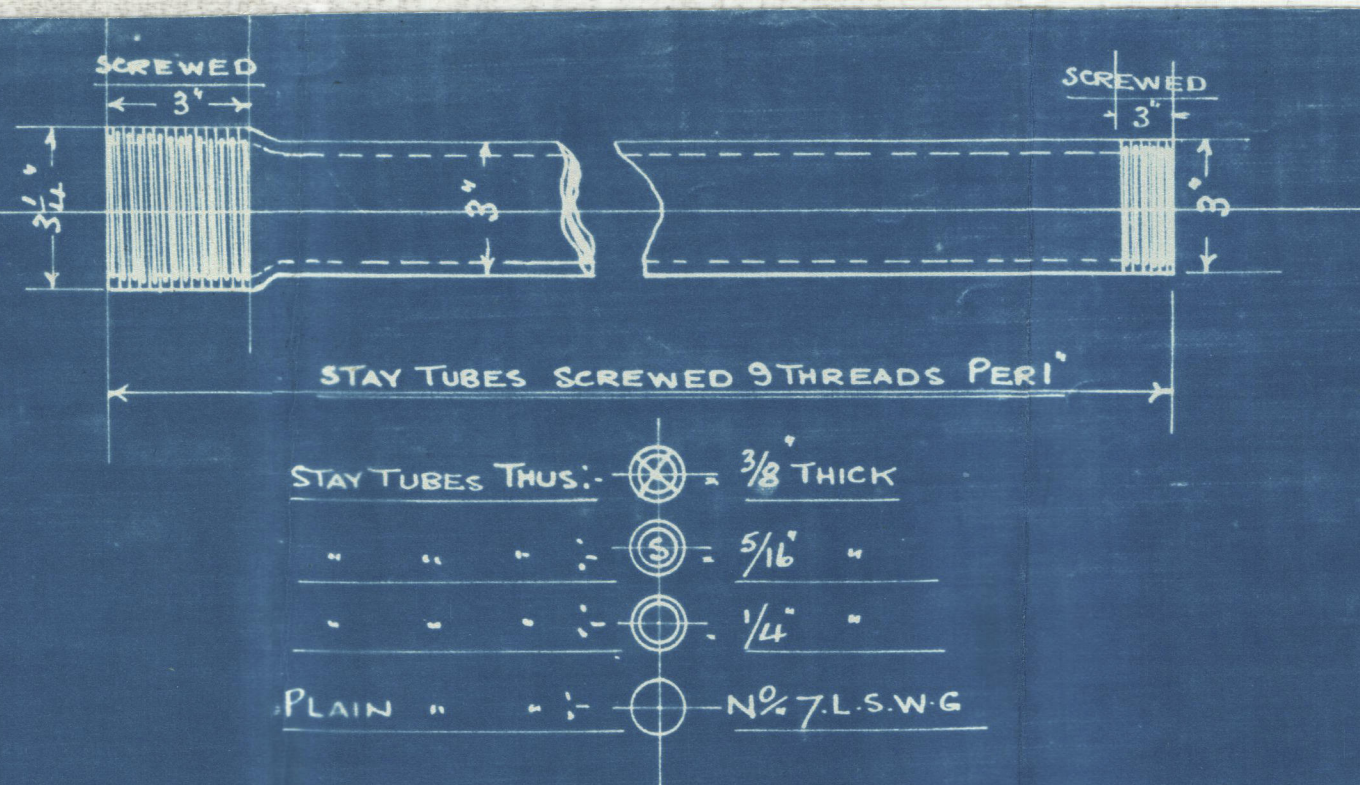


BOILERS NO 1211.

3 OFF FO

Approved of by Lloyds June 22nd 34 + Amen^d July 21st 34.

HEATING SURFACE ETC.	SQ. FT.
HEATING SURFACE IN ONE TUBE =	6.03
" " " 324 TUBES =	1954
" " " 3 C. CHAMBERS	248
" " " 3 FURNACES	147
" " " BACK TUBE PLATE	44
" " " FRONT	56
TOTAL " " ONE BOILER	2398
GRAND " " THREE	7199
TOTAL GRATE AREA WITH 5" BARS =	170
" AREA THRO' TUBES (3 BOILERS) =	3313
RATIO = $\frac{\text{TUBE AREA}}{\text{GRATE AREA}}$ =	2.18.
TOTAL STEAM SPACE TO 6" ABOVE LEVEL OF TUBES.	CUB. FT. 1686.



15 MAR 1938

WORKING PRESSURE = 22.0 LBS PER SQ INCH.

FITTED WITH FORCED DRAUGHT.

ALL PLATES, RIVETS AND STAYS OF STEEL

TEST PRESSURE = 38.0 LBS PER SQ INCH.

TENSILE STRENGTH OF SHELL PLATES + BUTTSTRAPS

TUBES OF SOLID DRAWN STEEL

GIRDERS.

OTHER PLATES, SCREW STAYS AND RIVETS

LONGITUDINAL STAYS.

ELONGATION OF SHELL PLATES, BUTTSTRAPS, GIRDERS AND LONGITUDINAL STAYS

OTHER

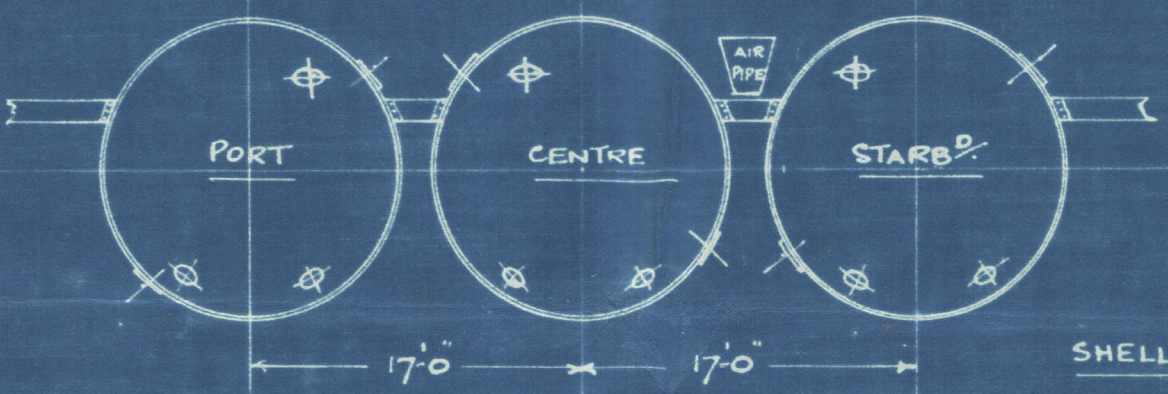
SCREW STAYS.

RIVETS.

SCALE 1" = 1 FOOT.

JUN 14th 37

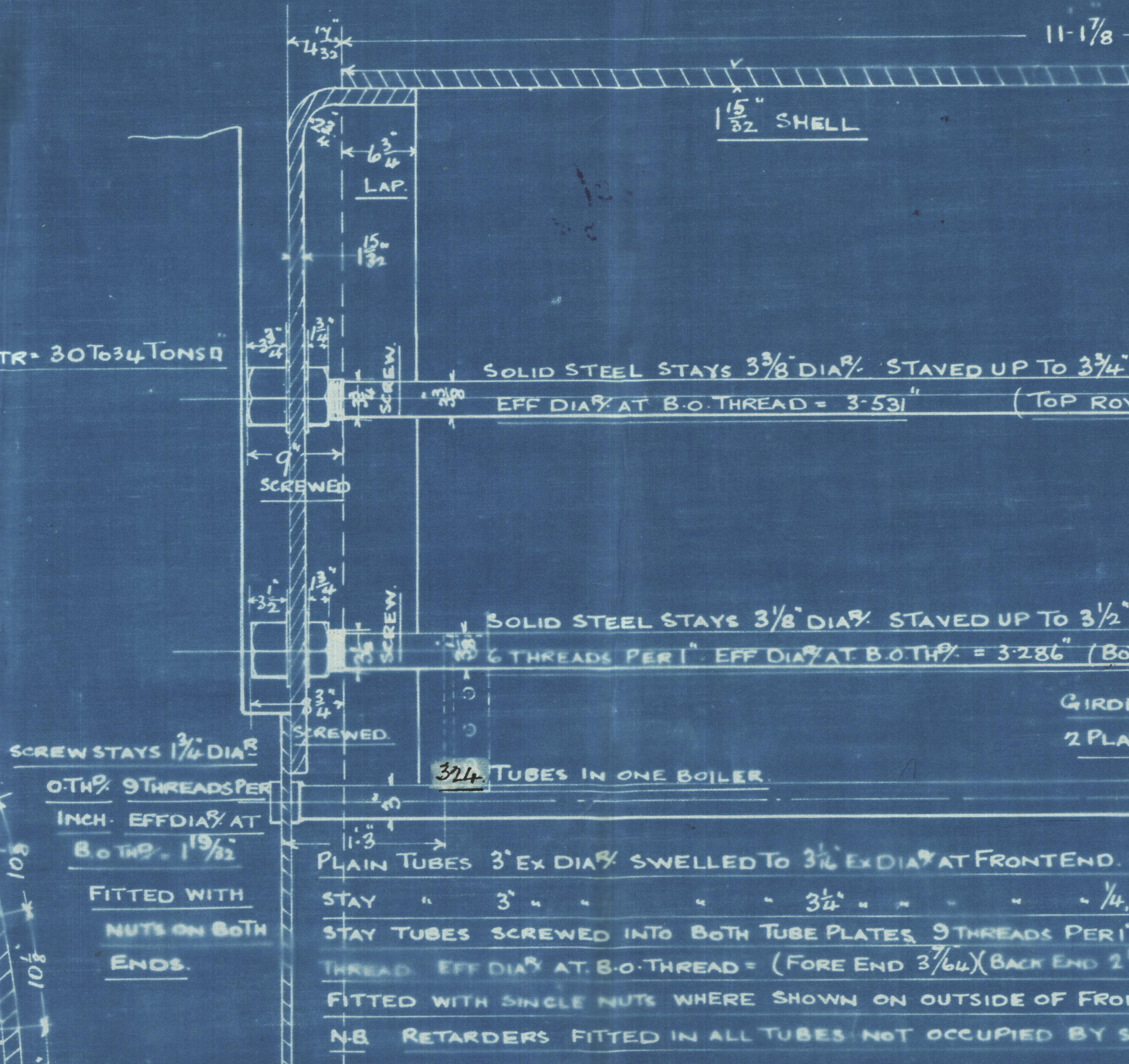
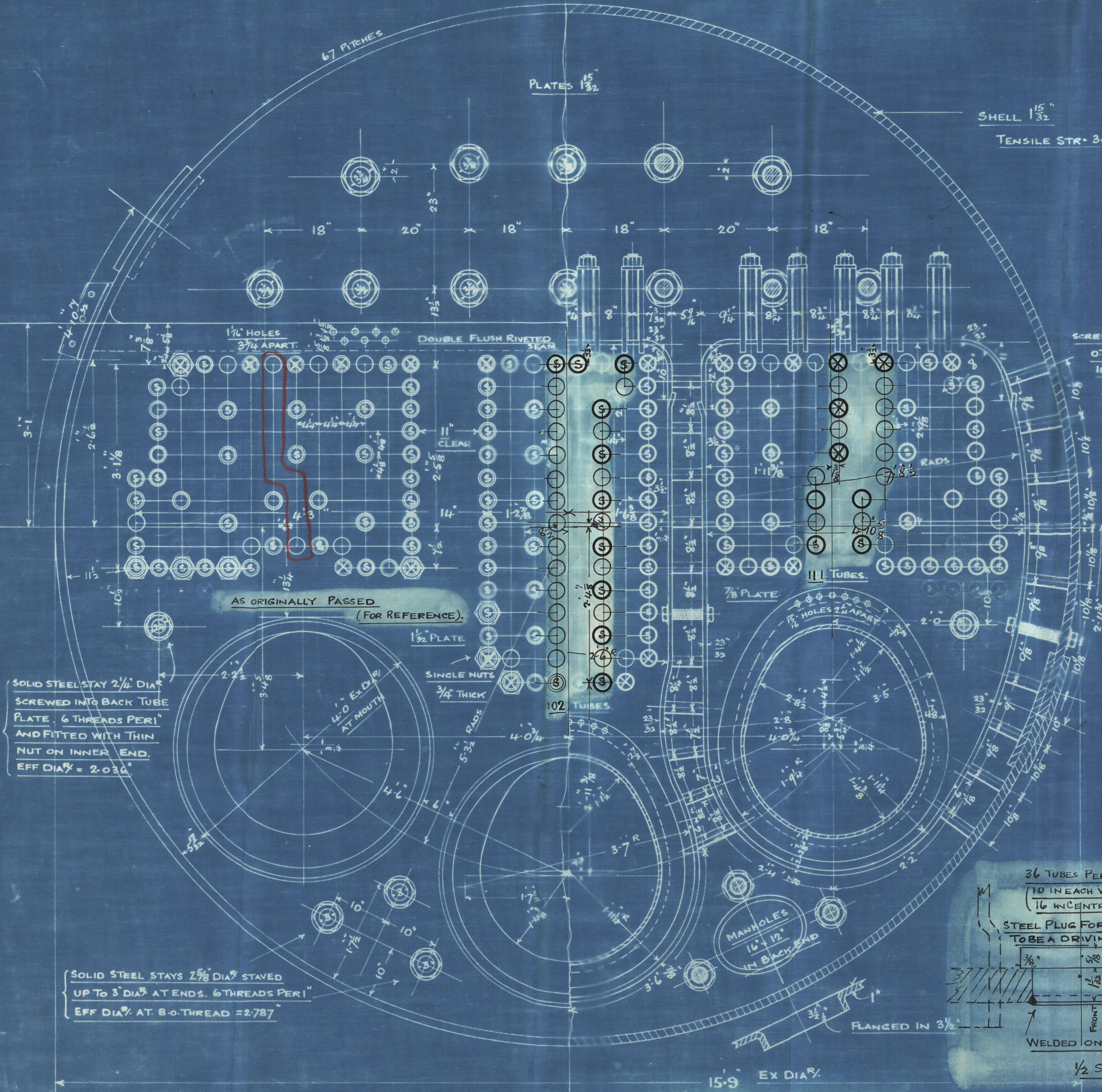
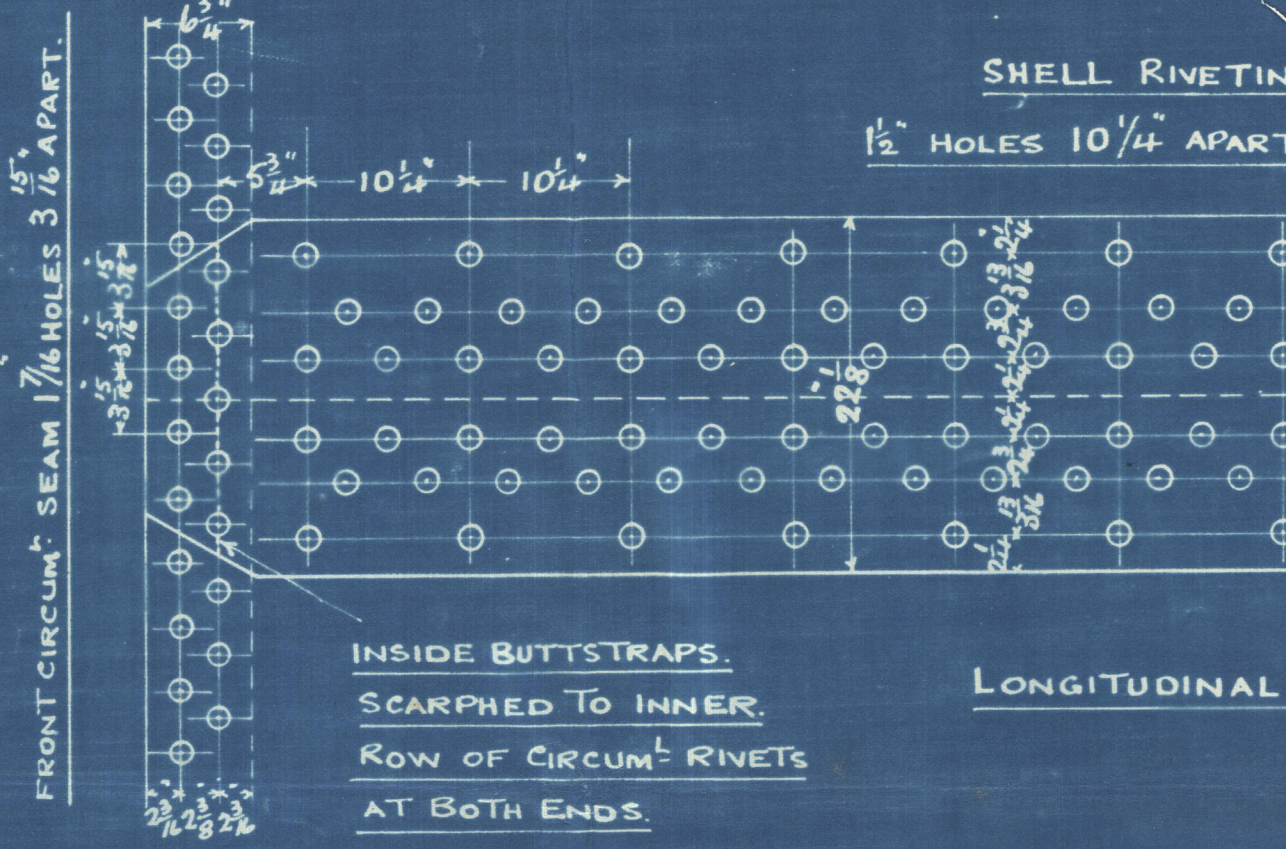
549. PLAIN TUBES 3" EX DIA SWELLED TO 3 1/4" EX DIA AT ONE END FOR 3" IN LENGTH 7-10 3/8 LONG. N 7 L.S.W.G. THK
 42. STAY " 3" " " " 3 1/4" " " " " 3" " 7-10 3/8 " 3/8" THICK
 312. " " 3" " " " 3 1/4" " " " " 3" " 7-10 3/8 " 5/16"
 39. " " 3" " " " 3 1/4" " " " " 3" " 7-10 3/8 " 1/4"
 STAY TUBES SCREWED 9 THREADS PER 1" CONTINUOUS THREAD FOR A DISTANCE OF 3" AT SWELLED END AND 1" AT THE OTHER
 48 STAY TUBE NUTS 3/4 THICK TO SUIT 3 1/4" EX DIA END OF STAY TUBES.



VIEW LOOKING ON BOILER BACKS SHOWING MANHOLES, ETC.

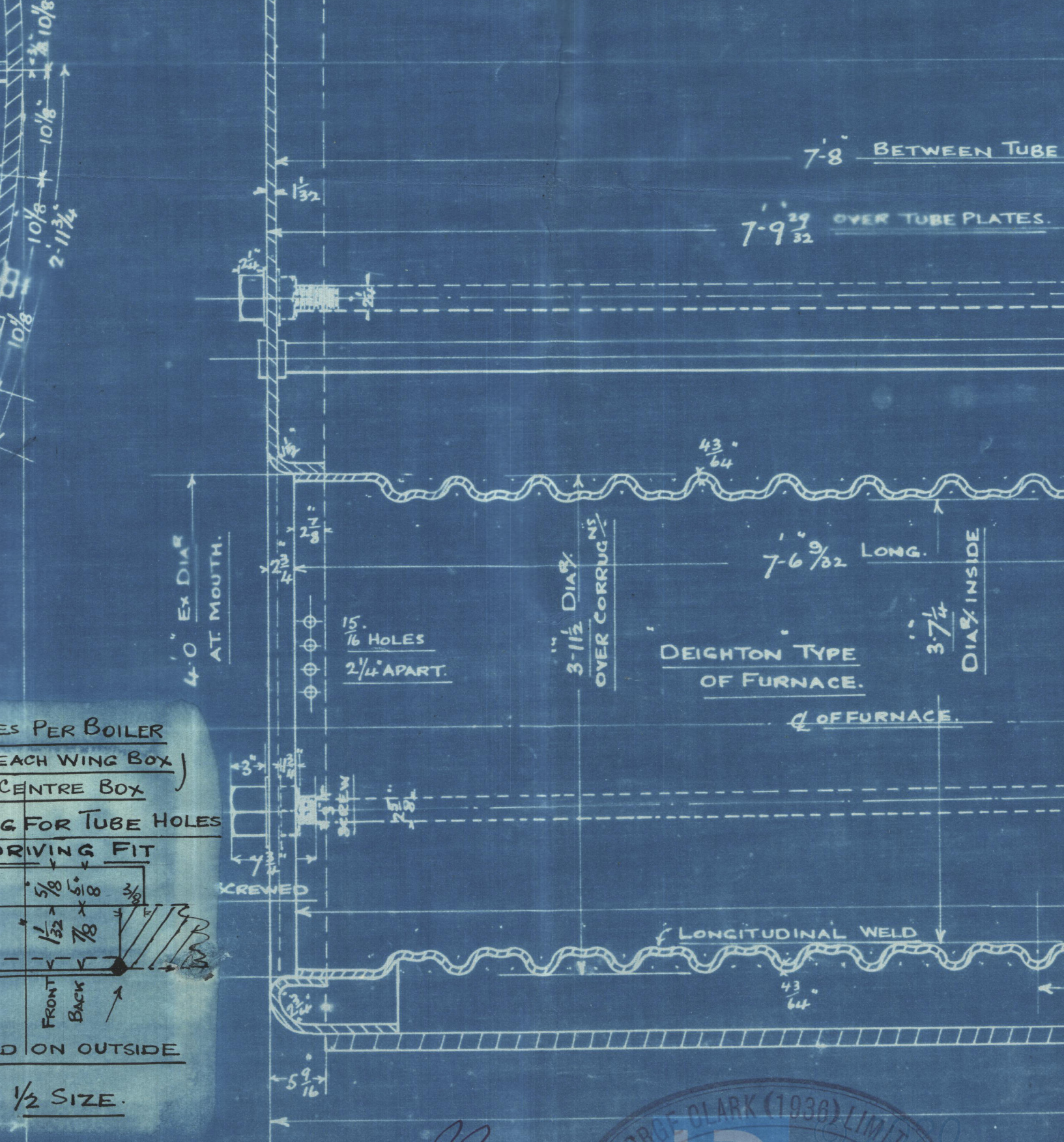
SHELL PLATING AS DRAWN FOR PORT AND STARB BOILERS TO OPPOSITE HAND FOR CENTRE BOILER.

SPARE GEAR.
 II. PLAIN TUBES.



SOLID STEEL STAY 2 1/4 DIA SCREWED INTO BACK TUBE PLATE. 6 THREADS PER 1" AND FITTED WITH THIN NUT ON INNER END. EFF DIA = 2.036

SOLID STEEL STAYS 2 5/8 DIA STAYED UP TO 3 DIA AT ENDS. 6 THREADS PER 1" EFF DIA AT B.O. THREAD = 2.787



DRG NO 178.

PROPOSED ALTERATION TO TUBES ETC.

MAR 7th 38

W/169-0020



Messrs. George Clark (1936) Ltd.,

Contract 1211

Sir J. Laing & Sons' Yard No. 721

BOILER.

Second Amendment.

SUNDERLAND RPT. NO. 32480

s.s. "Grayburn".

X1169-0020



© 2020

Lloyd's Register
Foundation