

27-77

S.S. No. 721 PROFILE

DIMENSIONS - 443'-6" B.P. x 63'-5" B.M.D. x 31'-0" D.M.D. 2nd DK & 39'-0" D.M.D. UPPER DK.

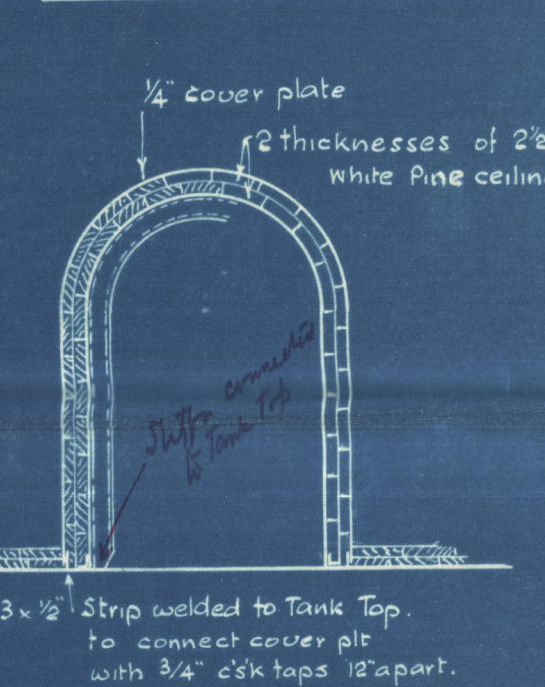
COMPLETE SUPERSTRUCTURE CLASS

Class - 100A LLOYDS

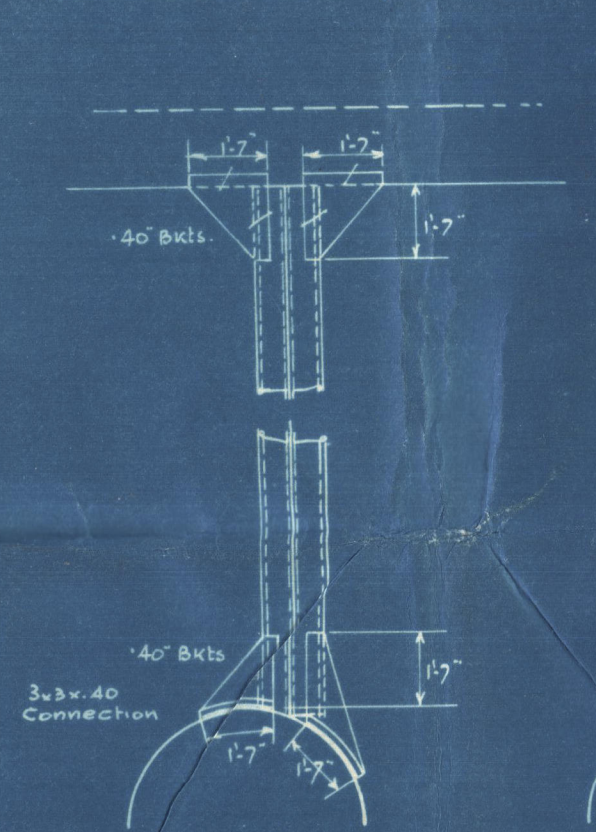
Scale 1/8" = 1' 0"

with a freedom corresponding to a draught not exceeding that contemplated by the Rules for a C.S.S. Vessel having a longitudinal framing at decks.

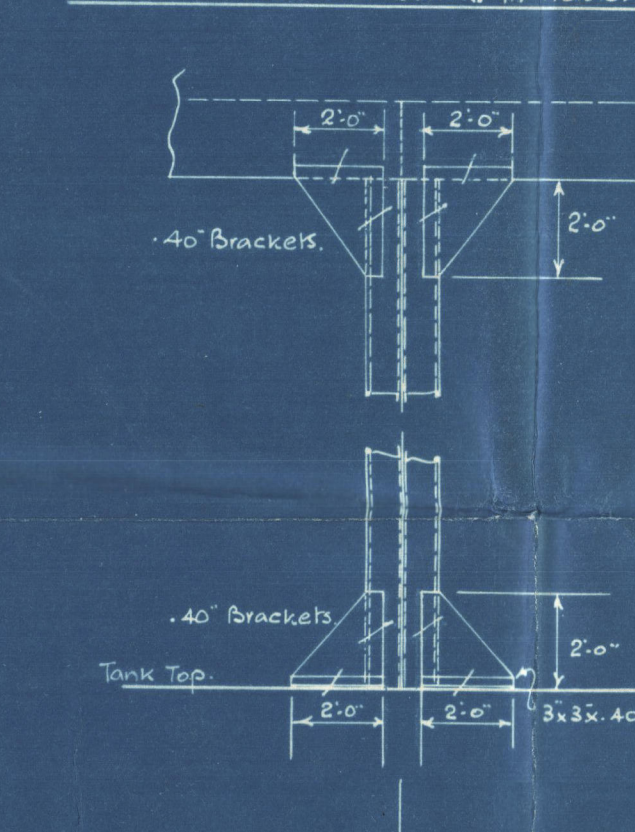
Section of tunnel in way of No 4 Hatch.



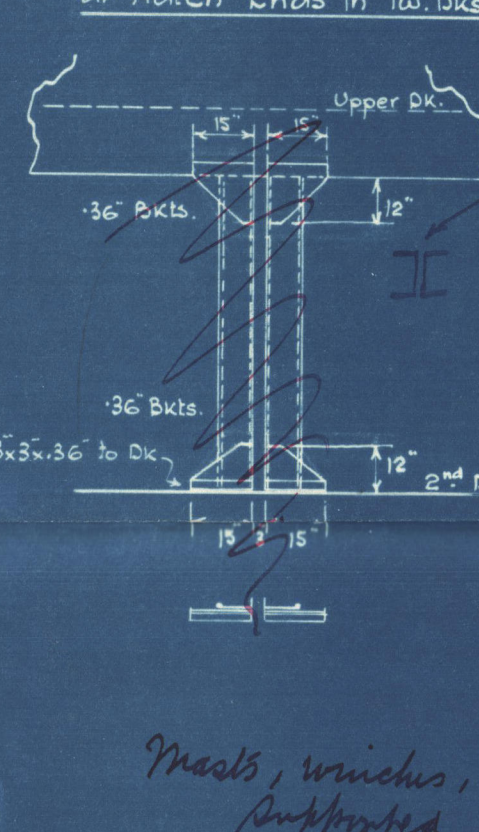
Section showing conn^o of C.L. Buld. Shifts at Hatch and Tunnel top.



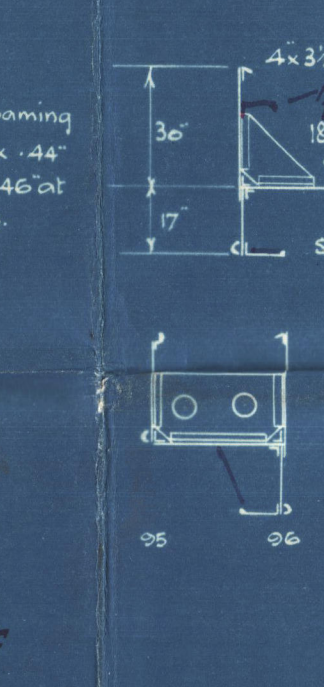
Section showing connection of C.L. Buld. Shifts at Hatch and beams in holds.



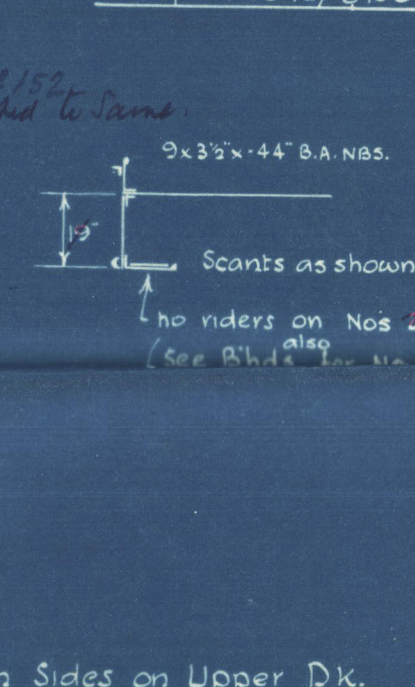
Section showing C.L. Pillars at Hatch Ends in Two Decks.



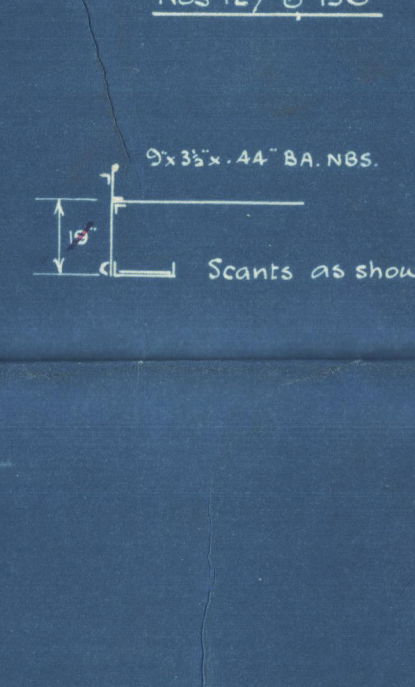
Hatch Ends on Upper Dk. (except Nos. 95 & 96)



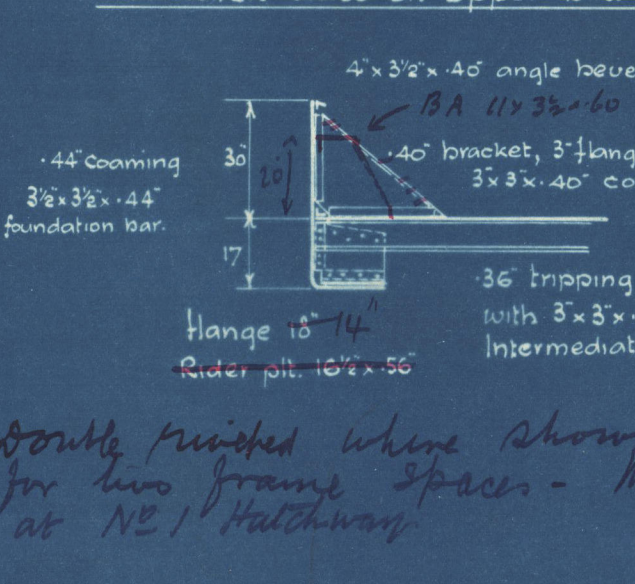
Hatch Ends on 2nd Dk. (except Nos. 107 & 136)



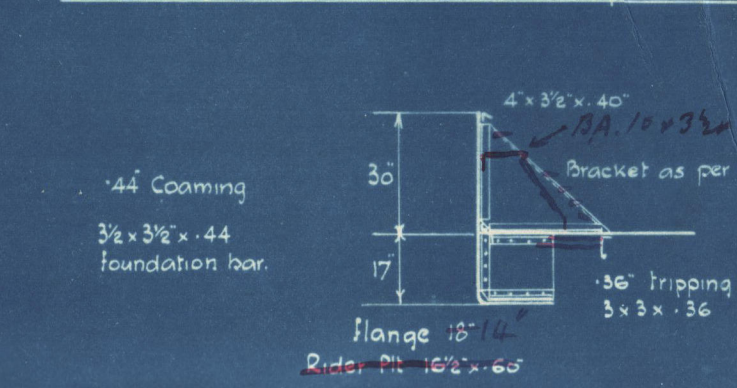
Hatch Ends on 2nd Dk. (Nos. 107 & 136)



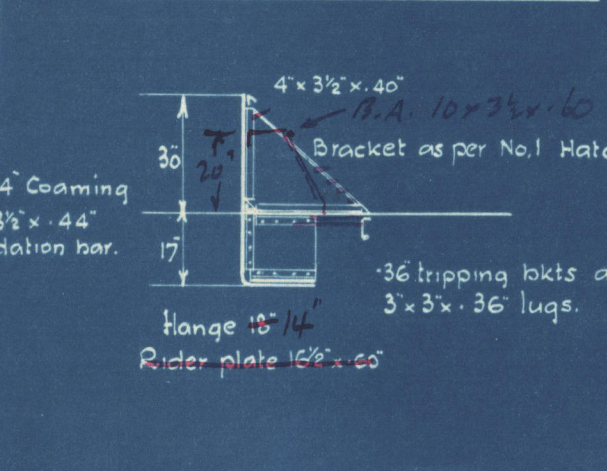
No 1 Hatch Sides on Upper Dk.



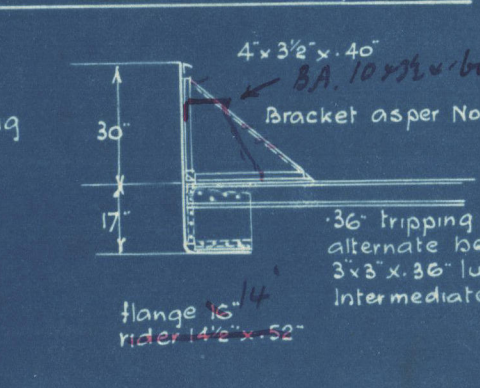
Bunker & No 3 Hatch Sides on Upper Deck



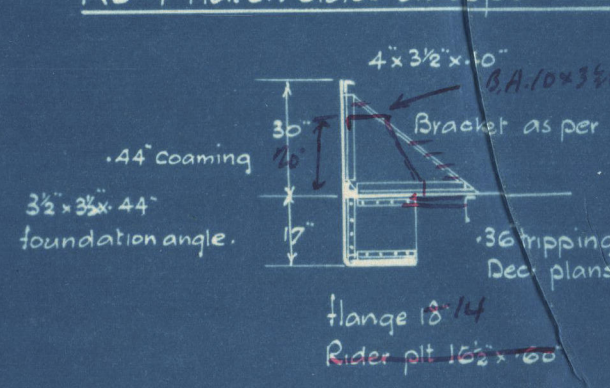
No 2 Hatch Sides on Upper Dk.



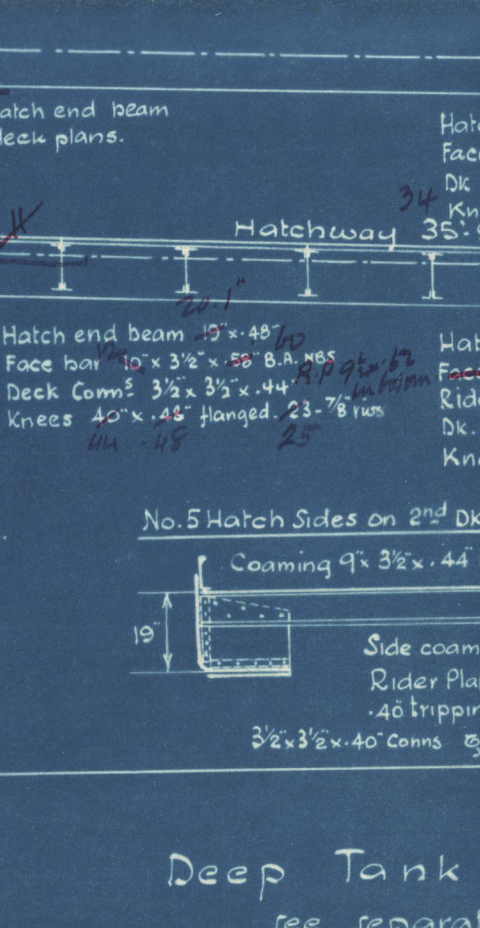
No 5 Hatch Sides on Upper Deck



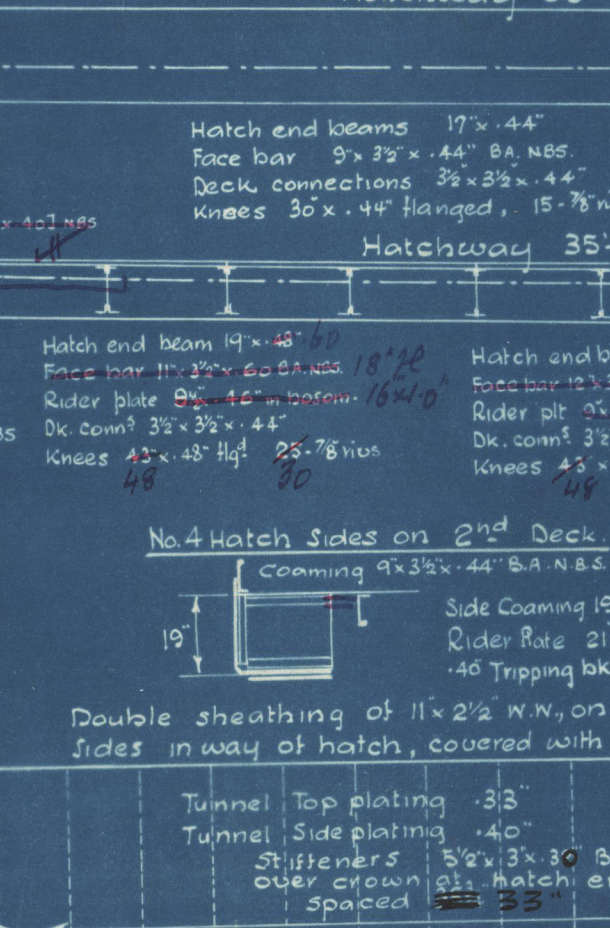
No 4 Hatch Sides on Upper Deck



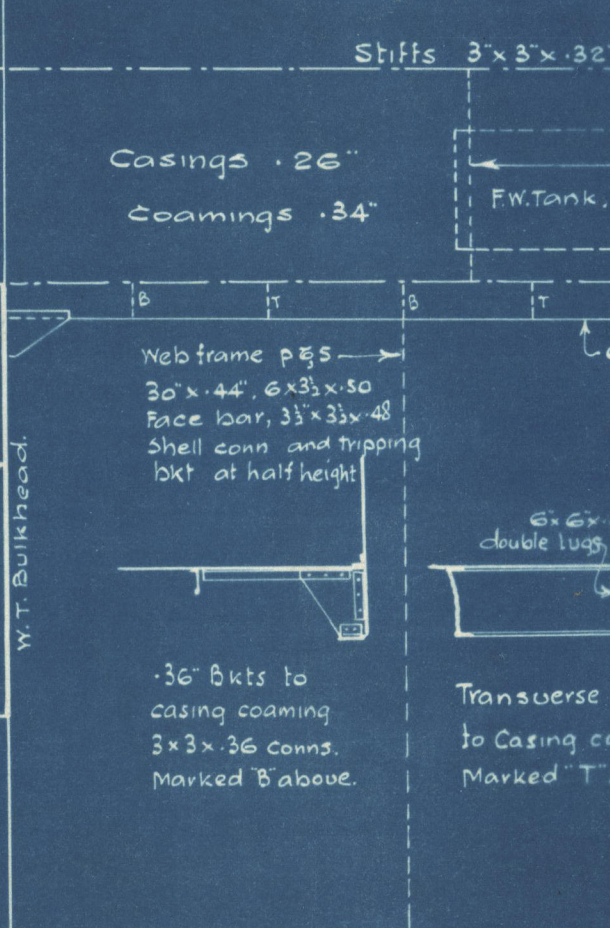
Hatchway 35'-0" x 32'-0"



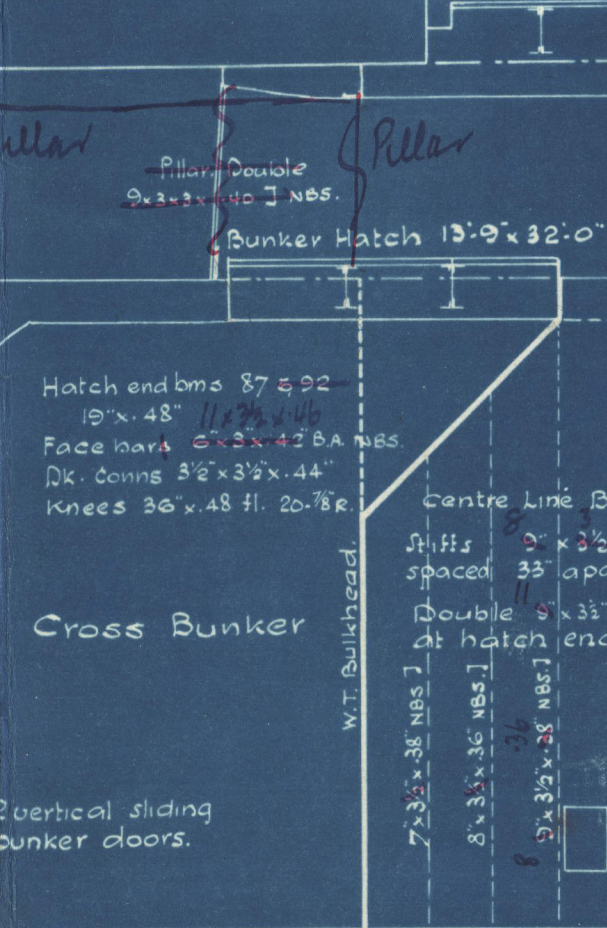
Hatchway 35'-0" x 32'-0"



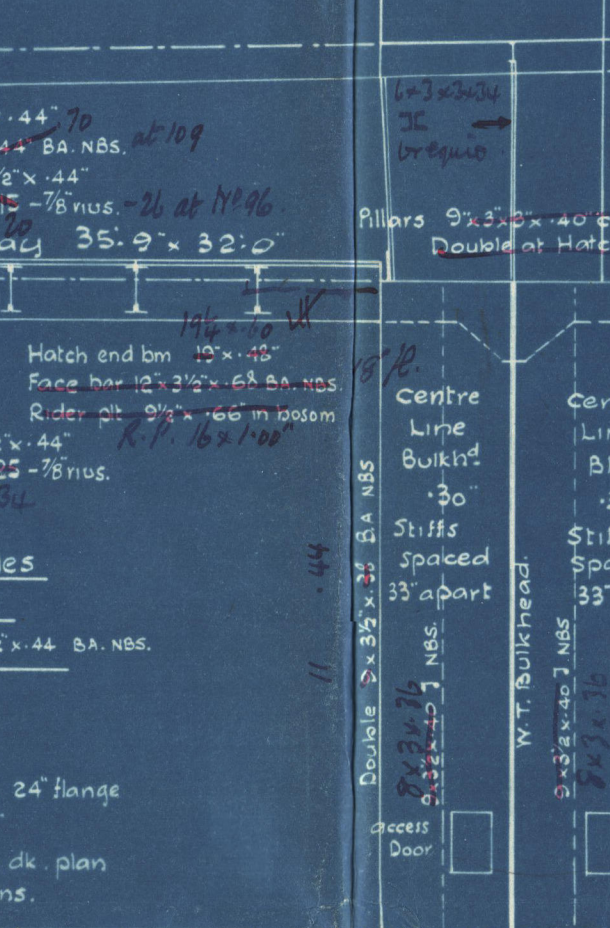
Hatchway 35'-0" x 32'-0"



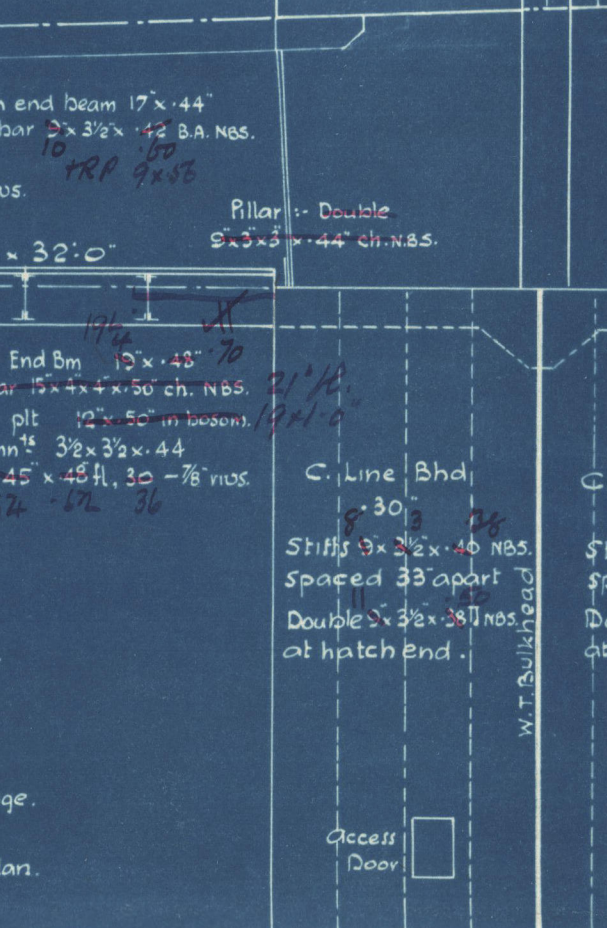
Hatchway 35'-0" x 32'-0"



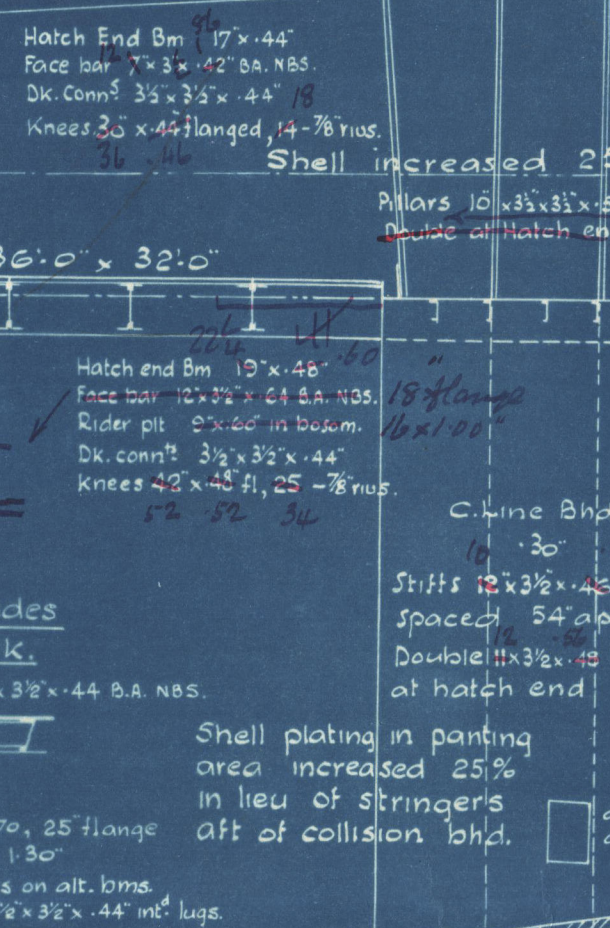
Hatchway 35'-0" x 32'-0"



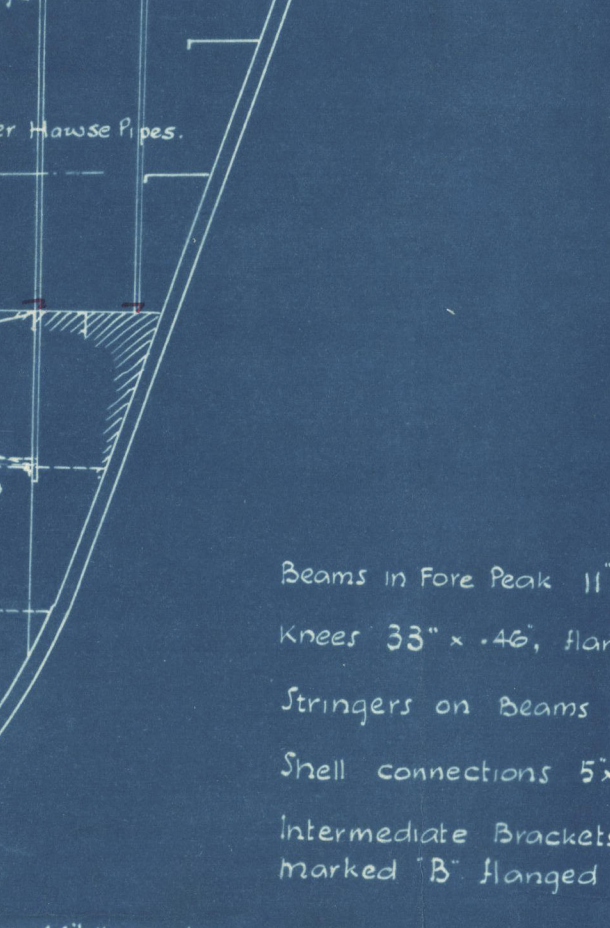
Hatchway 35'-0" x 32'-0"



Hatchway 35'-0" x 32'-0"



Hatchway 35'-0" x 32'-0"



Beams in Fore Peak 11'-0" x 4'-0" BA NBS
Knees 33" x 4'-0" Flanged
Stringers on Beams 33" x 3'-0"
Shell connections 5'-0" x 3'-0"
Intermediate Brackets 19" x 2'-0" where marked 'B' flanged to stringer.

SUNDERLAND.

Messrs. Sir J. Laing & Sons, Ltd.,

Yard No 721,

PROFILE.



"Grayburn"
Sunderland Rpt. No. 32480.

W169-0016



© 2020

Lloyd's Register
Foundation