

TWIN SCREW NORTH ATLANTIC STEAMER

Nº 528-9

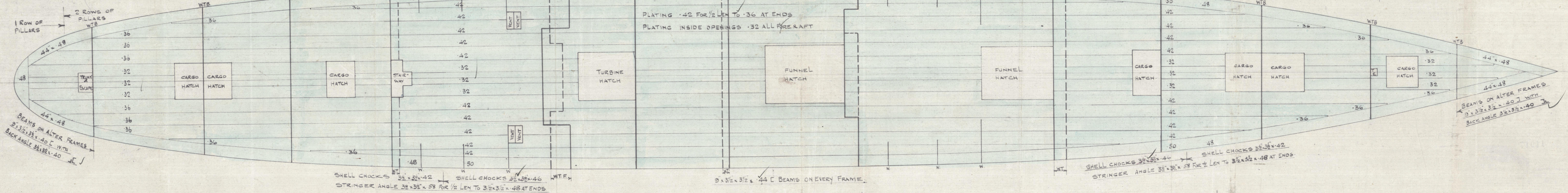
DIMENSIONS 644'-0" ON LWL x 77'-6" x 53'-6"

TO CLASS 100 A-1 AT LLOYDS WITH FREEBOARD

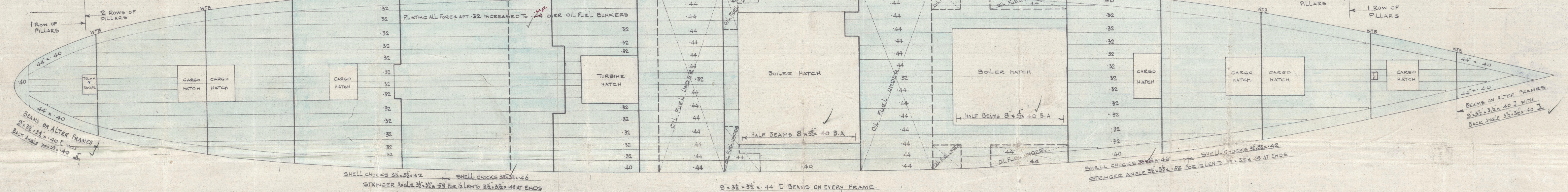
SCALE 1/16" = 1 FOOT.

17-1-18.

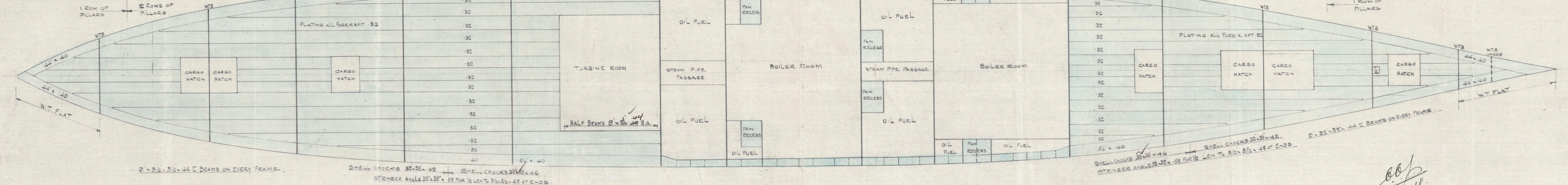
UPPER DECK



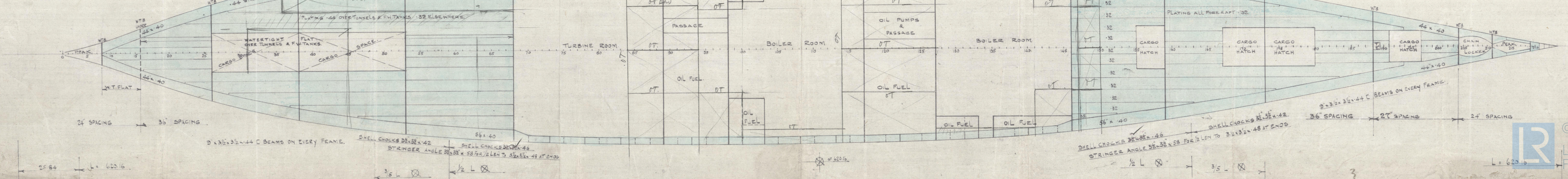
MAIN DECK



LOWER DECK



ORLOP DECK



BUILDERS. *The Fairfield Ship & Eng Co*

YARD No. 528 & 529

PLAN. *Decks*



SHIP'S NAME,

GLASGOW REPORT No. 41917

"Empress of Canada"

GLASGOW REPORT No. 41917



noted



T.S.S. "Empress of Canada"
Chs. Rtd. Report No. 44140.

W166-0038



© 2020

Lloyd's Register
Foundation