

Main Boilers
Central Marine
Engine Works.

West Hartlepool

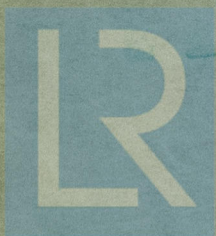
Blk No. R. 135. 6. 77

Hpl. Reports No.

12833 12837 12838

S.S. "Amies"

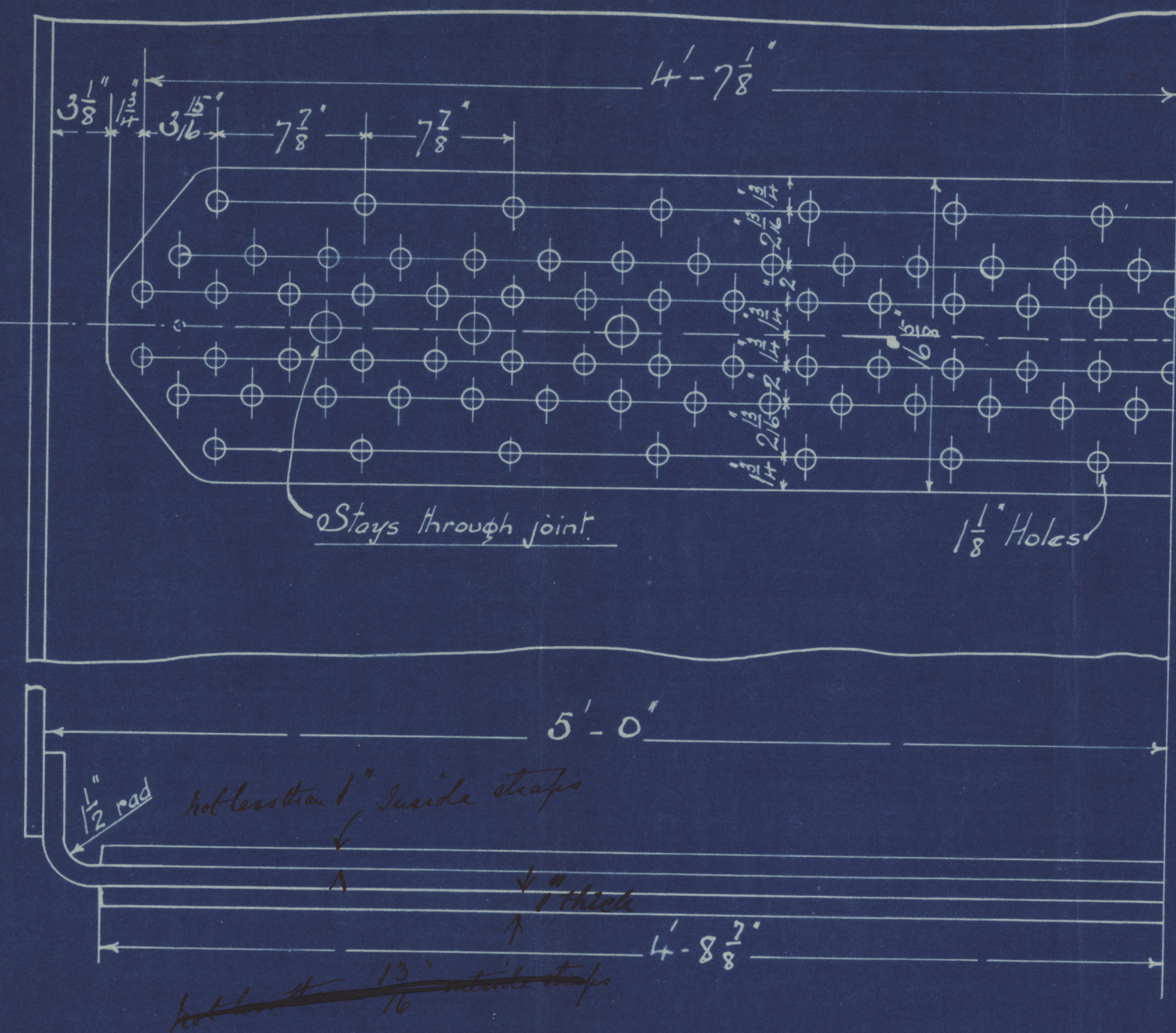
Hul. 17834



© 2019

Lloyd's Register
Foundation

W1654-0113



13-10-05

BOILER NOS R135.136.137.

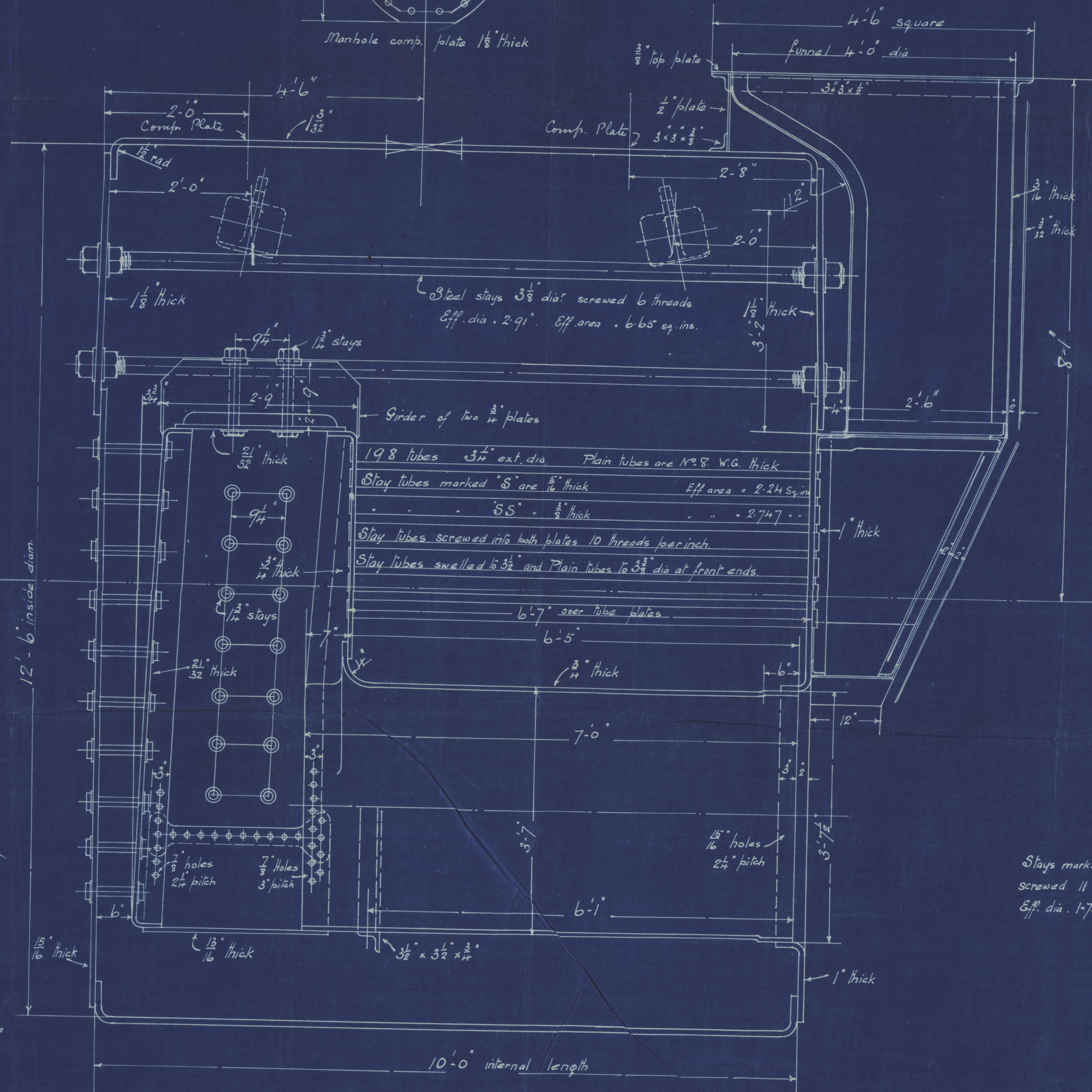
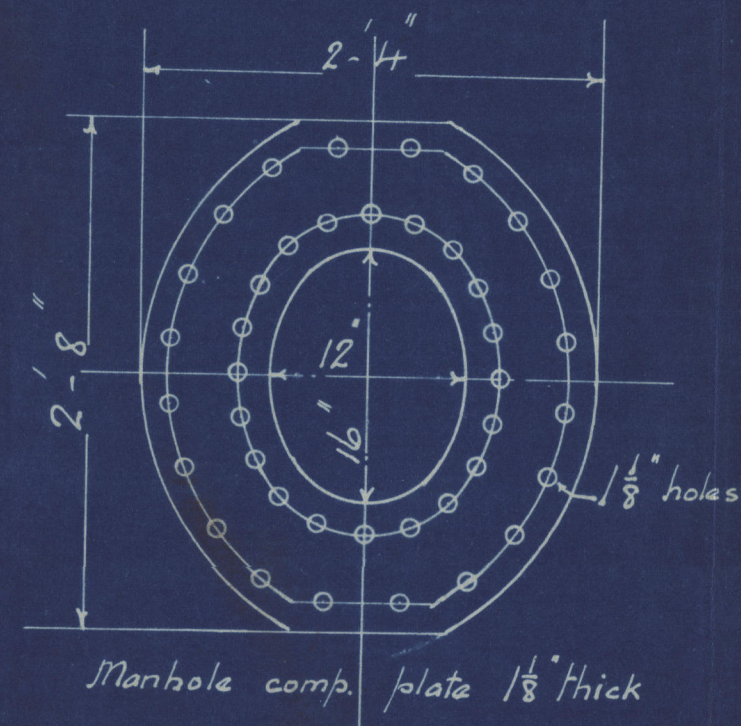
WORKING PRESS 180 LBS TO LLOYDS'

Scale 1" = 1 Foot.

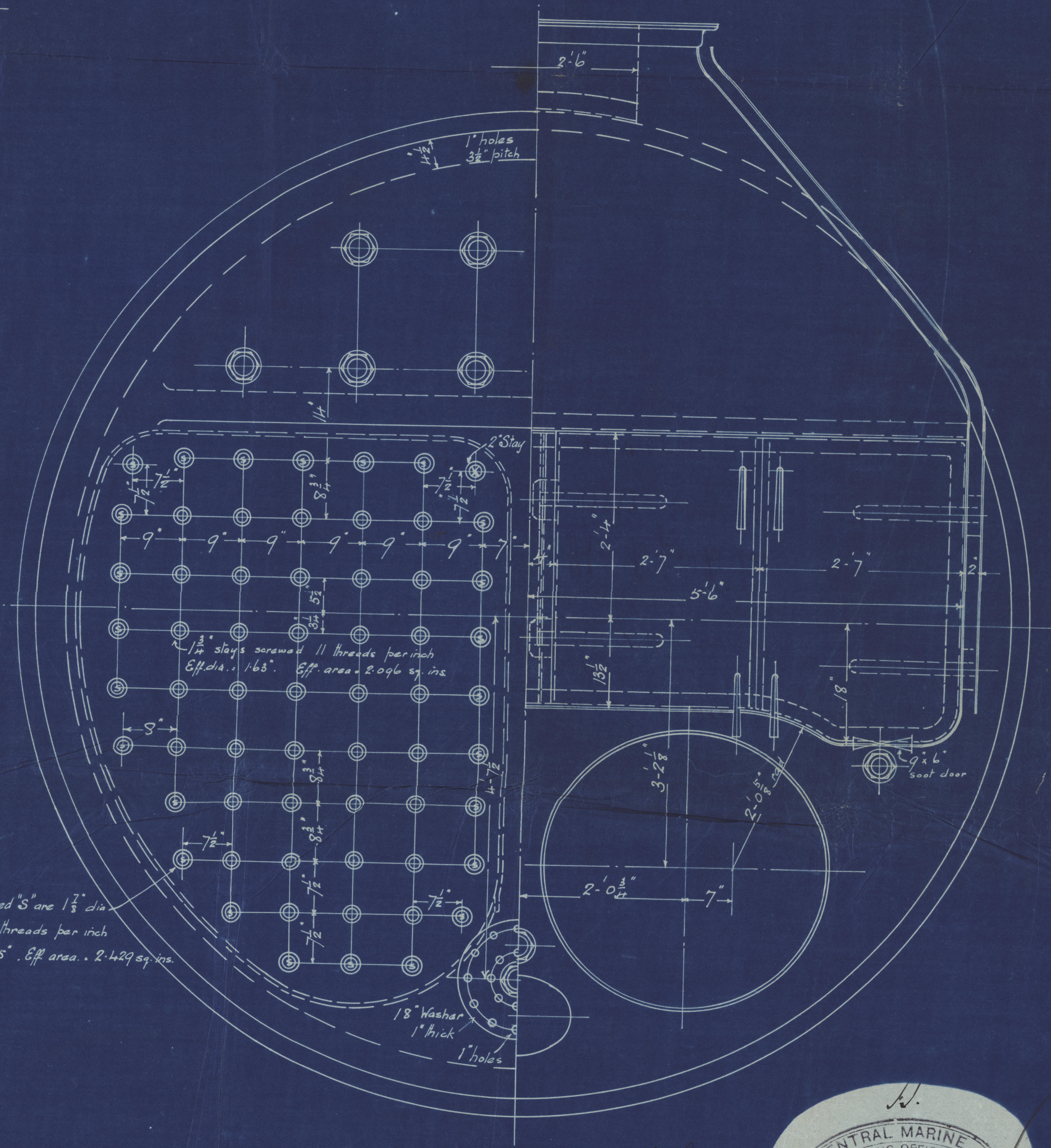
1 Boiler to each No

Shell plates to have a tensile strength of 27 to 30 tons
 Butt Straps " " " " 27 to 32 tons
 Main Stays " " " " 27 to 32 tons
 Other plates & bars " " " " 26 to 30 tons

Heating Surface = 1319 sq ft
 Grate Surface = 34.7 sq ft



Stays marked S are 1 1/2" dia.
 screwed 11 threads per inch
 Eff. dia. 1-75". Eff. area 2-429 sq. ins.



R135.136.137.

12-10-05

