

NEWCASTLE, 27, WESTGATE ROAD.
LONDON, VICTORIA MANSIONS,
32, VICTORIA ST (THIRD FLOOR)
GLASGOW, 11, BOTHWELL ST

Newburn Steel Works. C1351
Newcastle-on-Tyne, Jan 20 1906

Thos. Bewn & Co. Marine & Eng. Works.
Westgate St. Newcastle-on-Tyne.

To John Spencer & Sons, Limited,
Steel Manufacturers.

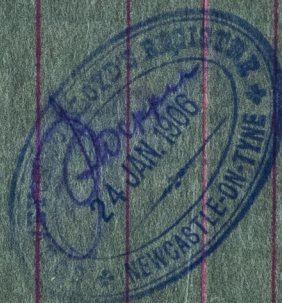
ROLLING MILLS DEPT

BOILER
L. S. D.

WAGON NO	MARK	NO OF SHIP OR BOILER	NUMBER OF PLATES	LENGTH	BREADTH	THICKNESS	CONSECUTIVE No	CAST NO	TONS. CWT.	QRS.	LBS.	PRICE
----------	------	-------------------------	---------------------	--------	---------	-----------	-------------------	---------	------------	------	------	-------

G. 1137	2 1/2	9 1/4	9 1/4	2 1/2	9 1/4	9 1/4	2 1/2	9 1/4	2 1/2	9 1/4	9 1/4	2 1/2
---------	-------	-------	-------	-------	-------	-------	-------	-------	-------	-------	-------	-------

20 to 50 Cwt.



© 2019

Lloyd's Register
Foundation

W 654-0101