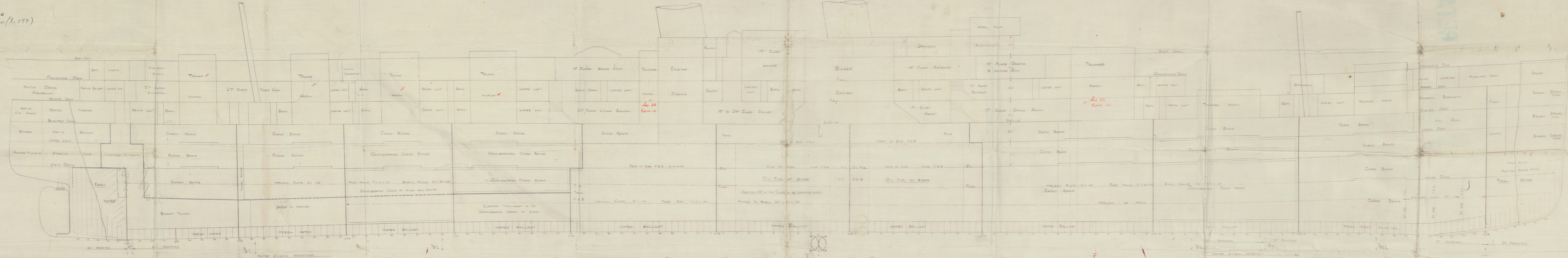
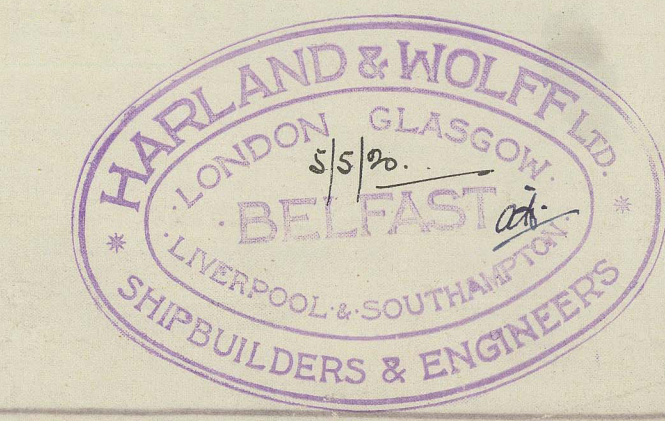


11.5.20
8.11.20 (No 588)

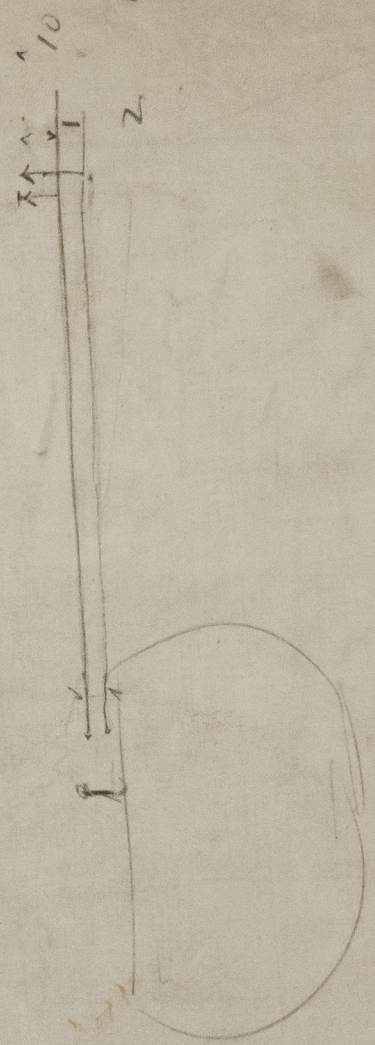


LONGITUDINAL ELEVATION
S. S. N° 587- 600'-73'-44' K. to B.
Scale 1/8" = 10' 100'

10 CLASS AT LLOYDS 100 A.I.



20



Harland & Wolff Ltd.

N° 587.48

Profile - amended

"Mooltan"
Bel 8970.

"Malaja"
Bel 8986

list
89B

DI. E.

RETAIN

© 2021

Lloyd's Register

W1650-0388