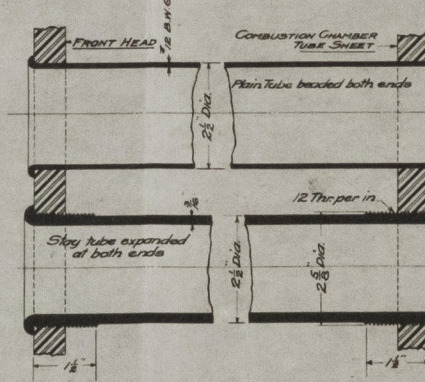
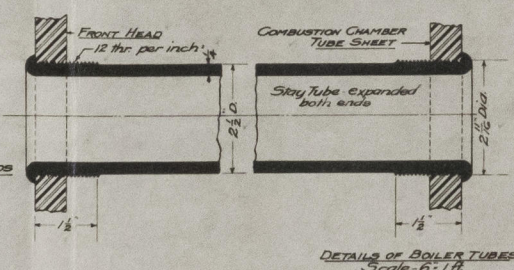
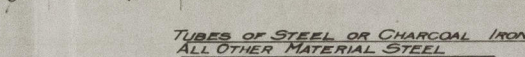
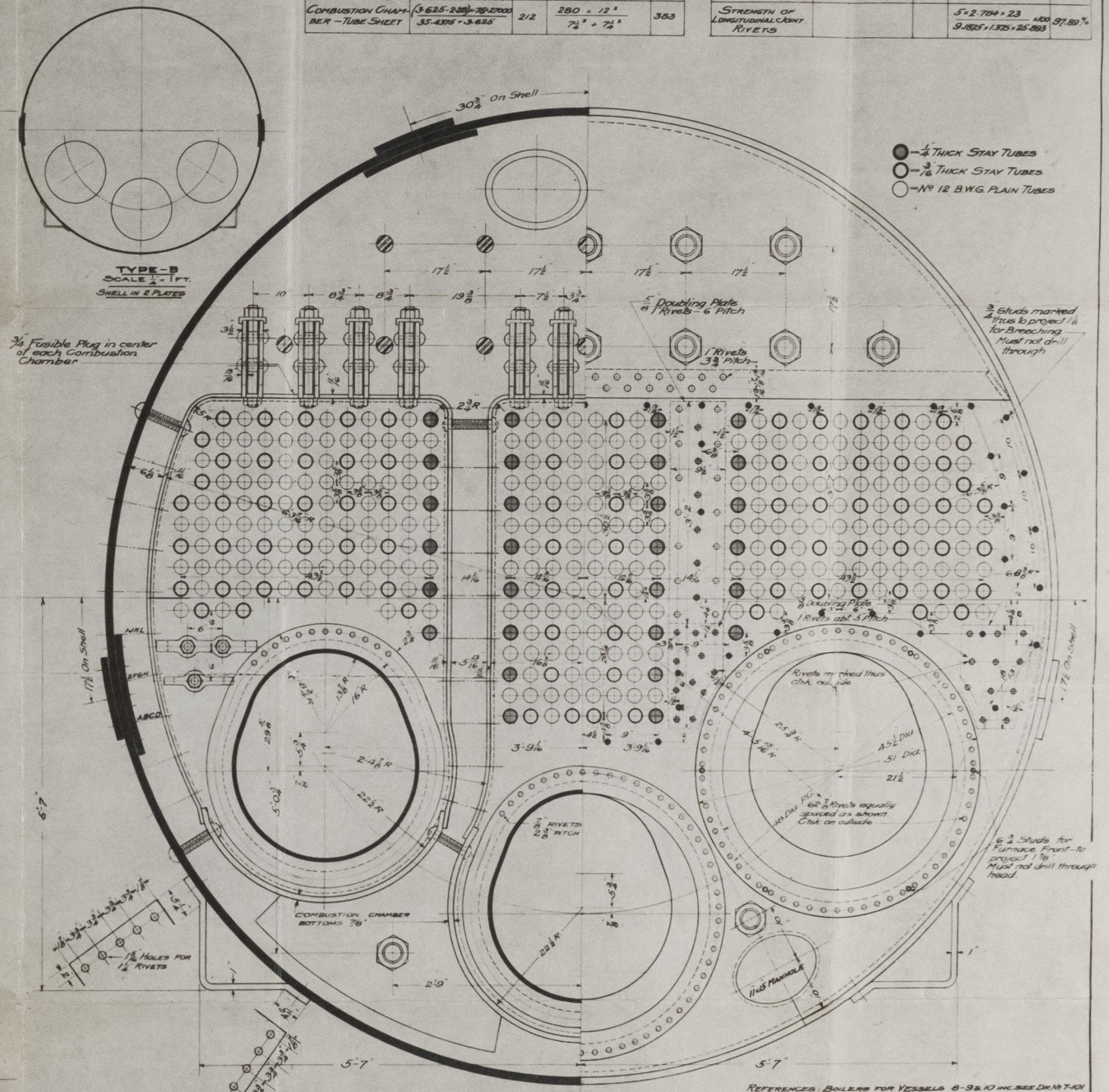
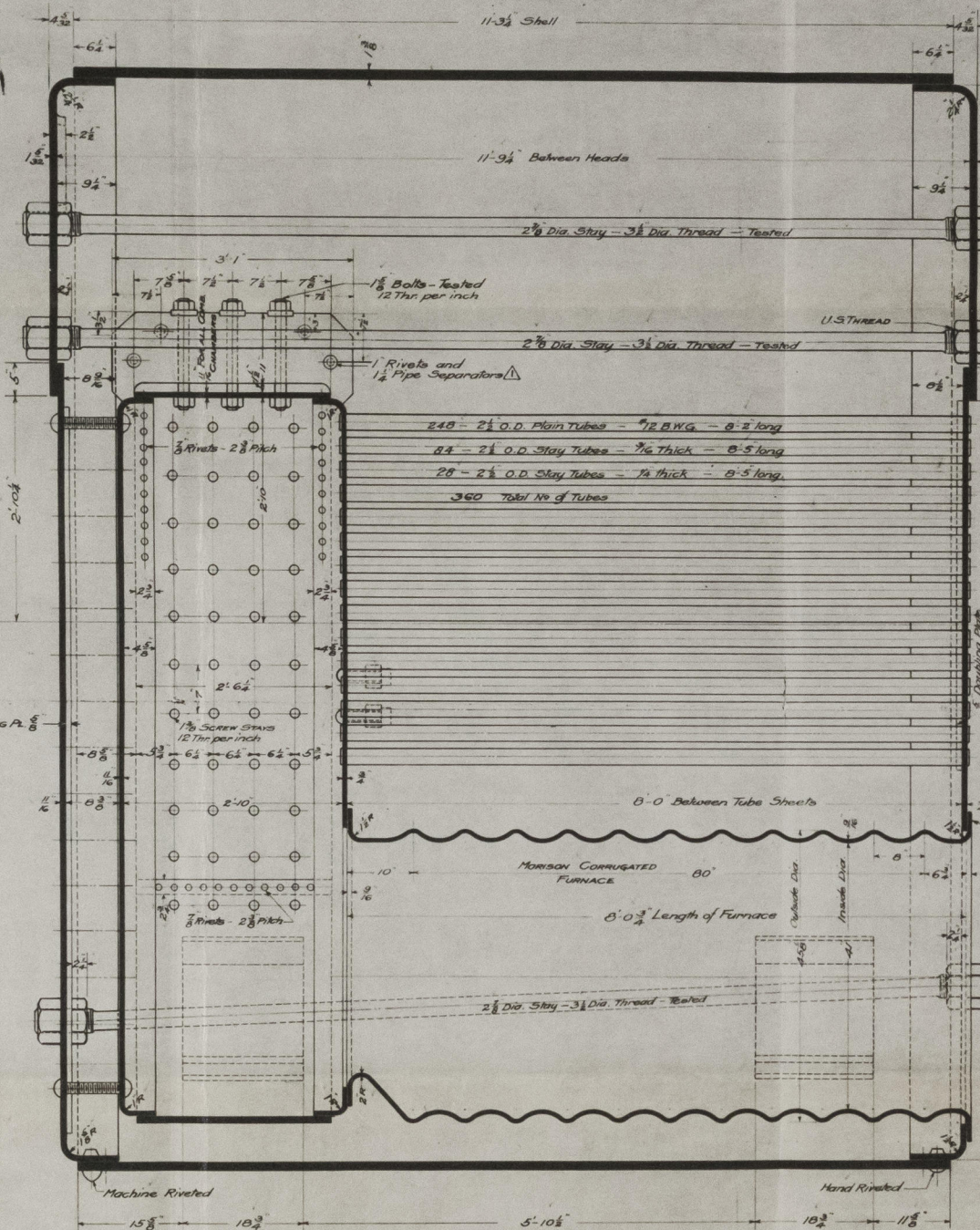


U. S. RULES		AMERICAN BUREAU	
PART	W.P.	PART	W.P.
TUBE SHEET FRONT HEAD	$\frac{100 \times (24.8 \times 10^{-3})^2}{24.8 \times 10^{-3} - \frac{1}{2}}$	240	$\frac{200 \times (12 \times 10^{-3})^2}{14.8 \times 10^{-3} - \frac{1}{2}}$ 231
CROWN SHEET	$\frac{135 \times 11.8}{101 \times 12.5}$	209	$\frac{170 \times 11.8}{10 \times 12.5}$ 208
COMBUSTION CHAMBER-FLAME SHEET	$\frac{101 \times 11.8}{7 \times 24.8 \times 10^{-3}}$	271	$\frac{200 \times 11.8}{7.8 \times 10^{-3}}$ 226
CROWN BARS	$\frac{93.5 \times 11.8 \times \frac{1}{8}}{(31.6 \times 10^{-3}) \times 101.9}$	133.5	$\frac{4500 \times 11.8 \times \frac{1}{8}}{10 \times 135 \times 10^{-3}}$ 227
MAIN STAYS	$\frac{6 \times 398 \times 9000}{316 \times 2.8}$	190.7	$\frac{9300 \times (2.8 \times \frac{1}{8})}{316 \times 2.8}$ 212.7
STRENGTH OF LONGITUDINAL JOINT, PLATE	$3.1875 - 1.375$ 9.1875		4.100 85.03%
STRENGTH OF LONGITUDINAL JOINT, RIVETS	$5 \times 2.794 \times 23$ $5.927 \times 1.375 \times 25 \times 93$		97.80%

[illegible]

NOTE - All screw stays to be riveted except where otherwise marked.
Stays marked thus () to have half-high nuts on outside.
Stays to have ends and drilled with the hole to at least 1/8 beyond inside surface of plate.
Bolters to meet the requirements of the American Bureau of Shipping and U.S. Steamboat Inspection Service for a working pressure of 150 lbs. per square inch.
Tensile strength of shell 50,000 lbs. per sq. in. shell stays 55,000 lbs. per sq. in.

Heating Surface :
Tubes 1003 sq. ft.
Furnaces 169 - (For Coal)
Combustion Chambers
Total 2277 sq. ft.

Grate surface with 5'6" grate bars - 56.37 sq. ft.
Heating Surface Ratio - Grate Area 40.4

All types of heated material.
Through kilns - T.S. 50,000 to 73,000
Screwed kilns - T.S. 54,000 to 67,000

Am.
U.S.
U.S.

Bangu

(Beryly) Similar.

[illegible]

7

Boiler

EMPIRE ANTELOPE (Sunk) MS.
EMPIRE GAZELLE (now Inchmay)

South Marine Boilers

Emhire Antelope
Boiler

W1649-0014

