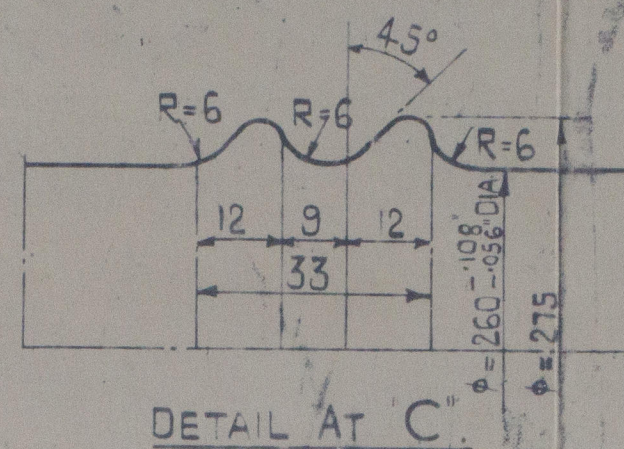
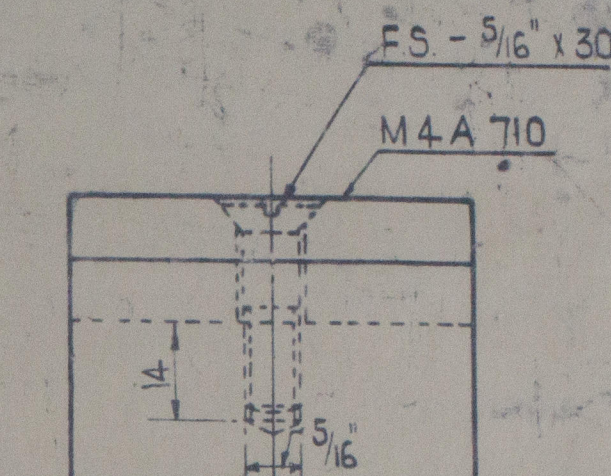


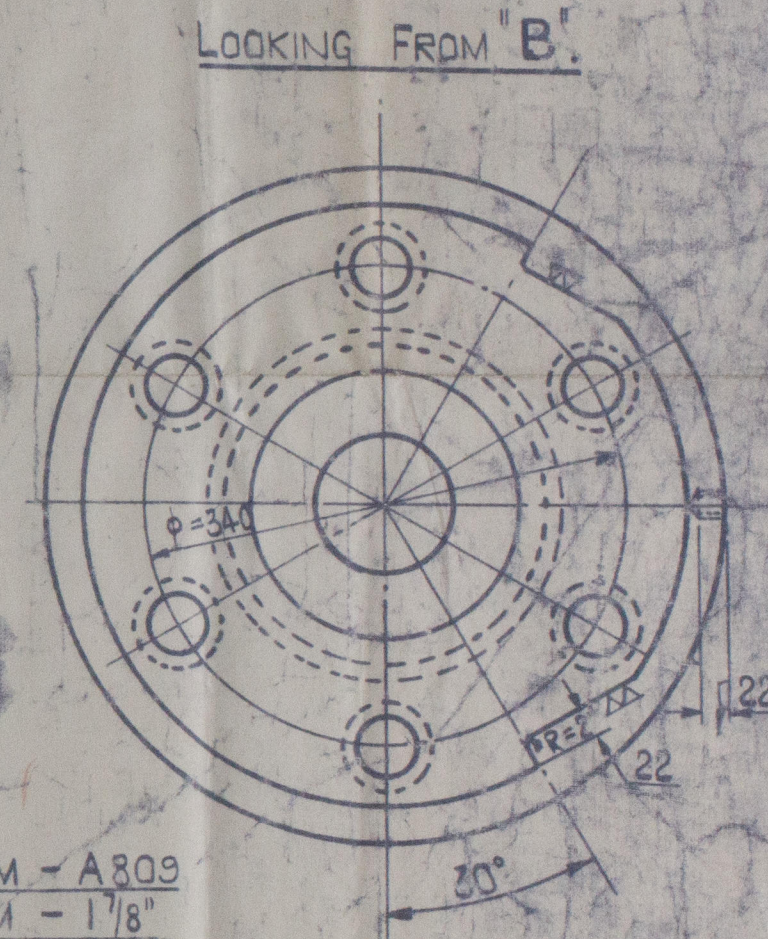
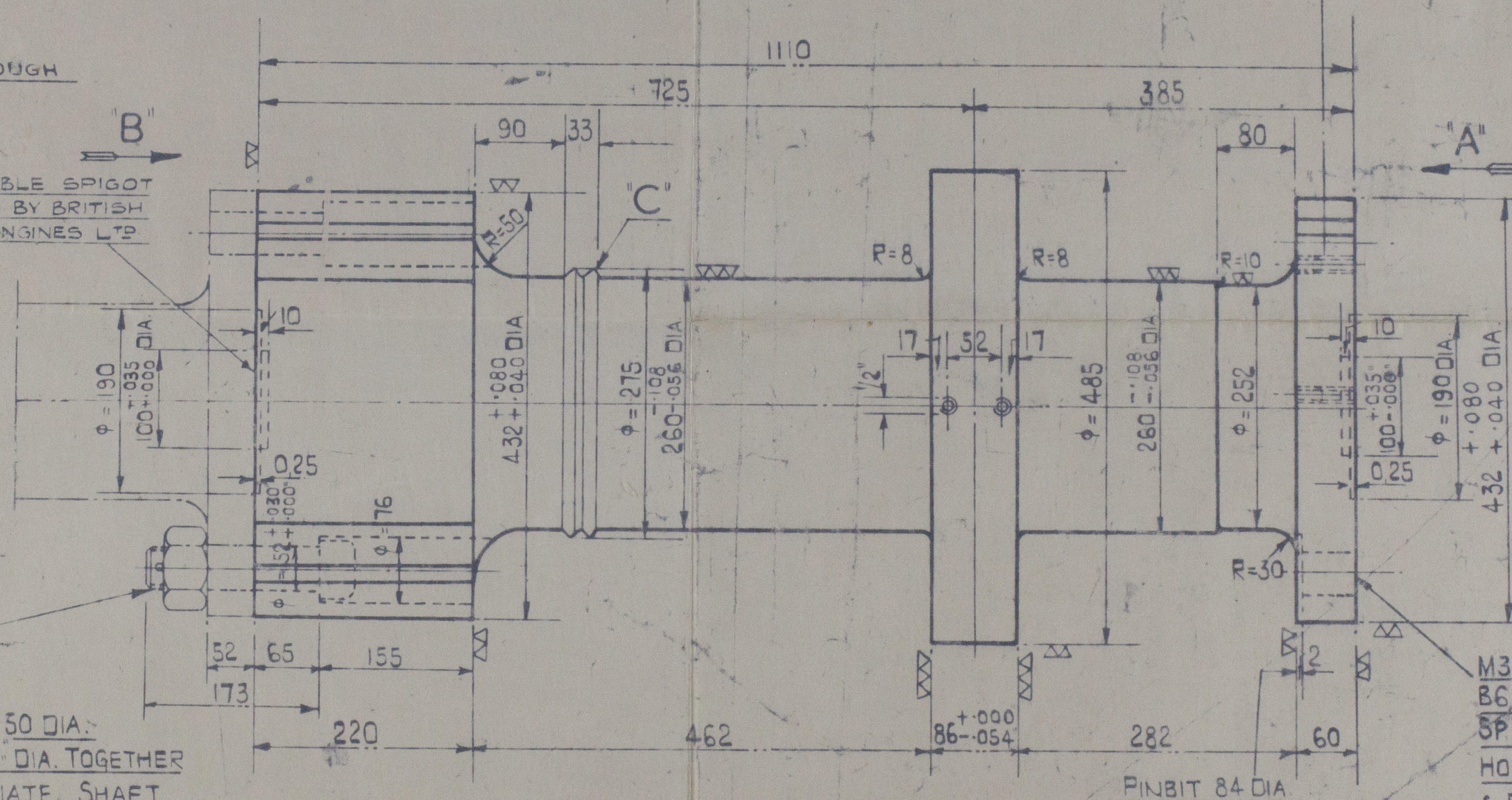
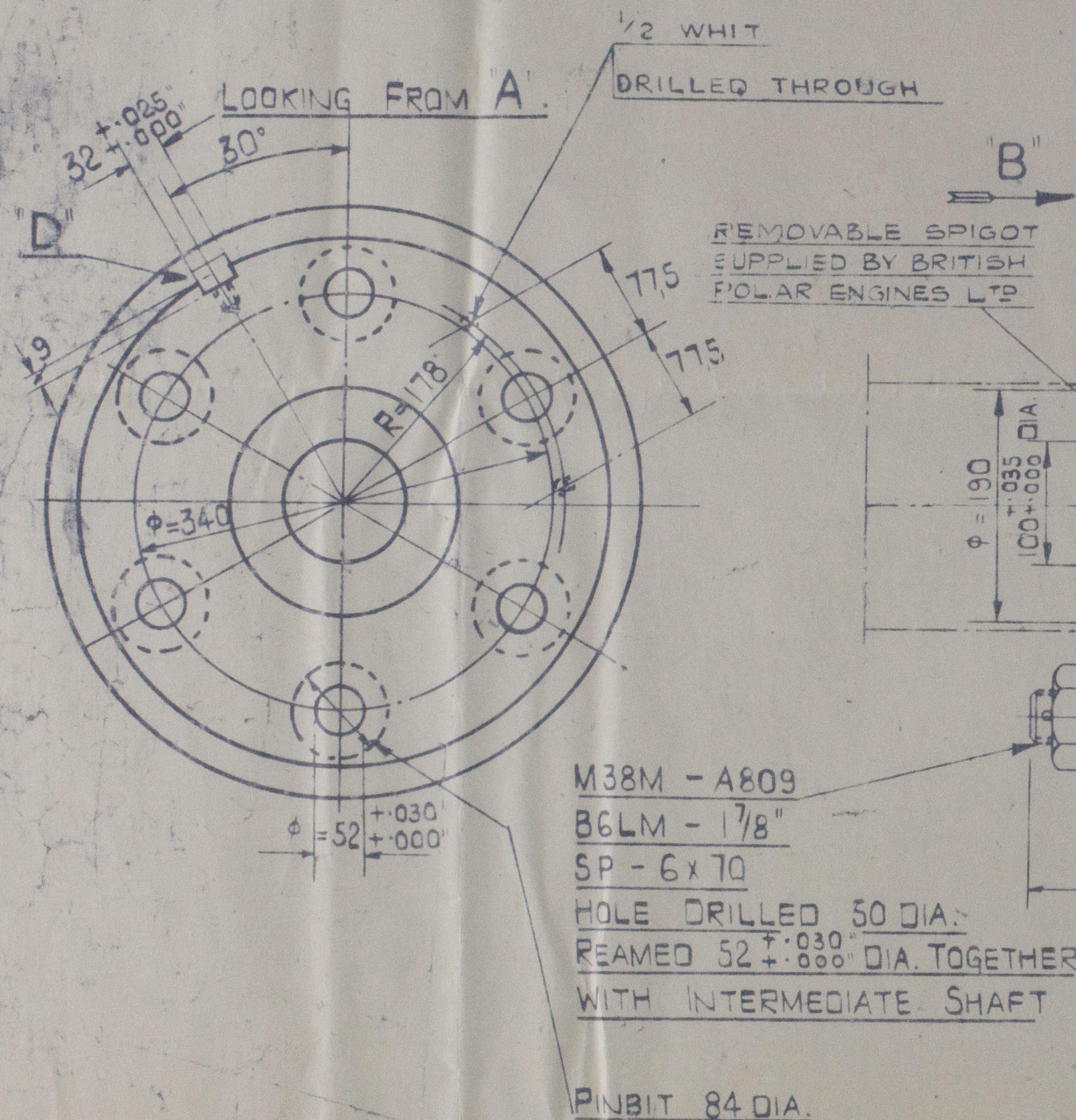
COUPLING BOLT DETAIL. NOT
SUPPLIED BY ENGINE BUILDER



DETAIL AT "C"



DETAIL AT "D"



GLASGOW REPORT NO. 79405.

APPROVED
LLOYDS REGISTER OF SHIPPING
UNITED WITH
THE BRITISH CORPORATION REGISTER

J. Carson

MATERIAL - S.M. STEEL TENSILE STRENGTH
32-36 TONS/D". ELONGATION AS SPECIFIED
BY THE CLASSIFICATION SOCIETY.

DESCRIPTION - 1ST SHAFT
MATERIAL - SEE NOTE

SURVEYOR'S COPY

SCALE: 1:1 1:5 ORIGIN: 2M4-105

E874

Date 13/3/52

B.P.E. 2
1/2 WHIT HOLE DRILLED &
TAPPED THROUGH
D.C.K.

B.P.E. 51
DETAIL OF COUPLING
BOLT FOR THRU
SHAFT ADDED

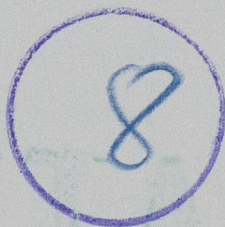
TYPE - M
ITEM - MAXI 50
Foundation

GUILDFORD'//



Thrust shaft.

RECORDS DEPT:
LONDON



RETAIL



© 2021

Lloyd's Register
Foundation

W1648-0022