

M. S. N^o

SCALE $\frac{1}{2}$ IN. = 1 FOOT.

TO CLASS AT LLOYD'S 100 A.I.

NUMERALS.

$57 + 36.58 \checkmark =$	93.58
$450 \times 93.58 =$	42111

d IN ENG. RM 18.5 WITH 6 ON DEPTH OF BEAM
KNEES AND TANK SIDE BRACKETS = 18
d OUTSIDE ENGINE ROOM 13

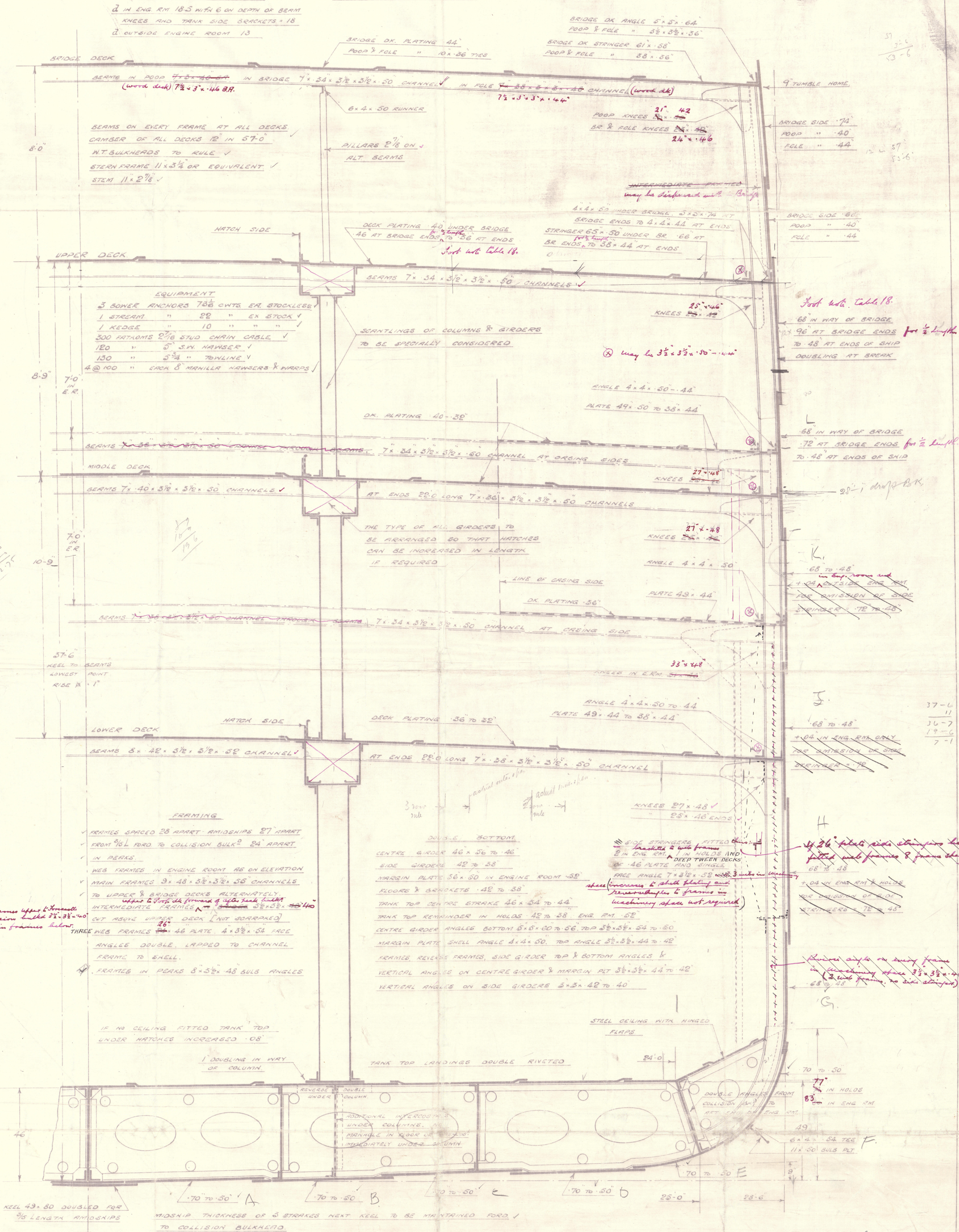
PROPORTIONS

L
0 TO BRIDGE DECK = 10.1 ✓

" " UPPER " = 12.3 ✓

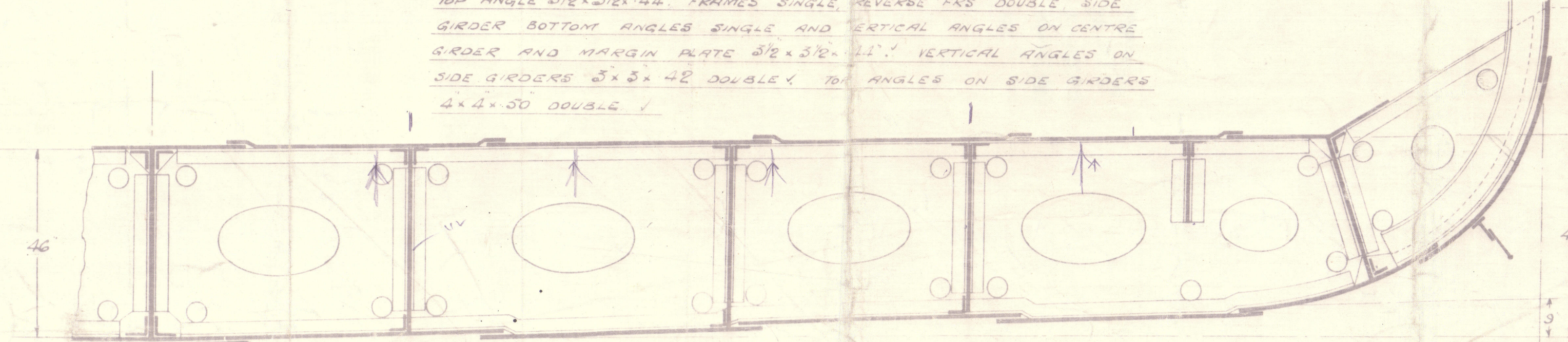
EQUIPMENT NUMBER

$L \times [B + O]$	=	42111 ✓
POOR BRIDGE & FOLE		1290 ✓
Deck House in Brief		480-25 43881-25 ✓



SECTION IN WAY OF ENGINES.

CENTRE GIRDER 36" WIDE GIRDERS 42" MARGIN ALT 22' FLOOR & BATT 42'
 TRUNK TOP CENTRE STAIRS 34" REMAINDER 22' CENTRE GIRDER ANGLES
 BOTTOM 5' x 5' 60" TOP 5' x 5 1/2" 42" MARGIN PLATE SHELL ANGLE 4.4' 50'
 TOP ANGLE 5 1/2" x 5 1/2" 44" FRAMES SINGLE REVERSE FRS DOUBLE SIDE
 GIRDER BOTTOM ANGLES SINGLE AND VERTICAL ANGLES ON CENTRE
 GIRDER AND MARGIN PLATE 5 1/2" x 5 1/2" 11' VERTICAL ANGLES ON
 SIDE GIRDERS 5 1/2" x 42" DOUBLY TOP ANGLES ON SIDE GIRDERS
 4 x 4 50 DOUBLE



SPACING OF SIDE GIRDERS TO SUIT ENGINE SETTING

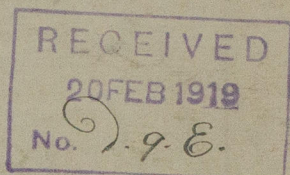
A circular purple ink stamp from Harland & Wolff Ltd. The text around the top inner edge reads "HARLAND & WOLFF LTD." and around the bottom inner edge "LONDON GLASGOW BELFAST". Below the company name, it says "ENGINEERS & SHIPBUILDERS". In the center, the date "20/1/19" is handwritten in black ink, and below it, the word "at" is handwritten and underlined. The stamp is partially obscured by a blue rectangular mark at the bottom.

Harland & Wolff. Ltd.

Proposed Motor Vessels. N^{os} 578-9

Twin Screw.

Midship Section.



Bel. 8347

"Dorsetshire"



© 2020

Lloyd's Register
Foundation

W1647-0215