

VESSELS FOR SHIPPING CONTROLLER

16/10/78

S.S. No 105. 108-9 MIDSHIP SECTION.

SCALE 1/2" = 1 FT.

MOULDED DIMENSIONS.

LENGTH 265'0" B.P.
BREADTH 41'0"
DEPTH 21'0"

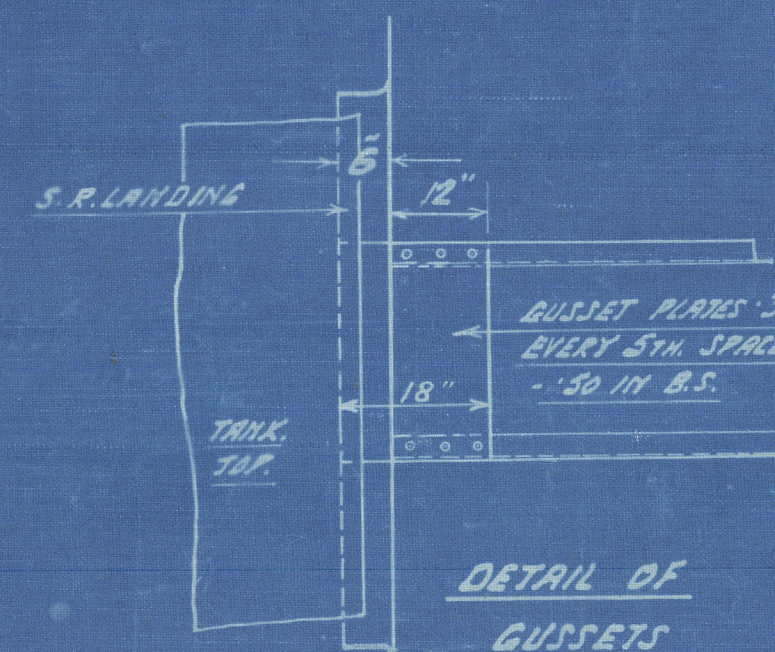
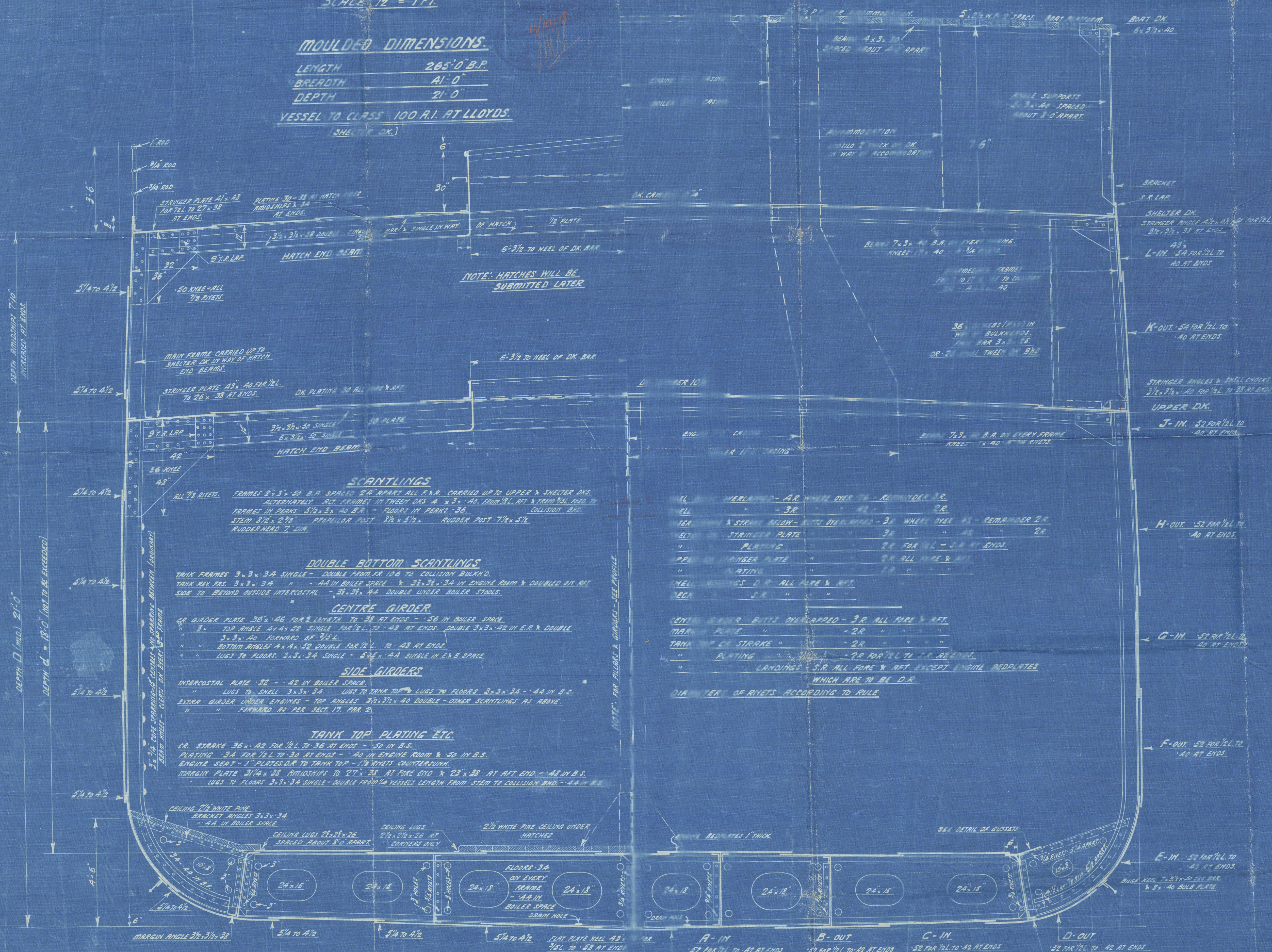
VESSEL TO CLASS 100 A.I. AT LLOYDS.
(SHELTER DK.)

SCANTLING NUMERALS
LONGITUDINAL $M(L/D) = 265(41/21) = 16430$
TRANSVERSE $N(D/B) = 41(21) = 861$
(TO SHELTER DK.) = 9/19
(TO 1/2" PLATE) = 18

EQUIPMENT NUMERAL = 18163

| | | |
|----------------|-------------|-----------------------|
| 1 BOWER ANCHOR | 25 1/2 CWT. | STOCKLESS. |
| 1 " | 3 1/2 " | " |
| 1 STREAM " | 9 1/4 " | ORDINARY - EX. STOCK. |
| 210 FATHOMS | 1 1/4 " | STUD CHAIN CABLE. |
| 75 " | 4 " | STEEL WIRE |
| 20 " | 3 1/2 " | " |
| 2-30 " | 6 " | MAXILLA. |
| 2-30 " | 5 " | " |

CABLE AS PER D.C.R.S. LETTER 22/12/72.
MIDGE ANCHOR DELETED BY D.C.R.S.



66/10/11

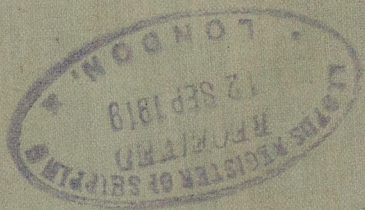
RECEIVED 1919

Standard C. S. Type,

H. & C. Grayson Ltd.

Nos. 108/9.

Midship Section



*S/S Colon
Liv. 79652*

RETAIN



© 2020

Lloyd's Register
W1646-0022
Foundation