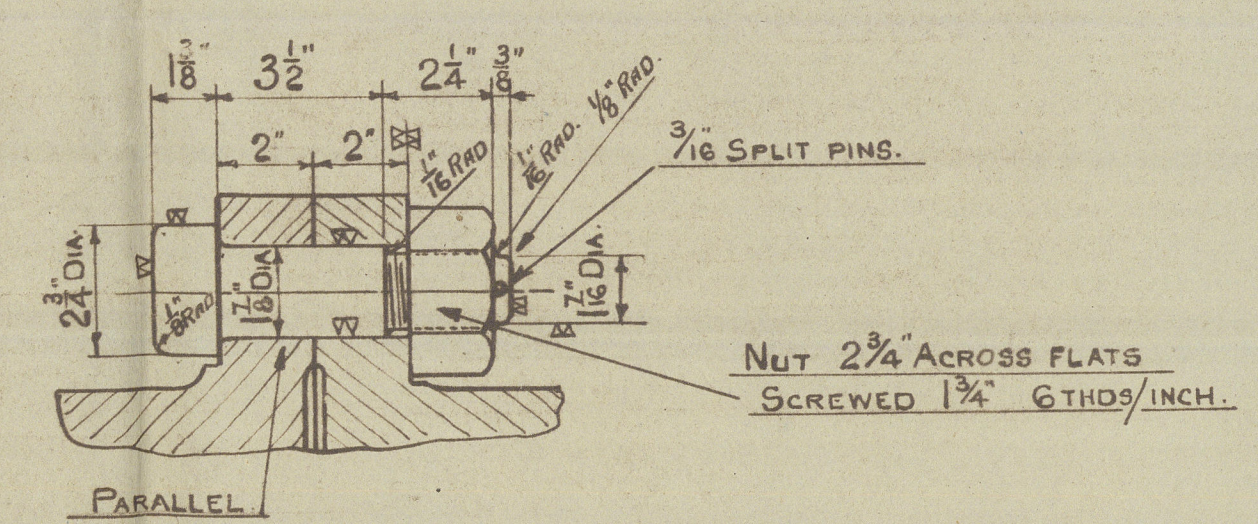
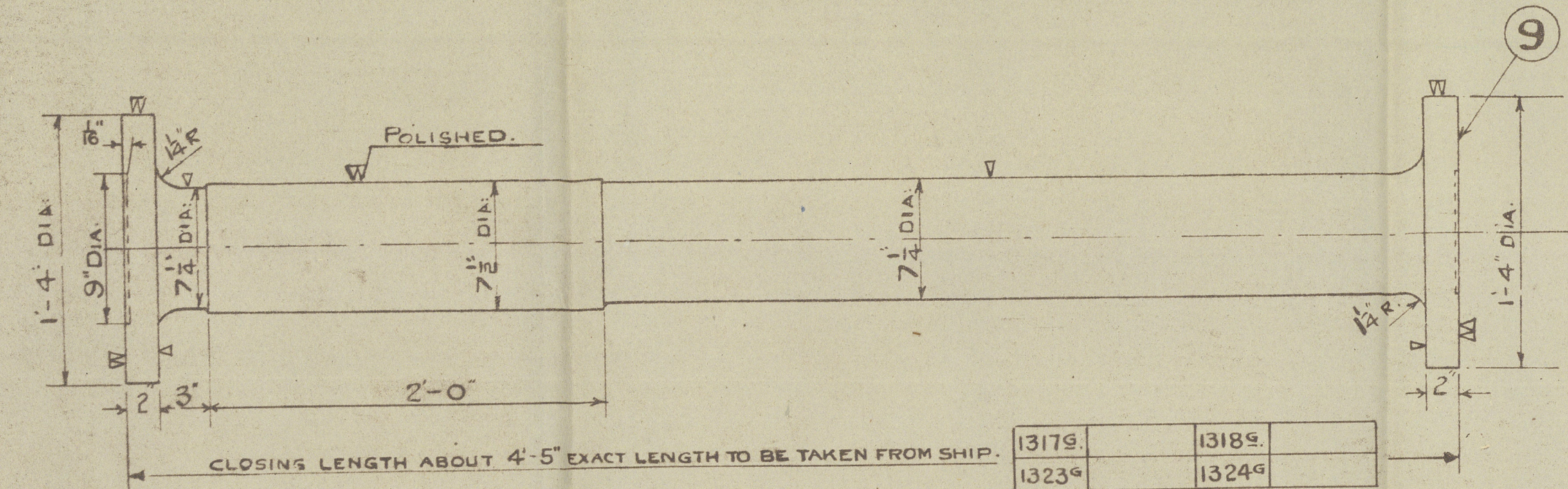
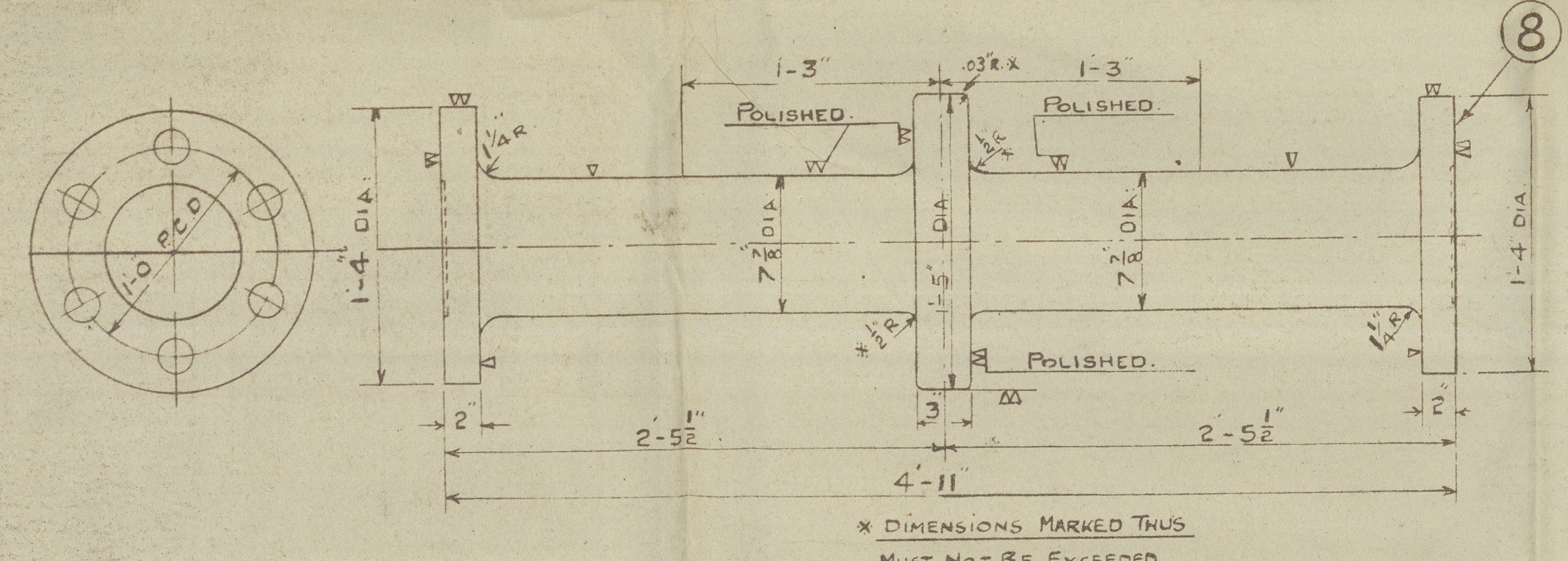
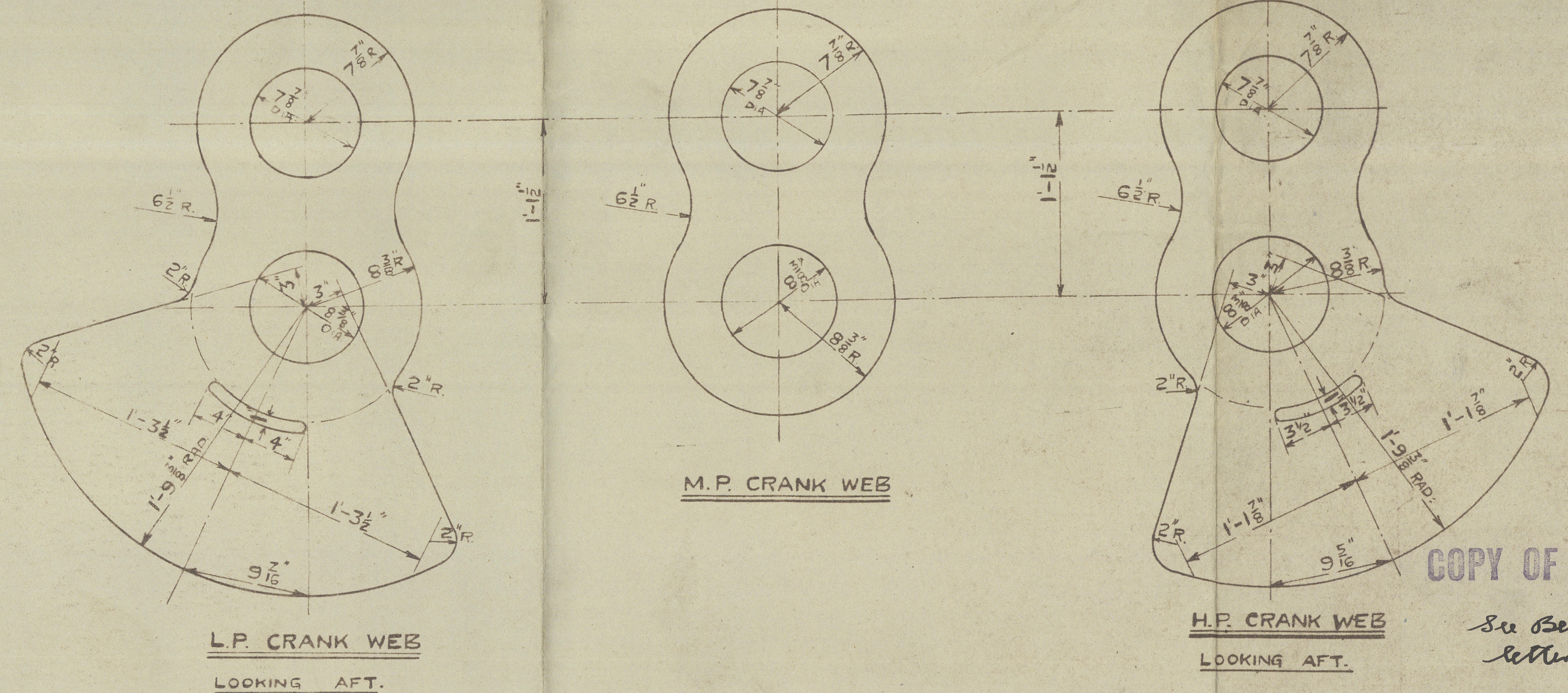


NOTE :- SHRINKAGE ALLOWANCE FOR CRANKPINS & JOURNALS TO BE 600 OF THE DIAMETER. EACH WEB TO BE HEATED ONCE ONLY. PIN & JOURNAL TO BE ENTERED SIMULTANEOUSLY. THE HEATING FOR SHRINKAGE SHOULD BE CARRIED OUT IN AN OVEN AND NOT ON A GAS HEATER IN THE SHOP



MARK	NO. OFF PER SHIP	DESCRIPTION	PATTERN NUMBER	MATERIAL	SECTION & SUB. OF EACH IN LBS.	EST. WT. IN LBS.	REMARKS	SHOP	SKETCH NO. OF VIG.
1	3	CRANK PINS.	R 12875	M. S. 3	4/0137				
2	1	H.P. CRANK WEB FORD	R 12876	M. S. 3					
	1	" " " AFT	R 12877	M. S. 3					
	1	M.P. " " FORD	R 12878	M. S. 3					
	1	" " " AFT	R 12879	M. S. 3					
	1	L.P. " " FORD	R 12880	M. S. 3					
	1	" " " AFT	R 12881	M. S. 3					
3	1	PLAIN JOURNAL FORD END	R 12882	M. S. 3					
	1	" " BETWEEN H.P. & M.P. CRANKS	R 12883	M. S. 3					
	1	" " " M.P. & L.P. "	R 12884	M. S. 3					
	1	FLANGE JOURNAL AFT END	R 12885	M. S. 3					
4	18	1 1/8" COUPLING BOLTS	P 11700	M. S. 1	4/0533	6 SPARE			
	18	NUTS FOR COUPLING BOLTS	P 11701	WROT IRON		6 "			
5	18	3/16" SPLIT PINS		STEEL		6 "			
6									

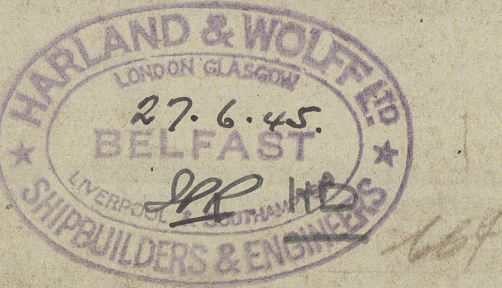


7									
8	1	THRUST SHAFT.	P 11699	M. S. 3	4/0532				
9	1	INTERMEDIATE SHAFT.	P 11698	M. S. 3	4/0533				
10	1	KEY FOR TURNING WHEEL	R 12888	MILD STEEL	0/0224				

NOS. - 1317G - 1318G.  
NOS. - 1323G - 1324G.

DETAILS OF CRANKSHAFT & SHAFTING

SCALE 1/2" = 1 FOOT.  
P.P.R. 14.3.45.





Harland & Wolff

Aug 1318



Details of Crandshaft

J. Shapnig

Glasgow Apr 70449

2

Lloyd's Register  
Foundation

W1645-0024