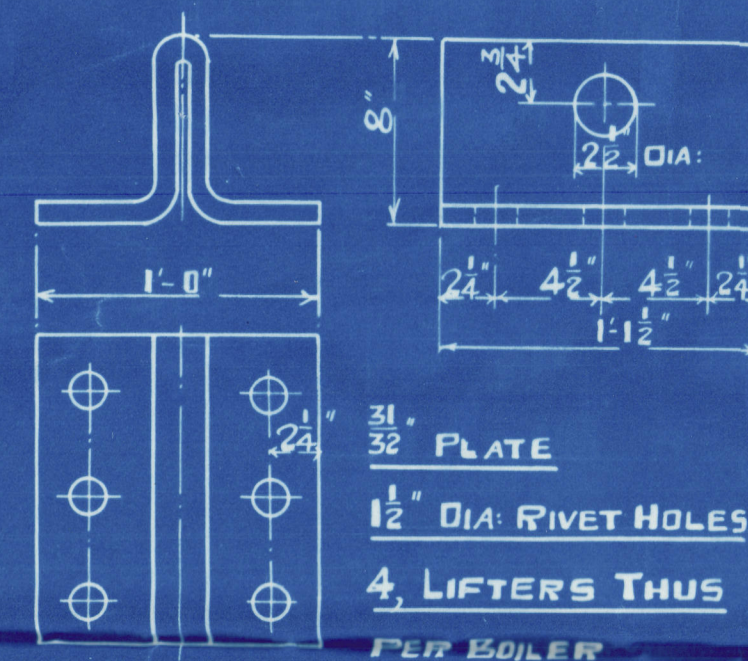
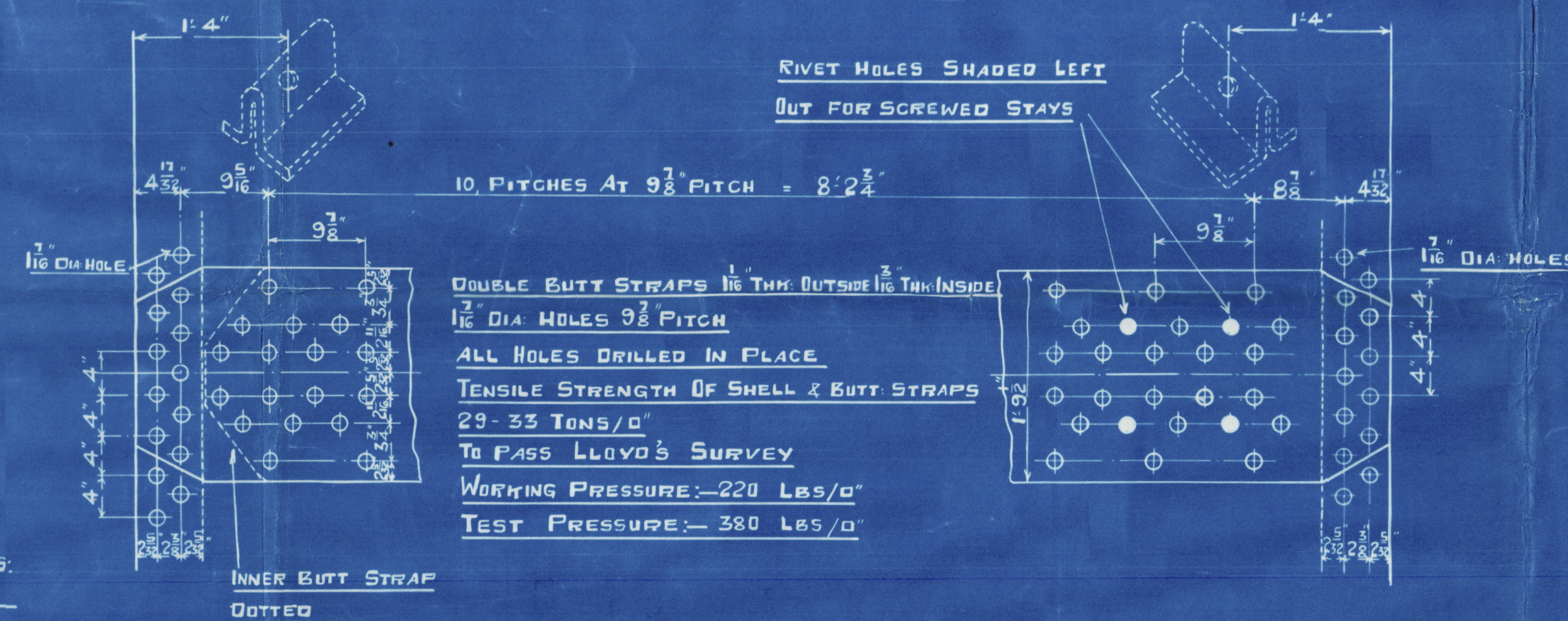


SCALE: 1 INCH = 1 FOOT

Yafraz. 18/10/35
L. Loz
App. of Baydo 15/10/35

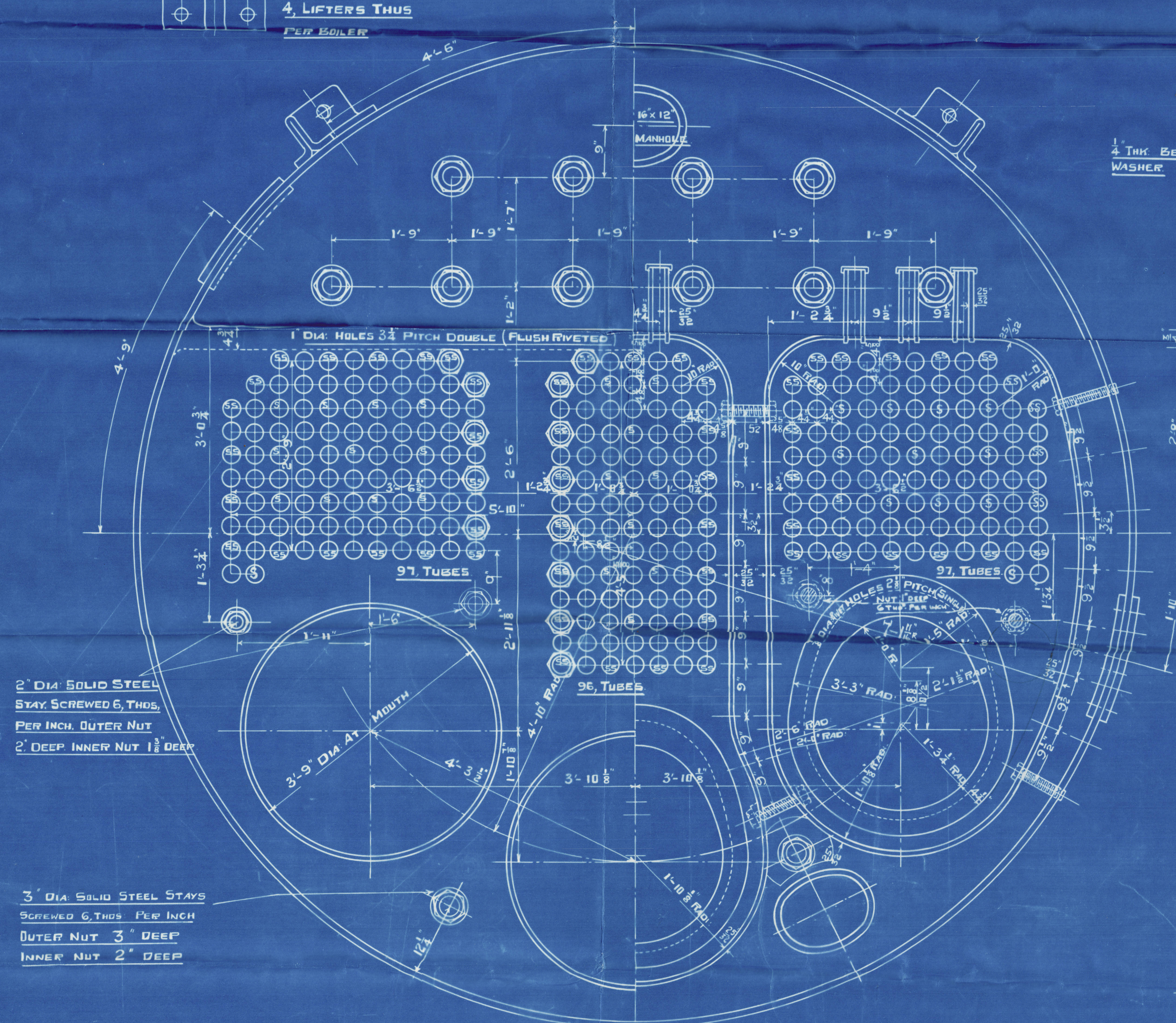


$$S_{\text{SHELL}} \% = \frac{(44-2) \times 29 \times 85.4\%}{2.75 \times 171.25} = 220.8 \text{ LBS.}$$

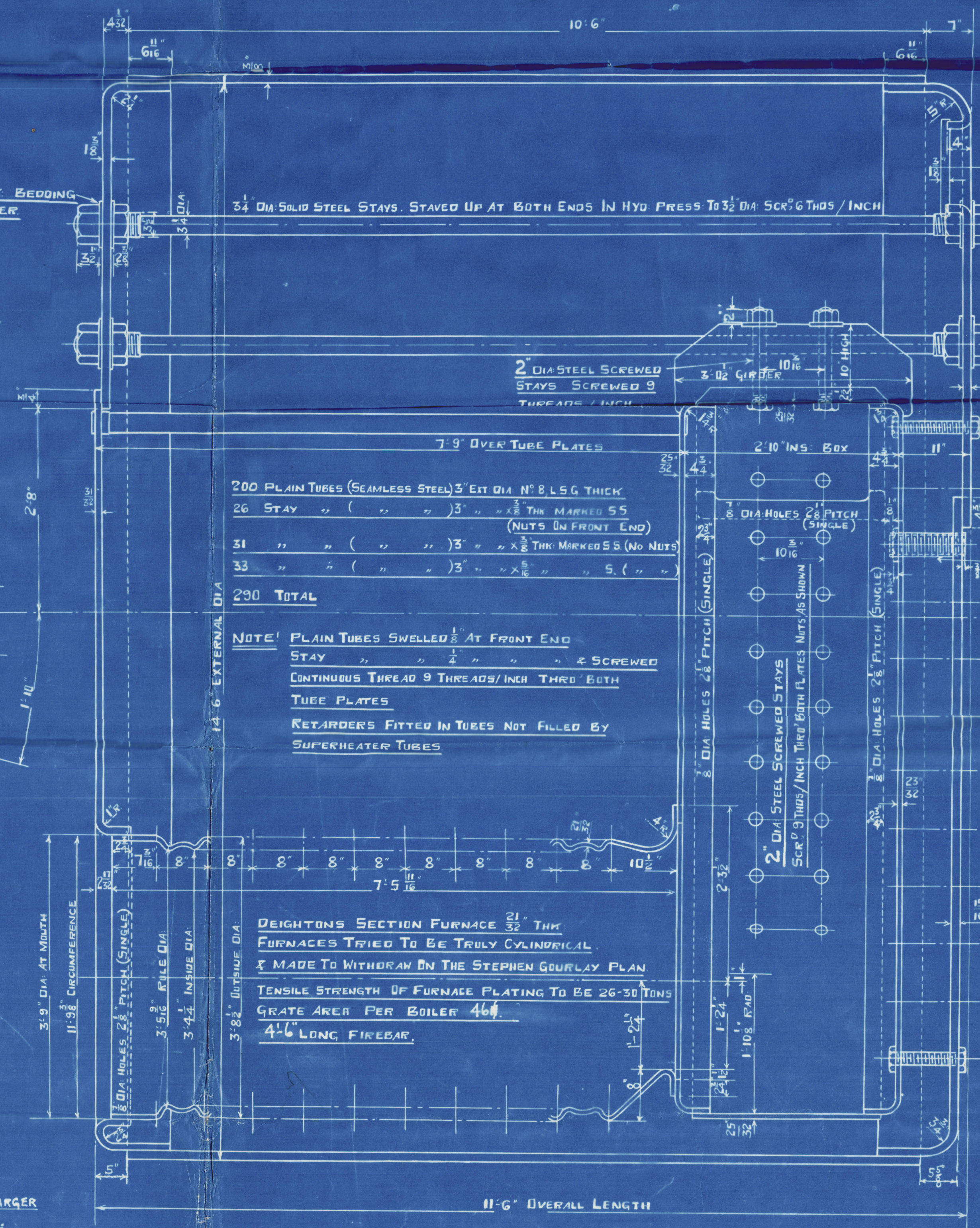


PARTICULARS FOR ONE BOILER				256
HEATING SURFACE TUBES	=	1765	¢	
" " FURNACES	=	144	¢	
" " SIDES & TOP	=	145	¢	
" " BACKS	=	70	¢	
" " BAG-TUBE PLATE	=	46	¢	
" " FRONT " "	=	35	¢	
" " TOTAL	=	2205	¢	440
AREA THRO' TUBES	=	10.56		216

TESTS OF MATERIAL	
SHELL PLATES	29 - 33 TONS
BUTT STRAPS	29 22 22
GIRDERS	22 22 22
MANHOLE DOORS	22 22 22
ALL COMB CH & FLANGING PLATES	26 - 30 22
FURNACES	22 22 22
SCREWED STAYS	29 29 22
LONGITUDINAL STAYS	28 - 32 22



NOTE: ALL SCREWED STAYS ARE $\frac{1}{8}$ " IN DIAMETER LARGER THAN LLOYD'S REQUIREMENTS.



ONE - OFF AS DRAWN. PORT B^{LR}
ONE - " TO OPP. HAND STA^R "

TRACING N° 765

CONTRACT N° ~~2874~~ 2874

W1644-0177

20



© 2020

Lloyd's Register
Foundation

W1644-0177

S.S. "Beaconsfield".

NEWCASTLE ON TYNE.

Report No. 96583.

The North Eastern Marine Eng. Co. Ltd.

bont. N^o 2876

Caledon S. B. Co N^o 367 Vessel

Main Boilers

W.P. 220 lbs./sq.

Steel Duplicate of Builder N^o 2876
as "Blackhead" - Test Rpt 98815

St "Beckenham"

N ^o 727
LLOYD'S TEST
380 LBS
W.P. 220 LBS.
27-7-37 J.E.S.

S.S. "Beckenham"

NEWCASTLE ON TYNE.

Report No. 95512 Lloyd's Register
Foundation

W1664-0177