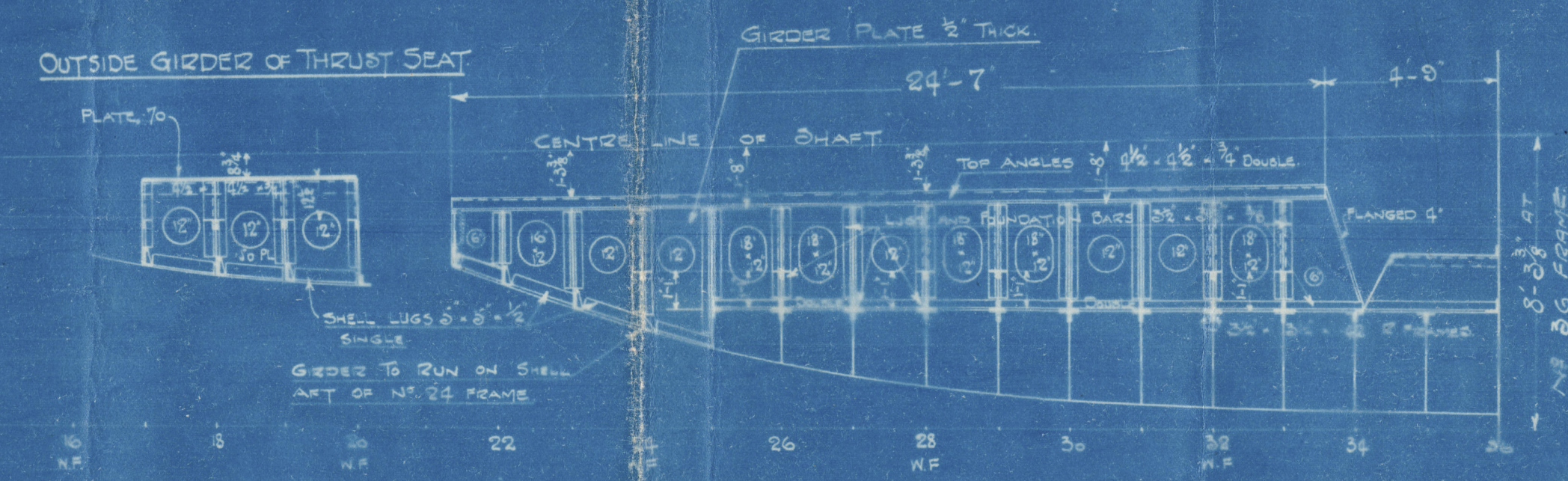


13.5.14

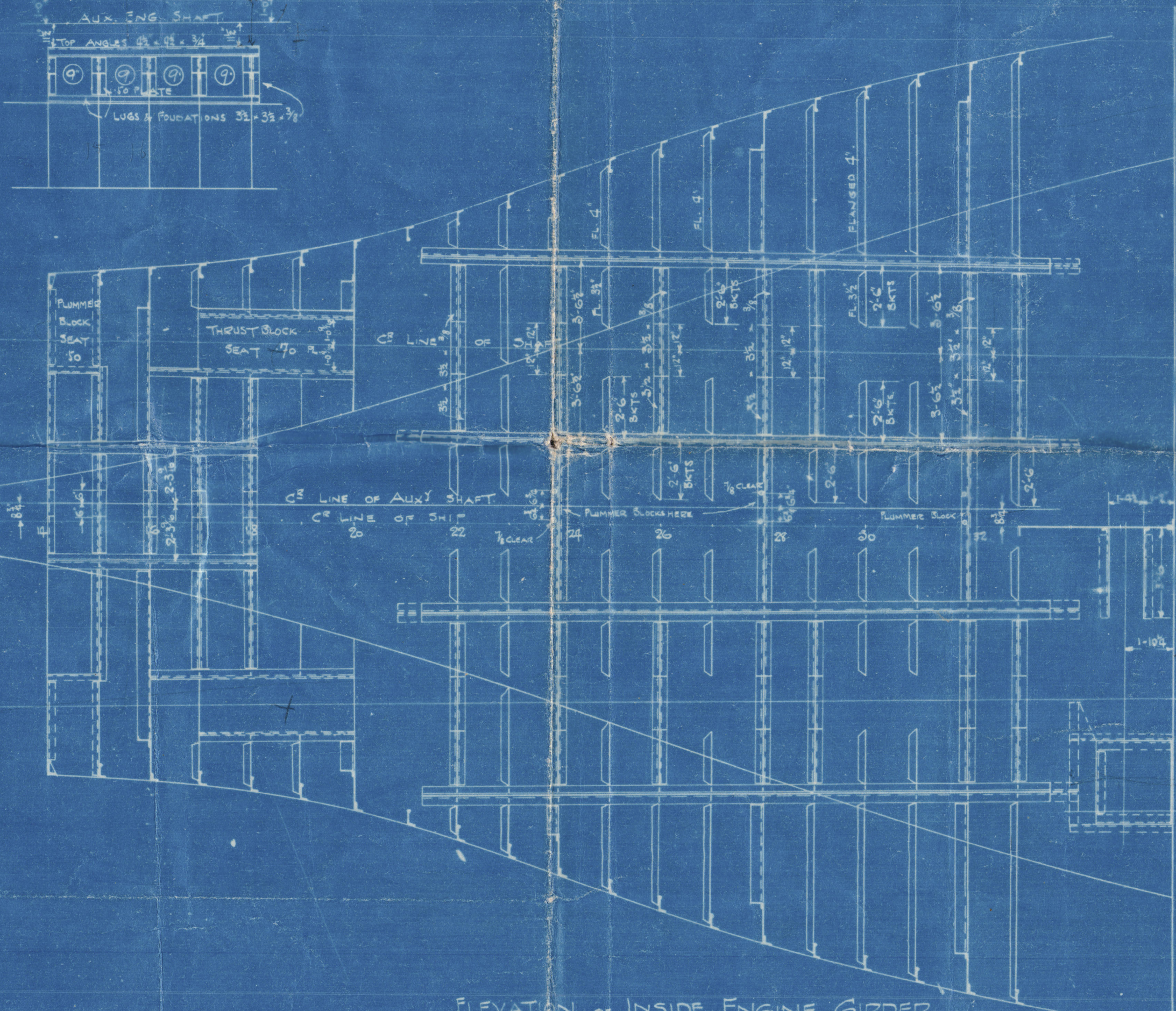
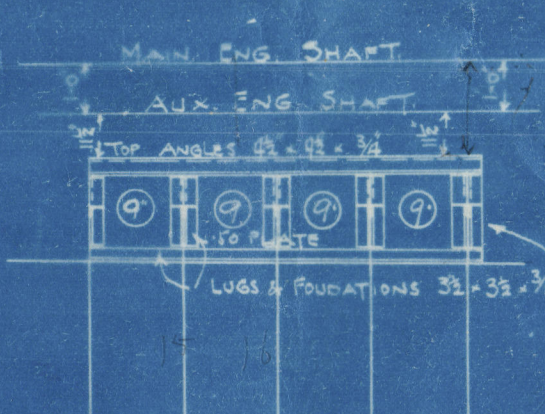
SELENE T.S.M.O.V. CASSIS. N° 233. PLAN OF ENGINE SEATING.

— SCALE $\frac{1}{4}$ IN. = 1 FT. —

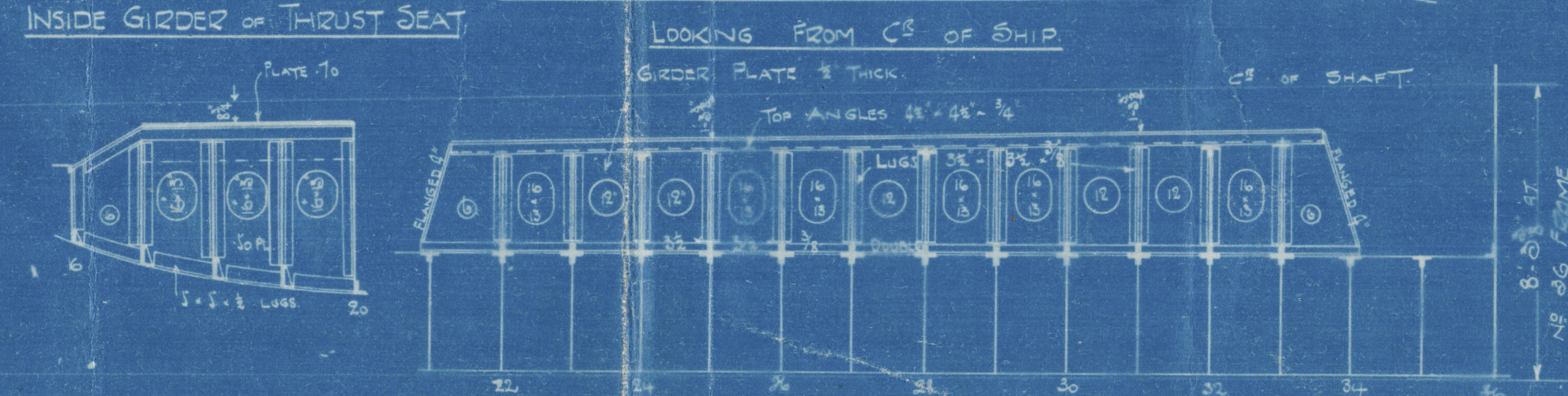
ELEVATION OF OUTSIDE ENGINE GIRDER
LOOKING FROM CR OF SHIP



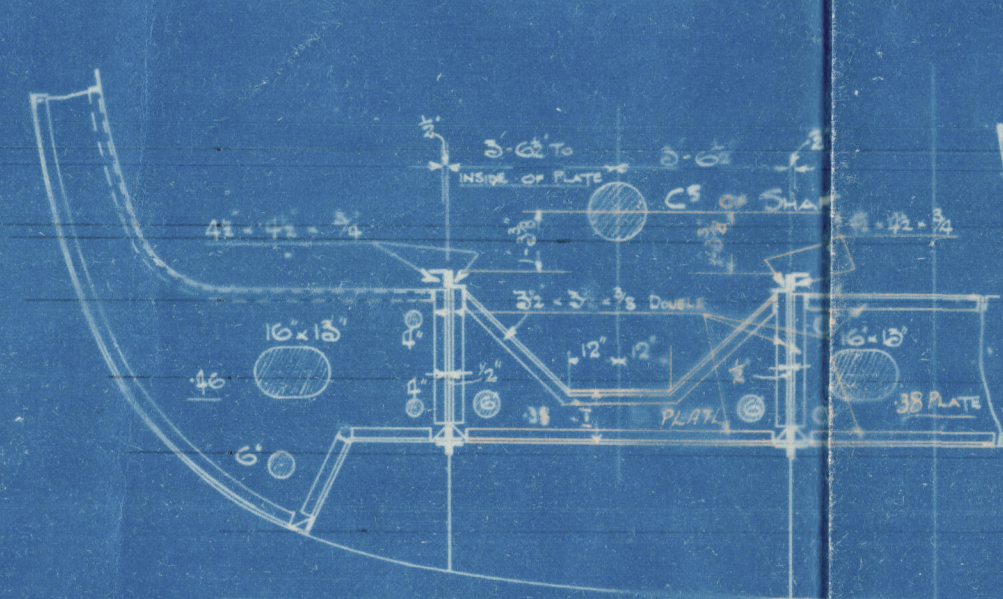
AUXILIARY ENGINE SEAT



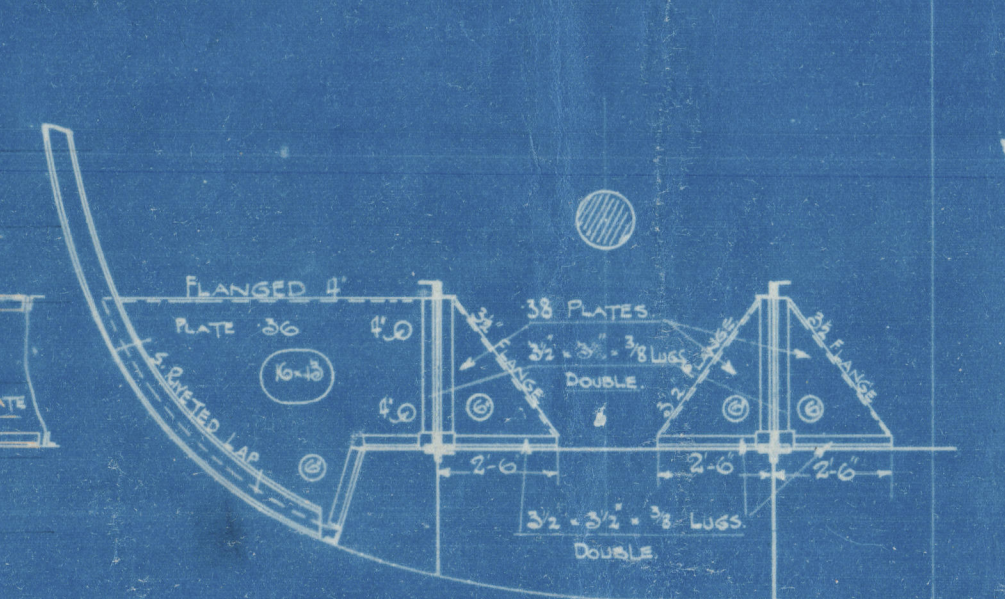
ELEVATION OF INSIDE ENGINE GIRDER
LOOKING FROM CR OF SHIP



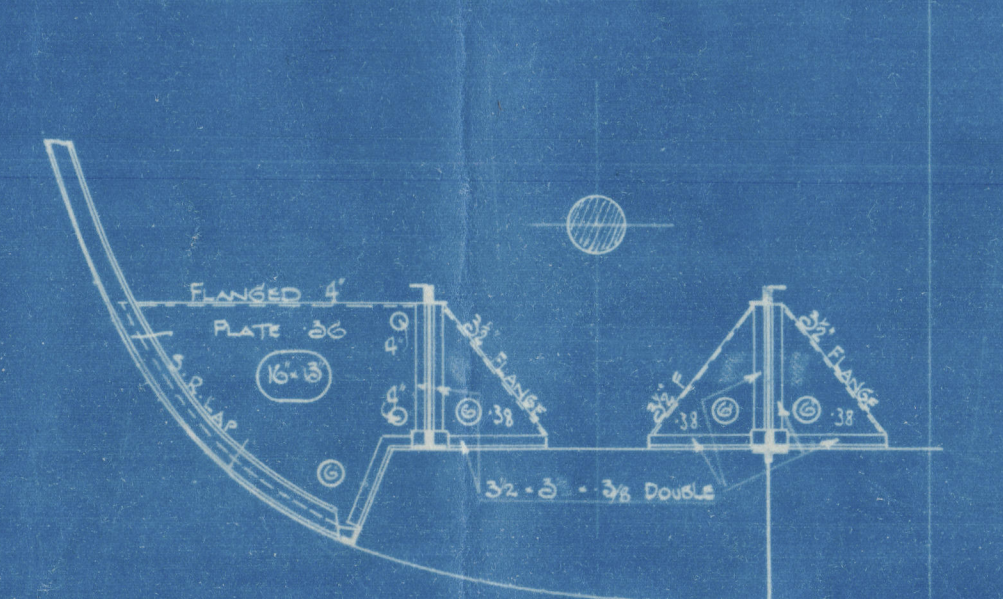
SECTION AT 32 FRAME



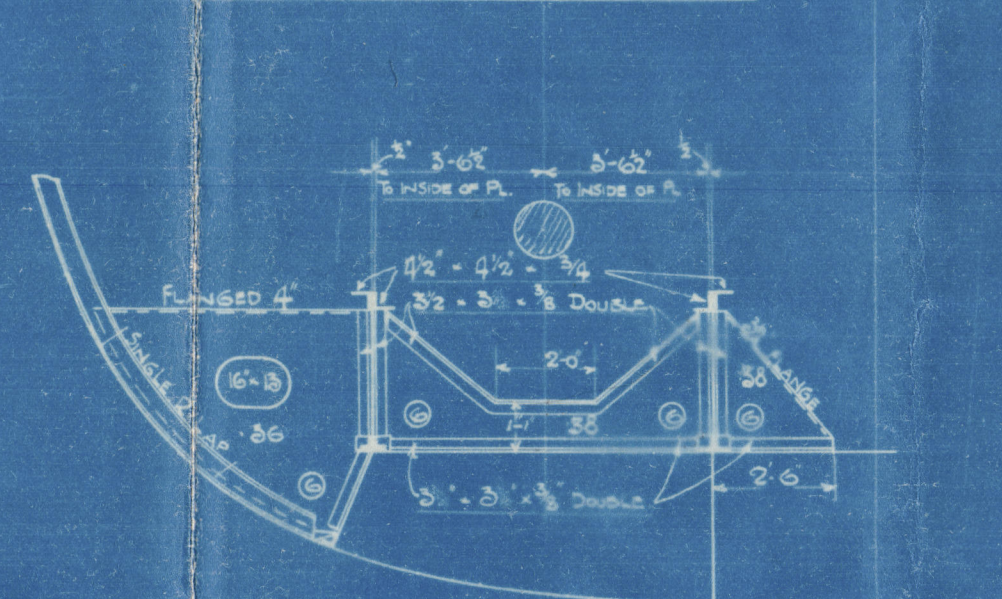
SECTION AT 31 FRAME



SECTION AT 30 FRAME

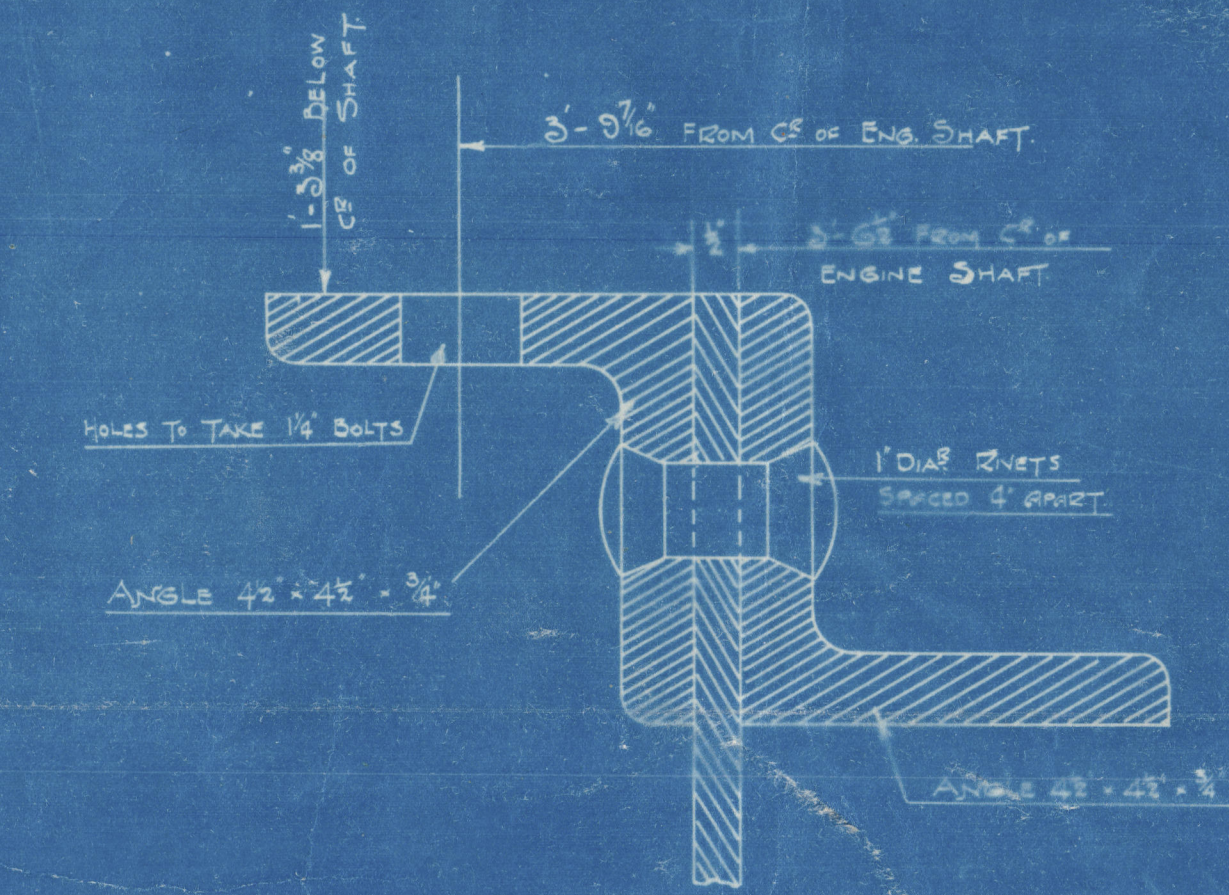


SECTION AT 29 FRAME

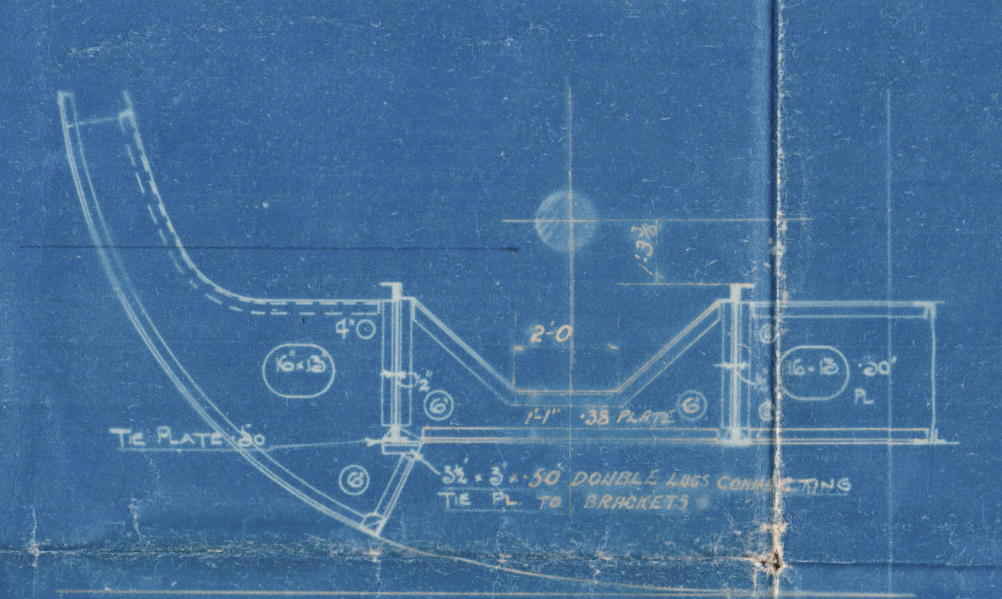


ANGLES TO TAKE ENGINE FOUNDATIONS.

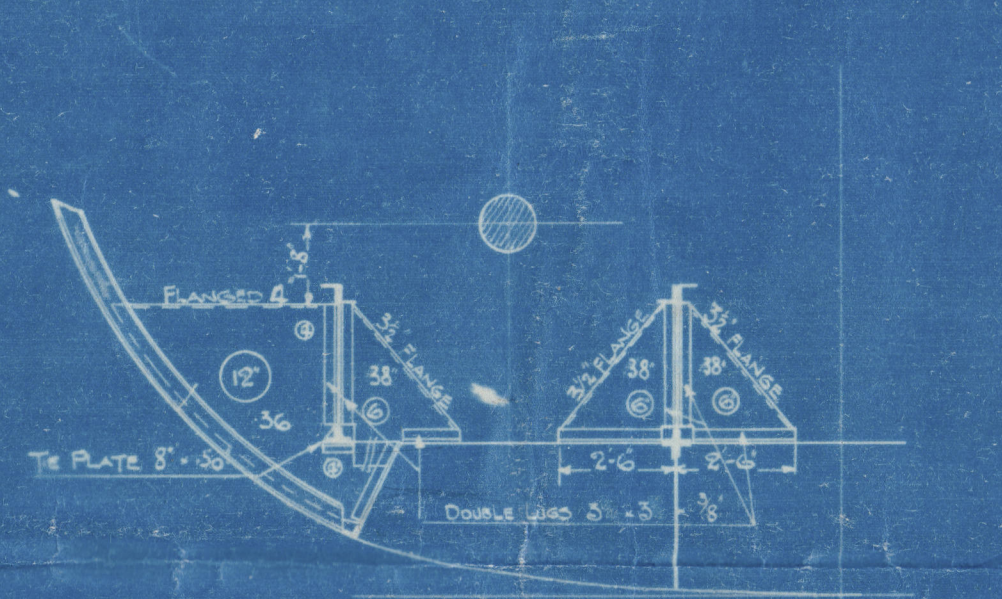
HALF SIZE



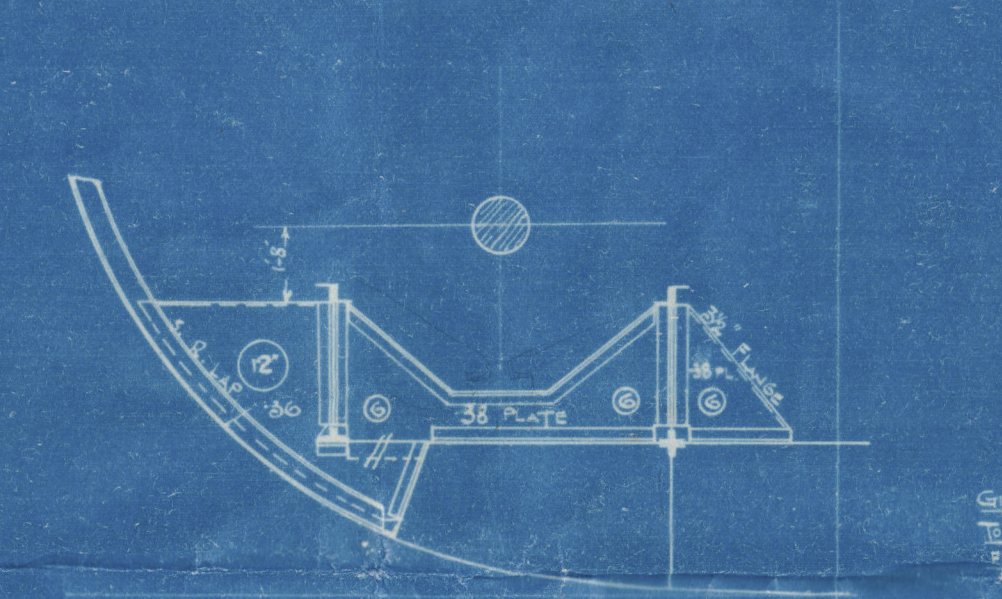
SECTION AT 28 FRAME



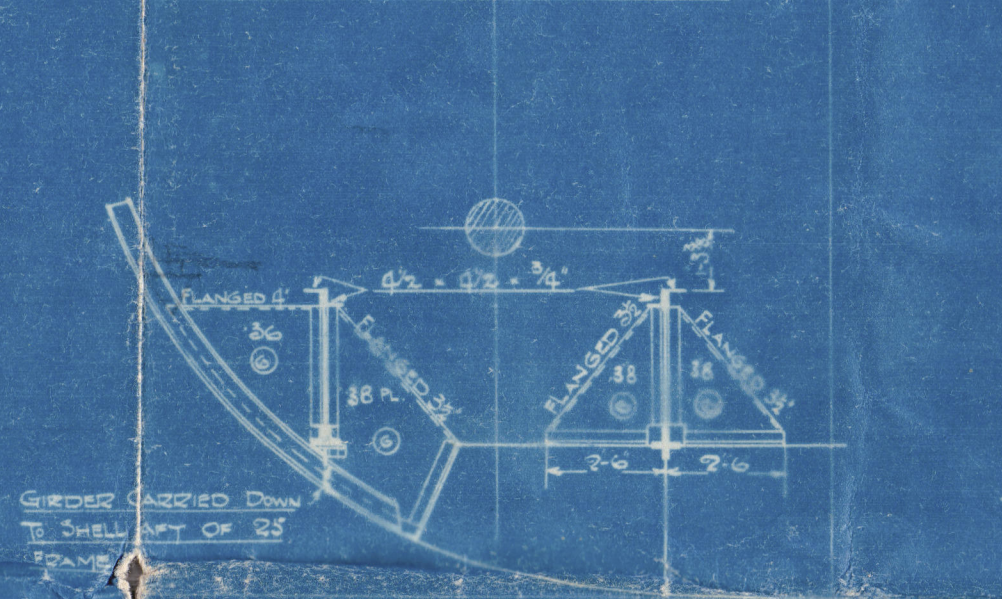
SECTION AT 27 FRAME



SECTION AT 26 FRAME

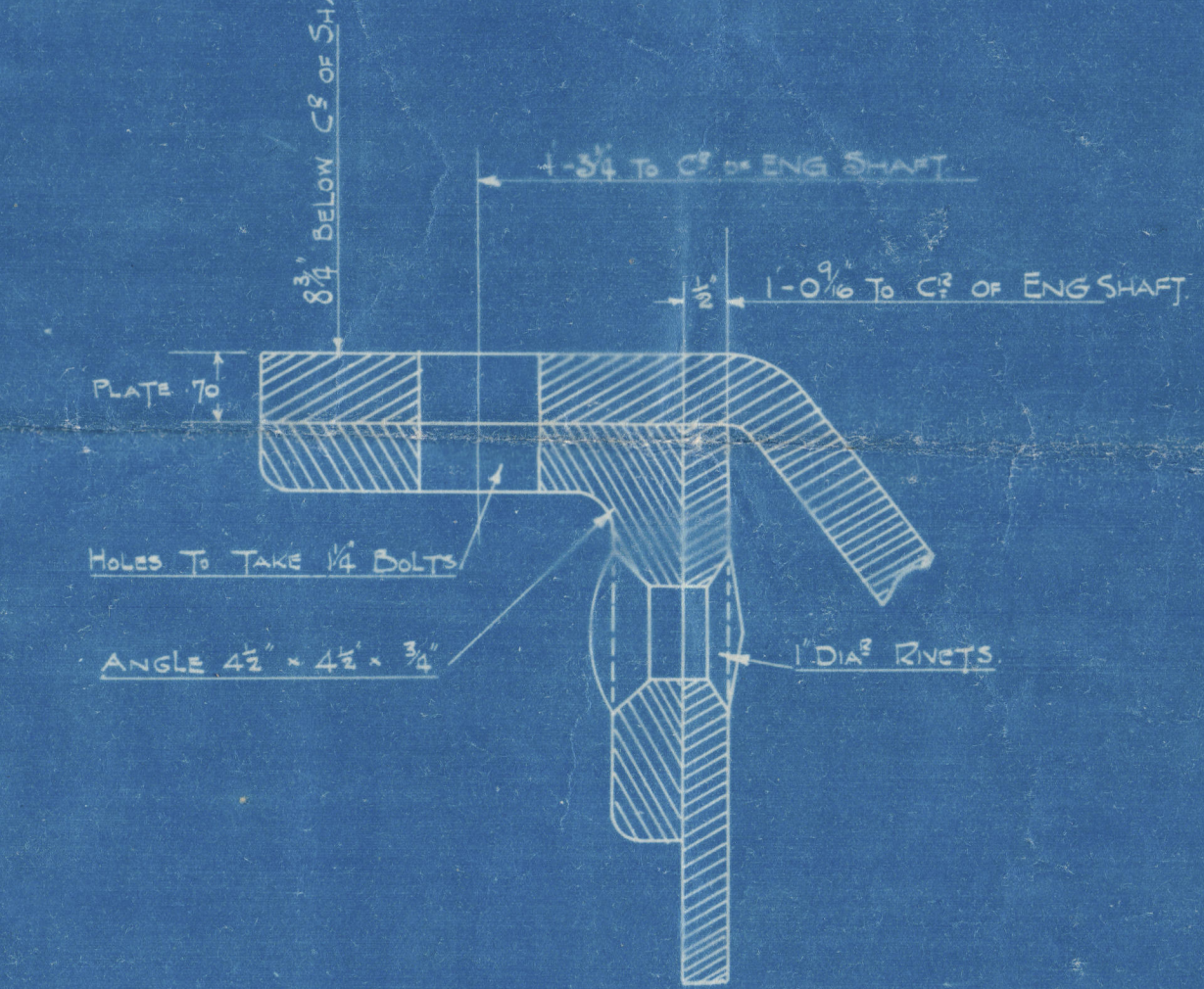


SECTION AT 25 FRAME

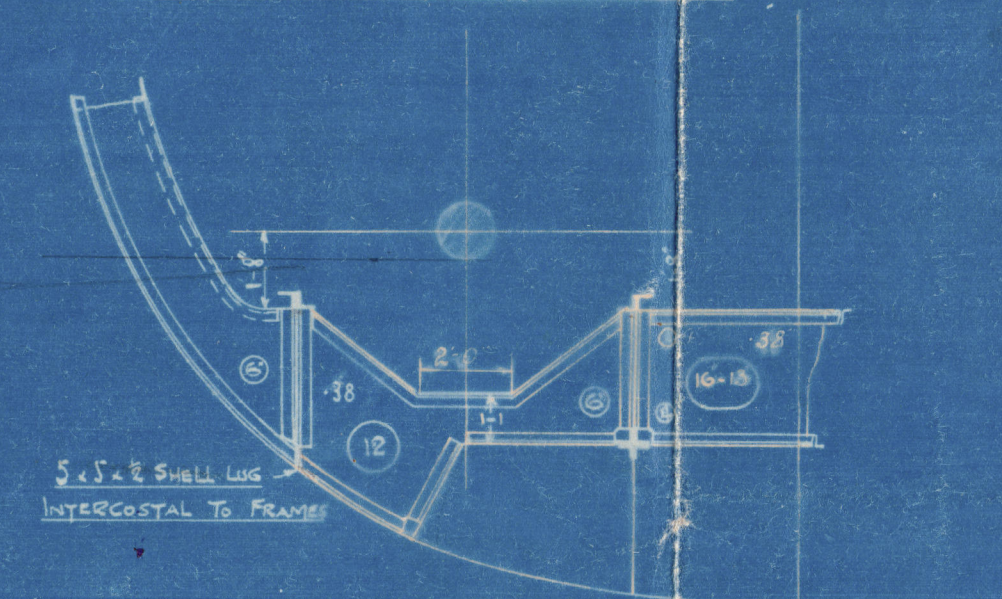


ANGLES TO TAKE THRUST BLOCK

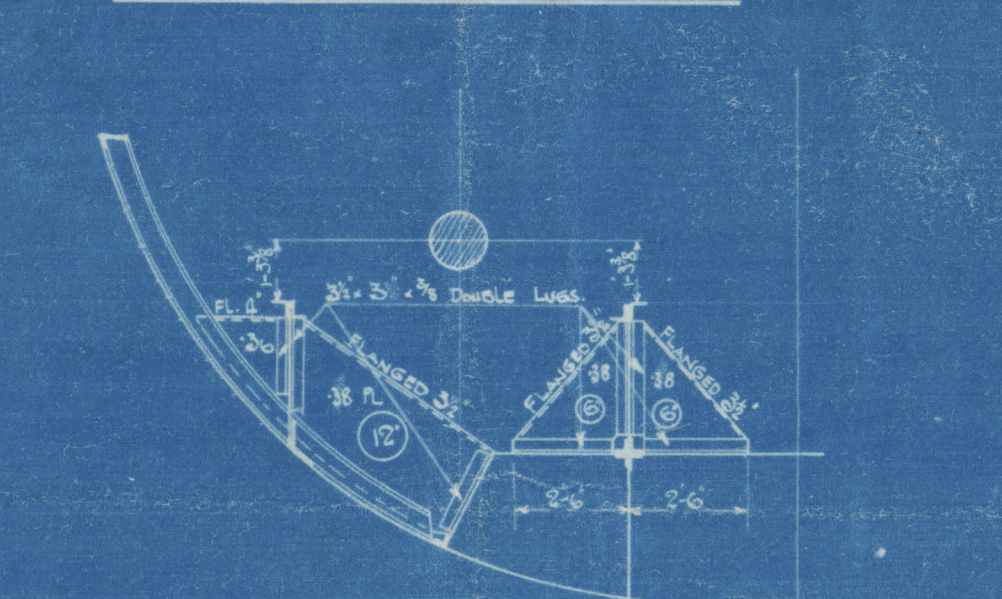
HALF SIZE



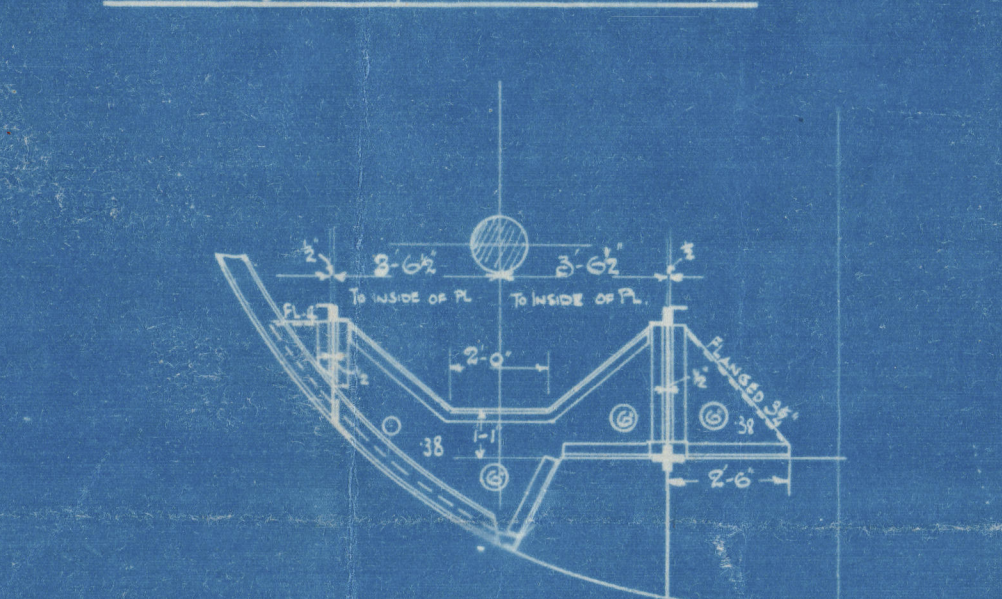
SECTION AT 24 FRAME



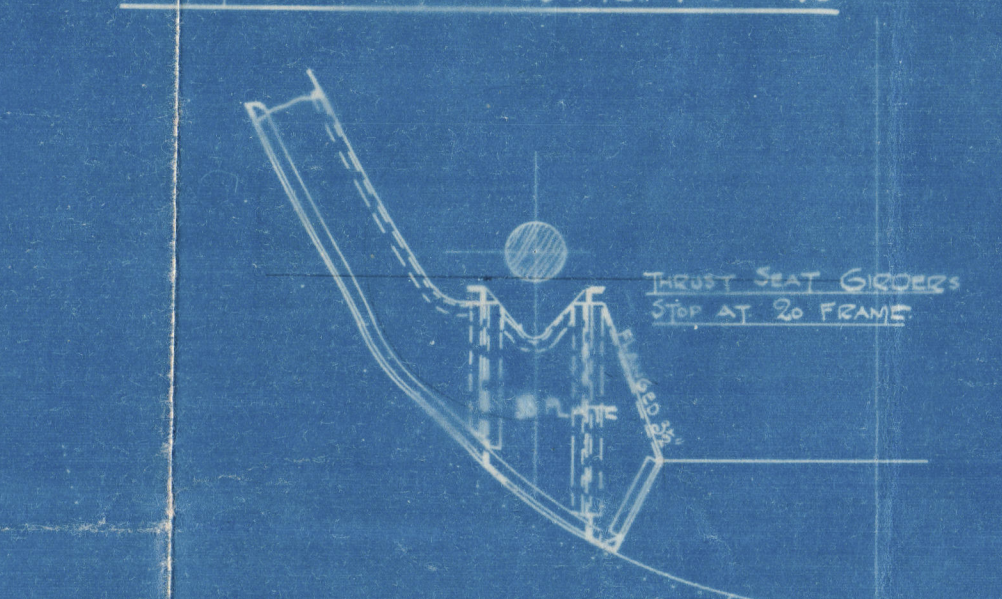
SECTION AT 23 FRAME



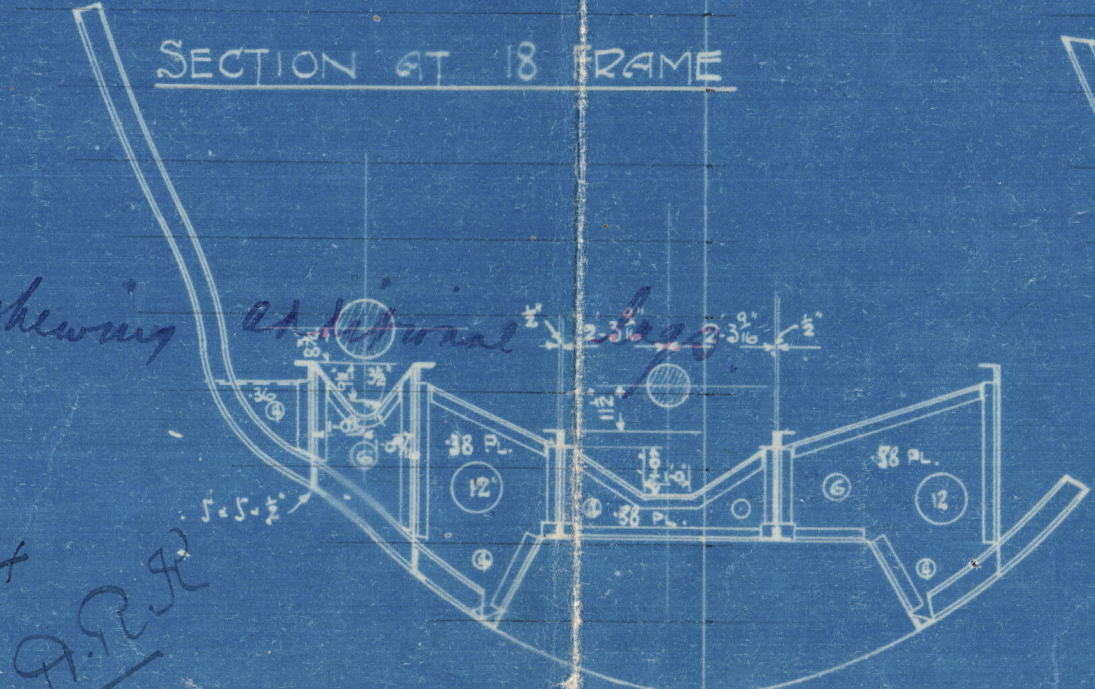
SECTION AT 22 FRAME



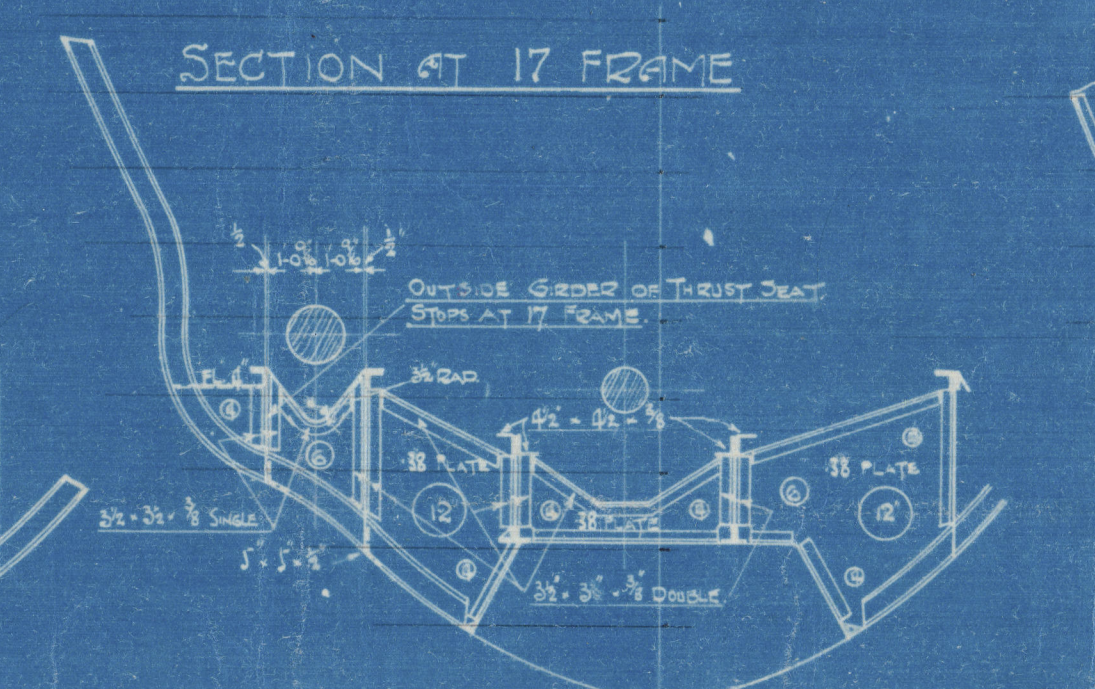
SECTION AT FRAME N° 20



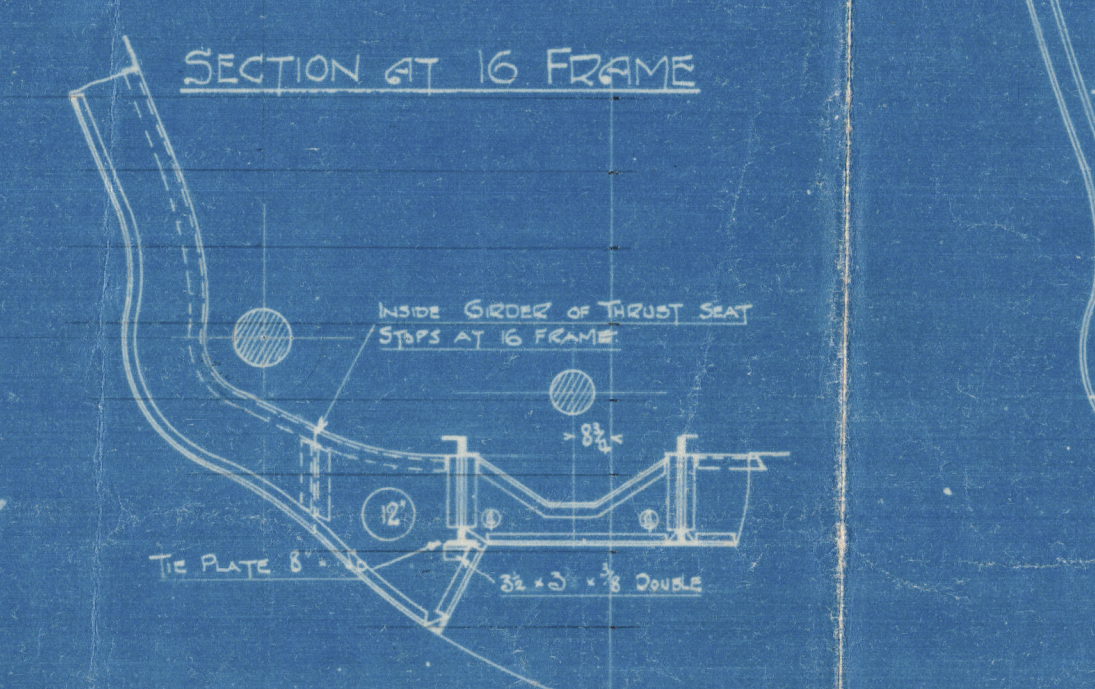
SECTION AT 18 FRAME



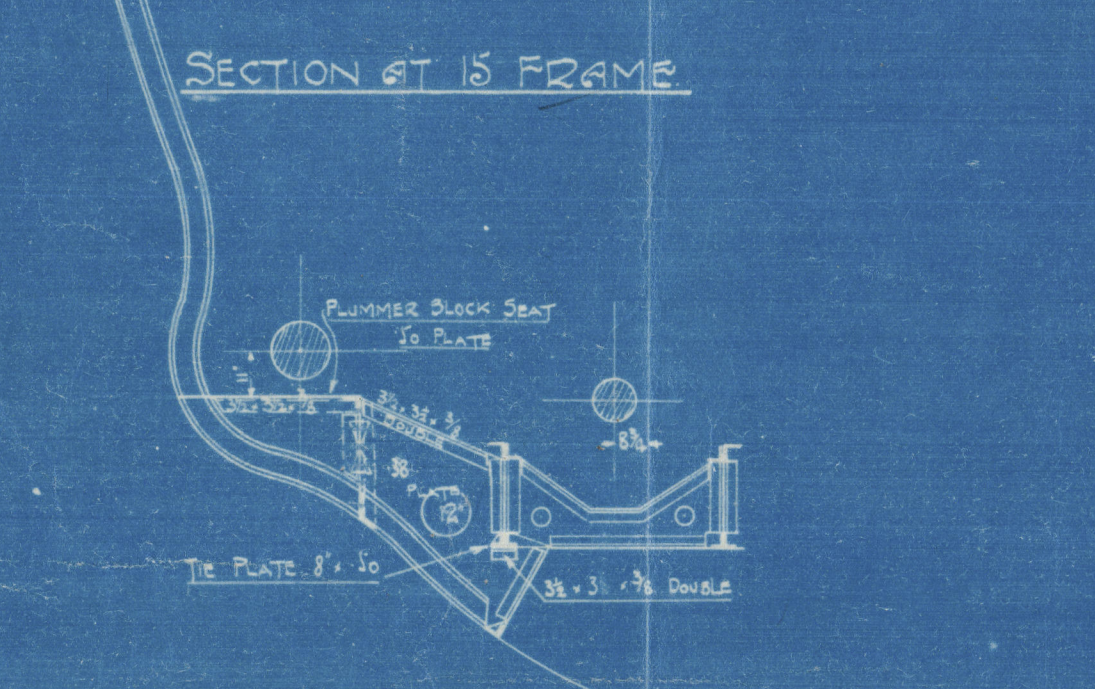
SECTION AT 17 FRAME



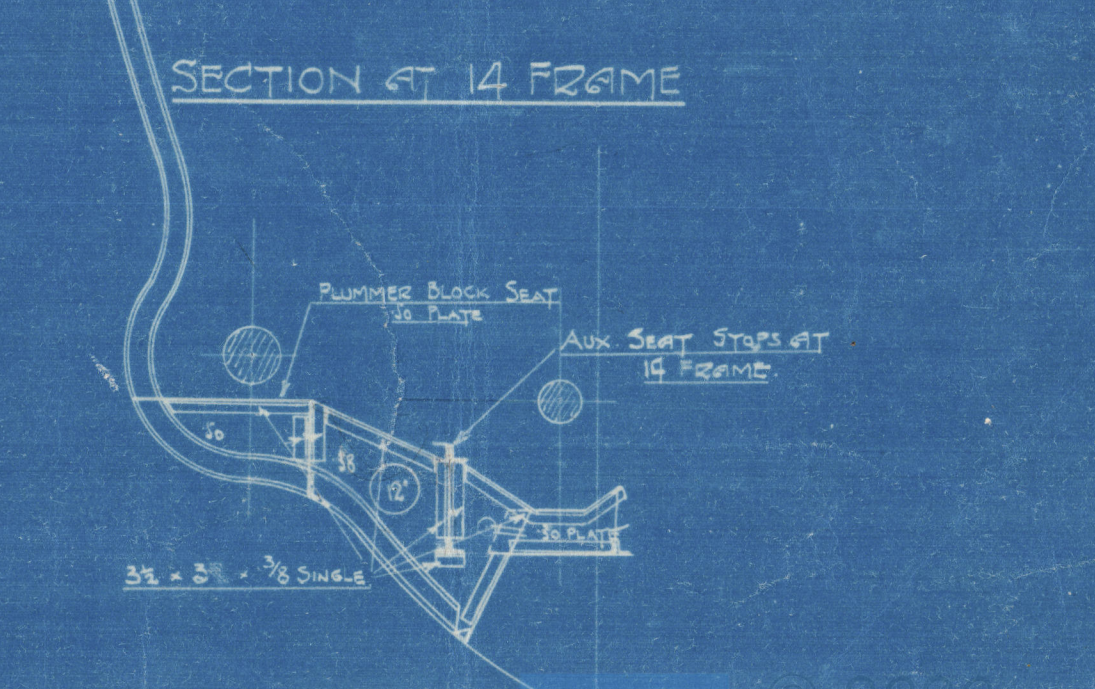
SECTION AT 16 FRAME



SECTION AT 15 FRAME



SECTION AT 14 FRAME



Sketch showing additional details

cf.
8.5.14
J.P.R.

THE QUEENSHIPBUILDING & ENGINEERING CO. LTD.
20 NOV 1912
DUNDEE 817 80 DUNDEE

THE QUEENSHIPBUILDING & ENGINEERING CO. LTD.
24 DEC 1912
DUNDEE 817 80 DUNDEE

2020
How to Register
W-1644-0220

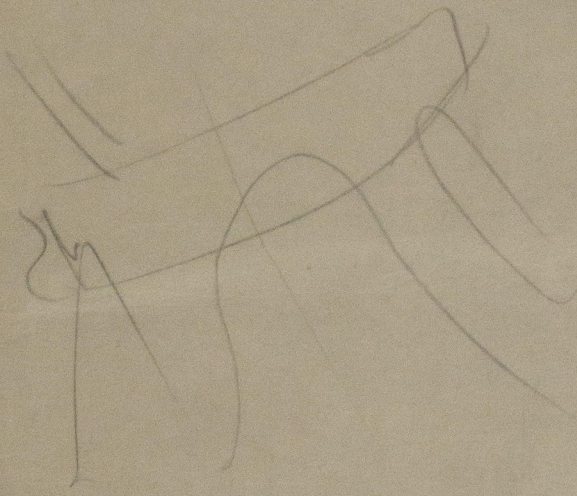
375

1000
300
700
100
500



© 2020

Lloyd's Register
Foundation



© 2020

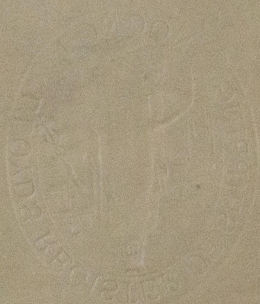
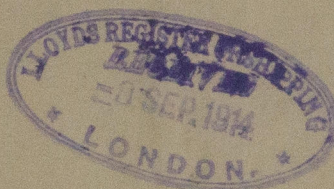
Lloyd's Register
Foundation

Engine Seat S. S.
Hlene as Constructed
by Caledon S. S. Co.

Dundee 7818



RETAIN



W1644- 0120



© 2020

Lloyd's Register
Foundation