

16.8.12
7.11.12
19.11.12
24.12.12
4.3.13
6.5.13
24.11.13

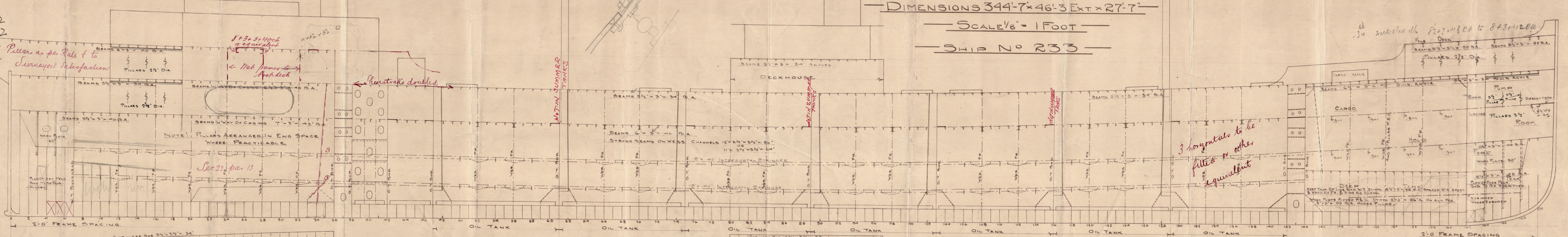
Pillars as per Rule & to
Surveyors Satisfaction

See 22 par 13

3 horizontal to be
filled or other
equivalent

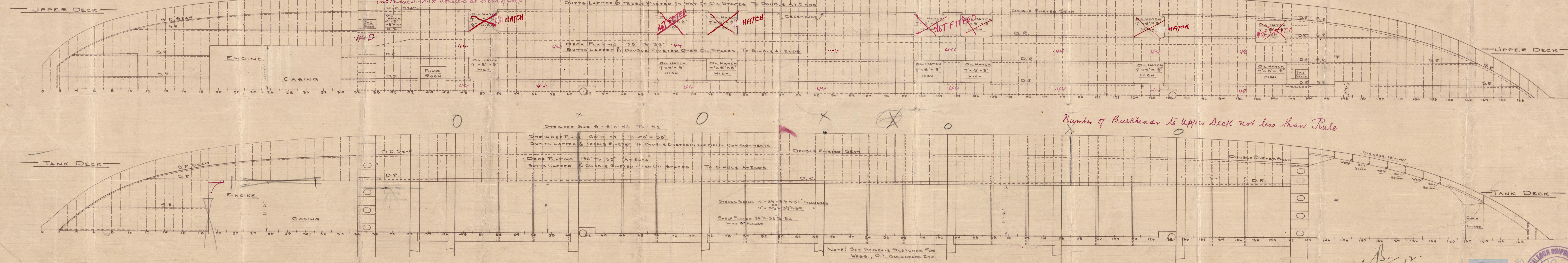
34 sub with 1st 120 to 8434200

— PROFILE & DECK PLANS —
— OF A TWIN SCREW OIL VESSEL —
— DIMENSIONS 344'-7" x 46'-3" EXT x 27'-7" —
— SCALE 1/8" = 1 FOOT —
— SHIP NO 233 —



FEEDBOARD PARTICULARS	
UNDER DECK TONNAGE	3225
SHRE FORWARD	7'-0"
1/8 L FROM STEM	3'-85"
AFT	3'-6"
1/8 L FROM STERN	1'-92"

For Cillight Buckheads in Summer
Shuts see separate plan
9/13



16.8.12

PROFILE & DECK PLAN
CALEDON S.B. & CO. LTD

Faunus
N^o 233
T.S.S. "SELENE"
~~"SEBASTIAN"~~

DUN. RPT. N^o ~~7817~~
7818

REGISTER OF SHIPPING
20 DEC 1912
Helena

Faunus
People

25 FEB 1913
28 DEC 1912
26 OCT 1912
LONDON

LODYS REGISTER OF SHIPPING
RECEIVED
13 MAR 1914
LONDON
18 NOV 1912

LODYS REGISTER OF SHIPPING
RECEIVED
30 JUN 1913

RETAIN



© 2020

Lloyd's Register
Foundation