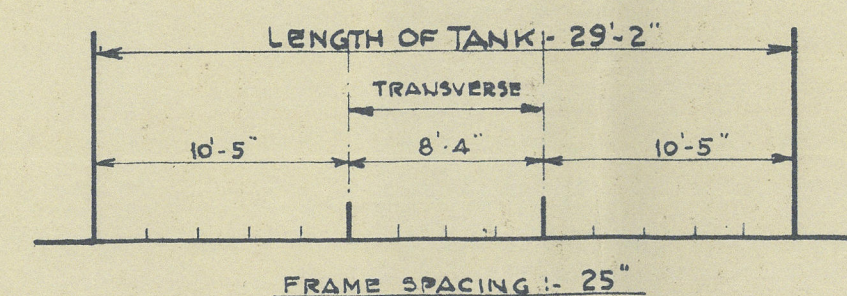
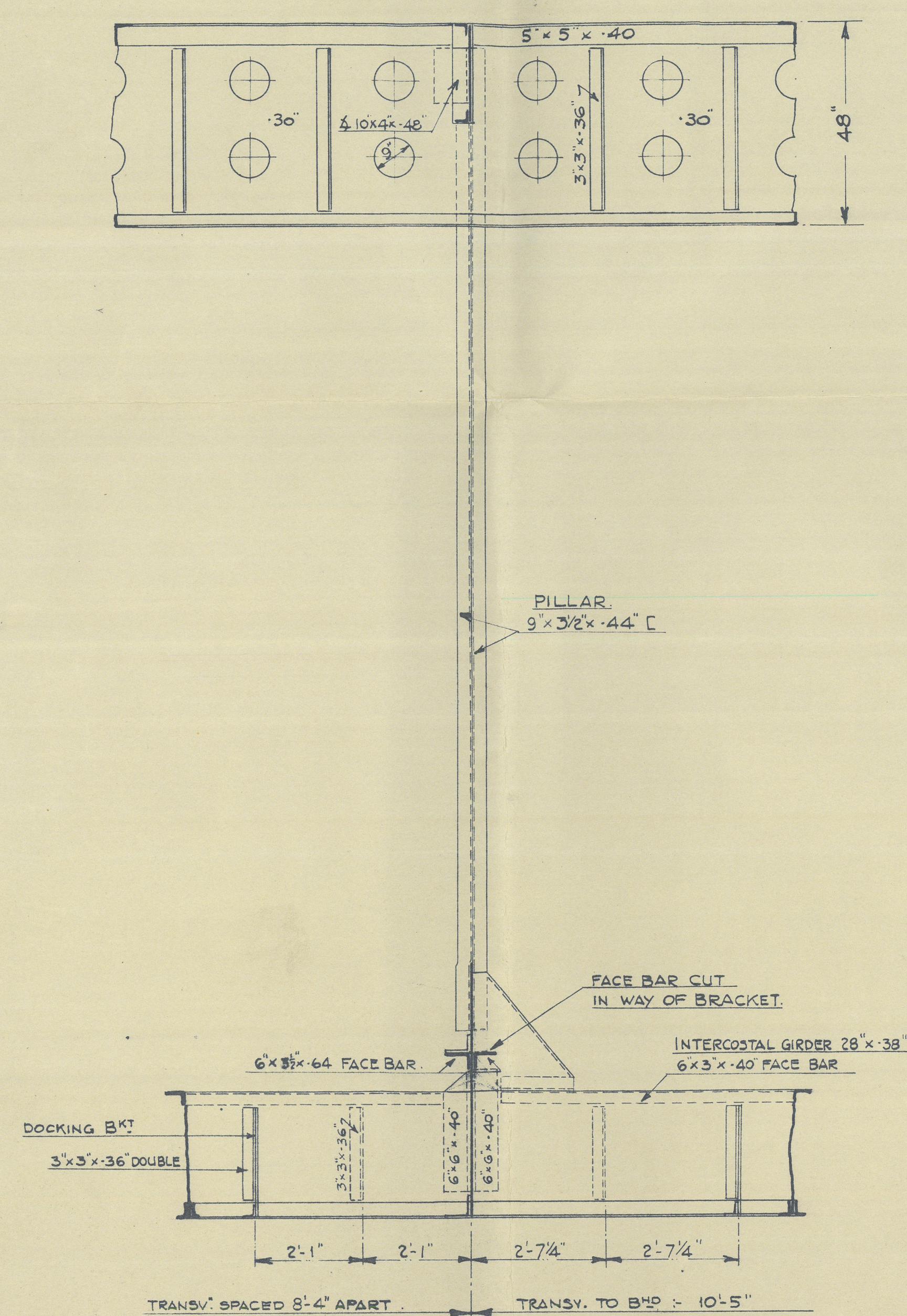


— PRINCIPAL DIMENSIONS. —

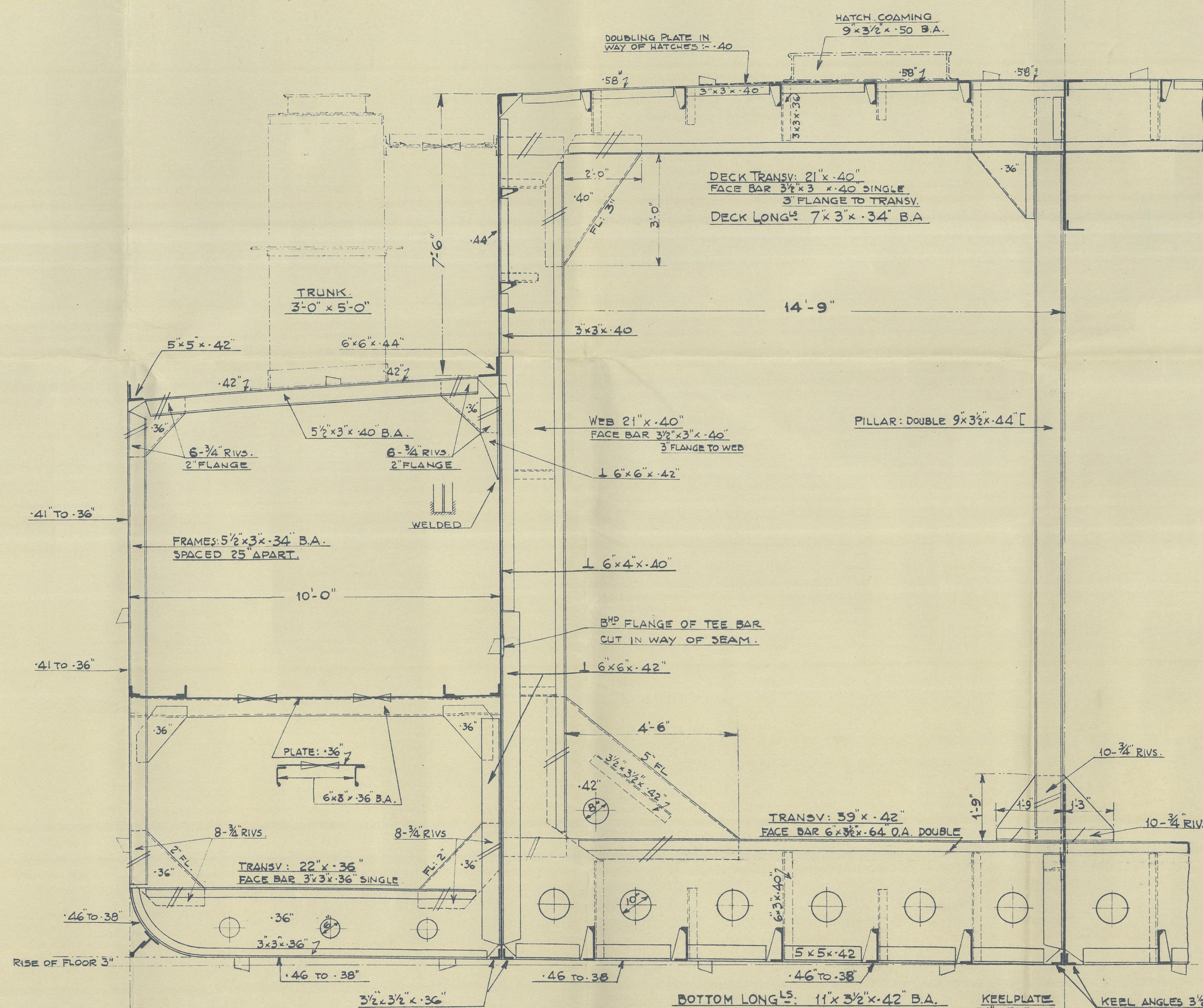
LENGTH (B.P.)	325'-0"
BREADTH (M.L.P.)	49'-6"
DEPTH (M.L.P.)	15'-0"
HEIGHT OF TRUNK:	7'-6"
BREADTH OF TRUNK:	29'-6"



DECK GIRDER.



— TRANSVERSE —



— CURAÇAO TANKER —

MIDSHIP SECTION.

SCALE: 1/2 INCH = 1'-0"

NOTE:-

THIS PLAN IS THE PROPERTY OF THE
ANGLO-SAXON PETROLEUM CO. LTD
AND IS ISSUED SUBJECT TO THE
REQUIREMENTS OF THE SPECIFICATION
BEING COMPLIED WITH. WITHOUT PREJUDICE

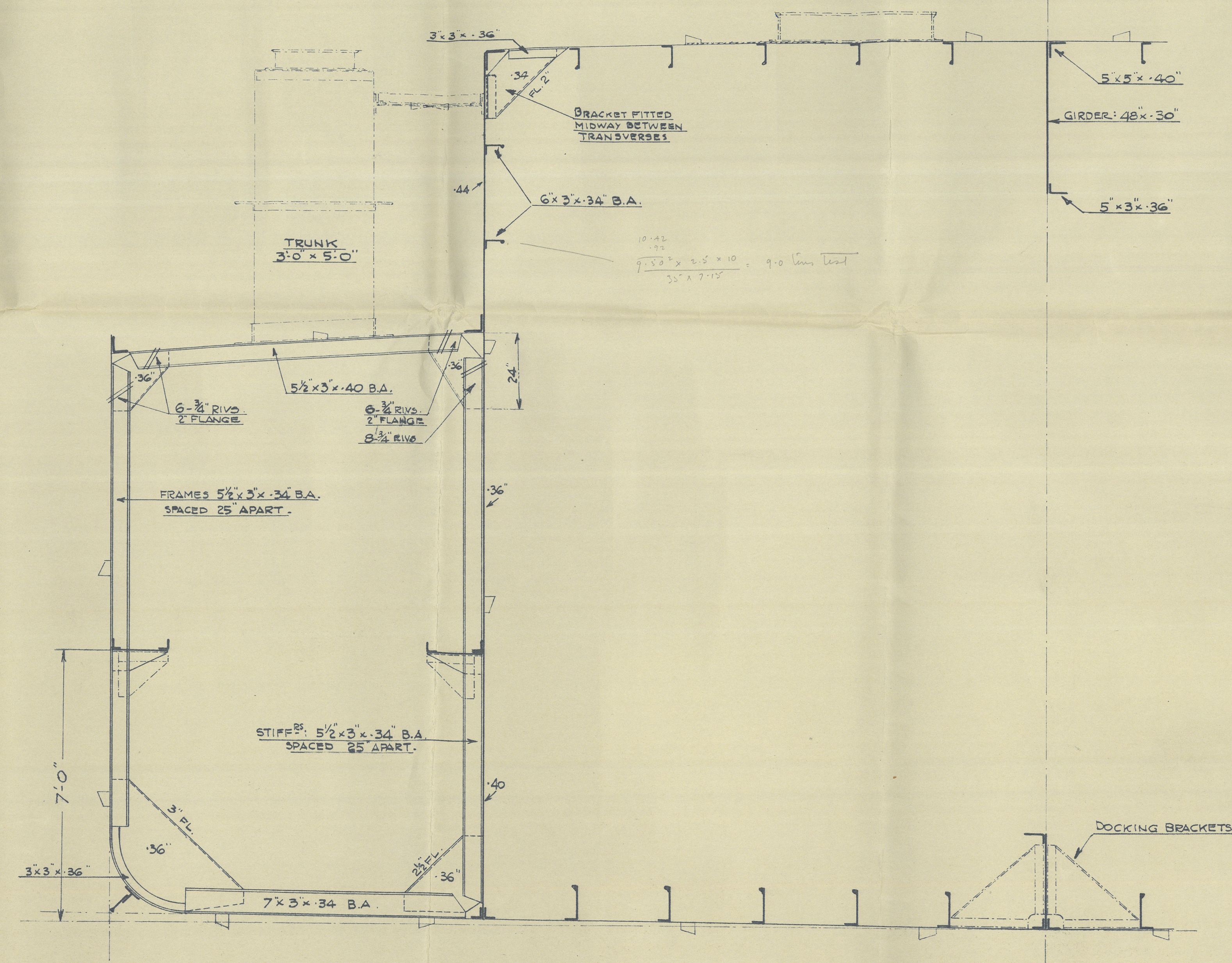
THE ANGLO-SAXON PETROLEUM CO. LTD

W. S. S. S.

MARINE SUPT.
(S. ZULVER)

16TH OCT. 1936

— INTERMEDIATE FRAME —



49.5 15

325' CURACAO VESSEL

SECTION

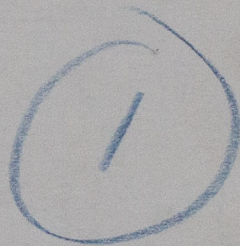
Steamship 'Gyda'

Preliminary Section

Rollinson N.A. Co. 199

556

~~556/1~~



RETAIN



© 2021

Lloyd's Register
Foundation

W1643-0225