

STEEL BOILERS NOS. ~~A 166~~ & A 168

(2 BOILERS FOR EACH SHIP)

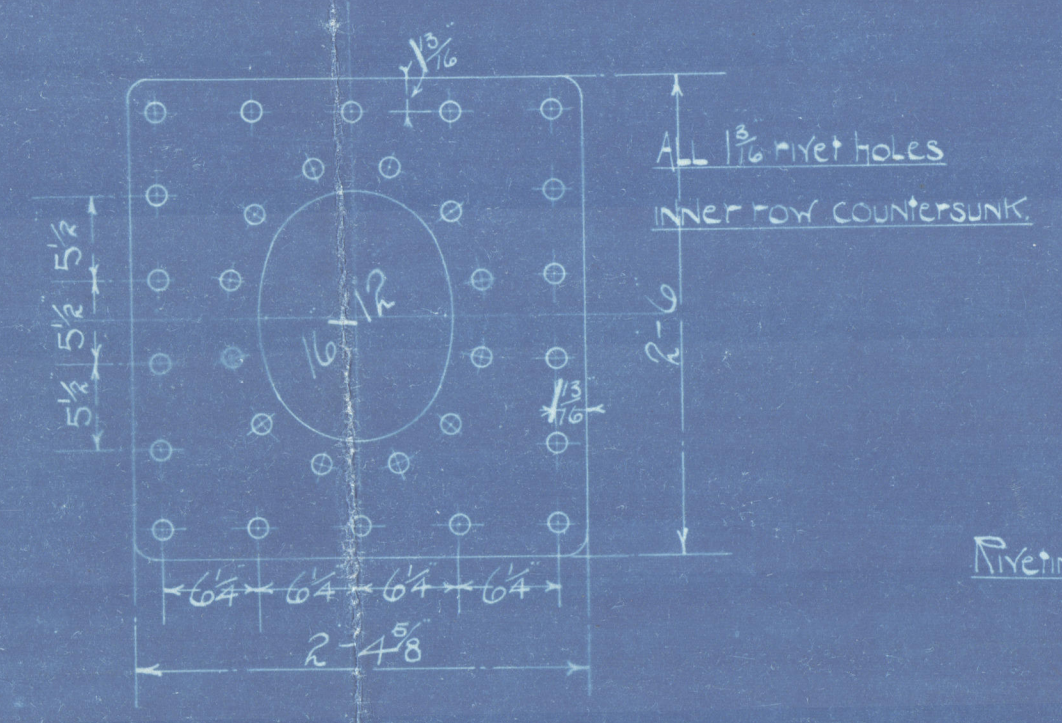
WORKING PRESSURE 180 LBS PER SQ. INCH
TEST 360

SCALE 1" TO 1 FOOT

19/11/12
LLOYD'S

Doubling plate round Manhole
1/16 thick

ALL plates stays & rivets to be of SIEMENS MARTIN steel.
ALL rivet holes throughout the boiler to be drilled after plates are bent.
The screw stays are 1 1/4" x 1 1/8" eff diam. screwed into both plates and nutted as shown.
A Manhole in shell 16x12 with shorter axis longitudinally and a doubling plate round it 2-6 x 2-4 5/8 x 1/16 thick.
All flanged plates to be annealed after flanging.



ALL 1 1/8" rivet holes
INNER ROW COUNTERSUNK

Riveting at B

1 1/8" holes 3/4" pitch

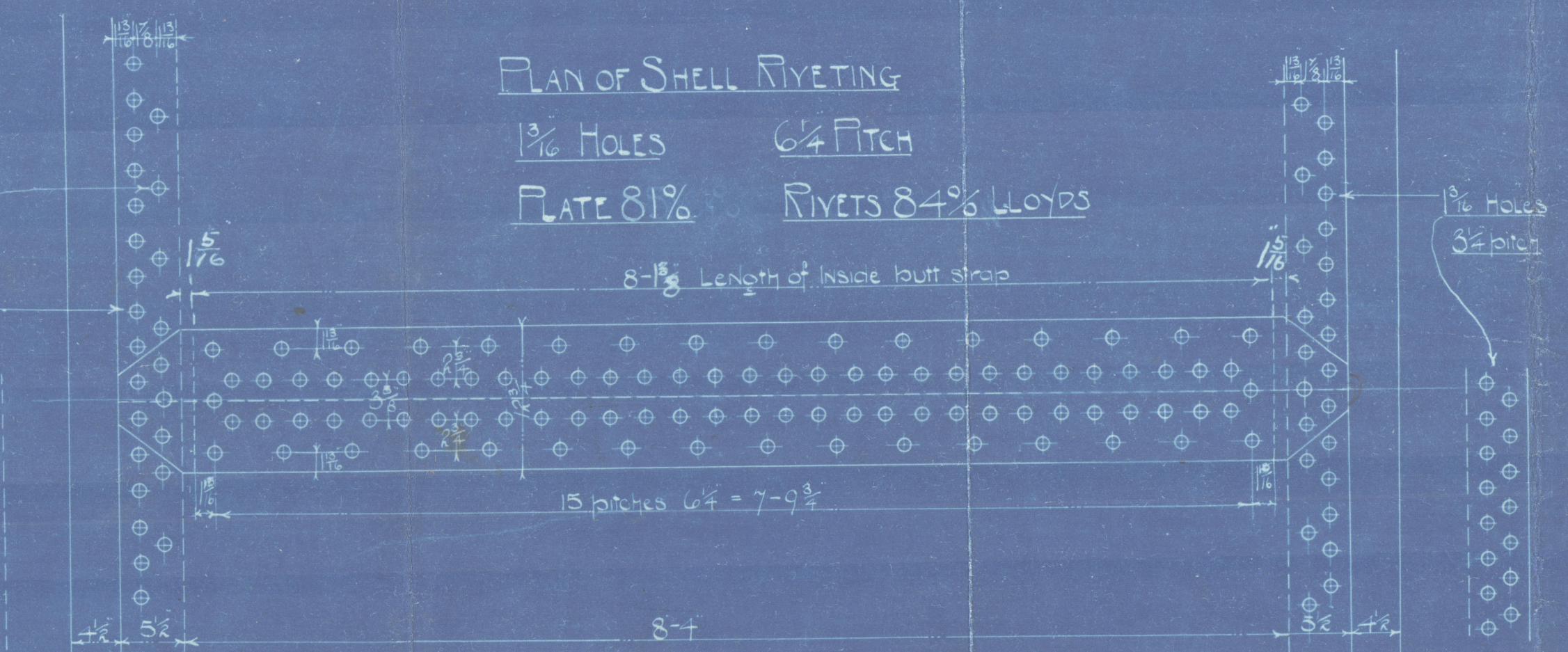
Riveting at A

Shell 5/16" Thick
Inside butt straps 15/16"
Outside 3/4"
Tensile strength 28 to 32 tons

PLAN OF SHELL RIVETING

1 1/8" HOLES 6 1/4" PITCH

PLATE 81% RIVETS 84% LLOYDS

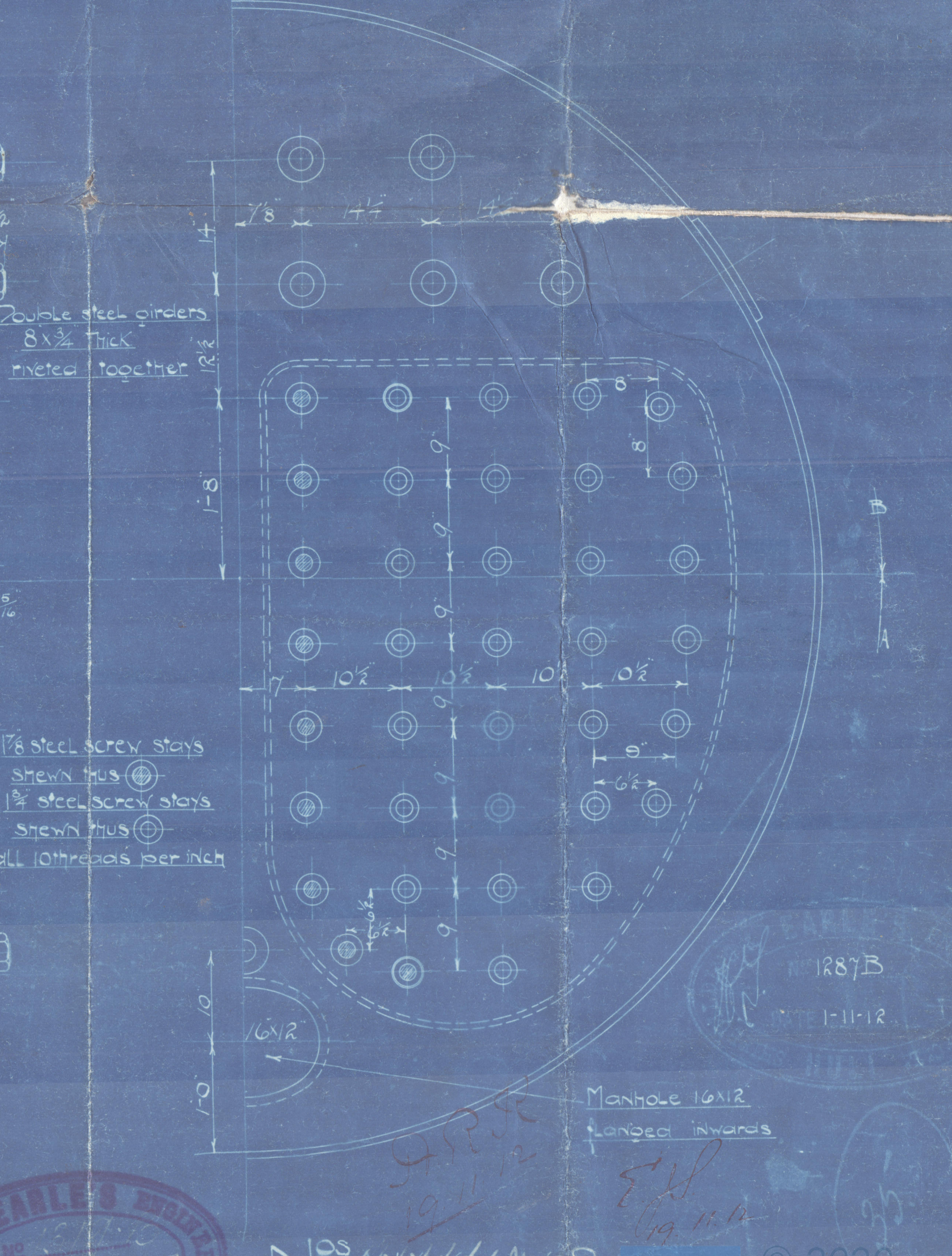
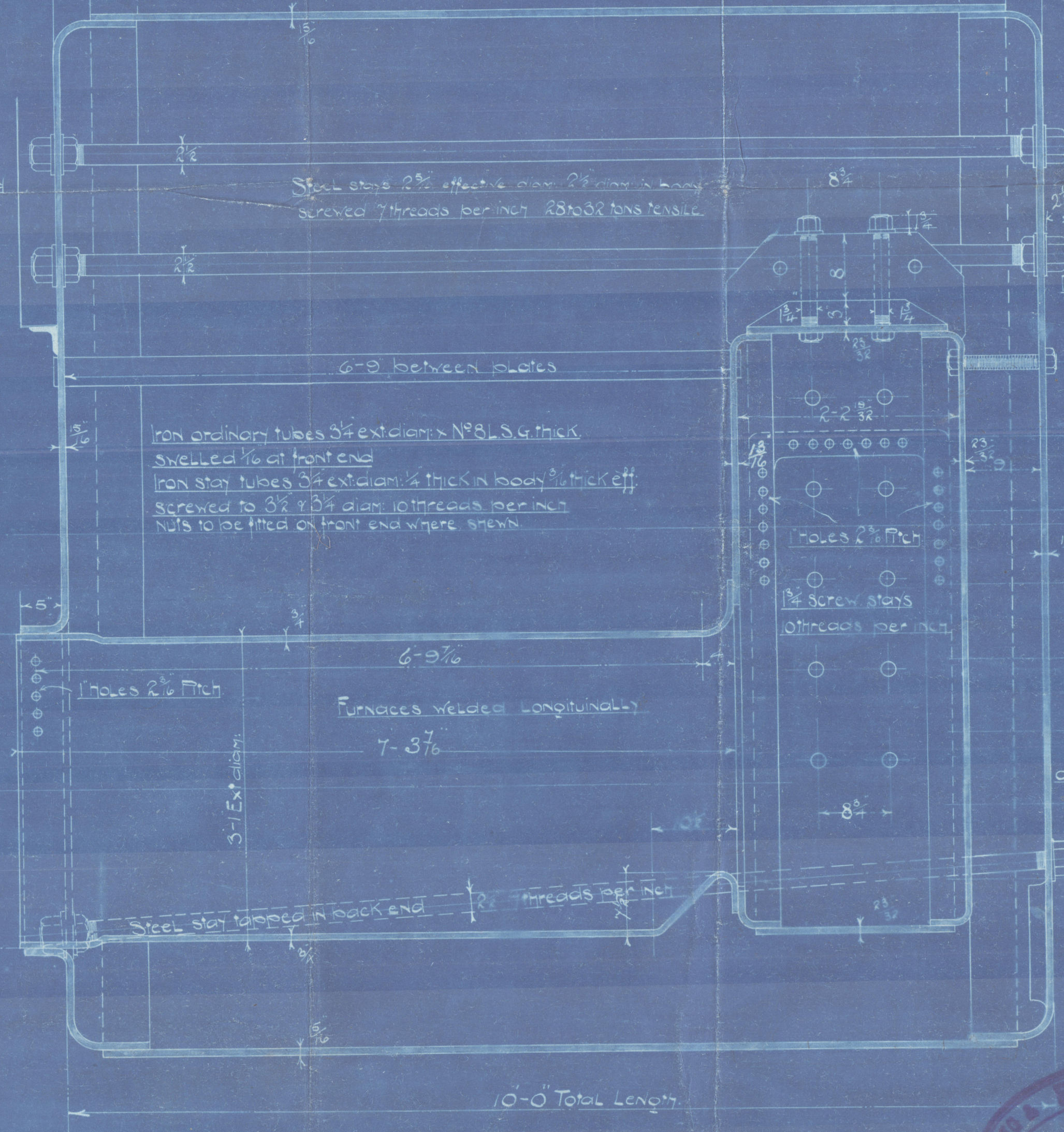
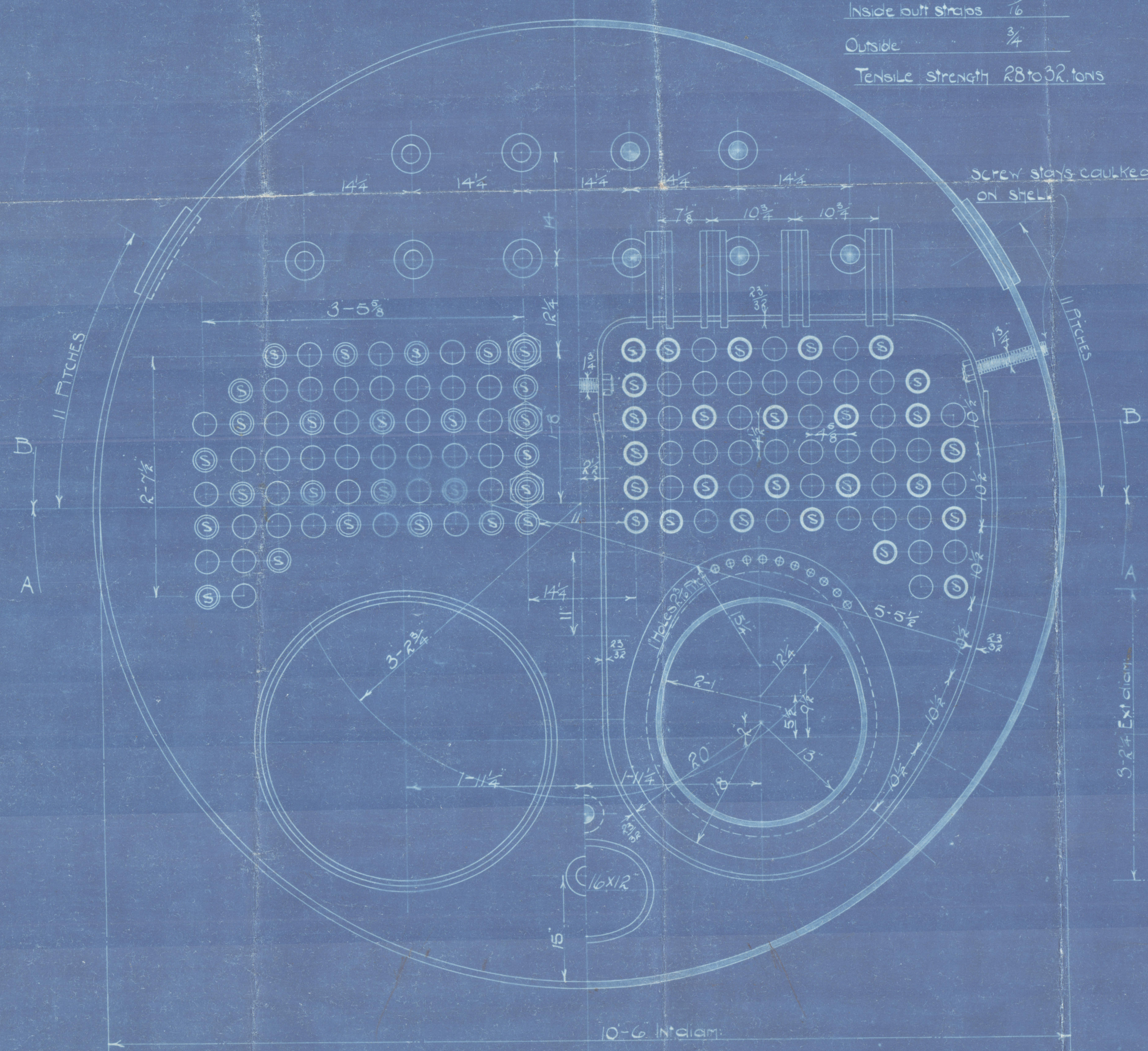


DIMENSIONS

LENGTH OF FIRE BARS
AREA OF FIRE GRATE
DIAM. OF TUBES OUTSIDE
LENGTH OF TUBES bet. plates
NO. OF TUBES
AREA THROUGH TUBES
SURFACE OF TUBES
TOTAL HEATING SURFACE
WORKING PRESSURE

1 Boiler	2 Boilers
3 1/4	3 1/4
6-5	6-5
124	248
5-5 1/2	11 1/2
7/3 1/2	1428 1/2
900 1/2	1800 1/2
180 Lbs.	180 Lbs.

Approved by Surveyor 4-11-1912
Approved by Engineer 6-11-1912



W. & A. EARLE'S ENGINEERING
No. 371
DATE 4-11-1912
LLOYD'S REGISTER

NOS. ~~A 166~~ & A 168

Manhole 16x12
flanged inwards

Merr. Eames S.W. 76. 10. 5

Boiler No. A168

Working pressure 180 lbs per sq. in

NN O'Penside

16 NOV. 1912

Guilder Rose

Hull Report No. 26878.

Rot. 8809.

No. 2022

Lloyd's test

3 bolts

6-10-13 FLS

LLOYD'S REGISTER
OF SHIPPING.

15 NOV 1912

HULL

RETAIN

LR

© 2020

W1642's Register
Foundation