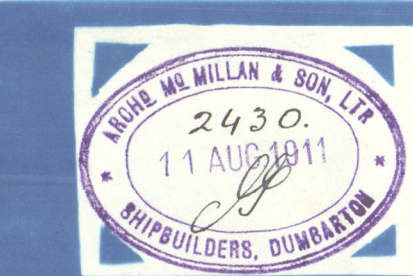


31.8.11

PROFILE
S.S. No 444

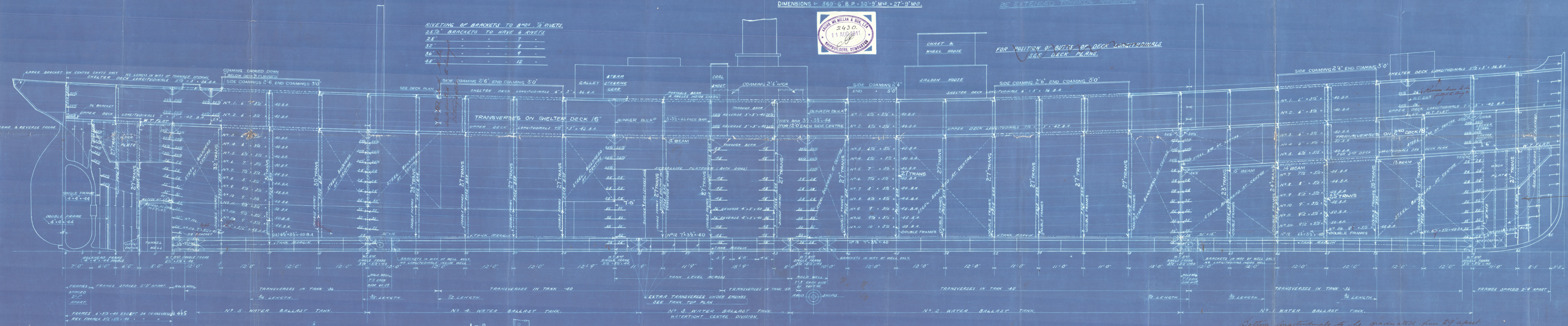
SCALE: 1/8" = 1' 0"

DIMENSIONS: 369' G.B.P. 50' 9" M.W. 27' 9" M.S.



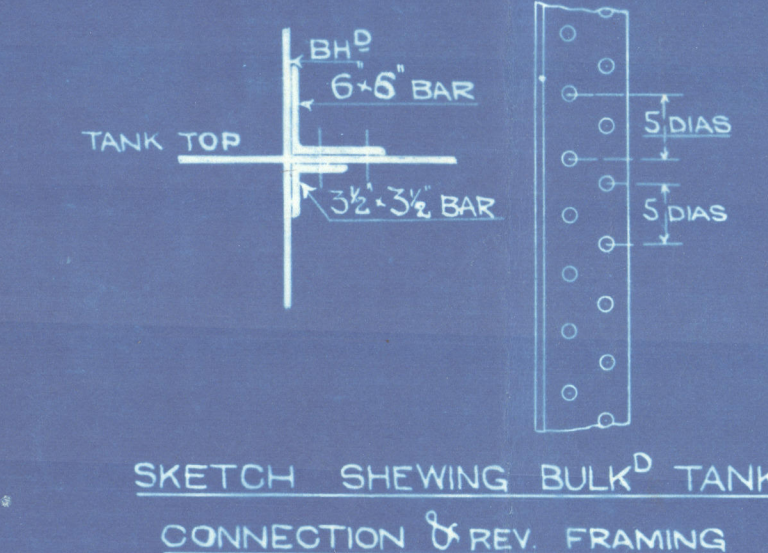
NOTE: LONGITUDINALS NO. 1 & 11 MAY
BE EXTENDED TOWARDS AMIDSHIP.

FOR POSITION OF BUTTS OF DECK LONGITUDINALS
SEE DECK PLANS



RIVETING OF BRACKETS TO B'YS 1/2 RIVETS
25 1/2" BRACKETS TO HAVE 6 RIVETS

28"	7
32"	8
36"	9
48"	12



FOR BUTTS OF LONGITUDINALS SEE SHELL PLAN
FOR SIZE OF BOTTOM LONGITUDINALS SEE SHELL PLAN

BOTTOM LONGITUDINALS 7 1/2" x 3 1/2" 44 TO 7 1/2" x 3 1/2" 40
TANK TOP 7 1/2" x 3 1/2" 40 TO 7 1/2" x 3 1/2" 40

Bottom longitudinals to be graduated from 29' apart
at Bulkhead No. 60 to 24' apart at stern end.

Note
For amendments in fore
head see details plan

Anna

Anna Maria Kinnunen

Amended Profile

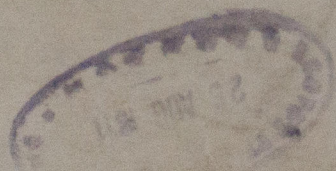
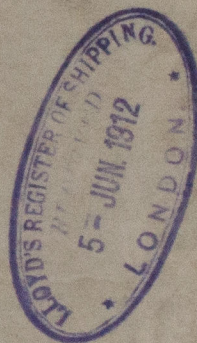
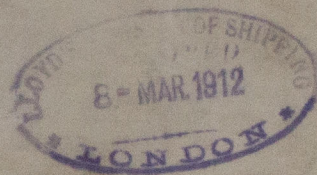
Master A. M. Millan & Son Ltd

S.S. No. 444

ANNA MARIA KINNUNEN

S/S "Kirkoswald"

GLASGOW REPORT No: 31509



RETAIN



© 2020

W1642-0088

Lloyd's Register
Foundation