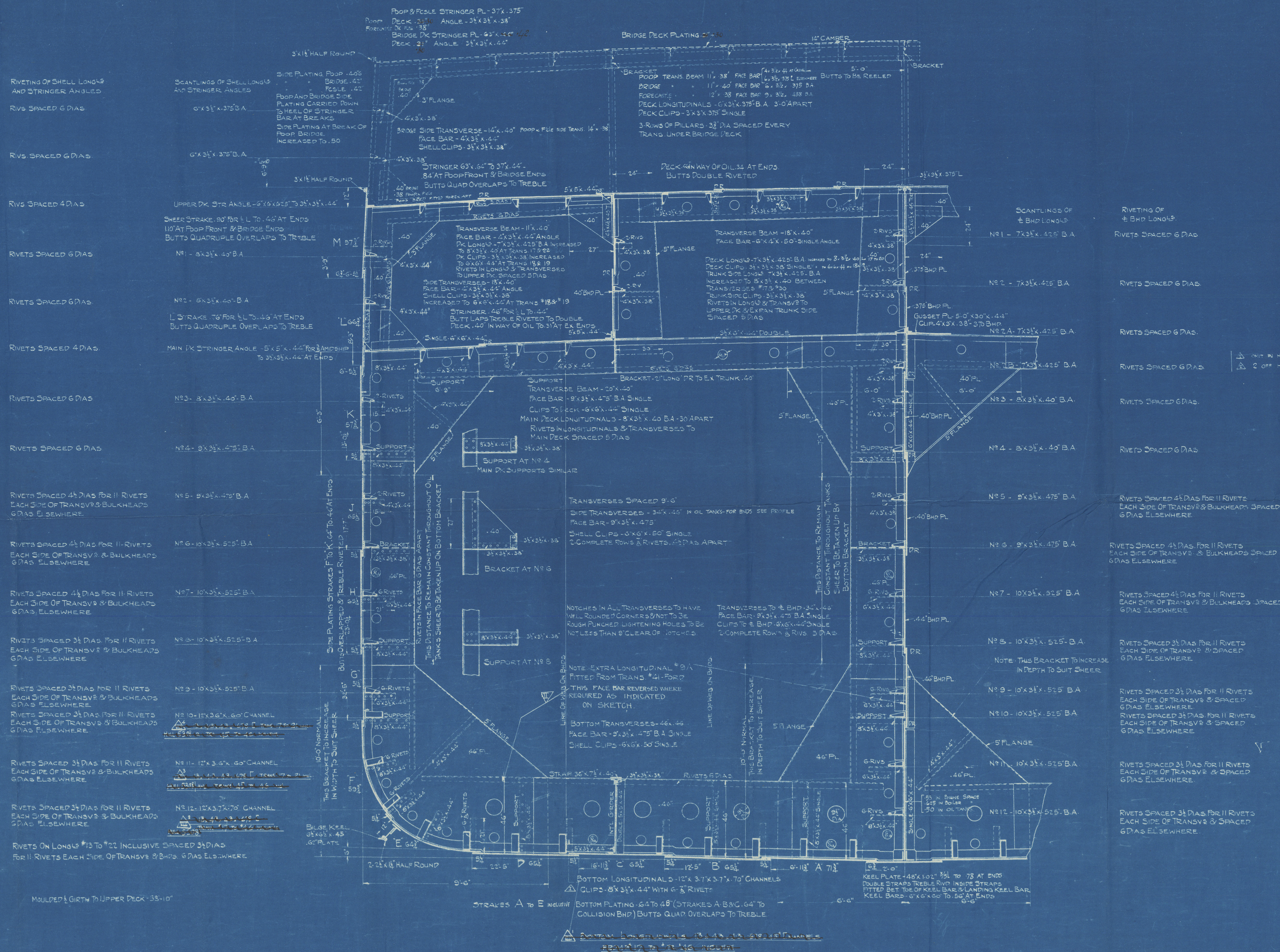


ALT. No.	ALTERATION	APPROVED BY	DATE
1	CLIPS CHANGED TO 6X3 1/2 X 44; PROTECT SHEET ADDED		1.28.20
2	WATER ADDED		
3	HULL 5307 ADDED		6/1/21
4	DUPLICATE NO 5308 ADDED		6/2/21
5	1 INCHUTE AVISOR, DIMENSION HULL 5308 8960"		
6	ONE 8100 BOWES AVISOR AND HULL 5307		
7	SECTIONS BROUGHT UP TO DATE FOR HULL 5308		
8	BOTTOM LONGITUDINALS TO 13' 21" HULL 5308 CHANGED IN SCANTLING		



GENERAL DIMENSIONS

LENGTH B.P.	435'-0"
BEAM MLD.	56'-0"
DEPTH MLD TO UPPER DECK	33'-0"

LLOYD'S NUMERALS

B+D-89.5-TRANSV.	(B+D)XL	3.8932-LENGTH N2
DEPTHS TO LENGTH		12.98

EQUIPMENT NUMBER

(B+D)XL	38932
POOP BRIDGE, FORECASTLE	1297
E/B CASING & MIDSHIP HOUSE	476
EQUIPMENT NUMBER	49675
EQUIPMENT LETTER	49

STEM, STERNPOST, ETC.

STEM	10'x42"
PROPELLER POST	10'x8"
RUPPER POST	9'x8"
FRAMES IN PEAK 7'x3 1/2'x44" Rev 3'x3'x38" 24" APART	
DEPTH OF FRAMING 6" FLOORS IN PEAK 1'x40" FORE 38" AFT	

ANCHORS & CHAINS

1-BOWER ANCHOR STOCKLESS	8960"
1-BOWER ANCHOR STOCKLESS	8120"
1-BOWER ANCHOR STOCKLESS	6944"
1-STREAM ANCHOR STOCKLESS	2870"
1-KEDGE ANCHOR STOCKLESS	1260"
300 FATHOMS 1 1/2" STUD LINK CHAIN CABLE	
120 FATHOMS 5" STEEL WIRE STREAM LINE	
130 FATHOMS 5" STEEL WIRE TOW LINE	
HAWERS: 2 LENGTHS-8 MANILA EACH LENGTH 100 FATHOMS	
WARPS: 2 LENGTHS-8 MANILA EACH LENGTH 100 FATHOMS	

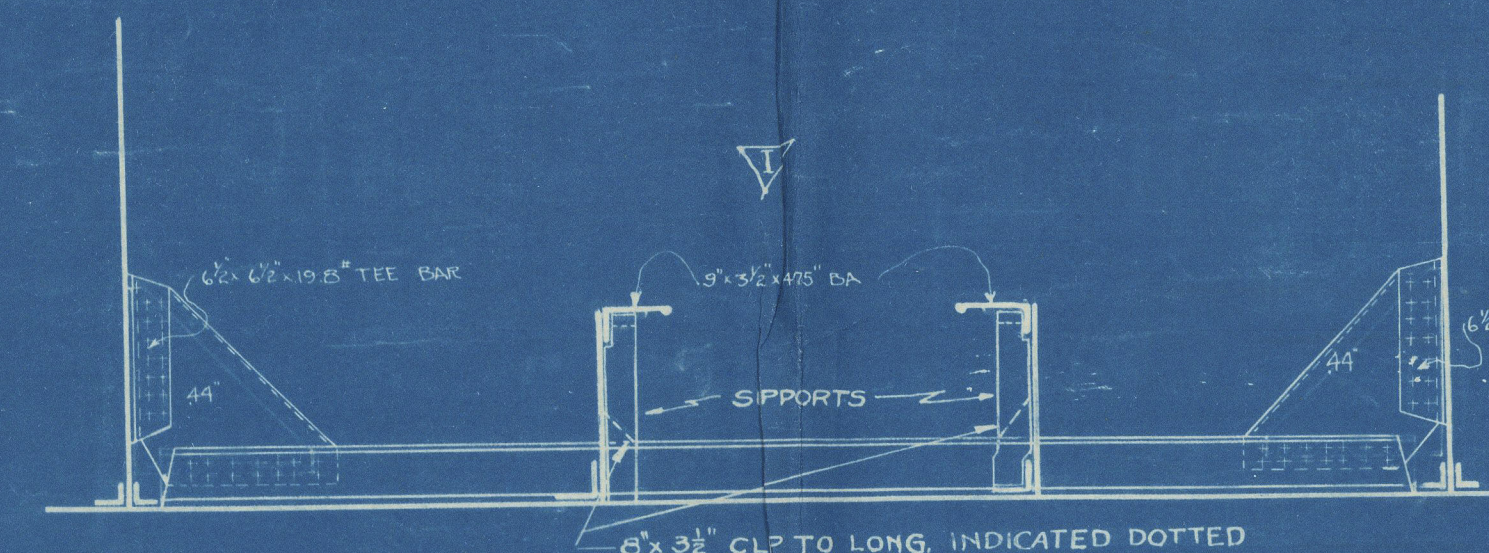
TO CLASS A-1

GENERAL NOTES

- THIS PLAN IS AN EXACT DUPLICATE OF PLAN H-4203-11-2 MIDSHIP SECTION FOR H-4177 WITH EQUIVALENT STANDARD BETHLEHEM SECTIONS FOR ALL SCANTLING. SUBSTITUTED FOR CARNegie SECTIONS.
- THIS PLAN TO BE USED AS A REFERENCE ONLY. SEE WORKING DRAWINGS FOR ALL DIMENSIONS AND DETAILS.

YORBA LINDA
HULL NO 5307

NOTE:
FACE BAR, BOTTOM LONG CLIPS AND SUPPORTS ON TRANSV. TO FACE EACH OTHER IN WAY OF OIL TANKS-AS INDICATED ON SKETCH BELOW



DUPLICATE FOR H-5301
DUPLICATE FOR H-5302
DUPLICATE FOR H-5303
DUPLICATE FOR H-5307
DUPLICATE FOR H-5308

DUPLICATE TRACING SENT TO SPARROWS POINT PLANT
DUPLICATE TRACING SENT TO UNION PLANT DEC. 19, 1919.

H-4203-11-2 SPARROWS POINT

BETHLEHEM SHIP-BUILDING CORP., LTD.
BETHLEHEM, PA.

MIDSHIP SECTION

SCALE 1/4"=1 FOOT	DATE 5-0-19
DRAWN	APPROVED
TRACED 152	APPROVED
CHECKED	APPROVED

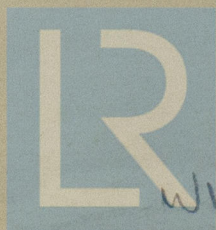
Midship Section of Ship as
built

S/S. YORBA LINDA

Bethlehem S. S. Corp^{ts} Alameda. Cal.
Hull N^o 5304.

San Francisco. Apt N^o 3446.

RETAIN



© 2020

Lloyd's Register
Foundation

W1641-0107