

# N<sup>o</sup>899. MIDSHIP SECTION.

SCALE: 1/2 INCH=1 FOOT.

DIMS. 290'-0" x 47'-0" x 19'-6" MLD  
LLOYDS CLASS 100 A.I. (WITH FREEBOARD)  
CARRYING LIQUID ASPHALT IN PORTABLE TANKS.

DRAFT 15'-6".

ROUND OF BEAM 12" IN 47'-0".

## NUMERALS.

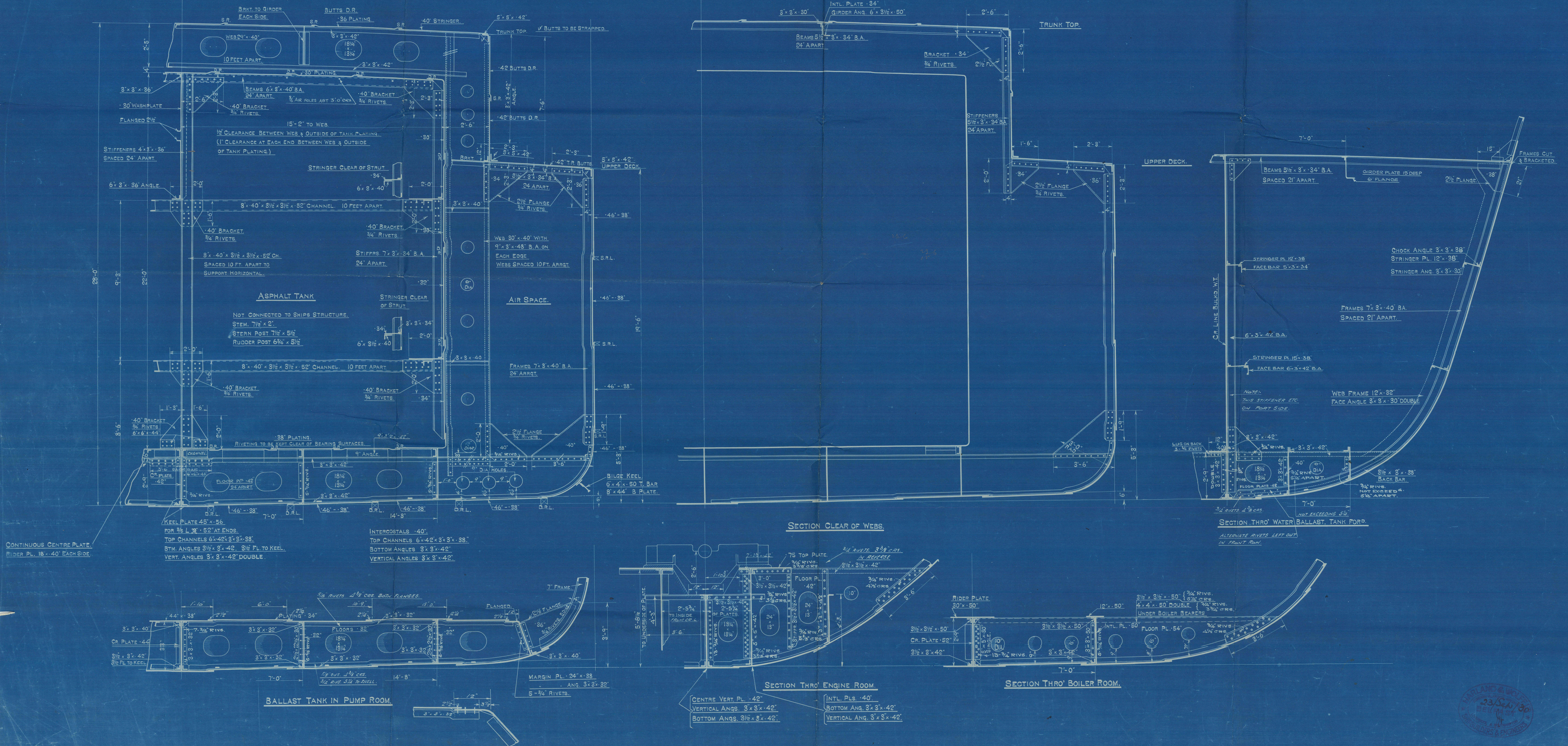
D ..... 19-5  
L x D ..... 290 x 19-5 = 5655.  
L x [B + D] ..... 290 x [47 + 19-5] = 19285.  
L/6 [TRUNK TOP] ..... 290 / 6 = 10-54.

## EQUIPMENT NUMBER.

HULL ..... 19285  
POOP ..... 82-5 x 7-5 x 7-5 = 464  
EXTENSION TRUNK. 168-0 x 7-5 x 5-0 = 630  
FORECASTLE. 39-5 x 7-5 x 7-5 = 222  
BOAT DECK ..... 52-0 x 7-5 x 5-0 = 195  
20796

## EQUIPMENT.

3 BOWER ANCHORS EACH 40 CWTs. STOCKLESS.  
1 STREAM ..... 11 CWTs. EX. STOCK.  
240 FATHOMS 1 7/8" STUD CHAIN CABLE.  
75 ..... 4 1/2" STEEL WIRE.  
100 ..... 4" ..... 2 LENGTHS.  
90 ..... 2 1/2" ..... 2  
90 ..... 2 1/4" ..... 2





Harland & Wolff Ltd

Nº 899

EBANO

Midship Section as built.

N/N

PETROPHALT

RETAIN



© 2021

Lloyd's Register  
Foundation

W1636-0222