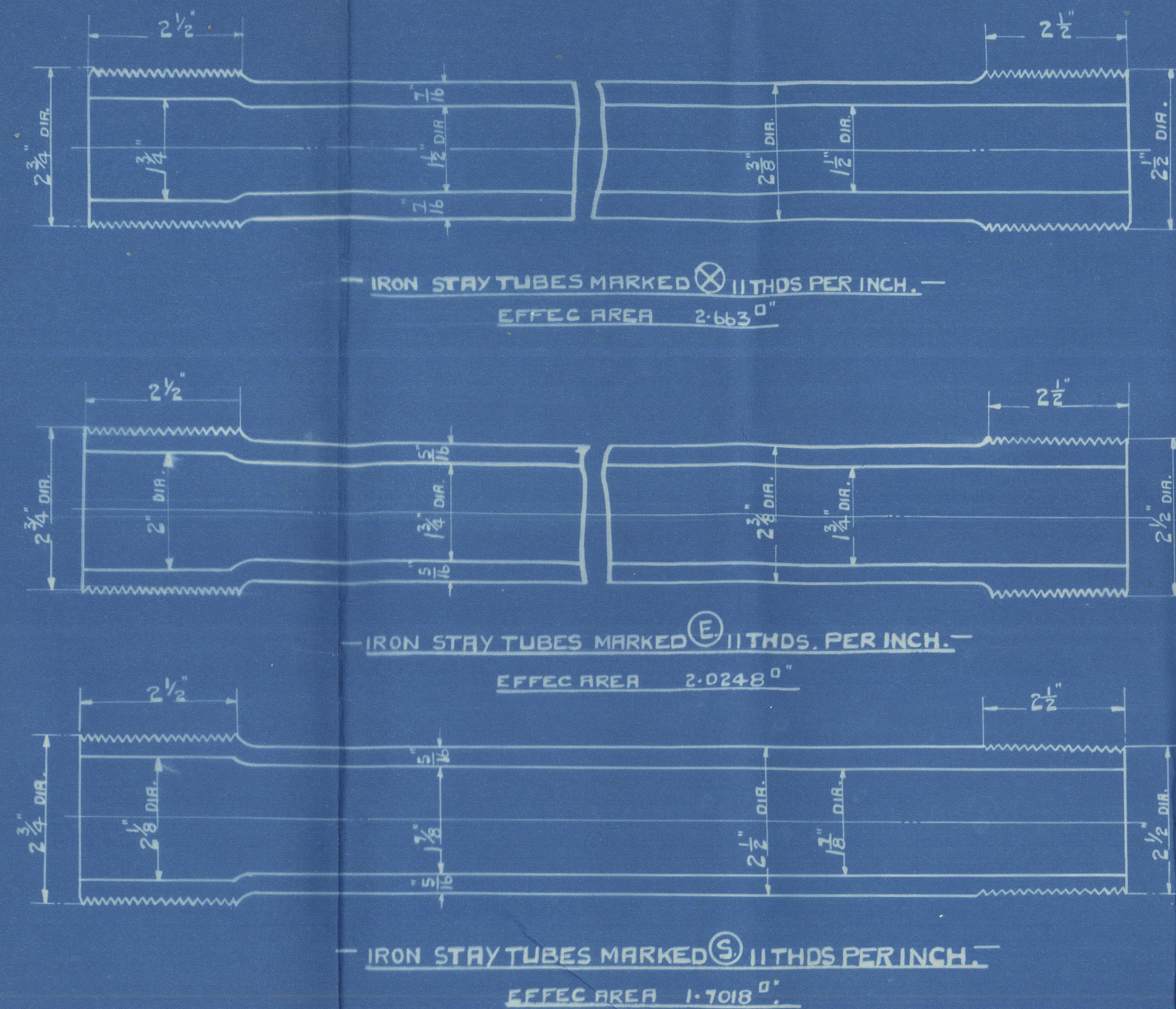


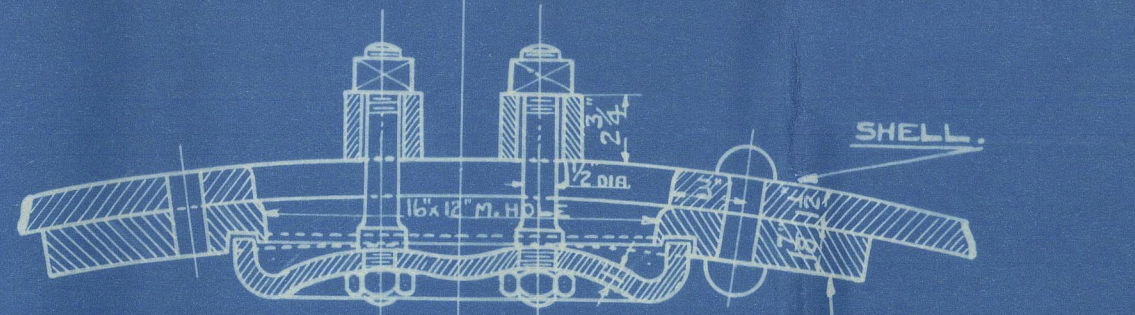
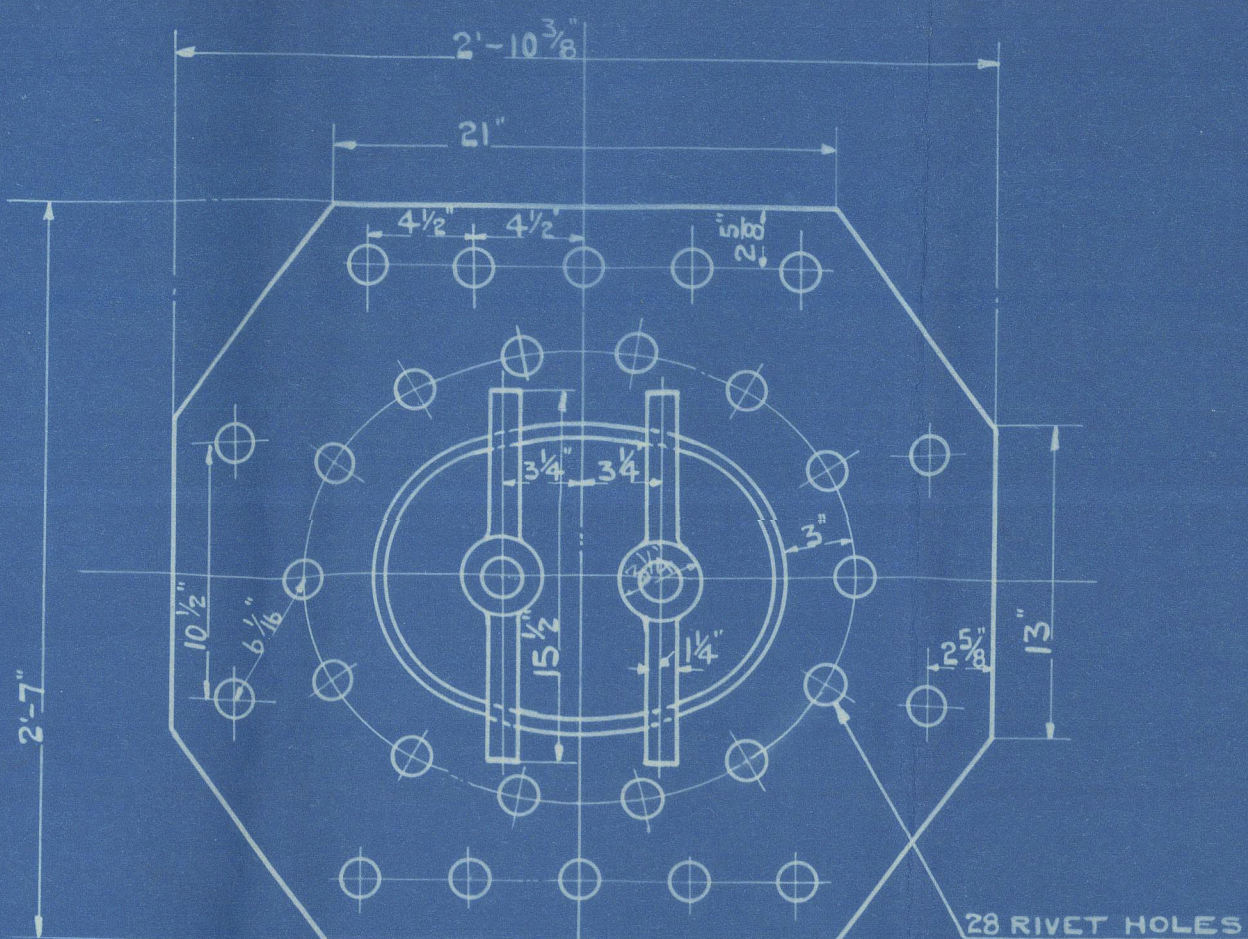
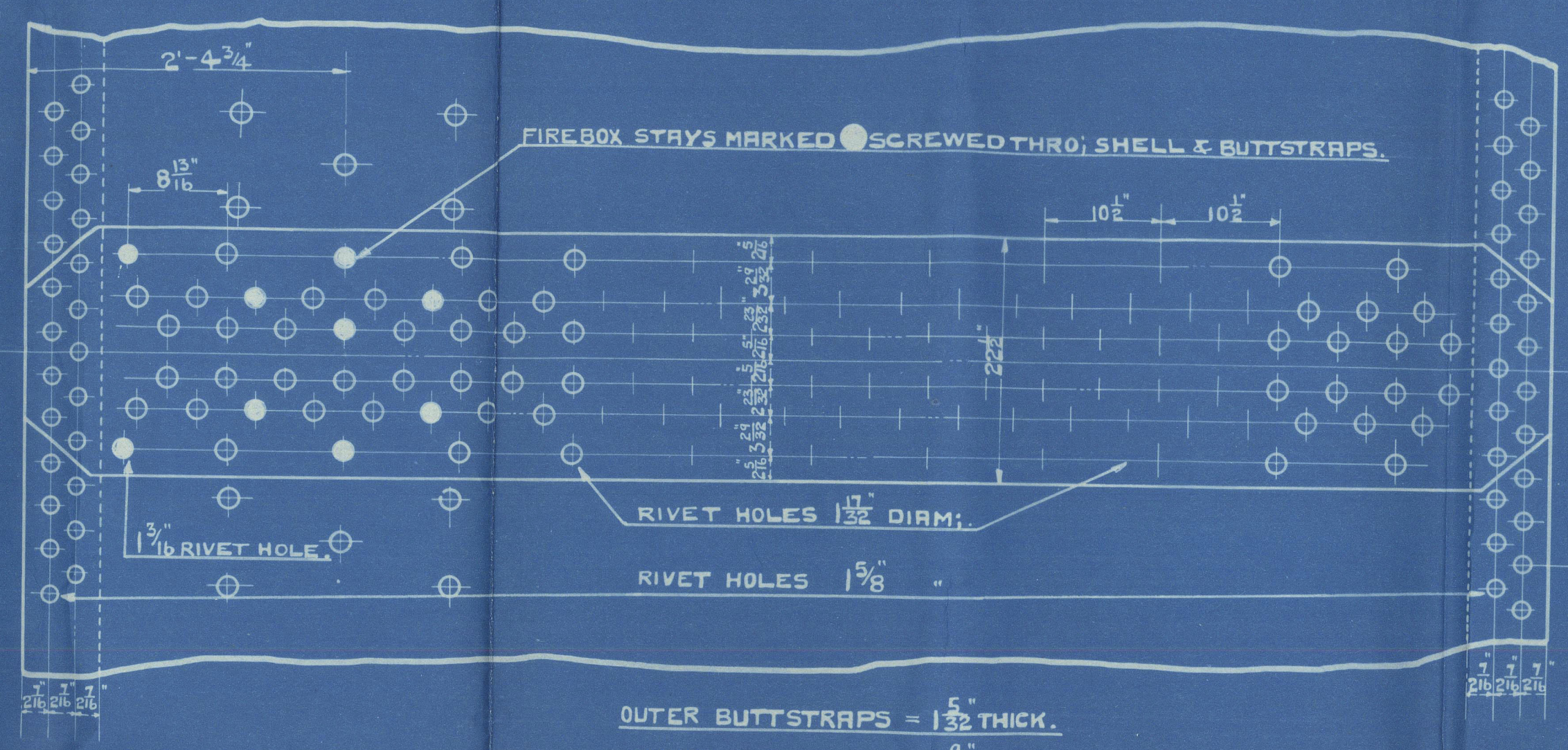
HEATING SURFACE. — SQ. FT. —  
 338 TUBES 7'-8" LONG X 2 1/2" EXT. DIA. = 2659.  
 4 FURNACES 4'3" HIGH X 4 1/2" WIDE = 198  
 FIREBOX TOPS & SIDES = 232  
 BACKS = 80.  
 BACK TUBE PLATES = 56.  
 FRONT = 50.  
 TOTAL H.S. IN ONE BOILER = 3275.  
 FOUR BOILERS = 13100.

GRATE SURFACE. — SQ. FT. —  
 4 FURNACES 4'3" INSIDE DIA. X 5'-6" BARS = 1883.  
 TOTAL G.S. IN 4 S.E. BOILERS = 31532.  
 H.S. T.S. = 33.7  
 G.S. 4.5 = 33.7  
 STEAM SPACE FROM 9" ABOVE FIREBOX TOP = 322 CUB. FT.  
 WEIGHT OF FRESH WATER 9" = 3 1/2 TONS.  
 DRAUGHT AREA THRO' TUBES = 12.6 SQ. FT.



STEEL STEAM SPACE STAYS.  
 TENSILE STRENGTH OF STAY STAYS 32 TONS PER SQ. IN.  
 STAYS MARKED WITH SYMBOL DIA. 3/8" DIA. SCREWED 6 THDS. EFF. AREA 1.66.  
 DEPTH OF OUTSIDE NUTS = DIA. OF STAY.  
 INSIDE = 1/2".

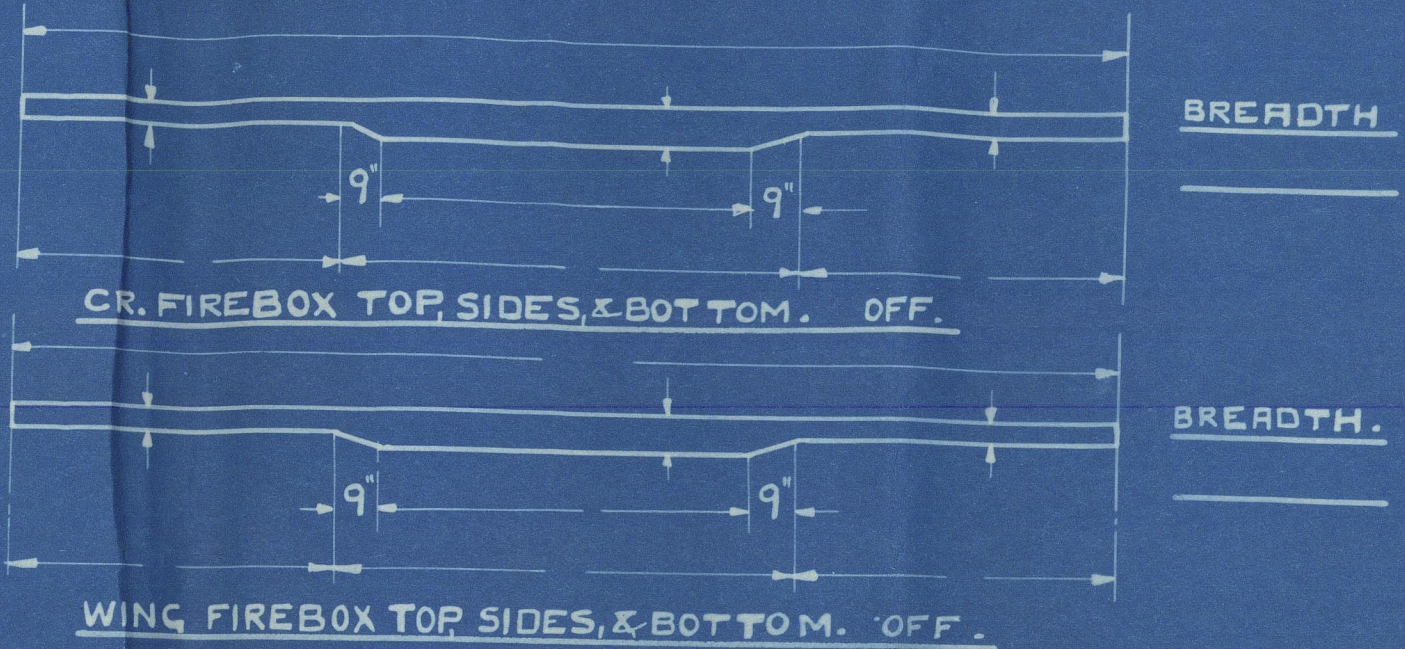
TENSILE STRENGTH OF SHELL PLATES & BUTTSTRAPS 23 TO 33 TONS PER SQ. INCH.  
 GIRDER PLATES 28 - 32  
 ALL OTHER PLATES 26 - 30  
 ALL RIVET HOLES DRILLED TO PLACE.



HAWTHORN GRAY PATENT MANHOLE DOOR  
 & COMPENSATING PLATE.

14/1/20

NO.	DESCRIPTION.	LENGTH.	BREADTH.	THICK.
A.	SHELL TOP.			
B.	" BOTTOM.			
C.	BUTTS OUTER.			
D.	" INNER.			
E.	GIRDERS.			
F.	FRONT TUBE PLATES.			
G.	CR. BACK.			
H.	WING.			
J.	CR. FIREBOX BACKS.			
K.	WING.			
L.	TOP FRONTS.			
M.	FURNACE FRONTS.			
N.	TOP BACKS.			
P.	BOTTOM BACKS.			



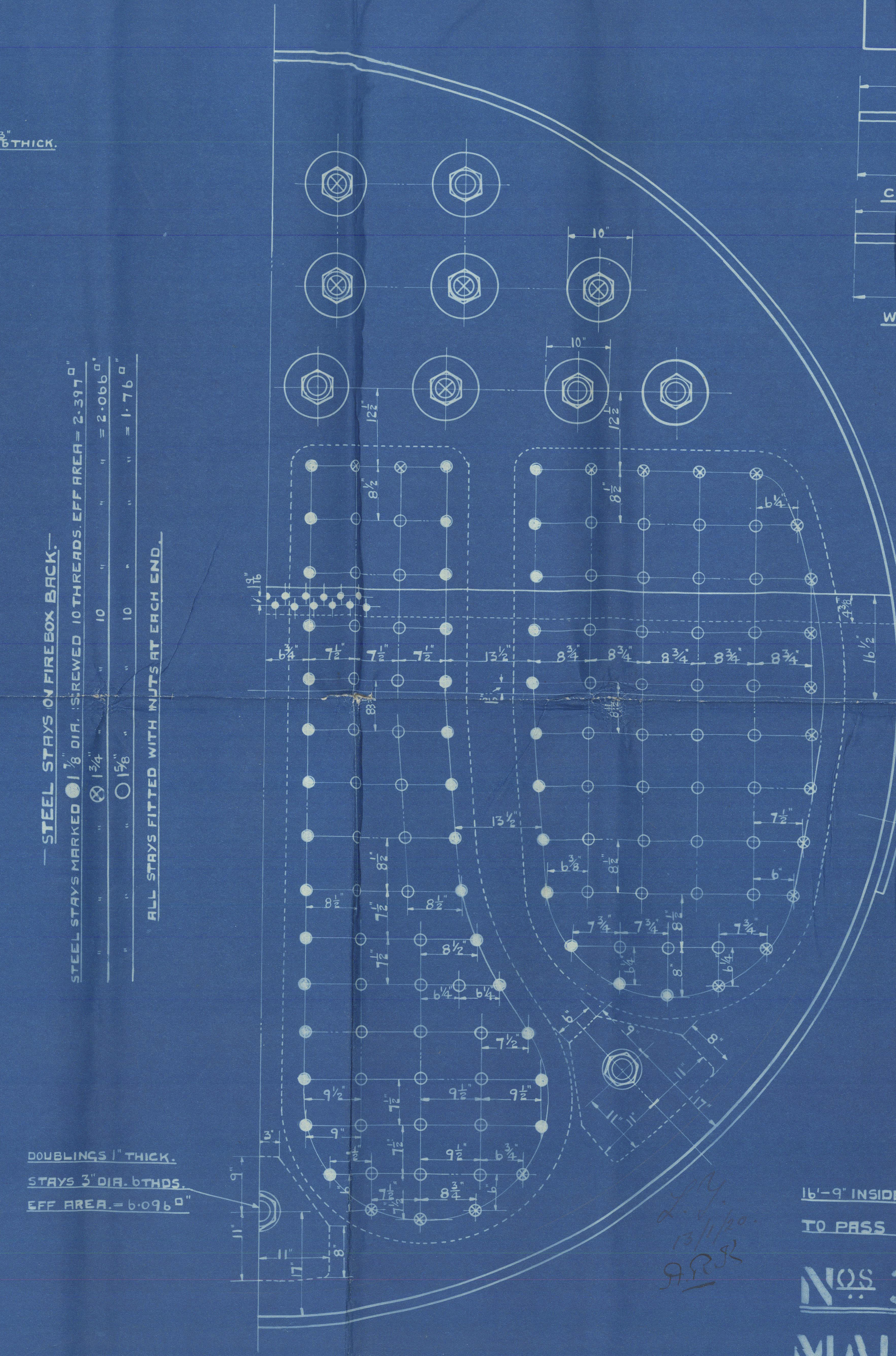
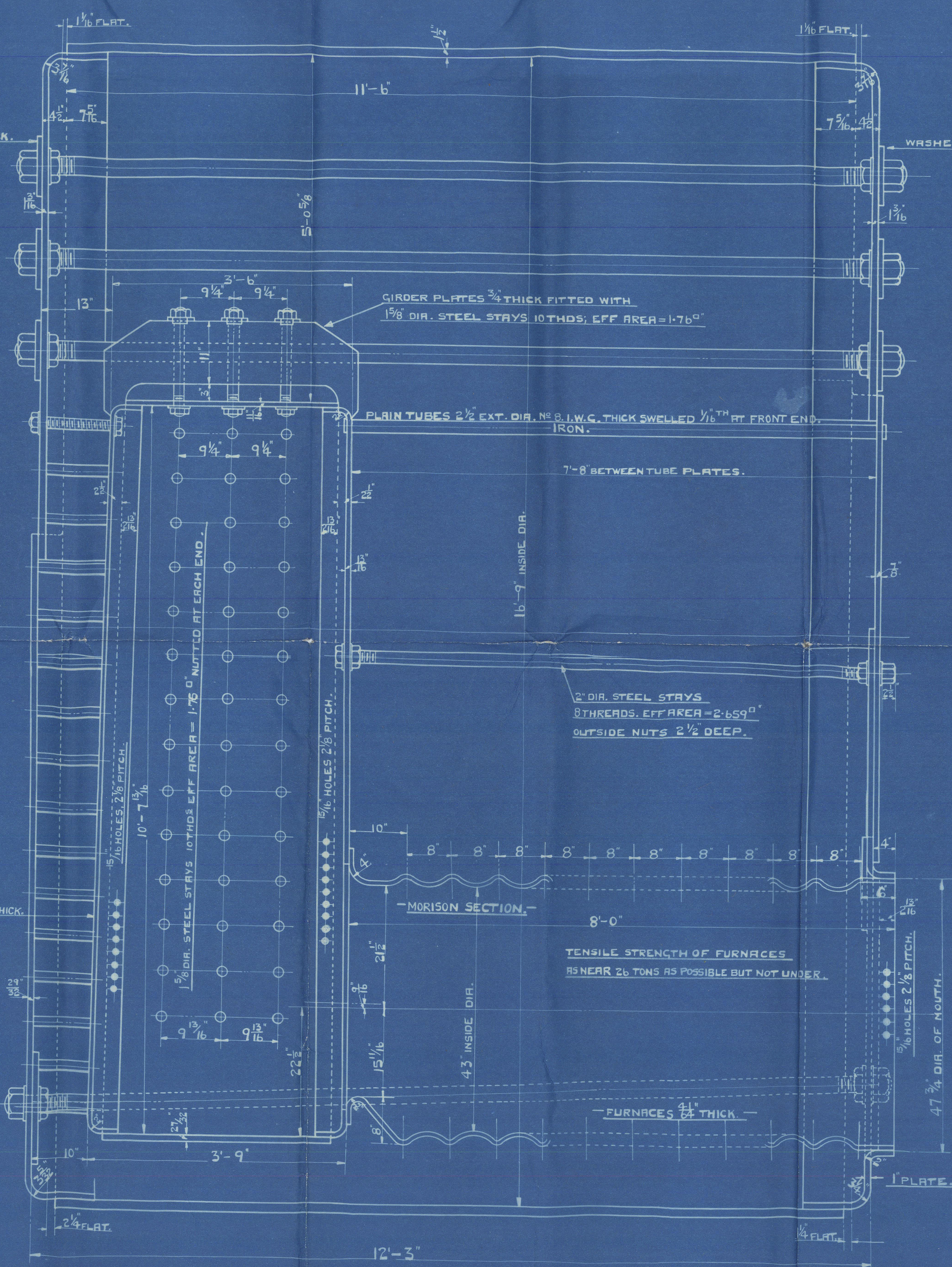
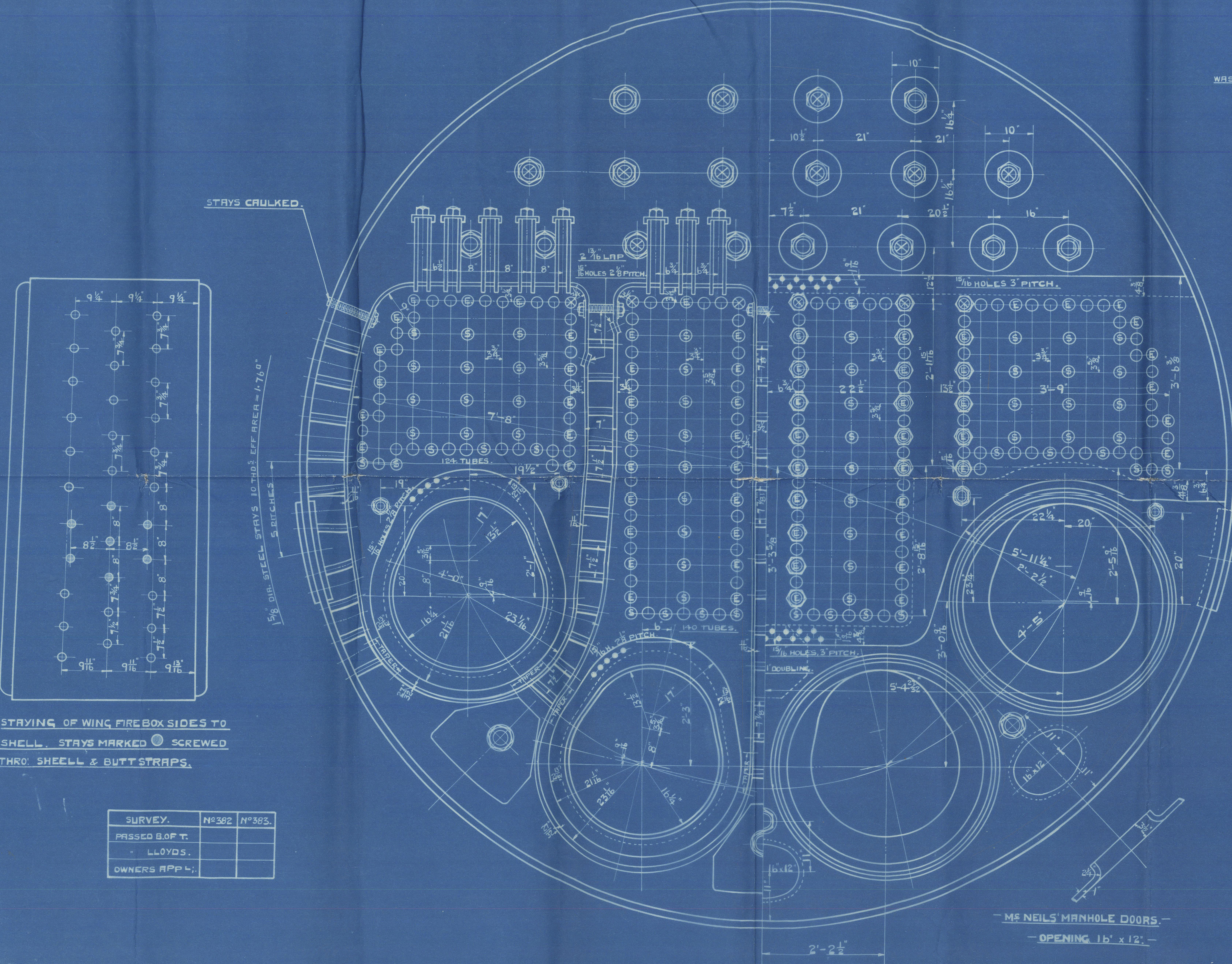
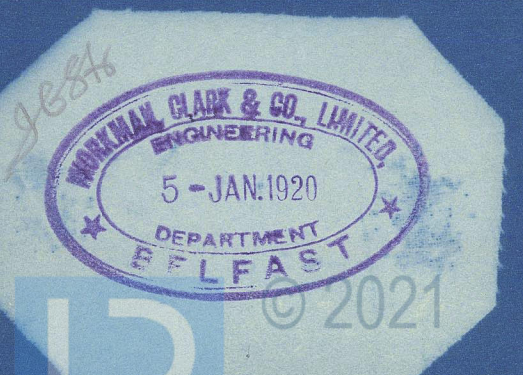
NO.	DESCRIPTION.	LENGTH.	DIA.
	STEAM SPACE.		
	WATER SPACE.		
	BREAST STAYS.		
	SCREWED STAYS.		

WORKMAN, CLARK & CO. LTD.  
 ENGINE DEPT. BELFAST.  
 DRAWING NO. 23480, DATE 22-12-19.  
 DRAWN BY  
 CHECKED BY  
 TRACING CHECKED BY

16'-9" INSIDE DIA. X 12'-3" LONG X 200 LBS. W.P.  
 TO PASS "BOARD OF TRADE" & LLOYDS SURVEYS.

NO. 382-383.  
 MAIN BOILERS.

SCALE: 1" = 1' IF



SURVEY.	NO. 382	NO. 383
PASSED BY		
OWNERS APP.		

ALL MATERIAL STEEL EXCEPT TUBES WHICH ARE IRON.

FOUR BOILERS THUS FOR EACH NO. HYDRAULIC TEST = 350 LBS. PER SQ.



Belfast

Wickman Can Bk.  
T.S.S. 382-3

Main Boilers  
T.S.S. Port Campbell.  
T.S.S. "Port Auckland"

Belfast Rps. N<sup>o</sup> 8465

- - - 8477

Boiler returned to  
Belfast 3/10

RETAIN

© 2021

Lloyd's Register  
Foundation

W1634-0269