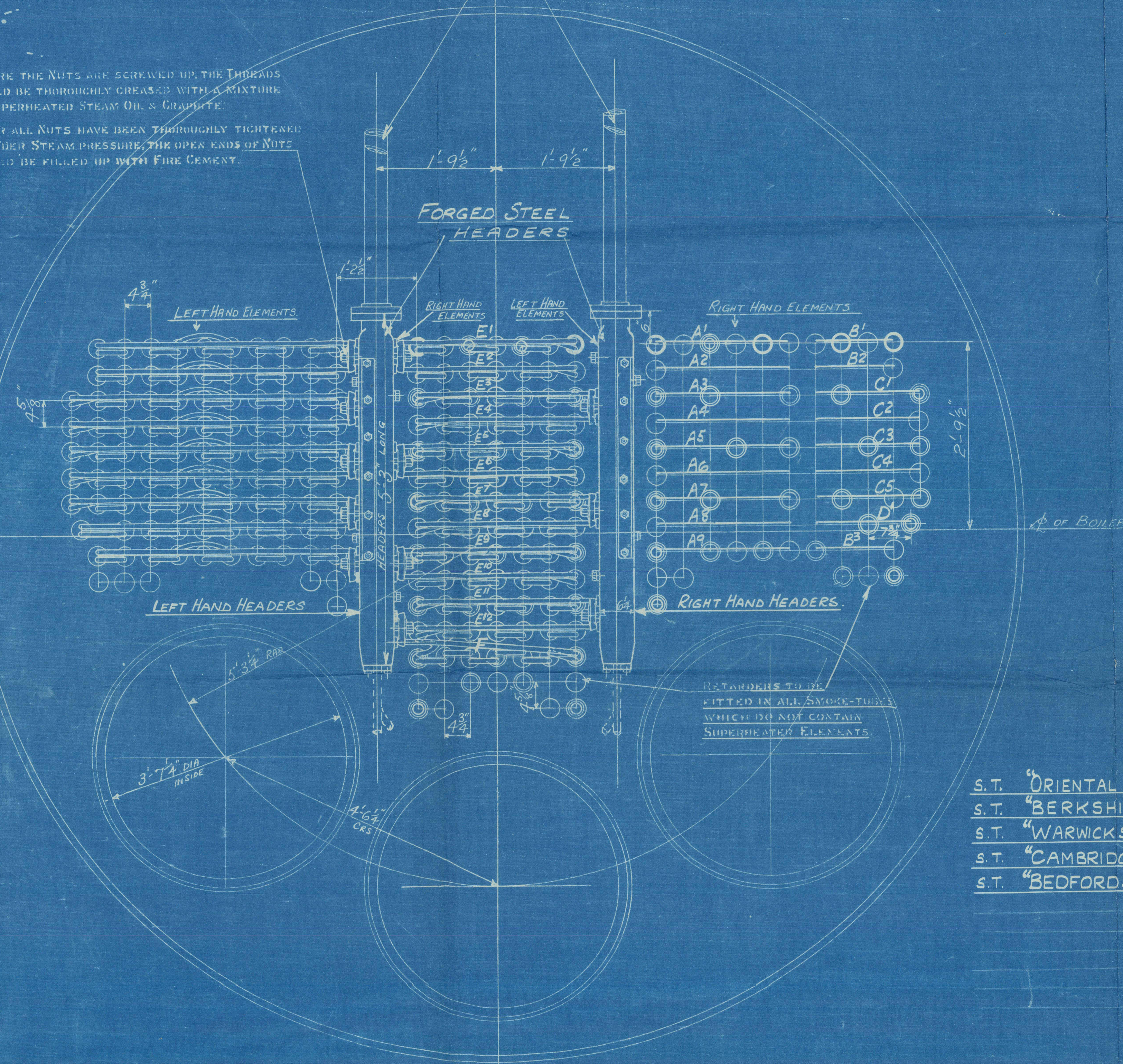


REVISION	REMARKS
A. 1/10/33	DRY VALVES REPLACED BY KLINCK COCKS & SHOT DOWN VALVE ADDED FOR ENG. N° 450, 451 & 452

BEFORE THE NUTS ARE SCREWED UP, THE THREADS SHOULD BE THOROUGHLY GREASED WITH A MIXTURE OF SUPERHEATED STEAM OIL & GRAPHITE.

AFTER ALL NUTS HAVE BEEN THOROUGHLY TIGHTENED UP UNDER STEAM PRESSURE, THE OPEN ENDS OF NUTS SHOULD BE FILLED UP WITH FIRE CEMENT.

3/4" INT. DIA. STEAM PIPES
NOT SUPPLIED BY THE SUPERHEATER CO. LTD.

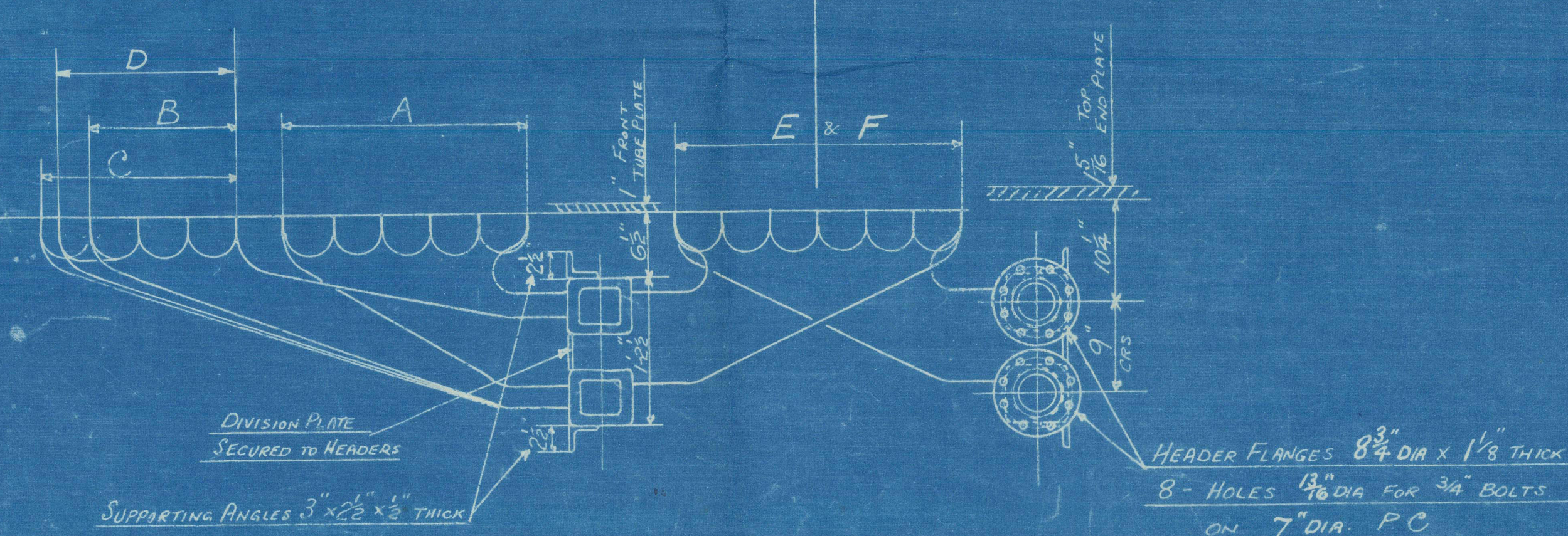
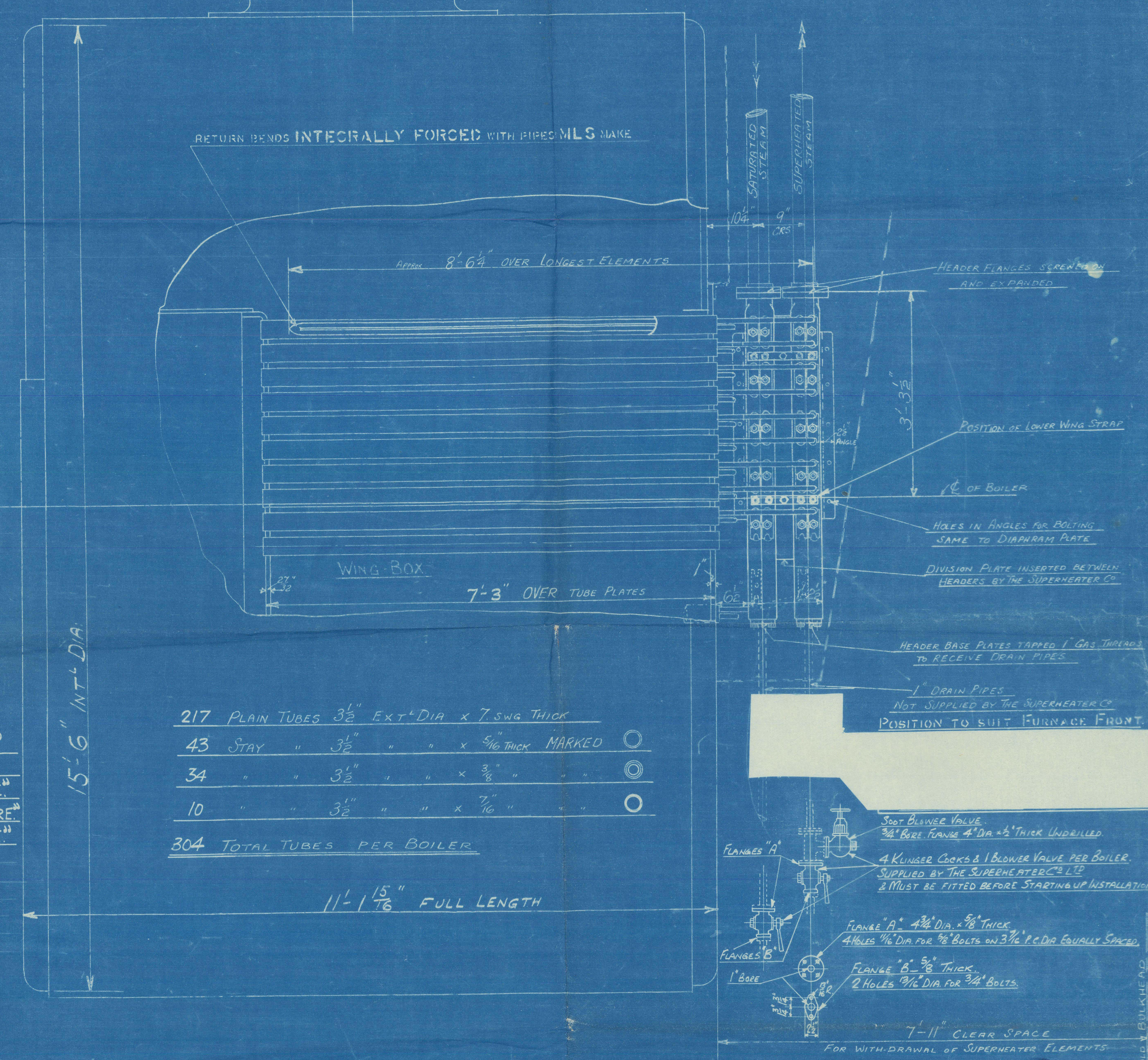


- S.T. "ORIENTAL STAR"
- S.T. "BERKSHIRE"
- S.T. "WARWICKSHIRE"
- S.T. "CAMBRIDGE SHIRE"
- S.T. "BEDFORDSHIRE"

- 217 PLAIN TUBES 3 1/2" EXT. DIA. x 7 SWG THICK
- 43 STAY " 3 1/2" " " x 5/16" THICK MARKED
- 34 " " 3 1/2" " " x 3/8" " "
- 10 " " 3 1/2" " " x 7/16" " "
- 304 TOTAL TUBES PER BOILER

11'-1 15/16" FULL LENGTH

15'-6" INT. DIA.



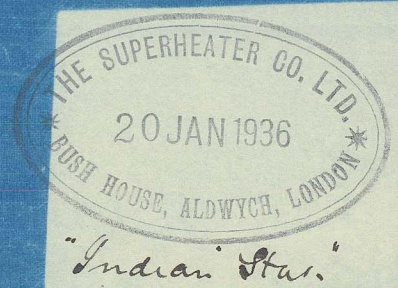
ENG. N°	SURVEY	ORDER N°
438	LLOYDS	8297M.
450	BRITISH CORPORATION	8784M.
451	"	"
452	"	8847M.
453	"	8848M.
458	"	8927M.
459	"	8928M.
465	"	8983M.
466	"	"
467	"	"
472	"	8997M.
473	LLOYDS	9010M.

NUMBER OF BOILERS ONE PER SHIP (NATURAL DRAUGHT - COAL FIRED)
WORKING PRESSURE = 225 LBS. PER SQ. IN.
GRATE AREA =
HEATING SURFACE = 2500 sq. ft.

TO PASS (SEE SCHEDULE) SURVEY

TEST PRESSURE 675 LBS. PER SQ. IN.

YARD N° 999
"Indian Star"



THE SUPERHEATER CO. LTD. BUSH HOUSE LONDON W.C.2.		
TITLE ARRANGEMENT OF SUPERHEATER		
S TYPE		
REF. CKD.	DRAWING N°S	
8297M.	MN 9460A	
SMITH'S DOCK COMPANY LIMITED		
ENG. N° 438	ENG. N° 458	ENG. N° 473
" 450	" 459	
" 451	" 465	
" 452	" 466	
" 453	" 467	
" 472	" 473	

SCALE
1" = ONE FOOT
JUN 24 1936

(8)

Arrangement of Superheaters

Smith's Docks Co's
Yard N^o 999.
"Indian Star"

Arrangement of Superheaters.

RETAIN



© 2021

W1634-0196

Lloyd's Register
Foundation