

LLOYDS NUMERALS  
TRANSVERSE N° (B+D) = 875  
LONGITUDINAL N° L+(B+D) = 35955  
PROPORTION 5" = 12' 1/2"  
EQUIPMENT N° = 37826

POOP SIDE PLATING 38 STRINGER BAR 3 1/2" x 3/8"  
BRIDGE 1/4" 3 1/2" x 1/2"  
FORECASTLE SIDE PLATING 1/4" 3 1/2" x 3/8"

POOP DECK STRINGER 30" DECK 30"  
BRIDGE 1/4" DECK 30" SHEATHED  
FORECASTLE 36" 36" DECK 25" SHEATHED

— STARBOARD SIDE —

BRIDGE DECK LONGITUDINALS 6 1/2" x 3/8"

# S.S. "BRITISH LORD."

## MIDSHIP SECTION

PRINCIPAL DIMENSIONS:— 141' 6" L.B.P. • 54' 6" B.M. • 33' 0" D.M.

ISHERWOOD SYSTEM (PATENT)

SCALE 1/2" = 1 FOOT.

YARD N° 547.

— LLOYDS EQUIPMENT NUMERAL —

L (B+D) = 86006  
POOP 113' 15" x 8' 1" = 1680  
BRIDGE 32' 0" x 8' 1" = 156  
FLUE 53' 0" x 8' 1" = 318  
SALON 30' 5" x 8' 1" = 201  
CASING 10' 25" x 8' 1" = 141  
EQUIPMENT N° = 37826

— STARBOARD SIDE —

ELEVATION OF WEB 10' 2" FROM CENTRE.

DECK LONG 6 1/2" x 3/8" B.A.

1/8" RIVETS SPACED 6 DIAS. APART.

N°1 BRIDGE 6 1/2" x 3/8" B.A.

N°2 BRIDGE 6 1/2" x 3/8" B.A.

INCLUDES OWNERS EXTRAS.

N°1 8' 3 1/2" x 1/2" B.A.

1/8" RIVETS SPACED 6 DIAS. APART.

N°2 8' 3 1/2" x 1/2" B.A.

1/8" RIVETS SPACED 6 DIAS. APART.

N°3 8' 3 1/2" x 1/2" B.A.

1/8" RIVETS SPACED 6 DIAS. APART.

N°4 8' 3 1/2" x 1/2" B.A.

1/8" RIVETS SPACED 1/2 DIAS. APART. FOR 8 RIVETS EACH SIDE OF TRANSVERSE AND BULKHEAD, 6 DIAS. ELSEWHERE.

N°5 8' 3 1/2" x 1/2" B.A.

1/8" RIVETS SPACED 1/2 DIAS. APART. FOR 8 RIVETS EACH SIDE OF TRANSVERSE AND BULKHEAD, 6 DIAS. ELSEWHERE.

N°6 9' 3 1/2" x 1/2" B.A.

1/8" RIVETS SPACED 1/2 DIAS. APART. FOR 8 RIVETS EACH SIDE OF TRANSVERSE AND BULKHEAD, 6 DIAS. ELSEWHERE.

N°7 9' 3 1/2" x 1/2" B.A.

1/8" RIVETS SPACED 1/2 DIAS. APART. FOR 8 RIVETS EACH SIDE OF TRANSVERSE AND BULKHEAD, 6 DIAS. ELSEWHERE.

N°8 10' 3 1/2" x 1/2" B.A.

1/8" RIVETS SPACED 1/2 DIAS. APART. FOR 8 RIVETS EACH SIDE OF TRANSVERSE AND BULKHEAD, 6 DIAS. ELSEWHERE.

N°9 10' 3 1/2" x 1/2" B.A.

1/8" RIVETS SPACED 1/2 DIAS. APART. FOR 8 RIVETS EACH SIDE OF TRANSVERSE AND BULKHEAD, 6 DIAS. ELSEWHERE.

N°10 10' 3 1/2" x 1/2" B.A.

1/8" RIVETS SPACED 1/2 DIAS. APART. FOR 8 RIVETS EACH SIDE OF TRANSVERSE AND BULKHEAD, 6 DIAS. ELSEWHERE.

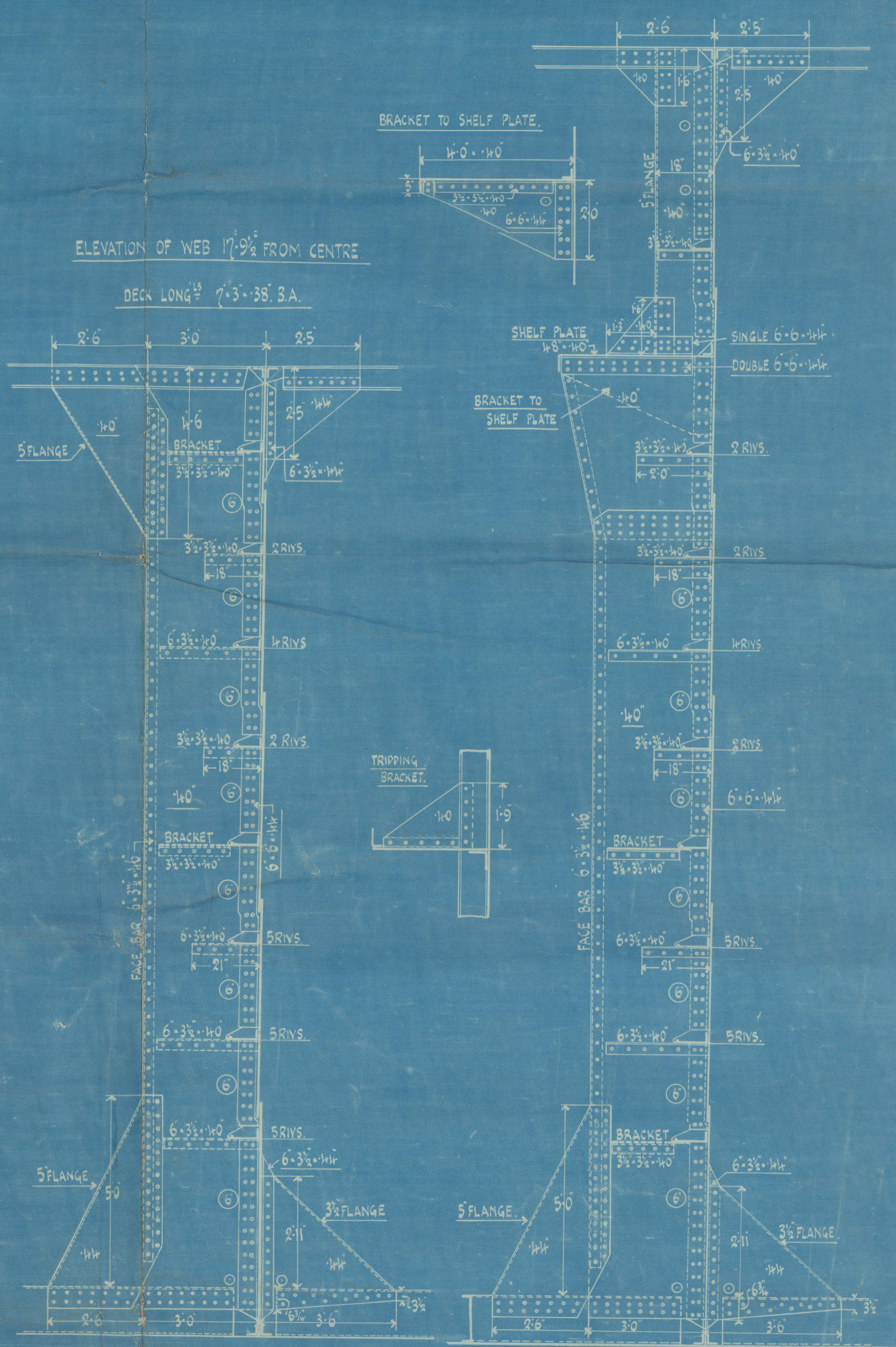
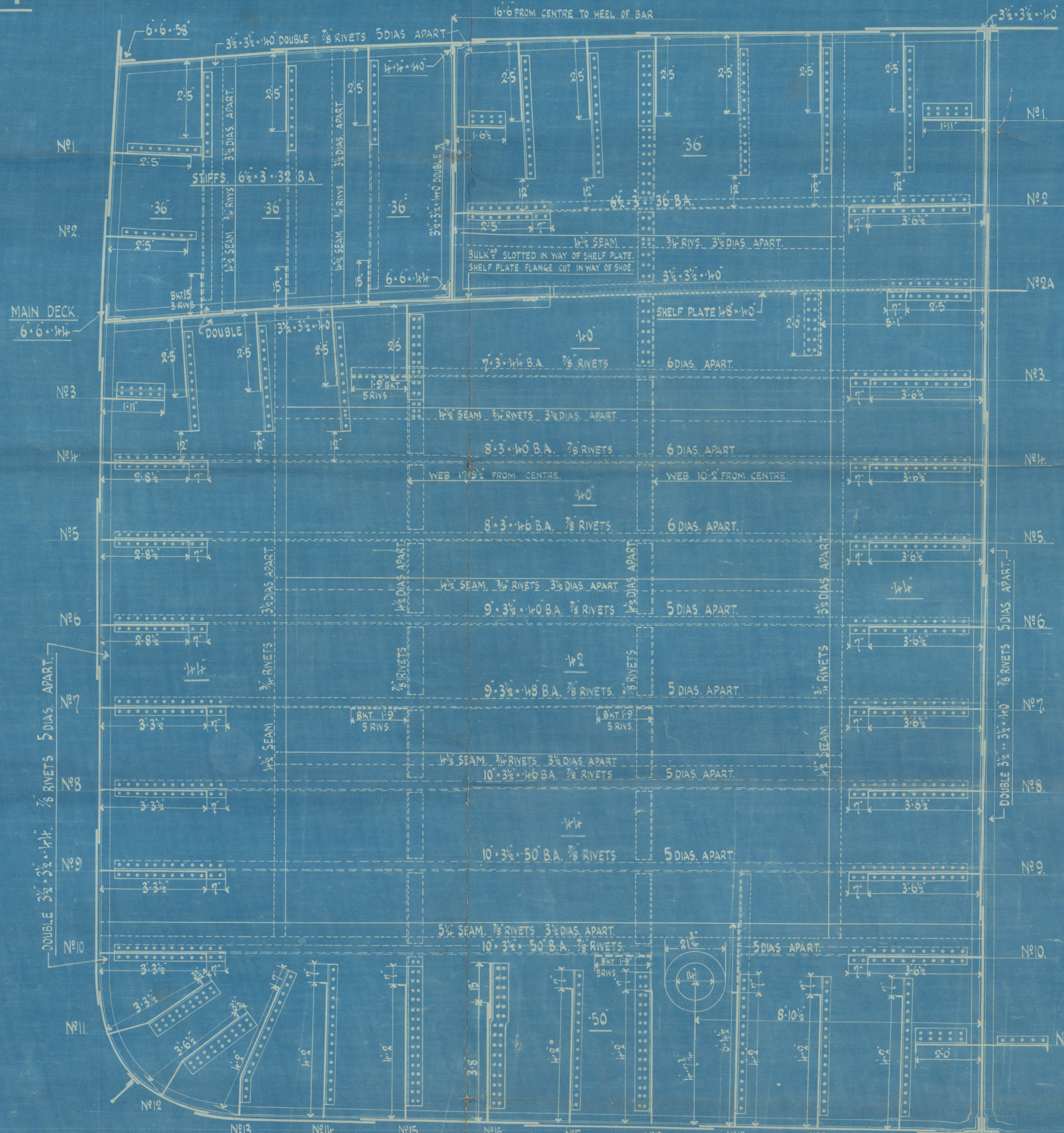
N°11 12' 1/2" x 3 1/2" x 3/8" 60 CHANNEL.

LONG 3" ON PLAT OF FLOOR IN N°1 OIL TANK.  
TO HAVE 1/8" RIVETS SPACED 1/2 DIAS. APART.  
THROUGHOUT.

LONGITUDINALS N° 15 1/2" x 1/2" x 0" CHANNELS.  
BASE LINE REMAINDER SQUARE TO SHELL.

BOTTOM LONGITUDINALS 15' 1/2" x 1/2" x 0" CHANNELS.  
BOTTOM PLATING 1/2" TO 1/4" MIDSHIP THICKNESS ON 3 STRANES EACH  
SIDE OF KEEL MAINTAINED TO COLLISION BULKHEAD. BUTTS QUAD.  
OVERLAPS FOR 1/2 LENGTH TO TREBLE AT ENDS.  
3 STRANES EACH SIDE OF KEEL INCREASED 1/4" IN WAY OF TRANSVERSE  
FRAMING IN OIL FUEL TANK. FORWARD, N° 12 TO 36 = 1/4".

KEEL 1/2" x 3/8" TO 7/8" AT ENDS  
QUINTUPLE OVERLAPS FOR 1/2 LT.  
TO TREBLE AT ENDS.



SUNDERLAND

J. L. THOMPSON & SONS L<sup>TD</sup>

N<sup>o</sup> 547

S.S. "BRITISH LORD"

"MIDSHIP SECTION"

SUNDERLAND, NO. 28450

RETAIN



© 2021

Lloyd's Register  
Foundation

W1630-0062