

LOAN REGISTER ON BOARD
S.S. No. 843
LONDON

20.7.11
27.7.11
3.8.11
14.9.11
13.10.11
16.11.11
18.5.12

Schwaben

S.S. No. 843.

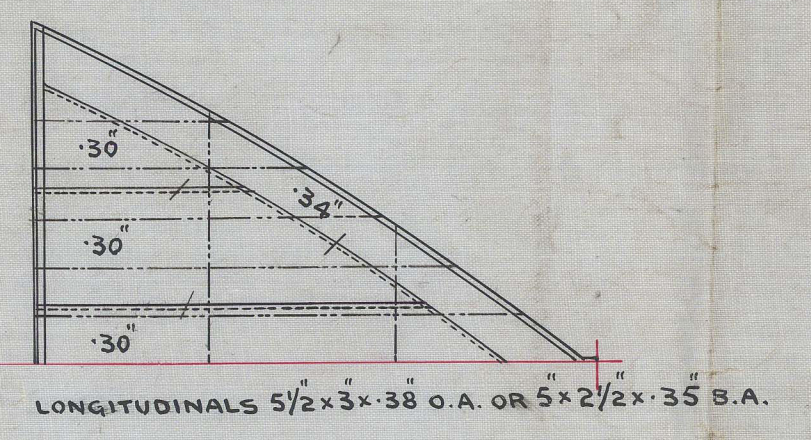
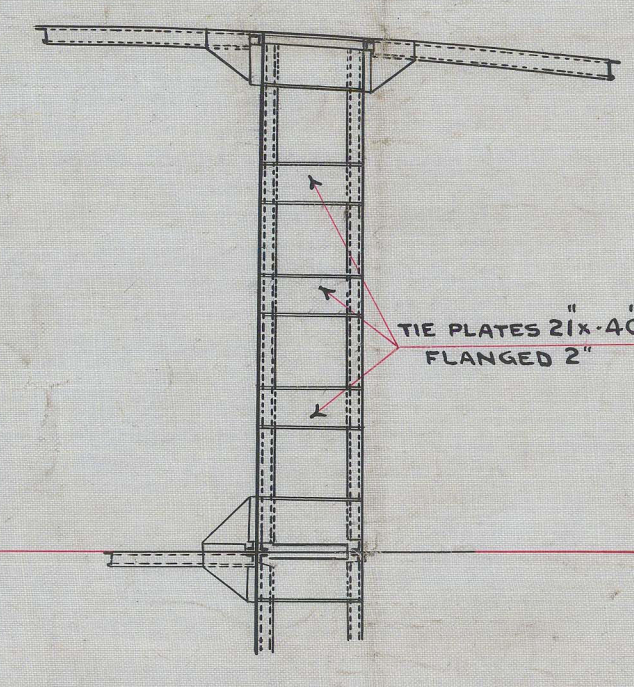
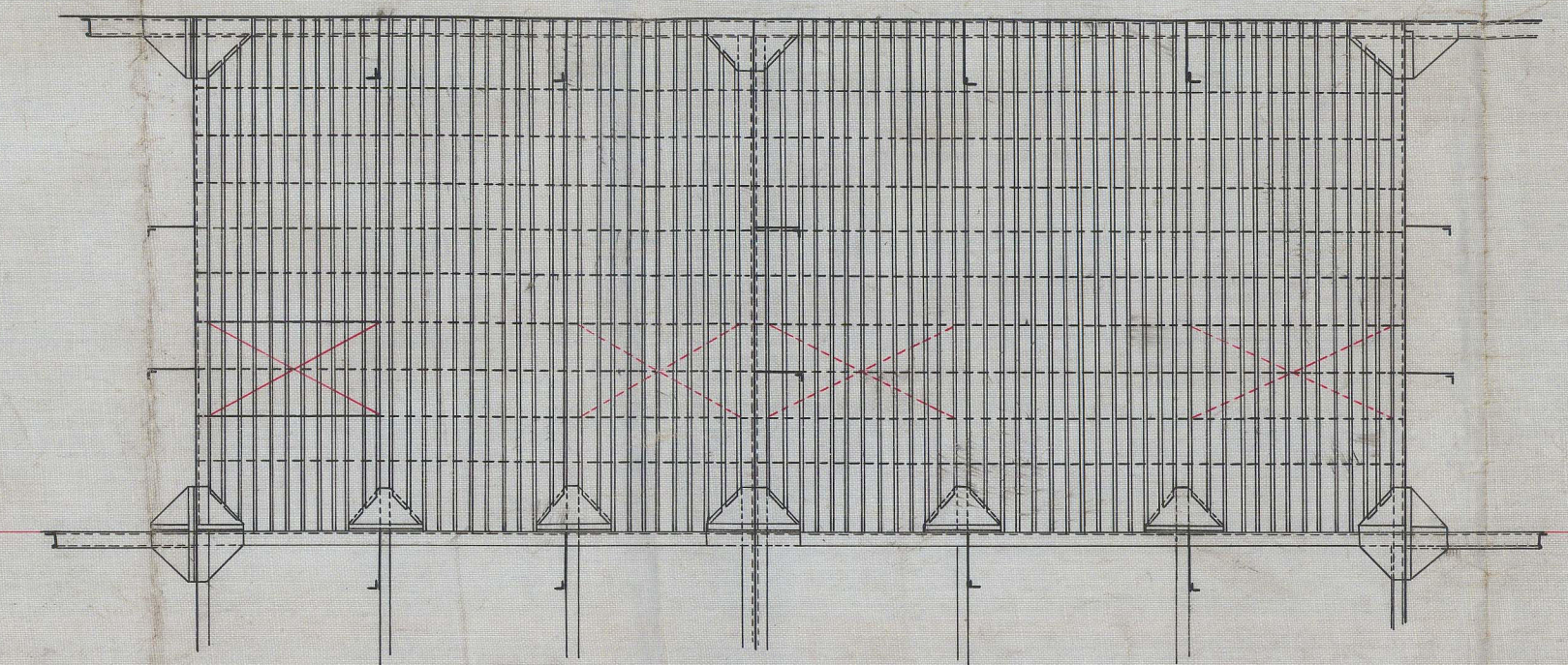
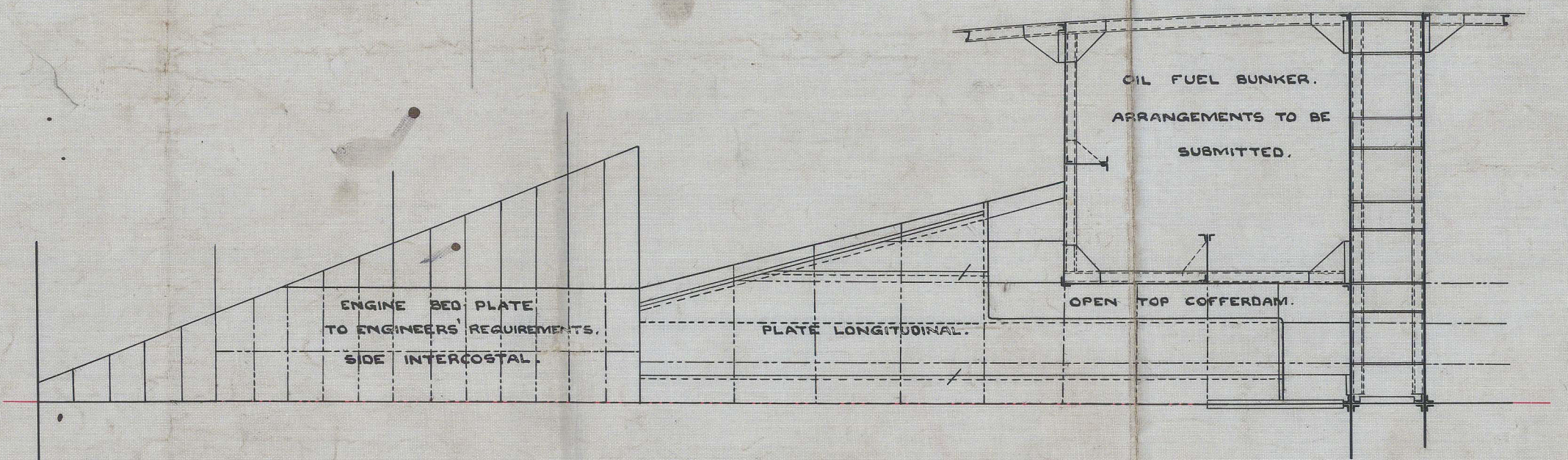
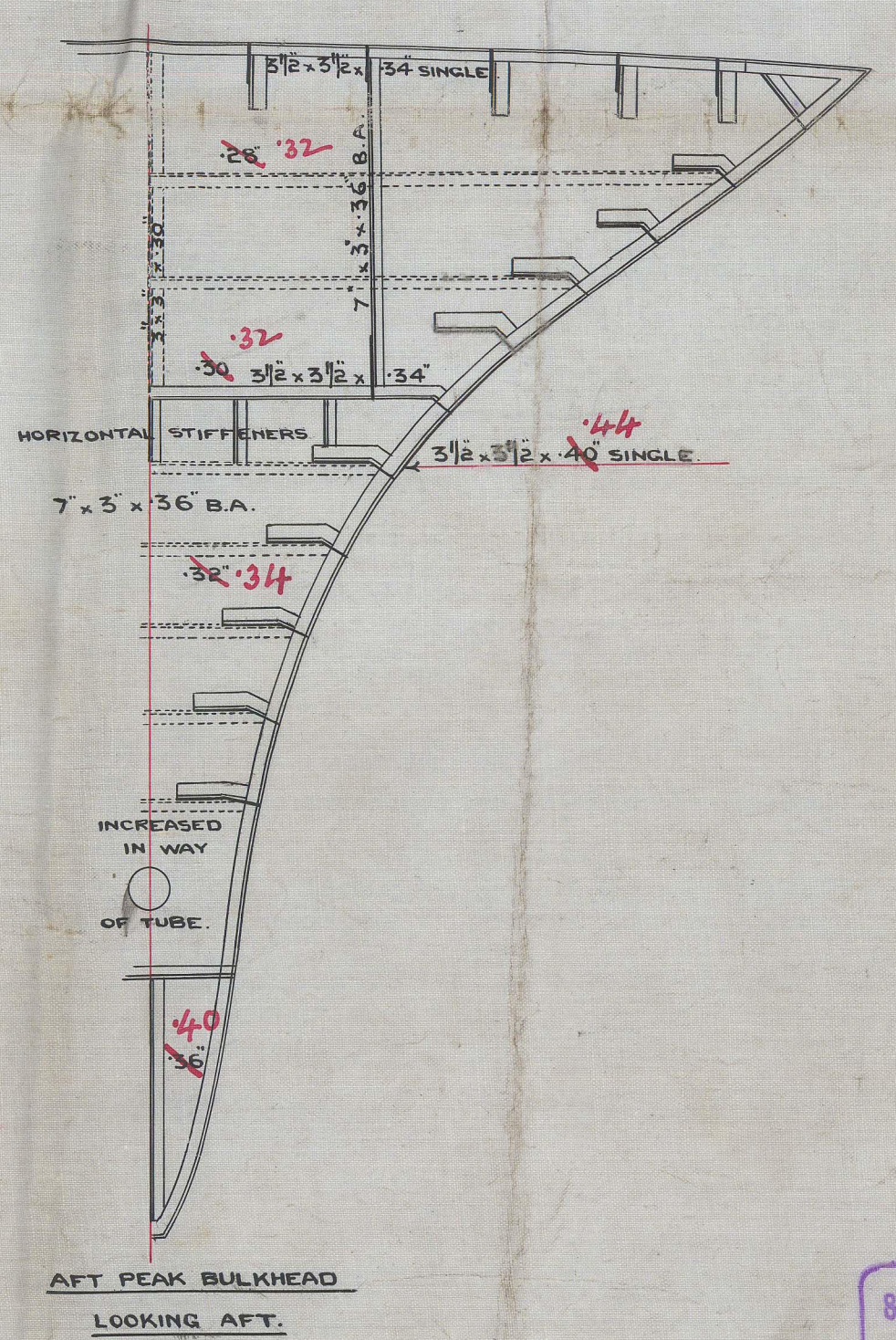
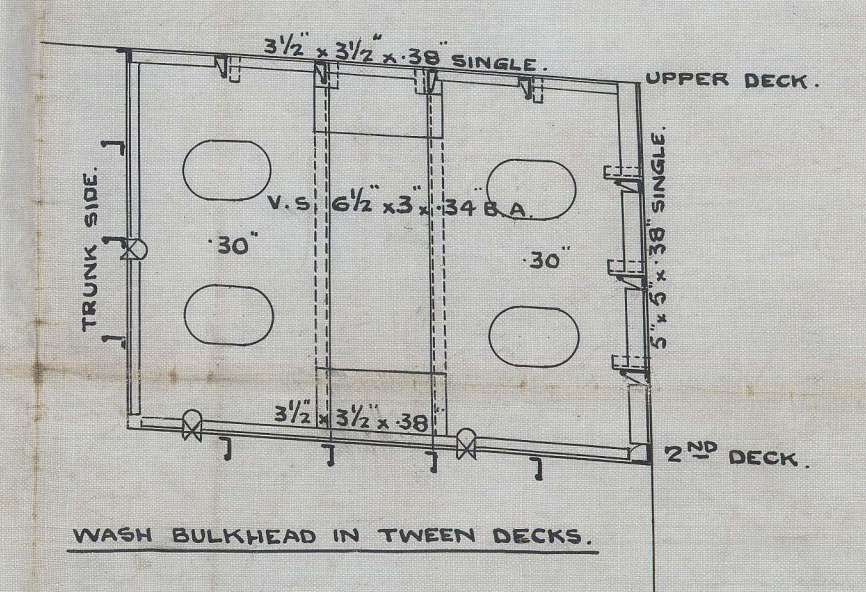
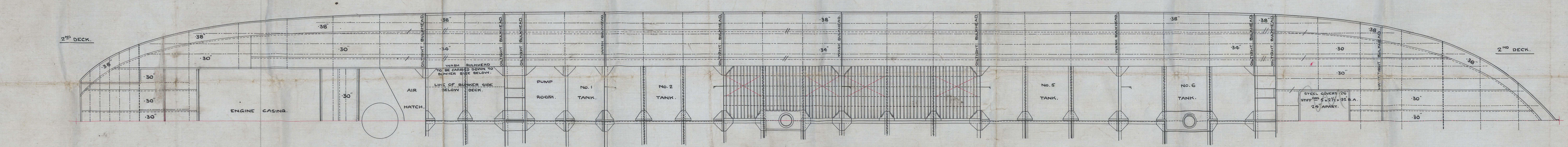
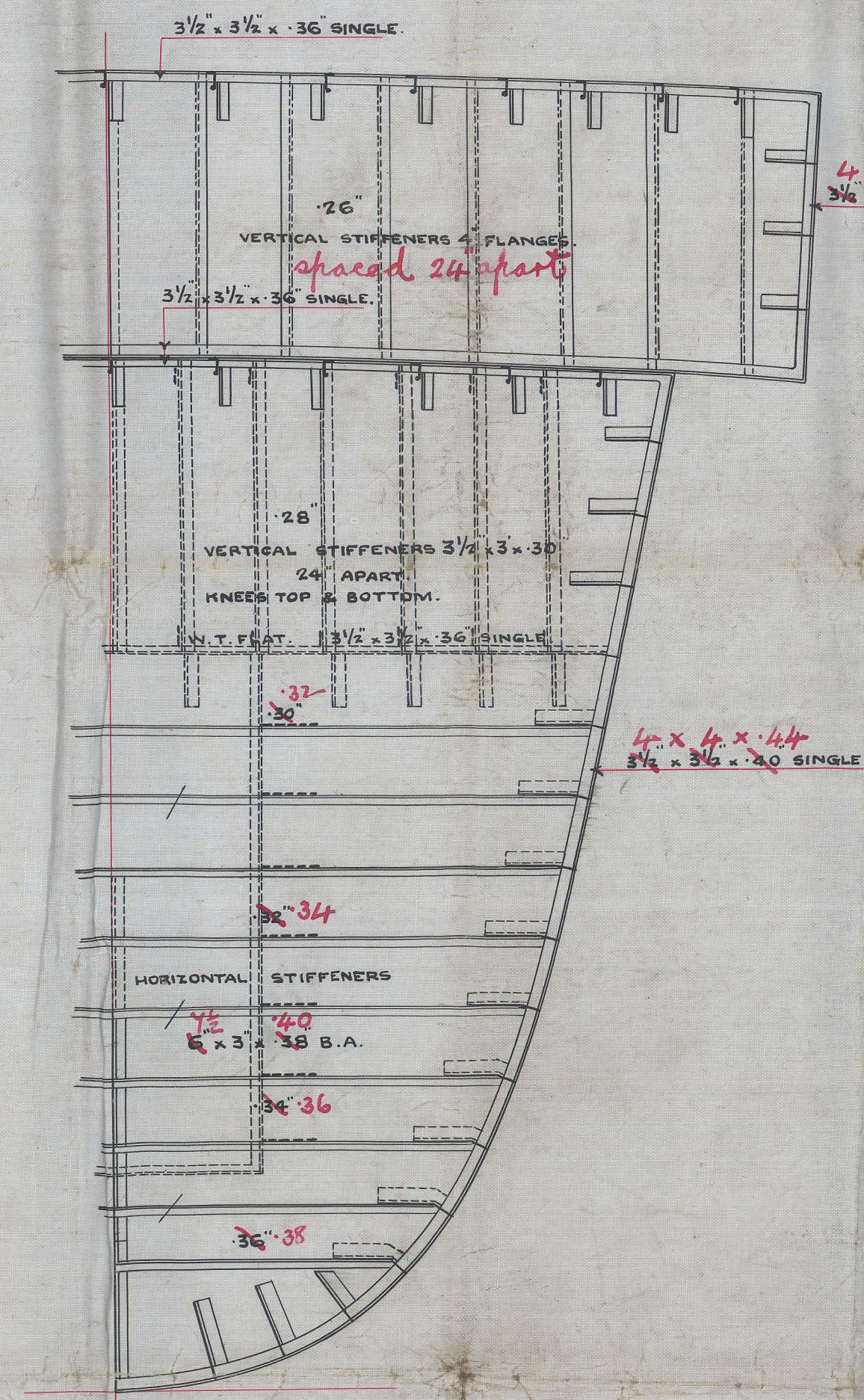
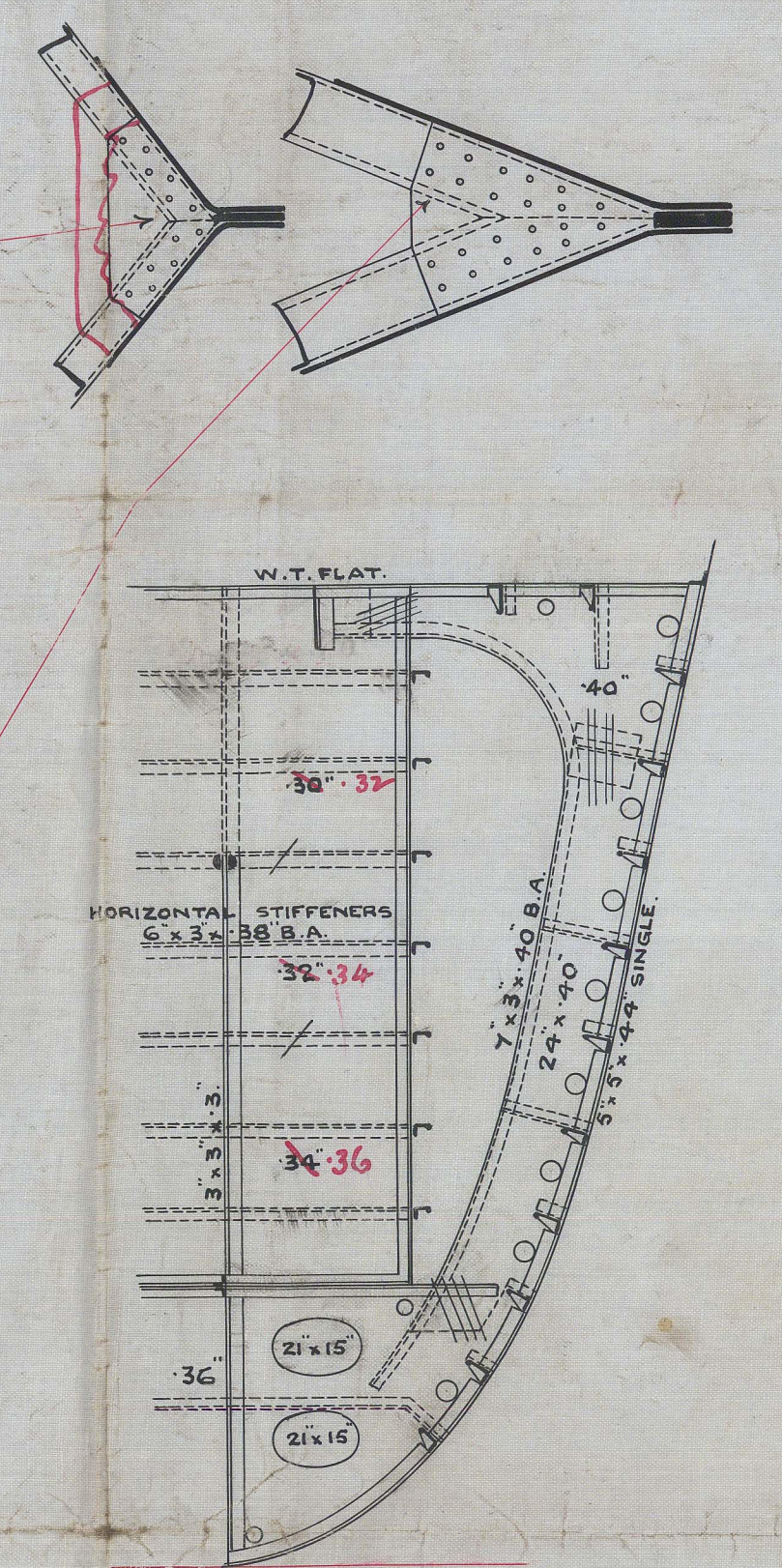
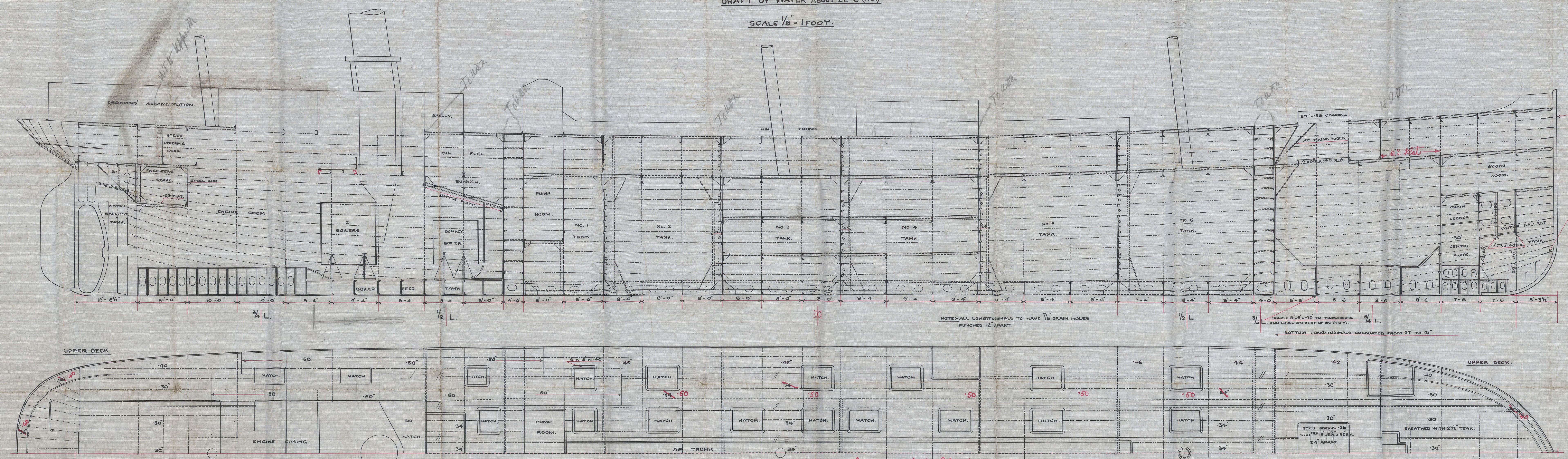
LONGITUDINAL PLAN.

MOULDED DIMENSIONS 300' x 43'-9" x 31'-0".

CLASS :- 100 A. I. TWO DECK.

DRAFT OF WATER ABOUT 22'-6" (1.9).

SCALE 1/8" = 1 FOOT.



C.B.
19.7.11.

Wm. B. Armstrong & Co. Ltd.
NEWCASTLE-UPON-TYNE
1882
DATE 13.7.11
WALKER SHIPYARD.

Wm. B. ARMSTRONG, WHITEWORTH & CO. LTD.
NEWCASTLE-UPON-TYNE
No. 1182. DATE 13.7.11
WALKER SHIPYARD.

Sir W. G. Armstrong
Whitworth & Co Ltd

SS 843

Profile plan

S.S. 'SHWEDAGON'
NEWCASTLE-ON-TYNE

REPORT No. 62442



RETAIN



© 2021

Lloyd's Register
Foundation