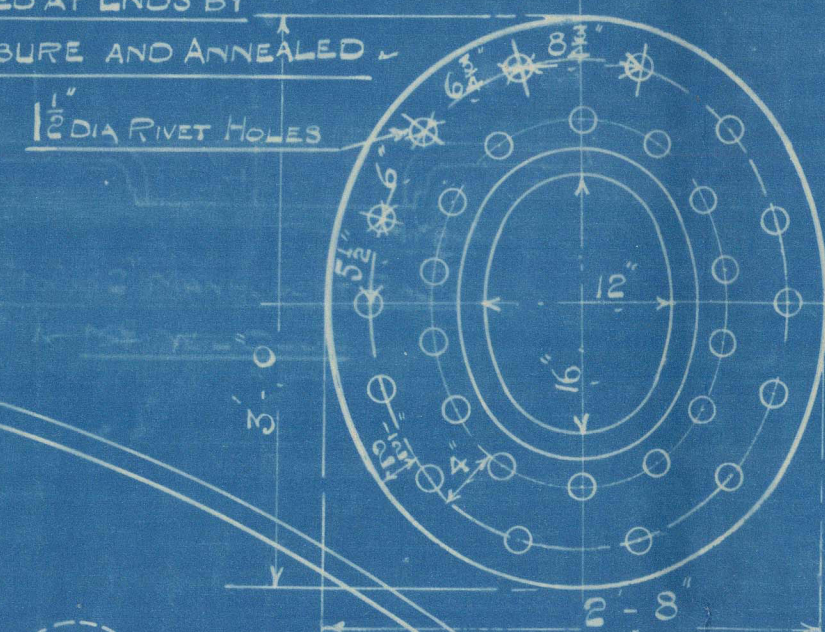


SURFACES		ONE BOILER	3 BOILERS
TUBES		2100 #.	6300 #.
FIREBOX TOP & SIDES		153 "	474 "
" BACK		82 "	246 "
" TUBEPLATE		55 "	165 "
FURNACES		161 "	483 "
TOTAL HEATING SURFACE		2556 #.	7668 #.
STEAM AREA	(5-6 BARS)	65.3 #.	195.9 #.
OIL FUEL		165 "	347.7 #.
WATER		169 "	480 "
STEAM SPACE		514 #.	1542 #.
GRATE AREA: HEATING SURFACE		1:40-4	
" : TUBE		1:53-2	
" : AREA		5:43-1	
" : WATER		1:2-52	
" : STEAM SPACE		1:8-1	
% WEIGHT ABOVE FIREBOX		32.2	
BOILER OF WATER		264 TONS	792 "

ALL RIVET HOLES DRILLED IN PLACE. -
MAIN STAYS SWELLED AT ENDS BY
HYDRAULIC PRESSURE AND ANNEALED.



N^{OS} 547A, 550A,
N^{OS} 560A, 562A, 568A

S. S. "HEROIC" MAIN BOILER

2. REQUIRED.
(3. REQUIRED
PER SNIP)

WORKING PRESSURE 200 LBS PER SQ INCH
TO PASS LLOYD'S SURVEY & BOARD OF TRADE

ALL FIREBOX STAYS SCREWED THRO' BOTH PLATES & NUTS FITTED AT EACH END.
EXCEPT STAYS FROM WING FIREBOX TO SHELL WHICH PROJECT $\frac{3}{8}$ & ARE CALLED $\frac{3}{4}$ "
ALL $1\frac{1}{2}$ " NUTS $1\frac{1}{2}$ " DEEP EXCEPT ON GIRDLE TOPS WHERE THE OUTSIDE NUTS ARE $1\frac{1}{4}$ " DEEP

POSITION	MARK	DIA	EFF AREA	TOSTER
BACK TOP & SIDES	○	1 3/4"	2.068 ^{sq} "	~ 10
" WIDE SPACE	⊗	2"	2.75 ^{sq} "	~ 10
TOP PANEL	○	2 1/4"	3.438 ^{sq} "	~ 10

N ⁶⁶	DATA, D66A	APPROVED BY	OWNERS	11.710
			FLYD	15.710
"	D66A, D66A, D66A	"	OWNERS	15.811
"		"	FLYD	20.811

T. S. S. HEROIC.

SINGLE ENDED BOILER

2. OFF.

HARLAND & WOLFF.

RETAIN



W1627-0105

© 2021

Lloyd's Register
Foundation